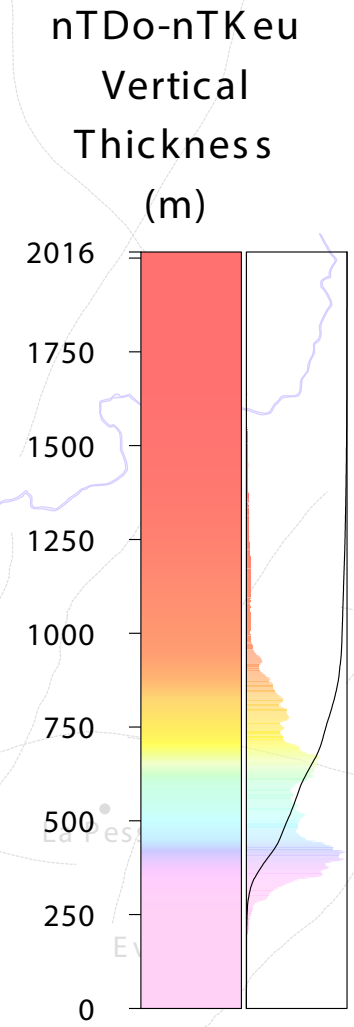
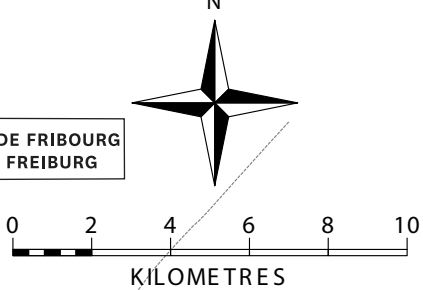


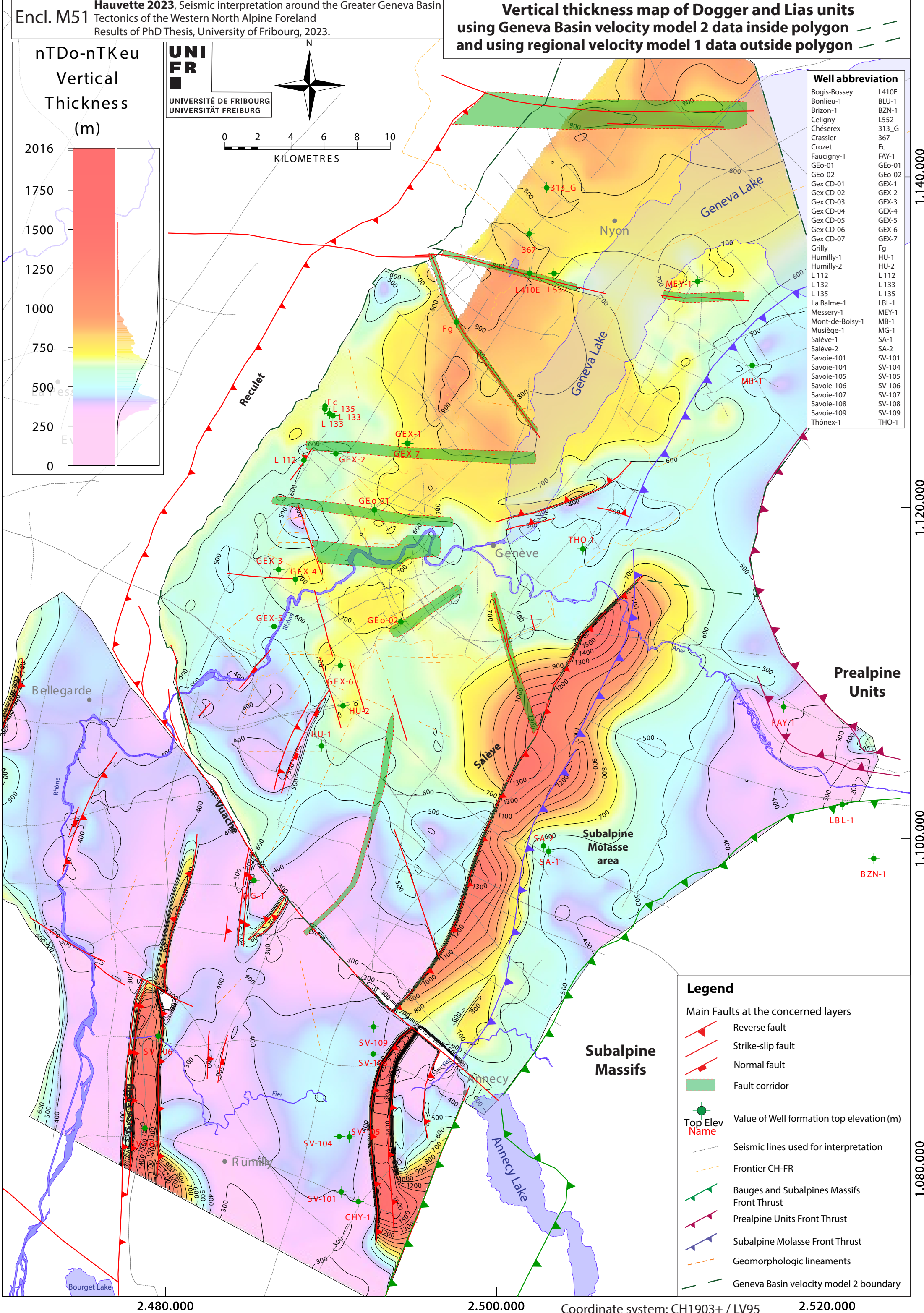
Vertical thickness map of Dogger and Lias units
using Geneva Basin velocity model 2 data inside polygon
and using regional velocity model 1 data outside polygon



UNI
FR
UNIVERSITÉ DE FRIBOURG
UNIVERSITÄT FREIBURG



Well abbreviation	
Bogis-Bossey	L410E
Bonlieu-1	BLU-1
Brizon-1	BZN-1
Celigny	L552
Chésereux	313_G
Crassier	367
Crozet	Fc
Faucigny-1	FAY-1
GEO-01	GEO-01
GEO-02	GEO-02
Gex CD-01	GEX-1
Gex CD-02	GEX-2
Gex CD-03	GEX-3
Gex CD-04	GEX-4
Gex CD-05	GEX-5
Gex CD-06	GEX-6
Gex CD-07	GEX-7
Grilly	Fg
Humilly-1	HU-1
Humilly-2	HU-2
L 112	L 112
L 132	L 133
L 135	L 135
La Balme-1	LBL-1
Messery-1	MEY-1
Mont-de-Boisy-1	MB-1
Musiège-1	MG-1
Salève-1	SA-1
Salève-2	SA-2
Savoie-101	SV-101
Savoie-104	SV-104
Savoie-105	SV-105
Savoie-106	SV-106
Savoie-107	SV-107
Savoie-108	SV-108
Savoie-109	SV-109
Thônex-1	THO-1



- Legend
- Main Faults at the concerned layers
- Reverse fault
 - Strike-slip fault
 - Normal fault
 - Fault corridor
- Top Elev
Name
- Value of Well formation top elevation (m)
- Seismic lines used for interpretation
- Frontier CH-FR
 - Bauges and Subalpines Massifs Front Thrust
 - Prealpine Units Front Thrust
 - Subalpine Molasse Front Thrust
 - Geomorphologic lineaments
 - Geneva Basin velocity model 2 boundary