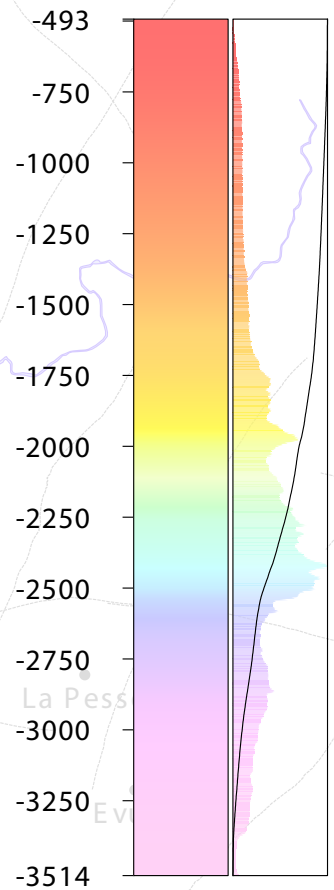
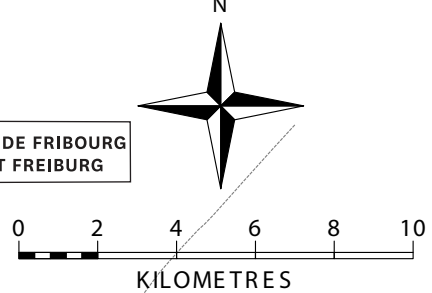


nTKeu Elev  
(m a.s.l.)

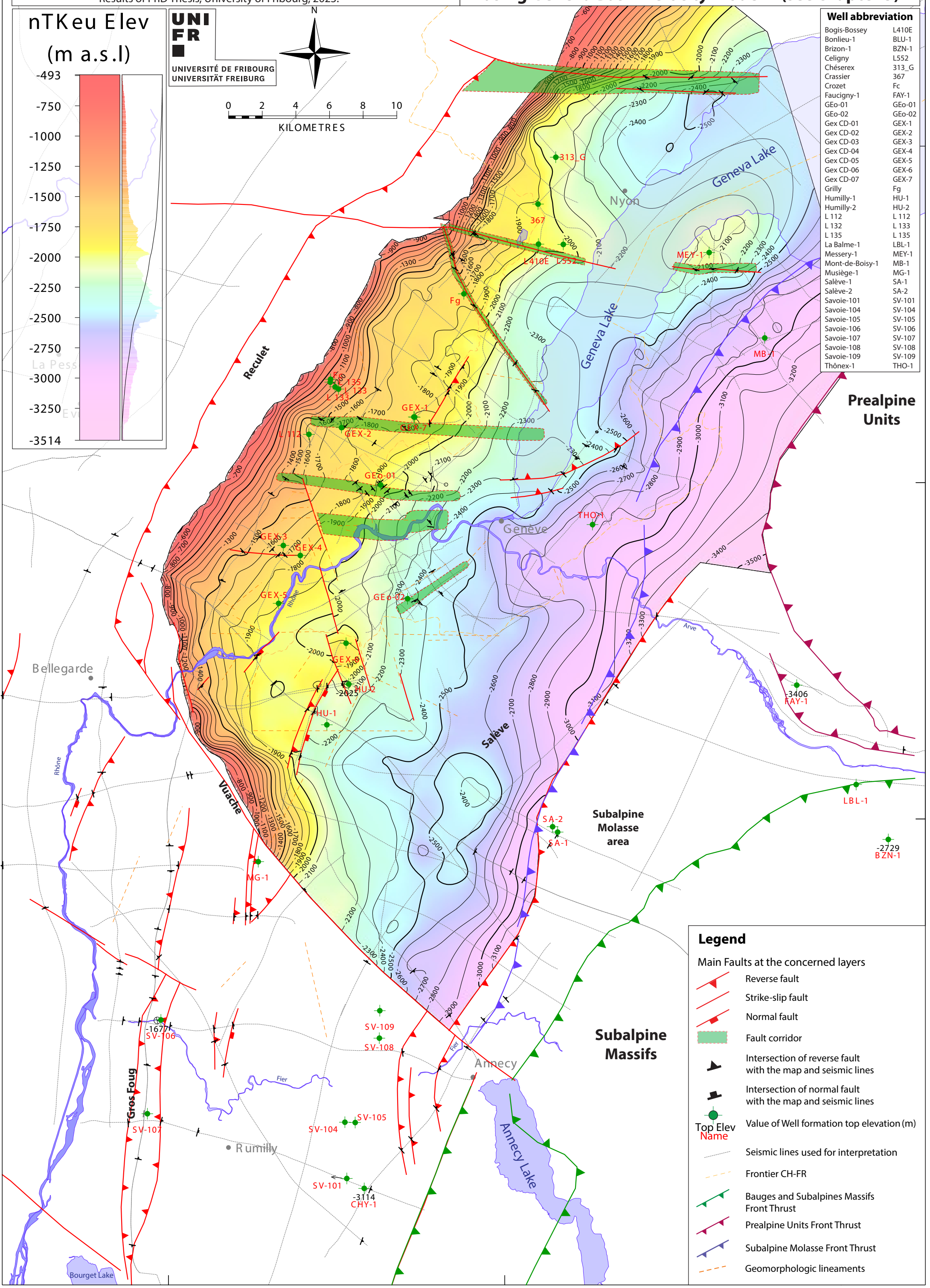


UNI  
FR  
UNIVERSITÉ DE FRIBOURG  
UNIVERSITÄT FREIBURG



**Well abbreviation**

Bogis-Bossey	L410E
Bonlieu-1	BLU-1
Brizon-1	BZN-1
Celigny	L552
Chésereux	313_G
Crassier	367
Crozat	Fc
Faucigny-1	FAY-1
GEO-01	GEO-01
GEO-02	GEO-02
Gex CD-01	GEX-1
Gex CD-02	GEX-2
Gex CD-03	GEX-3
Gex CD-04	GEX-4
Gex CD-05	GEX-5
Gex CD-06	GEX-6
Gex CD-07	GEX-7
Gilly	Fg
Humilly-1	HU-1
Humilly-2	HU-2
L 112	L 112
L 132	L 133
L 135	L 135
La Balme-1	LBL-1
Messery-1	MEY-1
Mont-de-Boisy-1	MB-1
Musiège-1	MG-1
Salève-1	SA-1
Salève-2	SA-2
Savoie-101	SV-101
Savoie-104	SV-104
Savoie-105	SV-105
Savoie-106	SV-106
Savoie-107	SV-107
Savoie-108	SV-108
Savoie-109	SV-109
Thônex-1	THO-1



**Legend**

	Main Faults at the concerned layers
	Reverse fault
	Strike-slip fault
	Normal fault
	Fault corridor
	Intersection of reverse fault with the map and seismic lines
	Intersection of normal fault with the map and seismic lines
	Top Elev
	Name
	Seismic lines used for interpretation
	Frontier CH-FR
	Bauges and Subalpines Massifs Front Thrust
	Prealpine Units Front Thrust
	Subalpine Molasse Front Thrust
	Geomorphologic lineaments