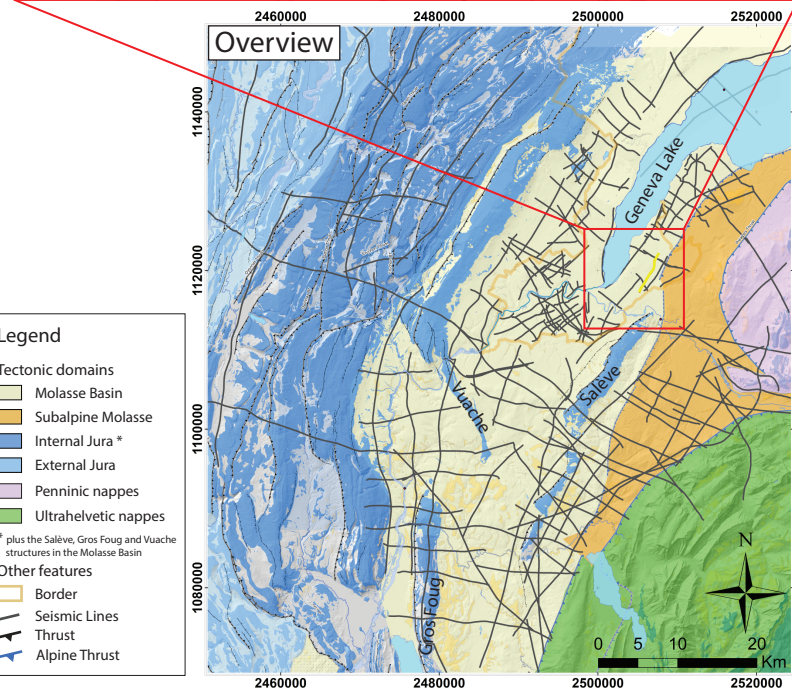
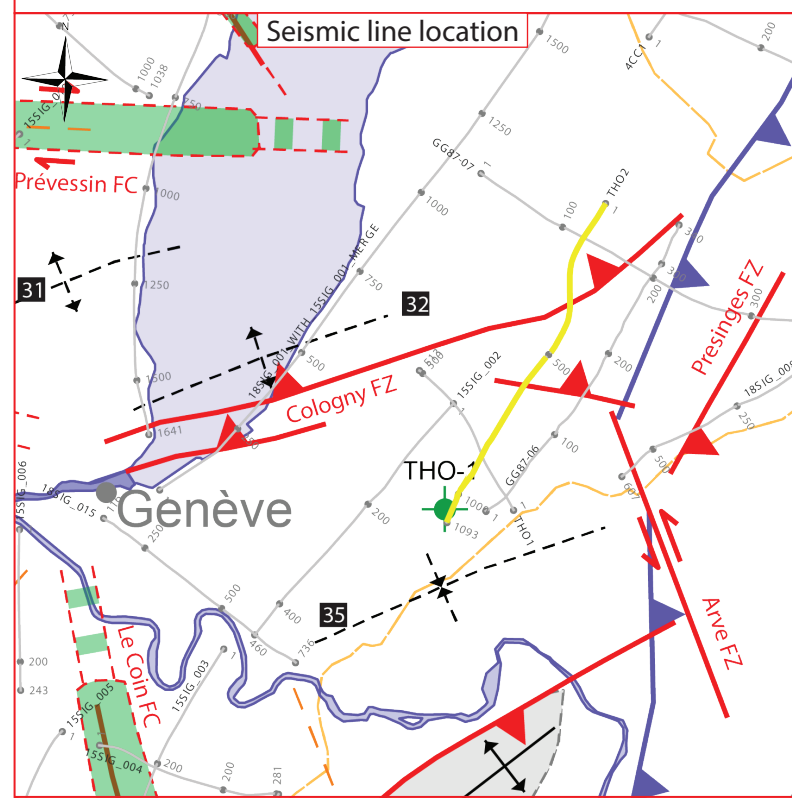
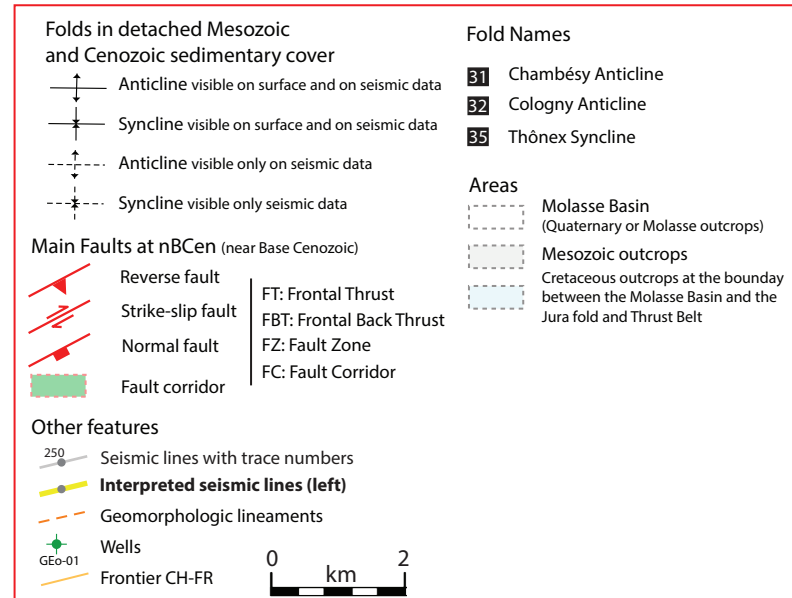
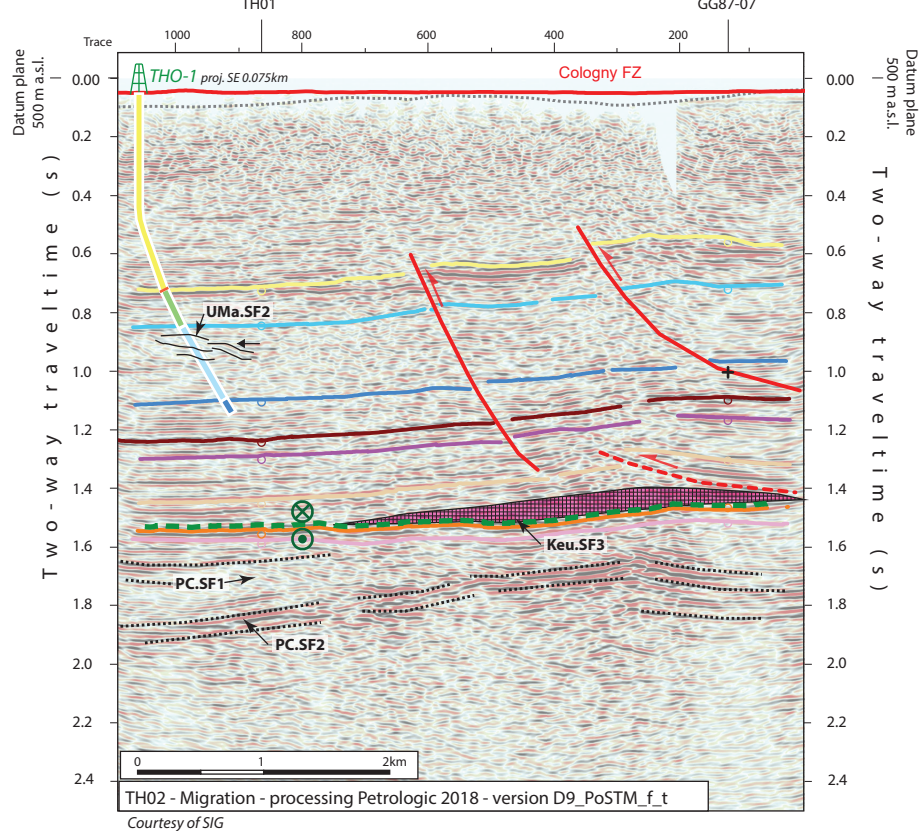
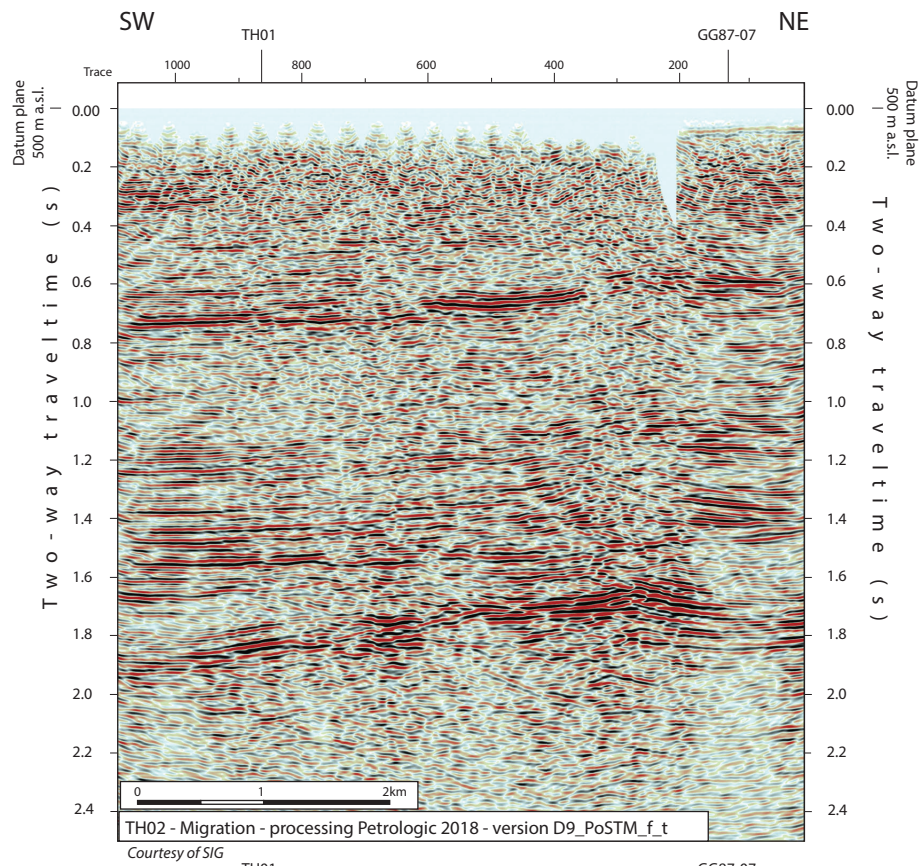


2D seismic line TH02 (CH)



Structural Interpretation

- Correlated fault stick (with intersection cross with other surveys)
- Non-correlated fault stick
- Conceptual fault stick
- Basal décollement zone
- Fault corridor boundary
- Major dip change line
- Fold axial surface

Stratigraphic Interpretation

- Displacement vector pointing towards the observer
- Displacement vector pointing away from the observer
- Horizon well defined
- Horizon poorly defined / intra Paleozoic reflections / near Base Quaternary model (GESDEC)
- Horizons TWT at line intersections
- Projected perpendicular to the seismic line

Well abbreviation (Map and section)

- Thônex-1 TH01
- Well stratigraphy: Cenozoic & Quaternary, Lower Cenozoic (Eocene?), Cretaceous, Upper Malm, Lower Malm
- Seismic facies (SF) (see chap 4.2.)
- Unit.SFx (seismic facies name)
- Geometrical bedform and termination pattern

Other abbreviations

- Trace: Seismic trace
- FZ: Fault zone
- FC: Fault corridor
- TWT: Two way traveltime
- proj.: Projected
- s: Seconds
- nT: near Top
- nB: near Base
- Q: Quaternary
- Cen: Cenozoic
- UMa: Upper Malm
- LMa: Lower Malm
- Do: Dogger
- Li: Lias
- Keu: Keuper
- Mus: Muschelkalk
- Mes: Mesozoic
- InPal: Intra Paleozoic