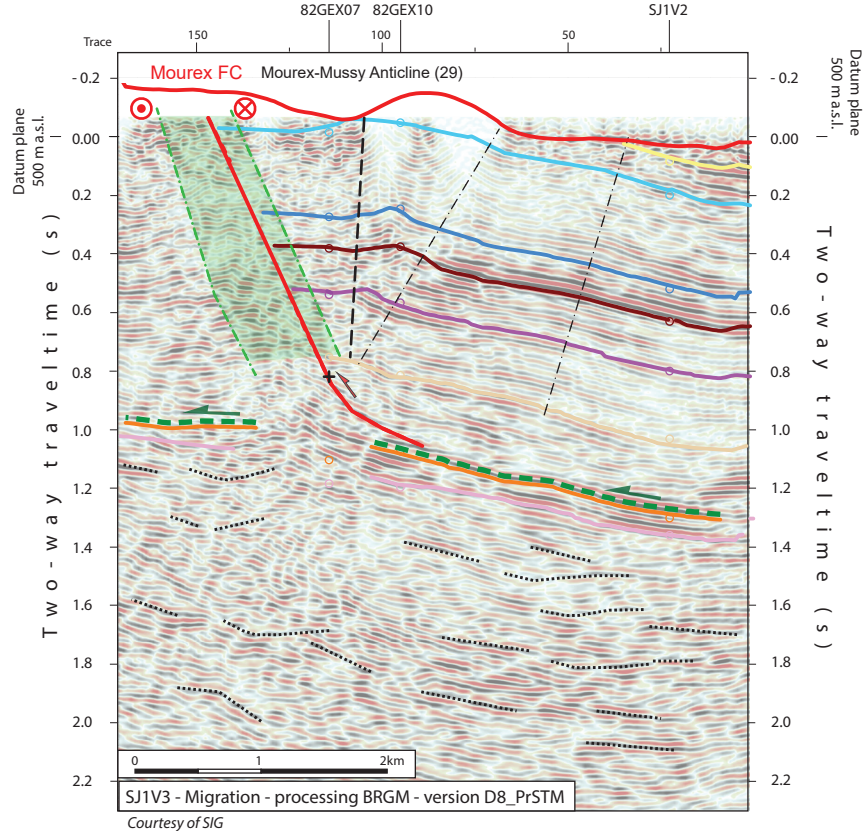
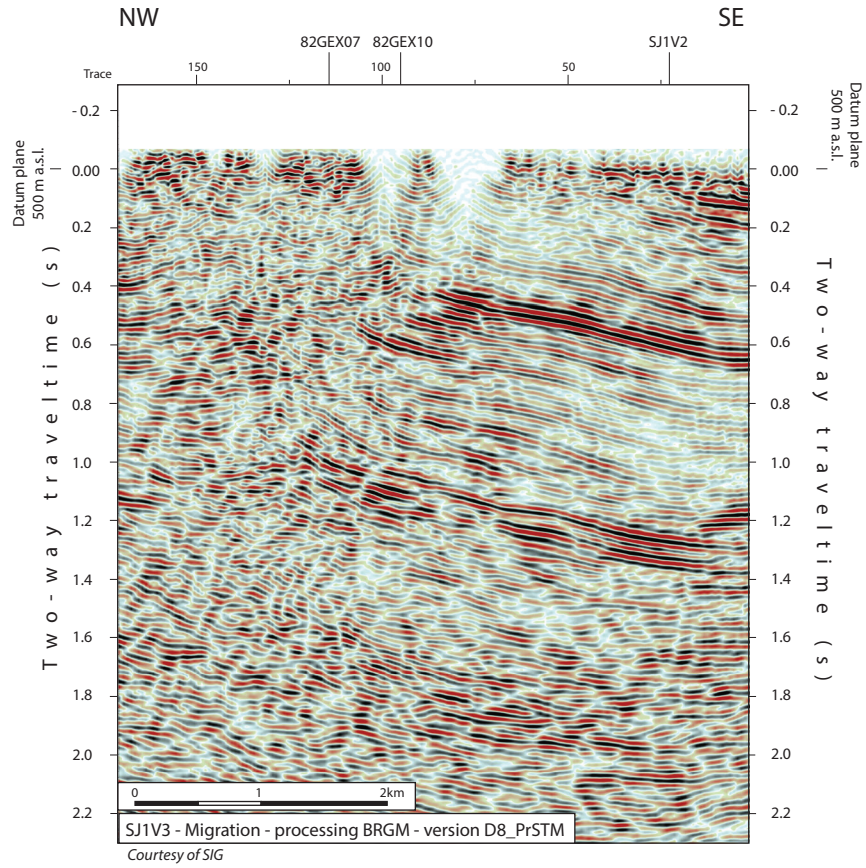


### 2D seismic line SJ1V3 (FR)



**Folds in detached Mesozoic and Cenozoic sedimentary cover**

- Anticline visible on surface and on seismic data (blue -> only in Cenozoic cover)
- Syncline visible on surface and on seismic data (blue -> only in Cenozoic cover)
- Anticline visible only on seismic data (blue -> only in Cenozoic cover)
- Syncline visible only on seismic data (blue -> only in Cenozoic cover)

**Fold Names**

- 28 Versonnex Anticline
- 29 Mourex-Mussy Anticline
- 30 Chesserex Anticline

**Areas**

- Molasse Basin (Quaternary or Molasse outcrops)
- Mesozoic outcrops
- Cretaceous outcrops at the boundary between the Molasse Basin and the Jura fold and Thrust Belt

**Main Faults at nBCen (near Base Cenozoic)**

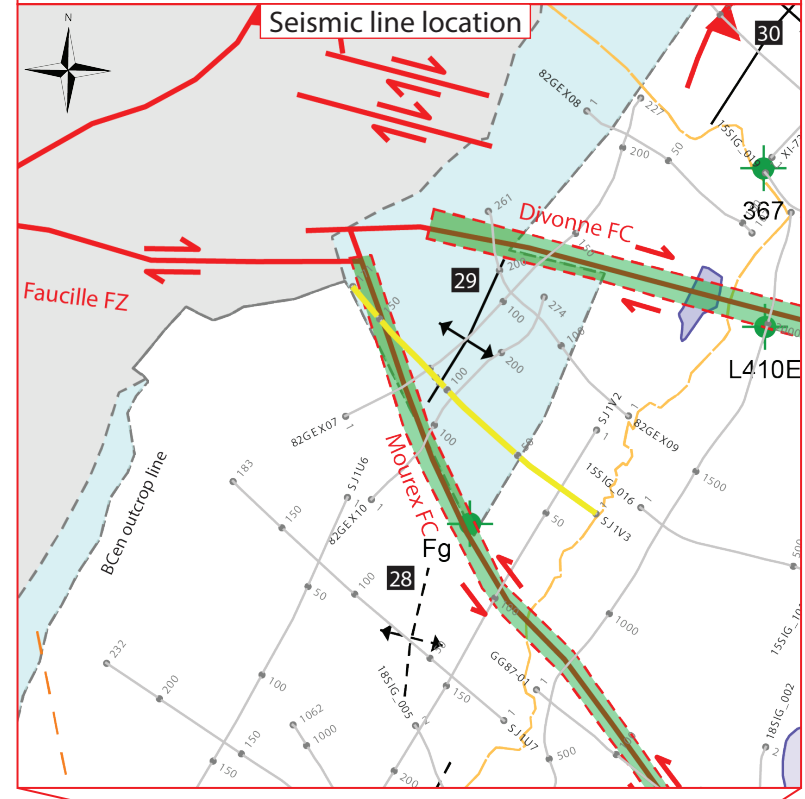
- Reverse fault
- Strike-slip fault
- Normal fault
- Fault corridor

**Other features**

- Seismic lines with trace numbers
- Interpreted seismic lines (left)
- Geomorphologic lineaments
- Wells
- Frontier CH-FR

**Legend for Faults:**  
 FT: Frontal Thrust  
 FBT: Frontal Back Thrust  
 FZ: Fault Zone  
 FC: Fault Corridor

Scale: 0 km 2



#### Structural Interpretation

- Correlated fault stick (with intersection cross with other surveys)
- Non-correlated fault stick
- Conceptual fault stick
- Basal décollement zone
- Fault corridor boundary
- Major dip change line
- Fold axial surface

- Displacement vector pointing towards the observer
- Displacement vector pointing away from the observer
- Displacement vector during Cenozoic
- Displacement vector during Jurassic
- Horizon well defined
- Horizon poorly defined / intra Paleozoic reflections / near Base Quaternary model (GESDEC)
- Horizons TWT at line intersections
- Projected perpendicular to the seismic line

#### Well abbreviation (Map and section)

- Bogis-Bossey L410E
- Grilly Fg
- Crassier 367

#### Other abbreviations

- Trace
- FZ
- FC
- TWT
- proj.
- s
- nT
- nB
- Q
- Cen
- UMa
- LMa
- Do
- Li
- Keu
- Mus
- Mes
- InPal
- Seismic trace
- Fault zone
- Fault corridor
- Two way travelttime
- Projected
- Seconds
- near Top
- near Base
- Quaternary
- Cenozoic
- Upper Malm
- Lower Malm
- Dogger
- Lias
- Keuper
- Muschelkalk
- Mesozoic
- Intra Paleozoic

#### Legend

- Tectonic domains
- Molasse Basin
- Subalpine Molasse
- Internal Jura \*
- External Jura
- Penninic nappes
- Ultrahelvetic nappes
- \* plus the Salève, Gros Foug and Vuache structures in the Molasse Basin
- Other features
- Border
- Seismic Lines
- Thrust
- Alpine Thrust

