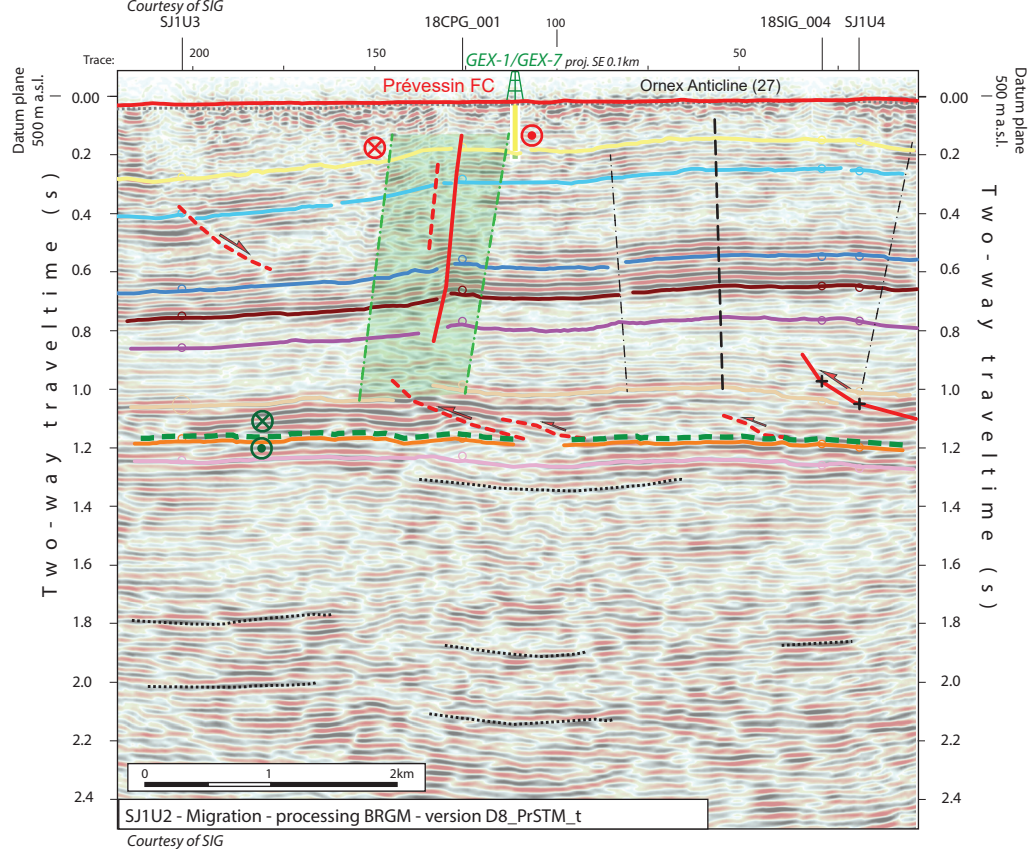
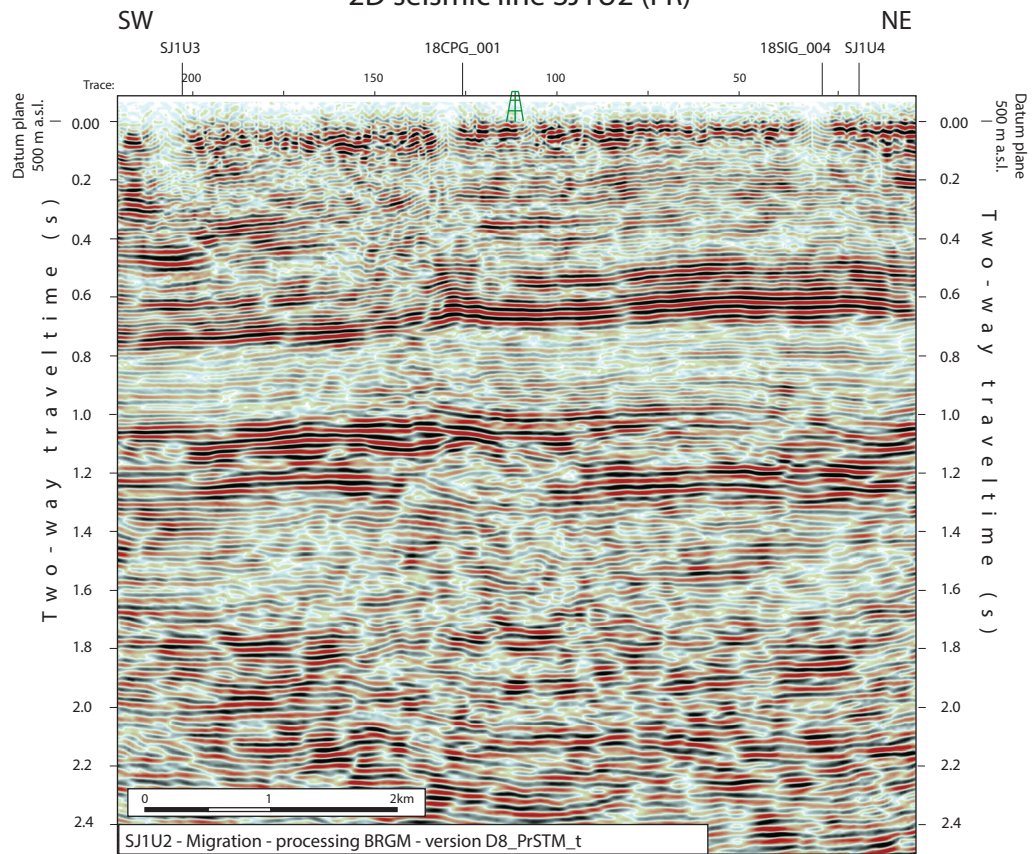


### 2D seismic line SJ1U2 (FR)



**Folds in detached Mesozoic and Cenozoic sedimentary cover**

- Anticline visible on surface and on seismic data (blue -> only in Cenozoic cover)
- Syncline visible on surface and on seismic data (blue -> only in Cenozoic cover)
- Anticline visible only on seismic data (blue -> only in Cenozoic cover)
- Syncline visible only seismic data (blue -> only in Cenozoic cover)

**Main Faults at nBCen (near Base Cenozoic)**

- Reverse fault
- Strike-slip fault
- Normal fault
- Fault corridor

**Other features**

- Seismic lines with trace numbers
- Interpreted seismic lines (left)
- Geomorphologic lineaments
- Wells
- Frontier CH-FR

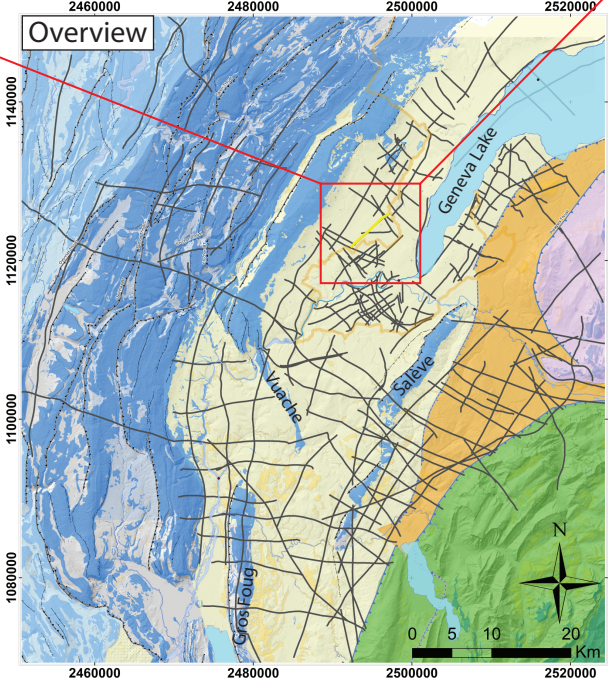
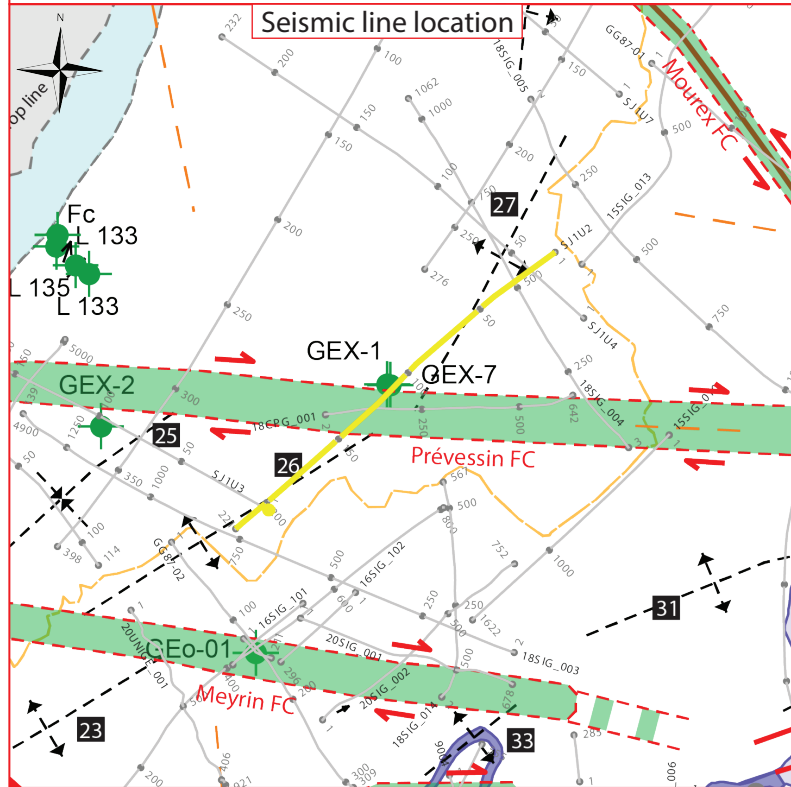
**Fold Names**

- 23 Chouilly Anticline
- 25 Saint - Genis Syncline
- 26 CERN Anticline
- 27 Ornex Anticline
- 31 Chambésy Anticline
- 33 Vernier Anticline

**Areas**

- Molasse Basin (Quaternary or Molasse outcrops)
- Mesozoic outcrops
- Cretaceous outcrops at the boundary between the Molasse Basin and the Jura fold and Thrust Belt

0 km 2



#### Structural Interpretation

- Correlated fault stick (with intersection cross with other surveys)
- Non-correlated fault stick
- Conceptual fault stick
- Basal décollement zone
- Fault corridor boundary
- Major dip change line
- Fold axial surface

- Displacement vector pointing towards the observer
  - Displacement vector pointing away from the observer
  - Displacement vector during Cenozoic
  - Displacement vector during Jurassic
- #### Stratigraphic Interpretation
- Horizon well defined
  - Horizon poorly defined / intra Paleozoic reflections / near Base Quaternary model (GESDEC)
  - Horizons TWT at line intersections
  - Projected perpendicular to the seismic line

Well abbreviation (Map and section)

Crozet	Fc
GEO-01	GEO-01
Gex CD-01	GEX-1
Gex CD-02	GEX-2
Gex CD-07	GEX-7
L 132	L 133
L 135	L 135

Other abbreviations

Trace	Seismic trace
FZ	Fault zone
FC	Fault corridor
TWT	Two way travelttime
proj.	Projected
s	Seconds
nT	near Top
nB	near Base
Q	Quaternary
Cen	Cenozoic
UMa	Upper Malm
LMa	Lower Malm
Do	Dogger
Li	Lias
Keu	Keuper
Mus	Muschelkalk
Mes	Mesozoic
InPal	Intra Paleozoic