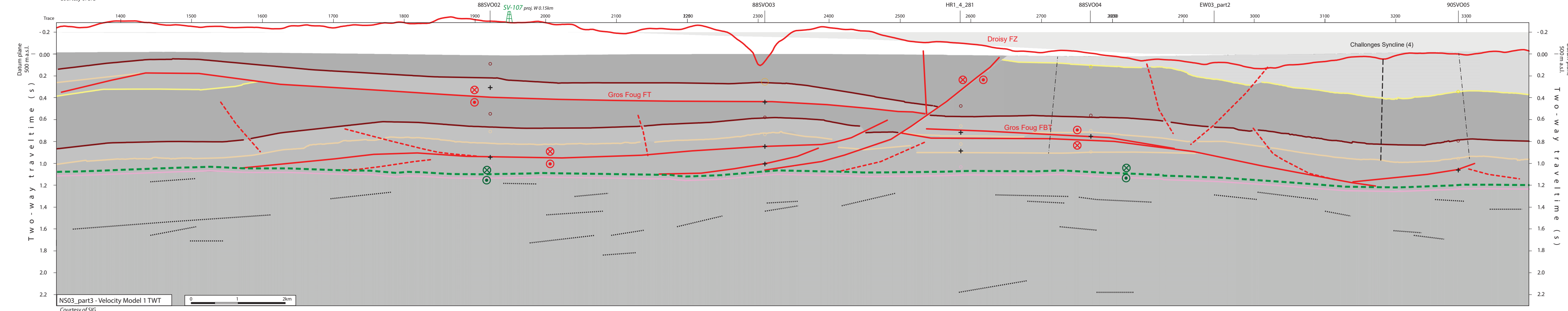
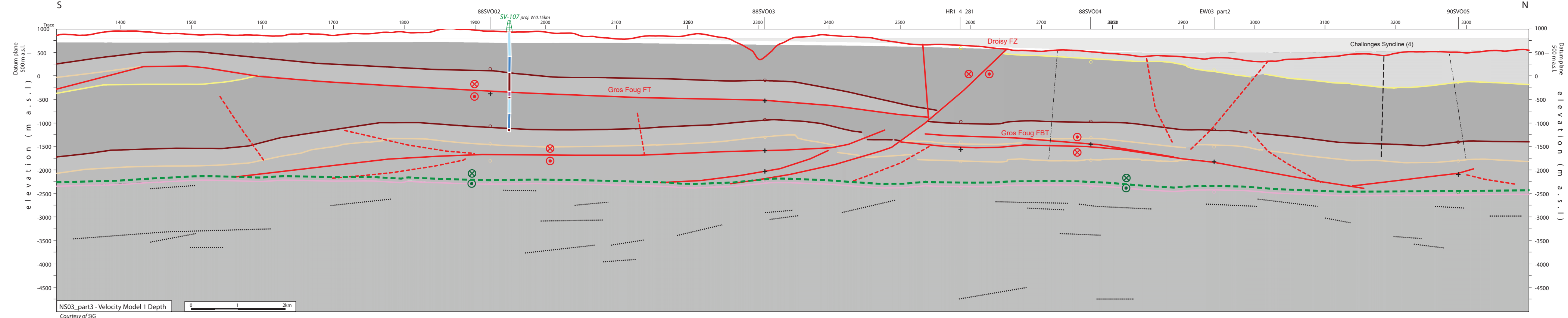


2D seismic line NS03_part3 (FR)



- Structural Interpretation**
- Correlated fault stick (with intersection cross with other surveys)
 - Non-correlated fault stick
 - Conceptual fault stick
 - Basal décollement zone
 - Fault corridor boundary
 - Major dip change line
 - Fold axial surface
 - Displacement vector pointing towards the observer
 - Displacement vector pointing away from the observer
 - Displacement vector during Cenozoic
 - Displacement vector during Jurassic
 - Horizon well defined
 - Horizon poorly defined / intra Paleozoic reflections / near Base Quaternary model (GESDEC)
 - Horizons TWT at line intersections
 - Projected perpendicular to the seismic line

Well abbreviation (Map and section)

Muslége-1	MG-1
Savoie-101	SV-101
Savoie-104	SV-104
Savoie-106	SV-106
Savoie-107	SV-107

Other abbreviations

Trace	Seismic trace
FC	Fault zone
FC	Fault corridor
TWT	Two way traveltime
proj.	Projected
s	Seconds
nT	near Top
nB	near Base
Q	Quaternary
Cen	Cenozoic
UMa	Upper Malm
LMa	Lower Malm
Do	Dogger
Li	Lias
Keu	Keuper
Mus	Muschelkalk
Mes	Mesozoic
InPal	Intra Paleozoic

Well stratigraphy (Map and section)

Yellow	Cenozoic & Quaternary
Orange	Lower Cenozoic (Eocene?)
Green	Cretaceous
Blue	Upper Malm
Light Blue	Lower Malm (Oxfordien)
Dark Blue	Dogger
Purple	Liasic
Brown	Keuper
Light Green	Muschelkalk
Dark Green	Paleozoic

Interval Velocities of Model 1 Rumilly Basin area

3000 m/s	Replacement Vint
3660 m/s	Upper Cenozoic
4482 m/s	Lower Cenozoic
5721 m/s	Cretaceous + Malm
4851 m/s	Dogger+ Lias
5172 m/s	Triassic
5000 m/s	Paleozoic

- Folds in detached Mesozoic and Cenozoic sedimentary cover**
- Anticline visible on surface and on seismic data (blue -> only in Cenozoic cover)
 - Syncline visible on surface and on seismic data (blue -> only in Cenozoic cover)
 - Anticline visible only on seismic data (blue -> only in Cenozoic cover)
 - Syncline visible only seismic data (blue -> only in Cenozoic cover)
- Main Faults at nBCen (near Base Cenozoic)**
- Reverse fault
 - Strike-slip fault
 - Normal fault
 - Fault corridor
- Other features**
- Seismic lines with trace numbers
 - Interpreted seismic lines (left)
 - Geomorphologic lineaments
 - Wells
 - Frontier CH-FR
- Fold Names**
- Frangy Syncline
 - Muslége Anticline
 - Mt des Princes Anticline
 - Challonges Syncline
 - Gros Foug Anticline
 - Mt d'âge Anticline
 - Marlioz Syncline
 - Minzier Anticline
- Areas**
- Molasse Basin (Quaternary or Molasse outcrops)
 - Mesozoic outcrops
 - Cretaceous outcrops at the boundary between the Molasse Basin and the Jura fold and Thrust Belt

