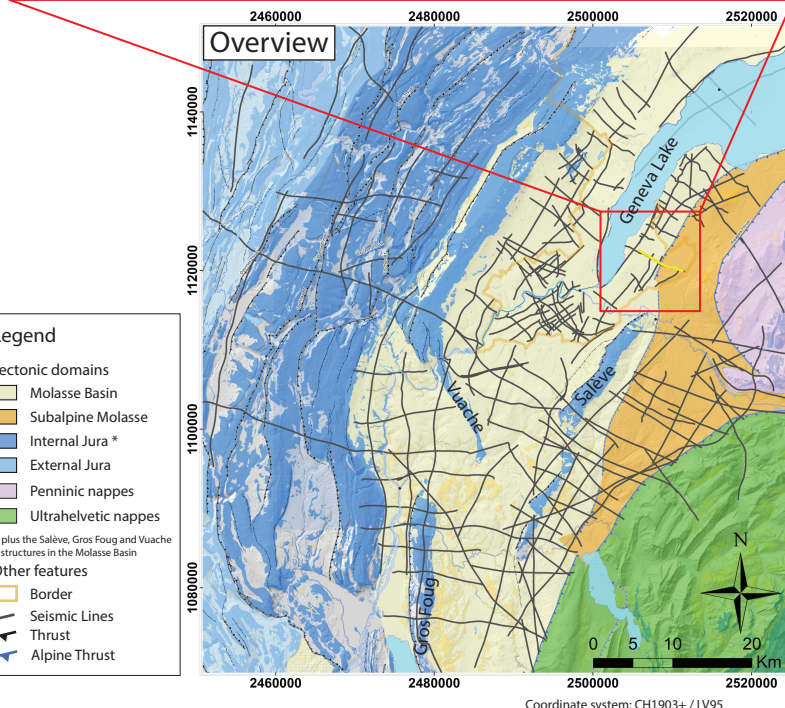
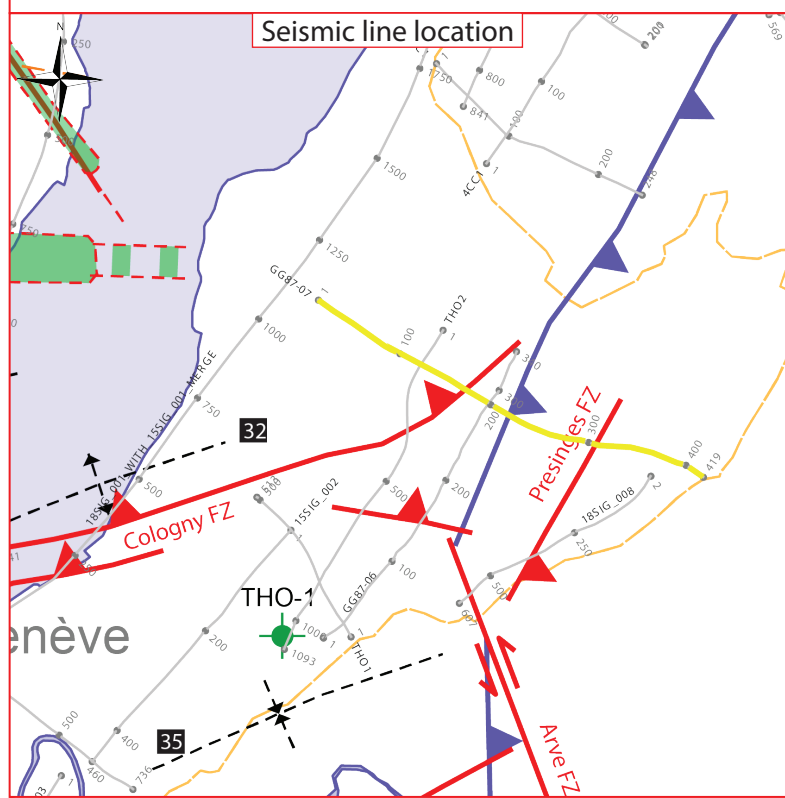
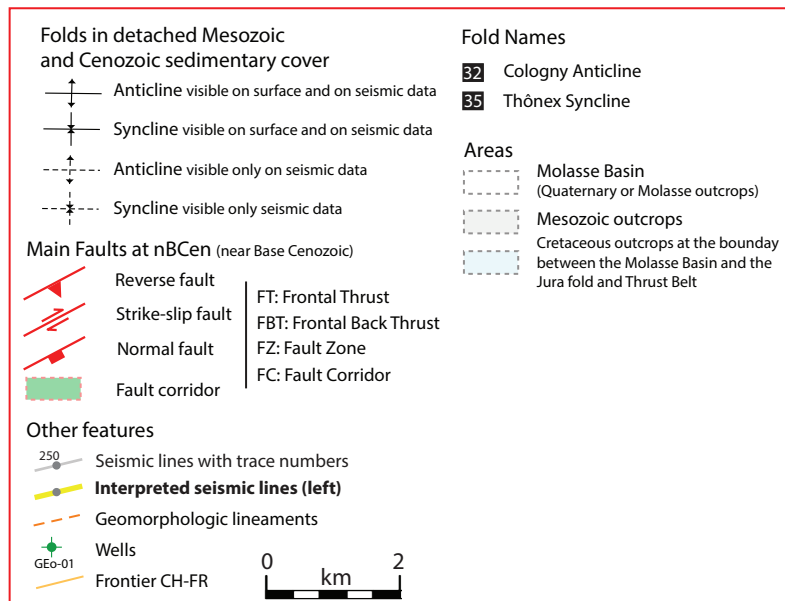
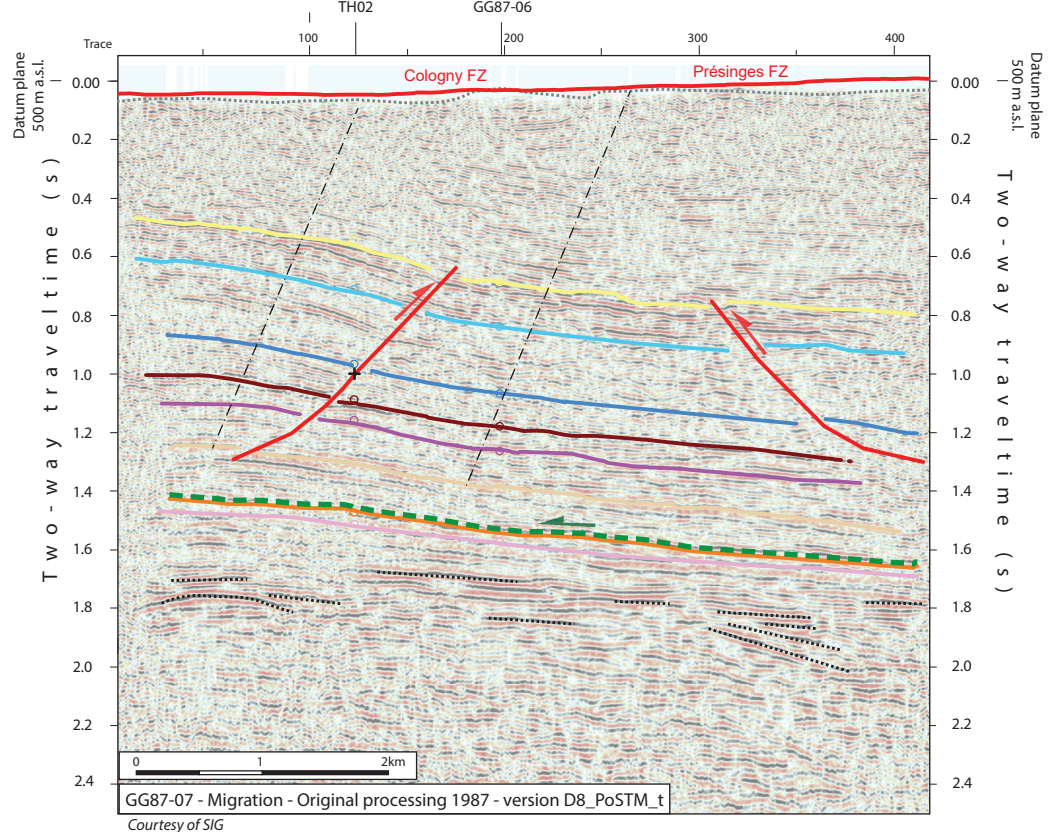
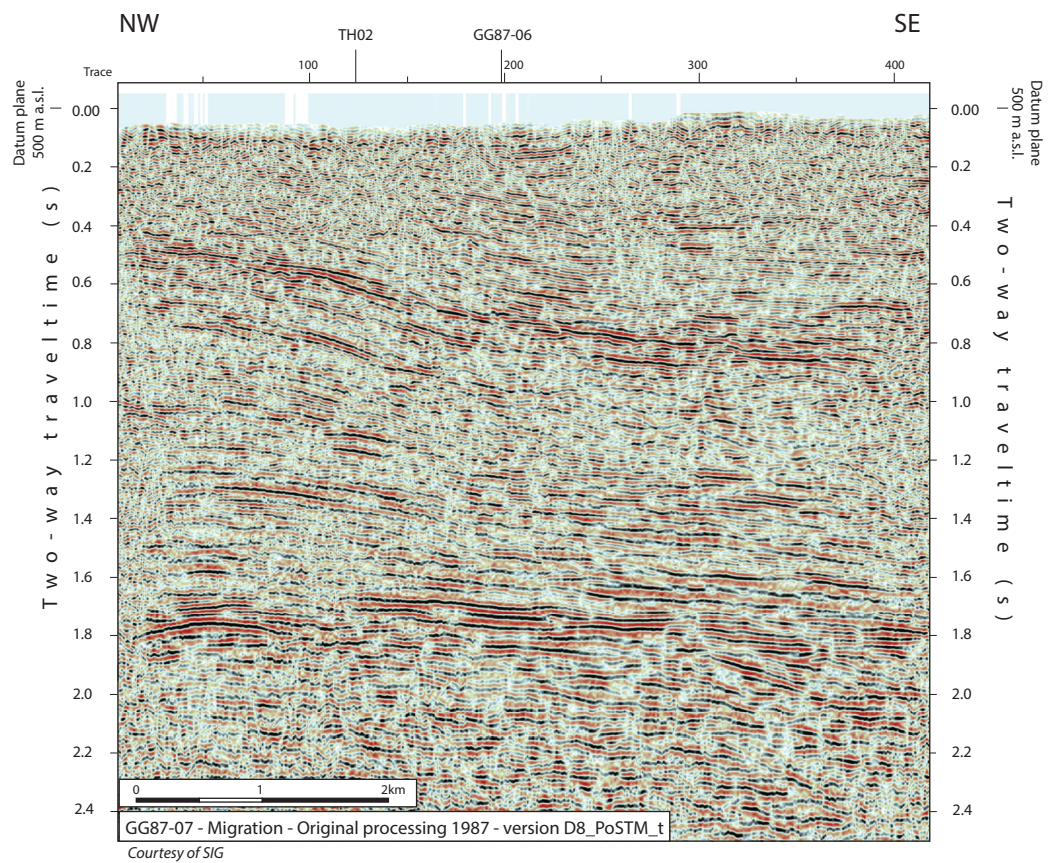


### 2D seismic line GG87-07 (CH)



- Structural Interpretation**
- Correlated fault stick (with intersection cross with other surveys)
  - Non-correlated fault stick
  - Conceptual fault stick
  - Basal décollement zone
  - Fault corridor boundary
  - Major dip change line
  - Fold axial surface

- Stratigraphic Interpretation**
- Displacement vector pointing towards the observer
  - Displacement vector pointing away from the observer
  - Horizon well defined
  - Horizon poorly defined / intra Paleozoic reflections / near Base Quaternary model (GESDEC)
  - Horizons TWT at line intersections
  - Projected perpendicular to the seismic line

- Well abbreviation (Map and section)**
- Thônex-1 THO-1

- Other abbreviations**
- Trace Seismic trace
  - FZ Fault zone
  - FC Fault corridor
  - TWT Two way traveltime
  - proj. Projected
  - s Seconds
  - nT near Top
  - nB near Base
  - Q Quaternary
  - Cen Cenozoic
  - UMa Upper Malm
  - LMa Lower Malm
  - Do Dogger
  - Li Lias
  - Keu Keuper
  - Mus Muschelkalk
  - Mes Mesozoic
  - InPal Intra Paleozoic

- Legend**
- Tectonic domains**
- Molasse Basin
  - Subalpine Molasse
  - Internal Jura \*
  - External Jura
  - Penninic nappes
  - Ultrahelvetic nappes
- \* plus the Salève, Gros Foug and Vuache structures in the Molasse Basin
- Other features**
- Border
  - Seismic Lines
  - Thrust
  - Alpine Thrust