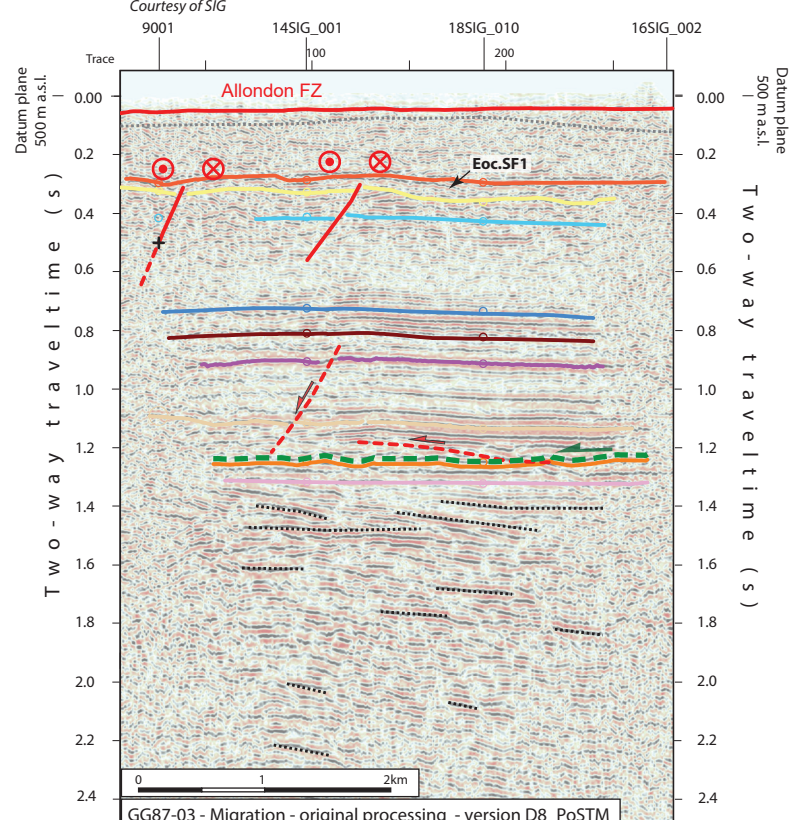
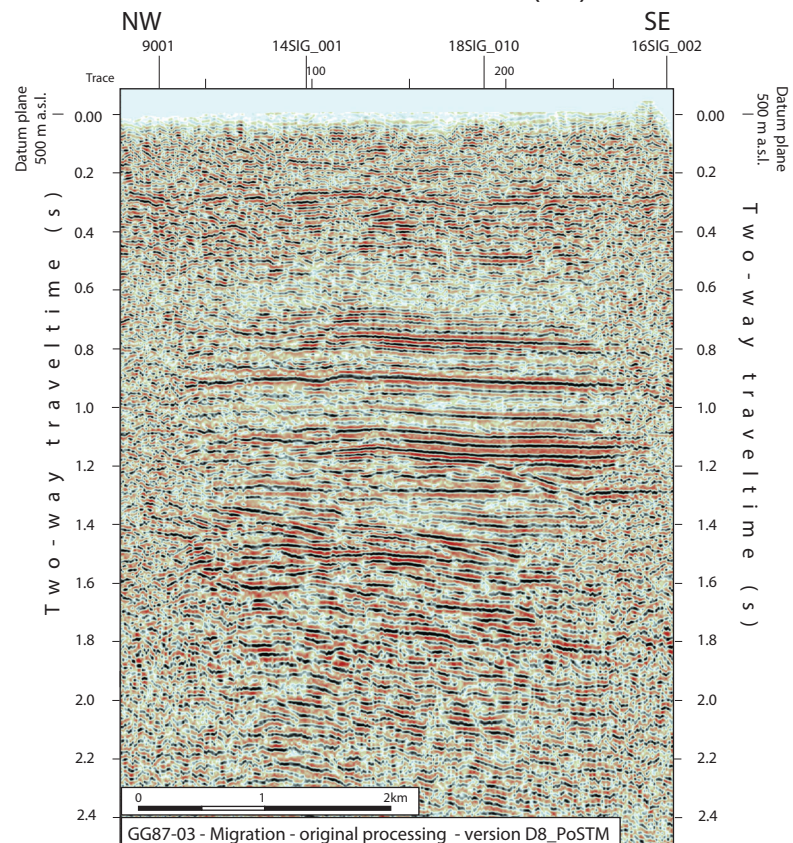


2D seismic line GG87-03 (CH)



- Topo
- nBQ
- InCen
- nBCen
- nTUMa
- nTLMa
- nTDo
- nTLi
- nTKeu
- nTMus
- nBMes
- InPal

Folds in detached Mesozoic and Cenozoic sedimentary cover

- Anticline visible on surface and on seismic data (blue -> only in Cenozoic cover)
- Syncline visible on surface and on seismic data (blue -> only in Cenozoic cover)
- Anticline visible only on seismic data (blue -> only in Cenozoic cover)
- Syncline visible only seismic data (blue -> only in Cenozoic cover)

Fold Names

- 18 Humilly Anticline
- 22 CERN Syncline
- 24 Bernex Syncline
- 33 Vernier Anticline

Areas

- Molasse Basin (Quaternary or Molasse outcrops)
- Mesozoic outcrops
- Cretaceous outcrops at the boundary between the Molasse Basin and the Jura fold and Thrust Belt

Main Faults at nBCen (near Base Cenozoic)

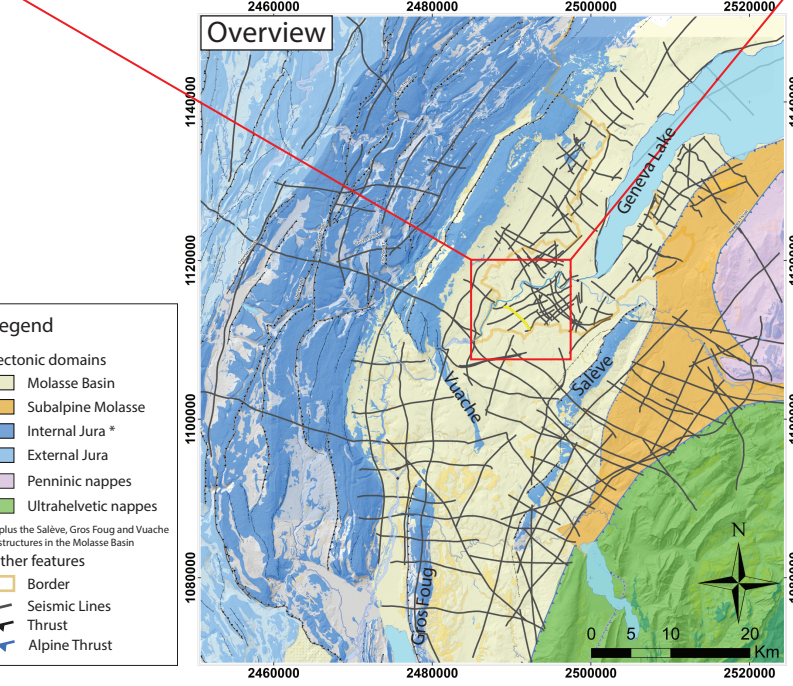
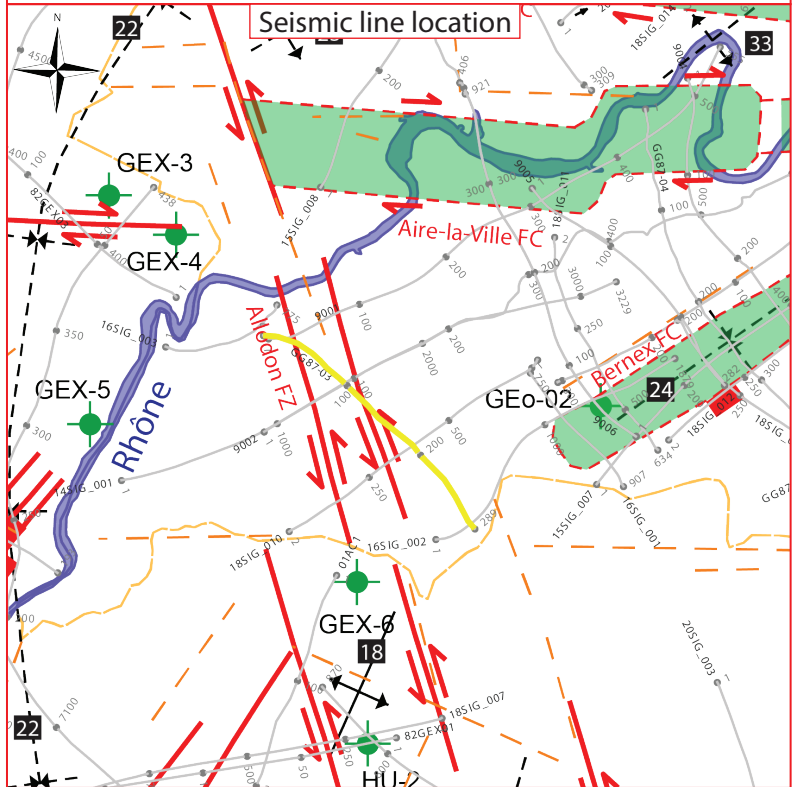
- Reverse fault
- Strike-slip fault
- Normal fault
- Fault corridor

- FT: Frontal Thrust
- FBT: Frontal Back Thrust
- FZ: Fault Zone
- FC: Fault Corridor

Other features

- Seismic lines with trace numbers
- Interpreted seismic lines (left)
- Geomorphologic lineaments
- Wells
- Frontier CH-FR

0 km 2



Legend

- Tectonic domains
- Molasse Basin
- Subalpine Molasse
- Internal Jura *
- External Jura
- Penninic nappes
- Ultrahelvetian nappes
- * plus the Salève, Gros Foug and Vuache structures in the Molasse Basin
- Other features
- Border
- Seismic Lines
- Thrust
- Alpine Thrust

Structural Interpretation

- Correlated fault stick (with intersection cross with other surveys)
- Non-correlated fault stick
- Conceptual fault stick
- Basal décollement zone
- Fault corridor boundary
- Major dip change line
- Fold axial surface

- Displacement vector pointing towards the observer
- Displacement vector pointing away from the observer
- Displacement vector during Cenozoic
- Displacement vector during Jurassic
- Horizon well defined
- Horizon poorly defined / intra Paleozoic reflections / near Base Quaternary model (GESDEC)
- Horizons TWT at line intersections
- Projected perpendicular to the seismic line

Well abbreviation (Map and section)

- Geo-02
- Gex CD-03
- Gex CD-04
- Gex CD-05
- Gex CD-06
- Humilly-2
- Geo-03
- GEX-3
- GEX-4
- GEX-5
- GEX-6
- HU-2

Seismic facies (SF) (see chap 4.2.)

- Unit.SFx (seismic facies name)
- Geometrical bedform and termination pattern

Other abbreviations

- Trace
- FZ
- FC
- TWT
- proj.
- s
- nT
- nB
- Q
- Cen
- UMa
- LMa
- Do
- Li
- Keu
- Mus
- Mes
- InPal
- Seismic trace
- Fault zone
- Fault corridor
- Two way traveltime
- Projected
- Seconds
- near Top
- near Base
- Quaternary
- Cenozoic
- Upper Malm
- Lower Malm
- Dogger
- Lias
- Keuper
- Muschelkalk
- Mesozoic
- Intra Paleozoic