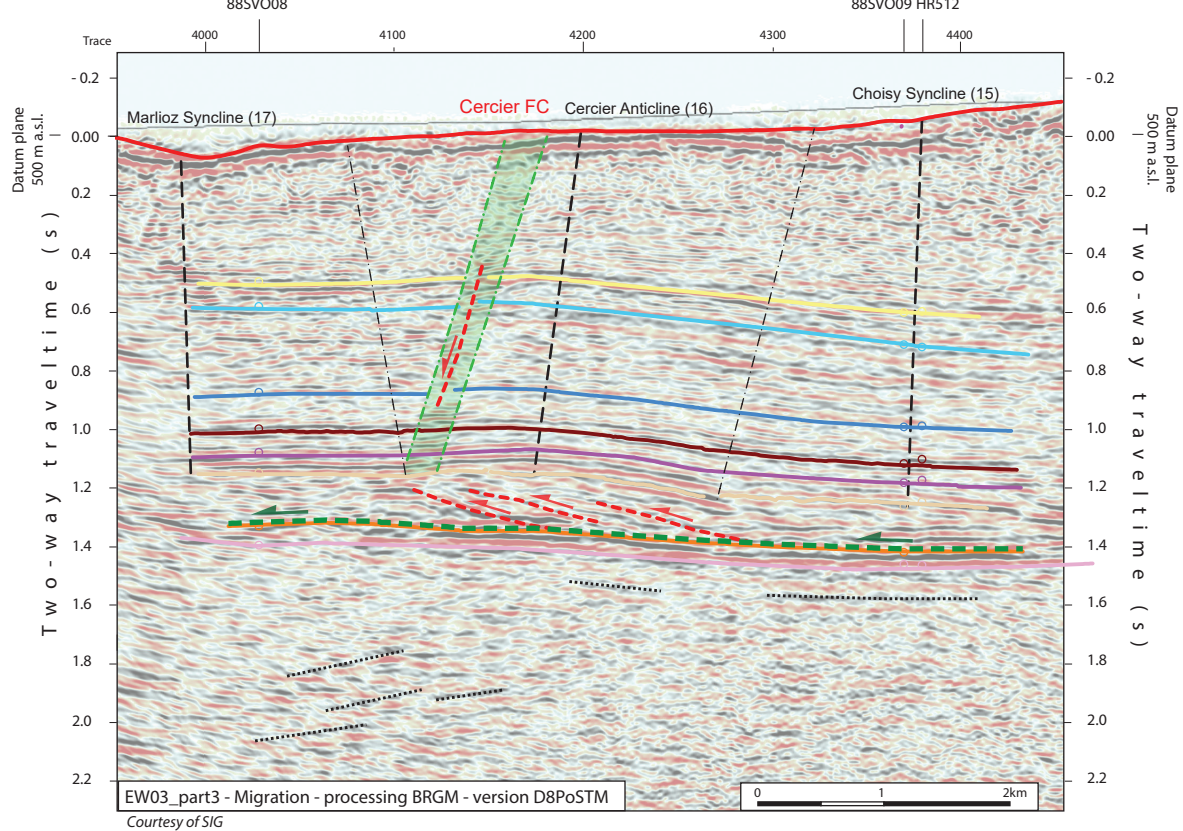
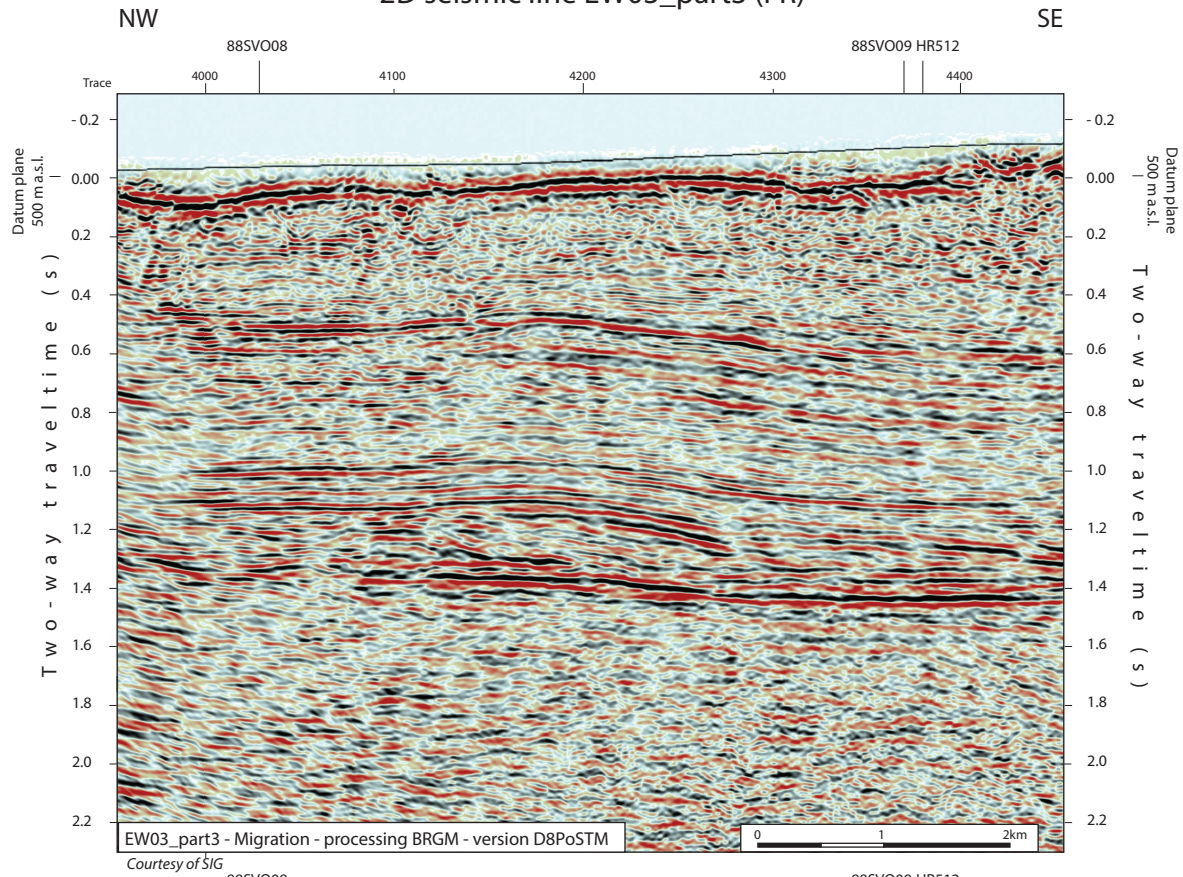


2D seismic line EW03_part3 (FR)



Structural Interpretation

- Correlated fault stick (with intersection cross with other surveys)
- Non-correlated fault stick
- Conceptual fault stick
- Basal décollement zone
- Fault corridor boundary
- Major dip change line
- Fold axial surface

- Displacement vector pointing towards the observer
- Displacement vector pointing away from the observer

Stratigraphic Interpretation

- Horizon well defined
- Horizon poorly defined / intra Paleozoic reflections / near Base Quaternary model (GESDEC)
- Horizons TWT at line intersections
- Projected perpendicular to the seismic line

Abbreviations

- | | |
|-------|--------------------|
| Trace | Seismic trace |
| FZ | Fault zone |
| FC | Fault corridor |
| TWT | Two way traveltime |
| proj. | Projected |
| s | Seconds |
| nT | near Top |
| nB | near Base |
| Q | Quaternary |
| Cen | Cenozoic |
| UMa | Upper Malm |
| LMa | Lower Malm |
| Do | Dogger |
| Li | Lias |
| Keu | Keuper |
| Mus | Muschelkalk |
| Mes | Mesozoic |
| InPal | Intra Paleozoic |

Folds in detached Mesozoic and Cenozoic sedimentary cover

- Anticline visible on surface and on seismic data
- Syncline visible on surface and on seismic data
- Anticline visible only on seismic data
- Syncline visible only seismic data

Fold Names

- 13 Salève Anticline
- 15 Choisy Syncline
- 16 Cercier Anticline
- 17 Marlioz Syncline
- 21 Minzier Anticline

Main Faults at nBCen (near Base Cenozoic)

- Reverse fault
- Strike-slip fault
- Normal fault
- Fault corridor
- FT: Frontal Thrust
- FBT: Frontal Back Thrust
- FZ: Fault Zone
- FC: Fault Corridor

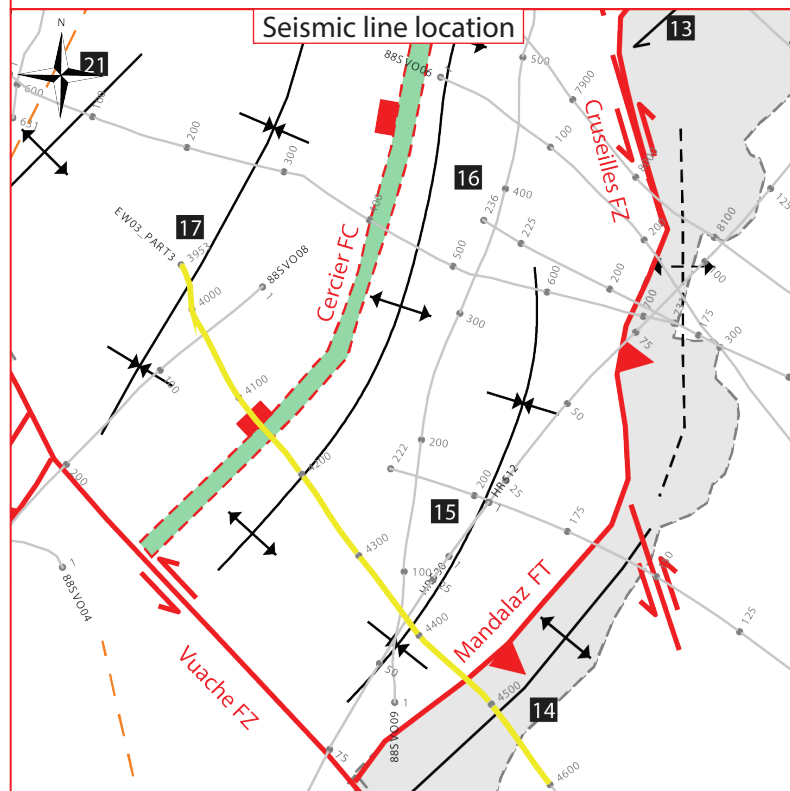
Areas

- Molasse Basin (Quaternary or Molasse outcrops)
- Mesozoic outcrops
- Cretaceous outcrops at the boundary between the Molasse Basin and the Jura fold and Thrust Belt

Other features

- Seismic lines with trace numbers
- Interpreted seismic lines (left)
- Geomorphologic lineaments
- Wells
- Frontier CH-FR

0 km 2



Topo
nBQ

nBCen
nTUMa

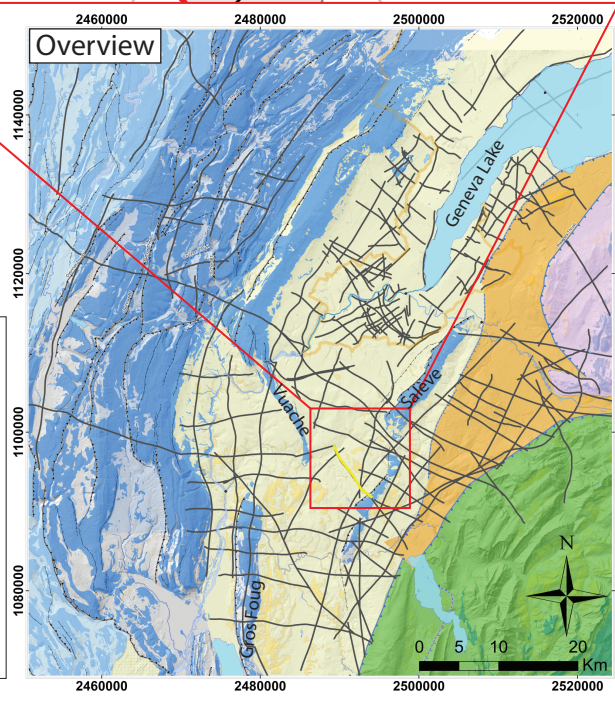
nTLMa
nTDo
nTLi
nTKeu

nTMus
nBMes

InPal

Legend

- Tectonic domains
 - Molasse Basin
 - Subalpine Molasse
 - Internal Jura *
 - External Jura
 - Penninic nappes
 - Ultrahelvetic nappes
- * plus the Salève, Gros Foug and Vuache structures in the Molasse Basin
- Other features
 - Border
 - Seismic Lines
 - Thrust
 - Alpine Thrust



Coordinate system: CH1903+ / LV95