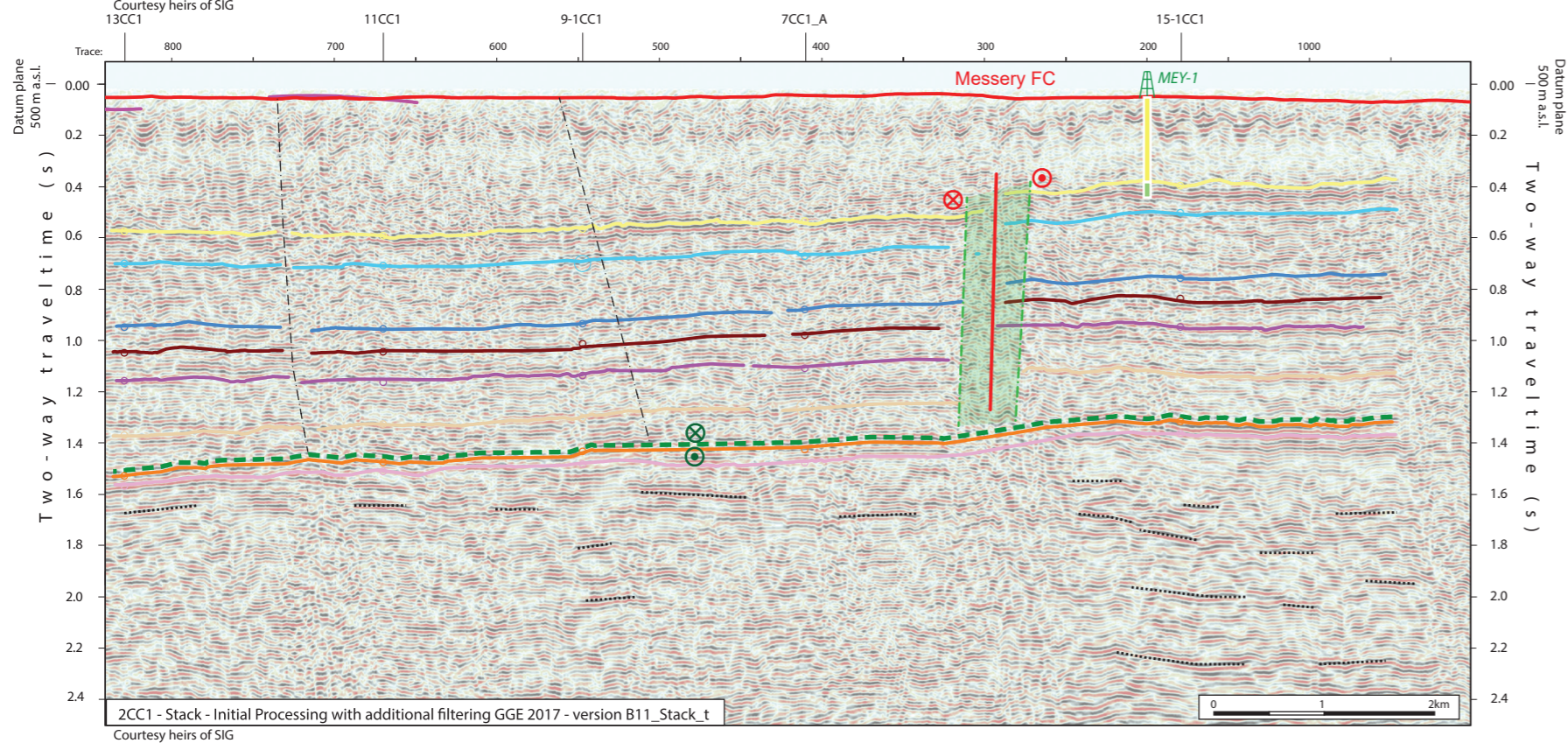
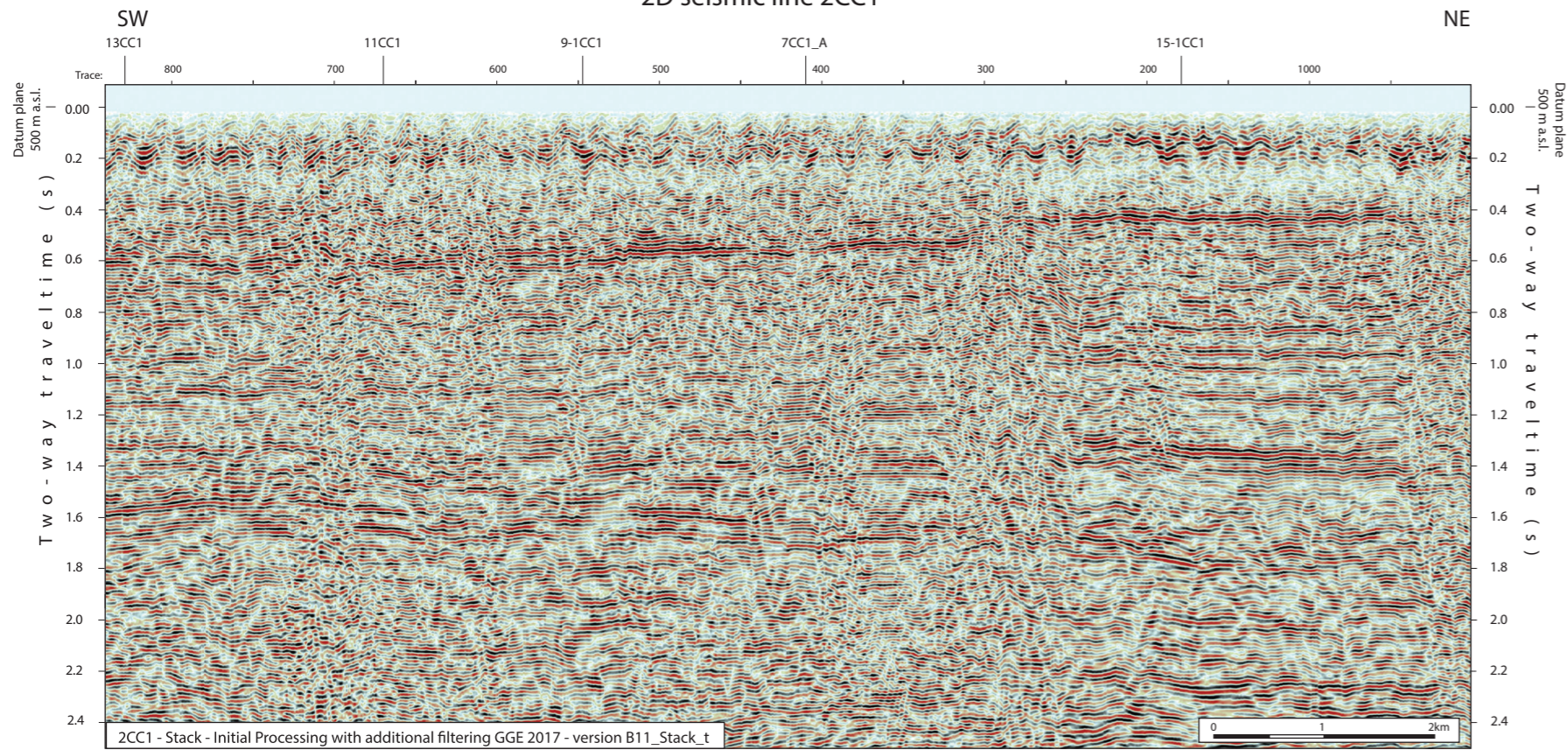


2D seismic line 2CC1



Structural Interpretation

- Correlated fault stick (with intersection cross with other surveys)
- Non-correlated fault stick
- Conceptual fault stick
- Basal décollement zone
- Fault corridor boundary
- Major dip change line
- Fold axial surface

Stratigraphic Interpretation

- Horizon well defined
- Horizon poorly defined / intra Paleozoic reflections / near Base Quaternary model (GESDEC)
- Horizons TWT at line intersections
- Projected perpendicular to the seismic line

Well abbreviation (Map and section)

- MEY-1 Messery-1
- MB-1 Mont-de-Boisy-1

Well stratigraphy

- Cenozoic & Quaternary
- Cretaceous

Other abbreviations

- | | |
|-------|--------------------|
| Trace | Seismic trace |
| FZ | Fault zone |
| FC | Fault corridor |
| TWT | Two way traveltime |
| proj. | Projected |
| s | Seconds |
| nT | near Top |
| nB | near Base |
| Q | Quaternary |
| Cen | Cenozoic |
| UMa | Upper Malm |
| LMa | Lower Malm |
| Do | Dogger |
| Li | Lias |
| Keu | Keuper |
| Mus | Muschelkalk |
| Mes | Mesozoic |
| InPal | Intra Paleozoic |

Folds in Cenozoic sedimentary cover

- Anticline visible on surface and on seismic data
- Syncline visible on surface and on seismic data
- Anticline visible only on surface data
- Syncline visible only surface data

Fold Names

- Mont-de-Boisy Anticline

Areas

- Molasse Basin (Quaternary or Molasse outcrops)
- Mesozoic outcrops
- Cretaceous outcrops at the boundary between the Molasse Basin and the Jura fold and Thrust Belt

Main Faults at nBCen (near Base Cenozoic)

- Reverse fault
- Strike-slip fault
- Normal fault
- Fault corridor

FT: Frontal Thrust
 FBT: Frontal Back Thrust
 FZ: Fault Zone
 FC: Fault Corridor

Other features

- Seismic lines with trace numbers
- Interpreted seismic lines (left)
- Geomorphologic lineaments
- Wells
- Frontier CH-FR

0 km 2

