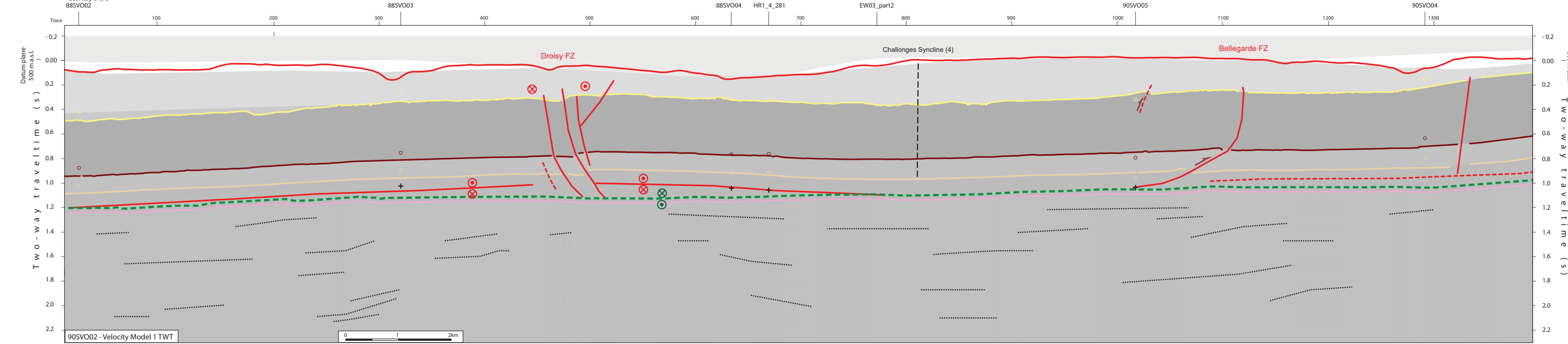
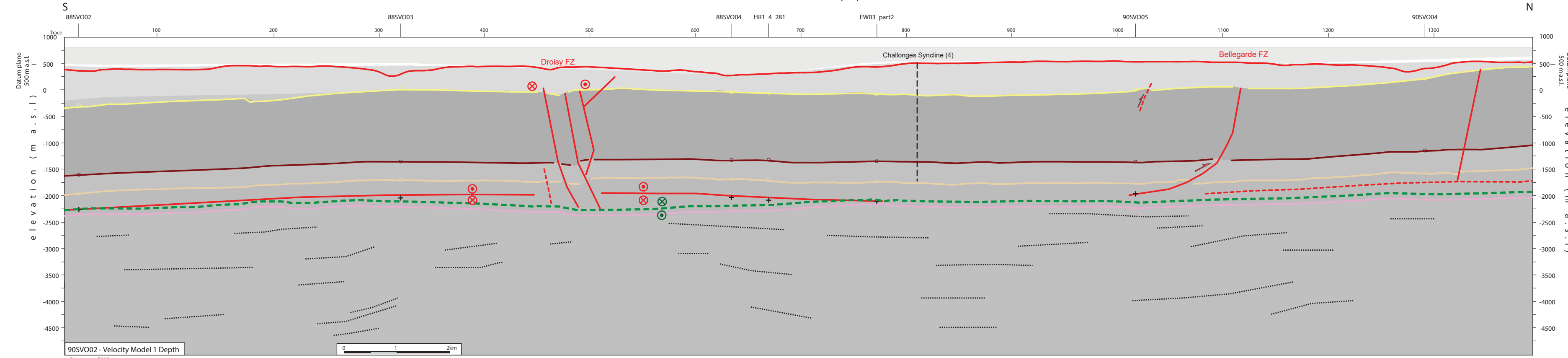


2D seismic line 90SVO02 (FR)



- Structural Interpretation**
- Correlated fault stick (with intersection cross with other surveys)
 - Non-correlated fault stick
 - Conceptual fault stick
 - Basal décollement zone
 - Fault corridor boundary
 - Major dip change line
 - Fold axial surface
- Stratigraphic Interpretation**
- Horizon well defined
 - Horizon poorly defined / intra Paleozoic reflections / near Base Quaternary model (GESDEC)
 - Horizons TWT at line intersections
 - Projected perpendicular to the seismic line
- Well abbreviation (Map and section)**
- | | |
|------------|--------|
| Musiège-1 | MG-1 |
| Savoie-106 | SV-106 |
| Savoie-107 | SV-107 |
| Humilly-1 | HU-1 |
- Other abbreviations**
- | | |
|-------|--------------------|
| Trace | Seismic trace |
| FZ | Fault zone |
| FC | Fault corridor |
| TWT | Two way traveltime |
| proj. | Projected |
| s | Seconds |
| nT | near Top |
| nB | near Base |
| Q | Quaternary |
| Cen | Cenozoic |
| UMa | Upper Malm |
| LMa | Lower Malm |
| Do | Dogger |
| Li | Lias |
| Keu | Keuuper |
| Mus | Muschelkalk |
| Mes | Mesozoic |
| InPal | Intra Paleozoic |
- Interval Velocities of Model 1 Rumilly Basin area**
- | | |
|----------|-------------------|
| 3000 m/s | Replacement Vint |
| 3660 m/s | Upper Cenozoic |
| 4482 m/s | Lower Cenozoic |
| 5721 m/s | Cretaceous + Malm |
| 4851 m/s | Doggers- Lias |
| 5172 m/s | Triassic |
| 5000 m/s | Paleozoic |

- Folds in detached Mesozoic and Cenozoic sedimentary cover**
- Anticline visible on surface and on seismic data (blue -> only in Cenozoic cover)
 - Syncline visible on surface and on seismic data (blue -> only in Cenozoic cover)
 - Anticline visible only on seismic data (blue -> only in Cenozoic cover)
 - Syncline visible only seismic data (blue -> only in Cenozoic cover)
- Main Faults at nBCen (near Base Cenozoic)**
- Reverse fault
 - Strike-slip fault
 - Normal fault
 - Fault corridor
- Other features**
- Seismic lines with trace numbers
 - Interpreted seismic lines (left)
 - Geomorphologic lineaments
 - Wells
 - Frontier CH-FR
- Fold Names**
- Frangy Syncline
 - Musiège Anticline
 - Mt des Prines Anticline
 - Challonges Syncline
 - Gros Foug Anticline
 - Minzier Anticline
 - CERN Anticline
- Areas**
- Molasse Basin (Quaternary or Molasse outcrops)
 - Mesozoic outcrops
 - Cretaceous outcrops at the boundary between the Molasse Basin and the Jura fold and Thrust Belt
- Legend**
- Tectonic domains
 - Molasse Basin
 - Subalpine Molasse
 - Internal Jura *
 - External Jura
 - Penninic nappes
 - Ultrahelvetic nappes
 - Border
 - Seismic Lines
 - Thrust
 - Alpine Thrust

