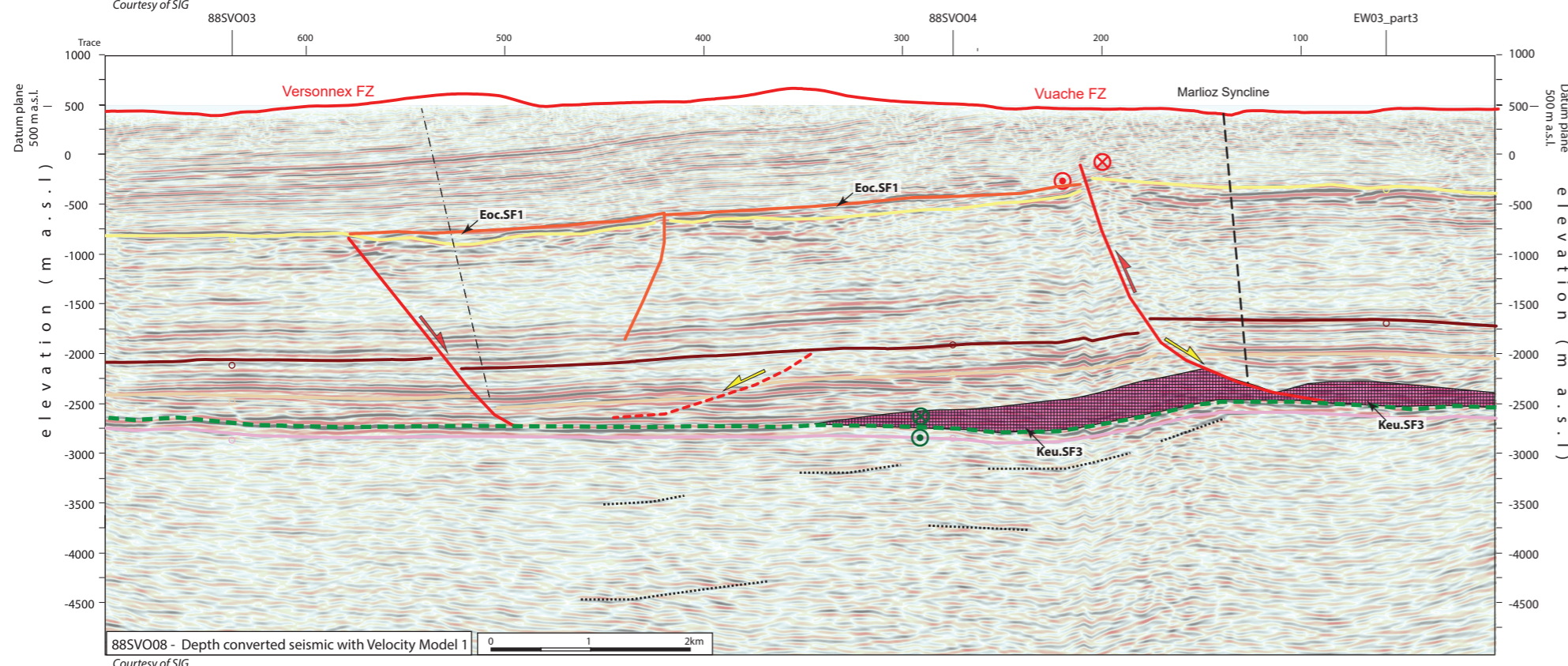
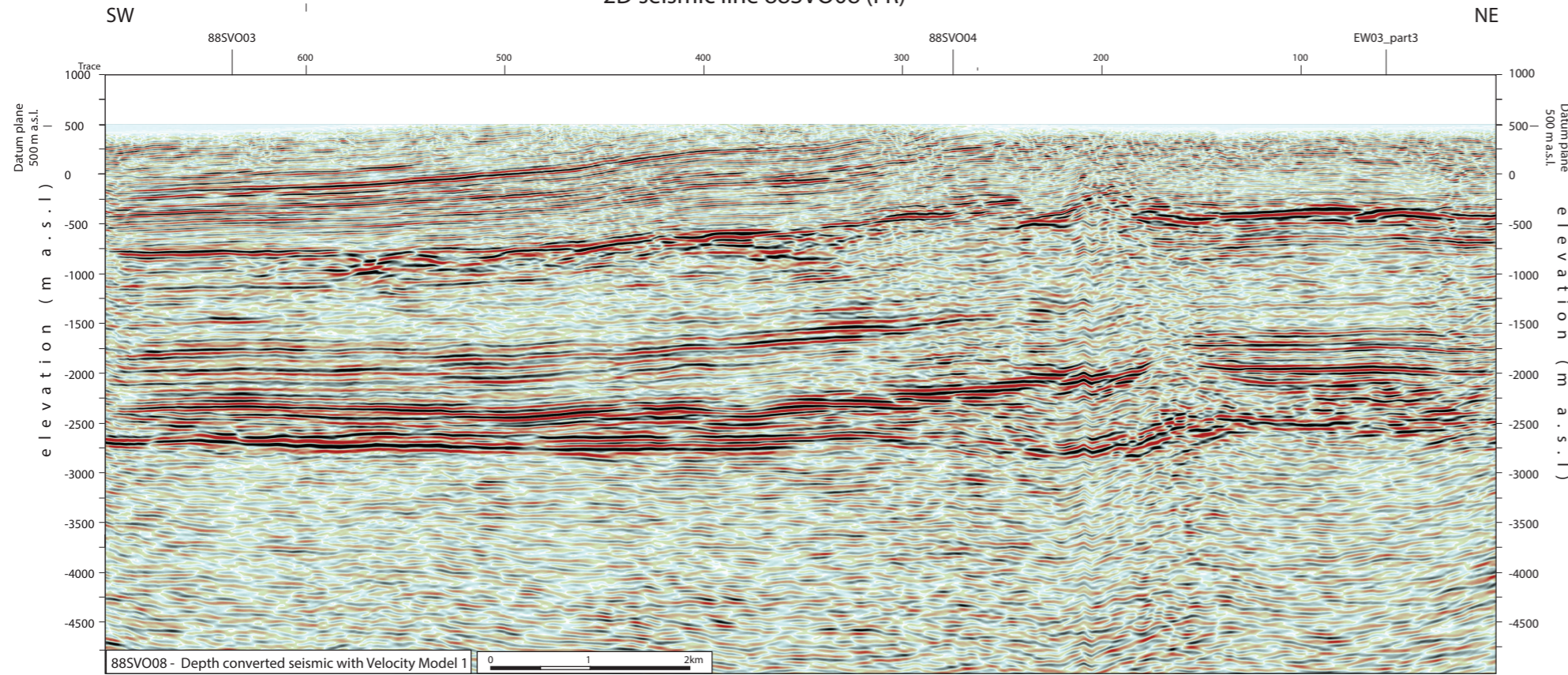


2D seismic line 88SVO08 (FR)



Folds in detached Mesozoic and Cenozoic sedimentary cover

- Anticline visible on surface and on seismic data (blue -> only in Cenozoic cover)
- Syncline visible on surface and on seismic data (blue -> only in Cenozoic cover)
- Anticline visible only on seismic data (blue -> only in Cenozoic cover)
- Syncline visible only seismic data (blue -> only in Cenozoic cover)

Main Faults at nBCen (near Base Cenozoic)

- Reverse fault
- Strike-slip fault
- Normal fault
- Fault corridor

Other features

- Seismic lines with trace numbers
- Interpreted seismic lines (left)
- Geomorphologic lineaments
- Wells
- Frontier CH-FR

Fold Names

- Frangy Syncline
- Musiège Anticline
- Mt des Princes Anticline
- Mt d'âge Anticline
- Mandalaz Anticline
- Choisy Syncline
- Cercier Anticline
- Marlioz Syncline
- Minzier Anticline

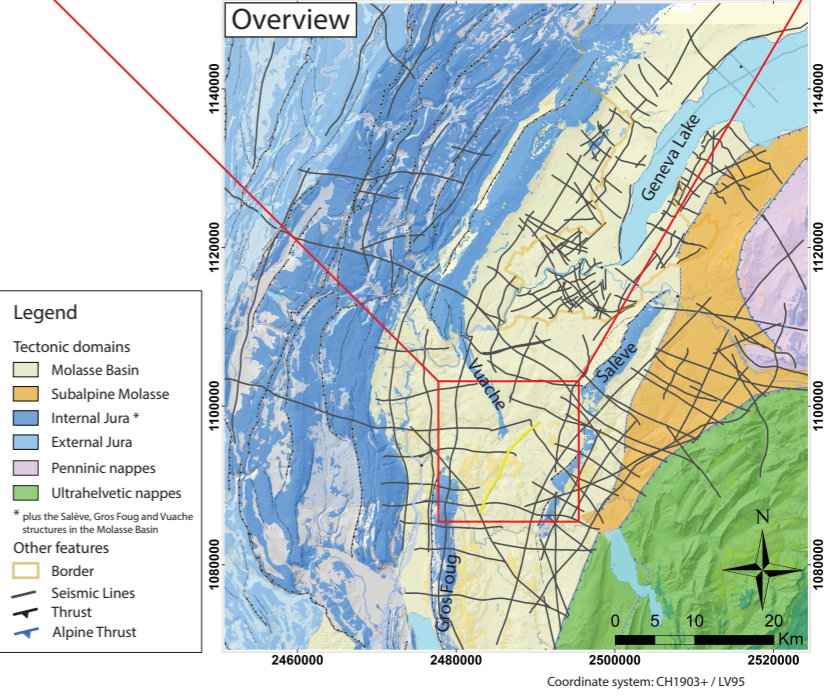
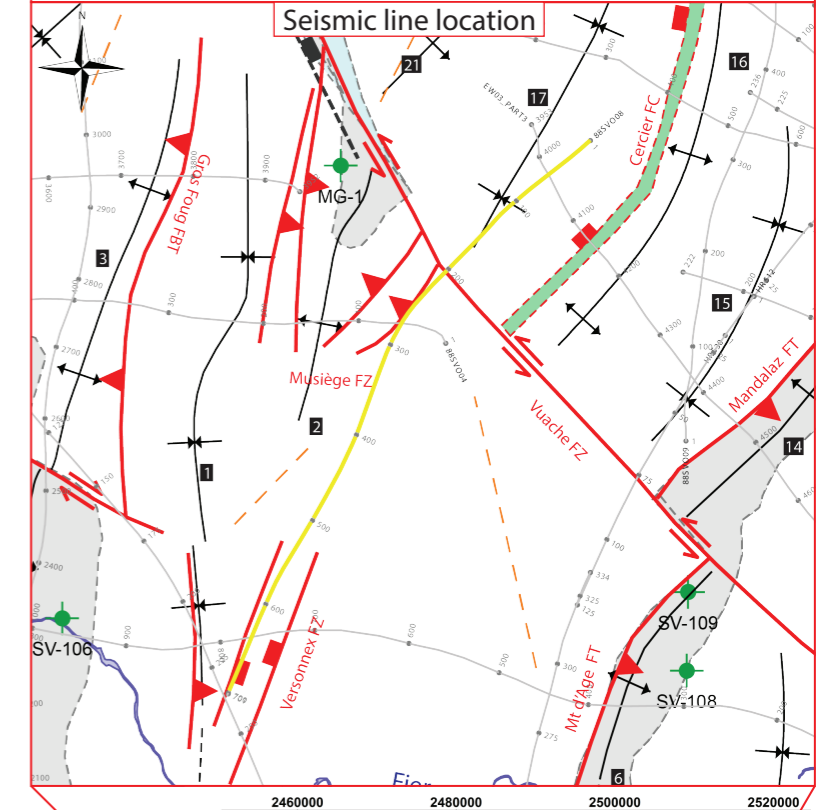
Areas

- Molasse Basin (Quaternary or Molasse outcrops)
- Mesozoic outcrops
- Cretaceous outcrops at the boundary between the Molasse Basin and the Jura fold and Thrust Belt

Legend

- FT: Frontal Thrust
- FBT: Frontal Back Thrust
- FZ: Fault Zone
- FC: Fault Corridor

0 km 2



Structural Interpretation

- Correlated fault stick (with intersection cross with other surveys)
- Non-correlated fault stick
- Conceptual fault stick
- Basal décollement zone
- Fault corridor boundary
- Major dip change line
- Fold axial surface

Stratigraphic Interpretation

- Displacement vector pointing towards the observer
- Displacement vector pointing away from the observer
- Displacement vector during Cenozoic
- Displacement vector during Jurassic
- Horizon well defined
- Horizon poorly defined / intra Paleozoic reflections / near Base Quaternary model (GESDEC)
- Horizons TWT at line intersections
- Projected perpendicular to the seismic line

Well abbreviation (Map and section)

- Savoie-106 SV-106
- Savoie-108 SV-108
- Savoie-109 SV-109
- Musiège-1 MG-1
- Unit.SFx (seismic facies name)
- Keu.SF3 (likely haalite dominated layer)
- Geometrical bedform and termination pattern

Other abbreviations

- Trace Seismic trace
- FZ Fault zone
- FC Fault corridor
- TWT Two way traveltime
- proj. Projected
- s Seconds
- nT near Top
- nB near Base
- Q Quaternary
- Cen Cenozoic
- UMa Upper Malm
- LMa Lower Malm
- Do Dogger
- Li Lias
- Keu Keuper
- Mus Muschelkalk
- Mes Mesozoic
- InPal Intra Paleozoic

Coordinate system: CH1903+ / LV95