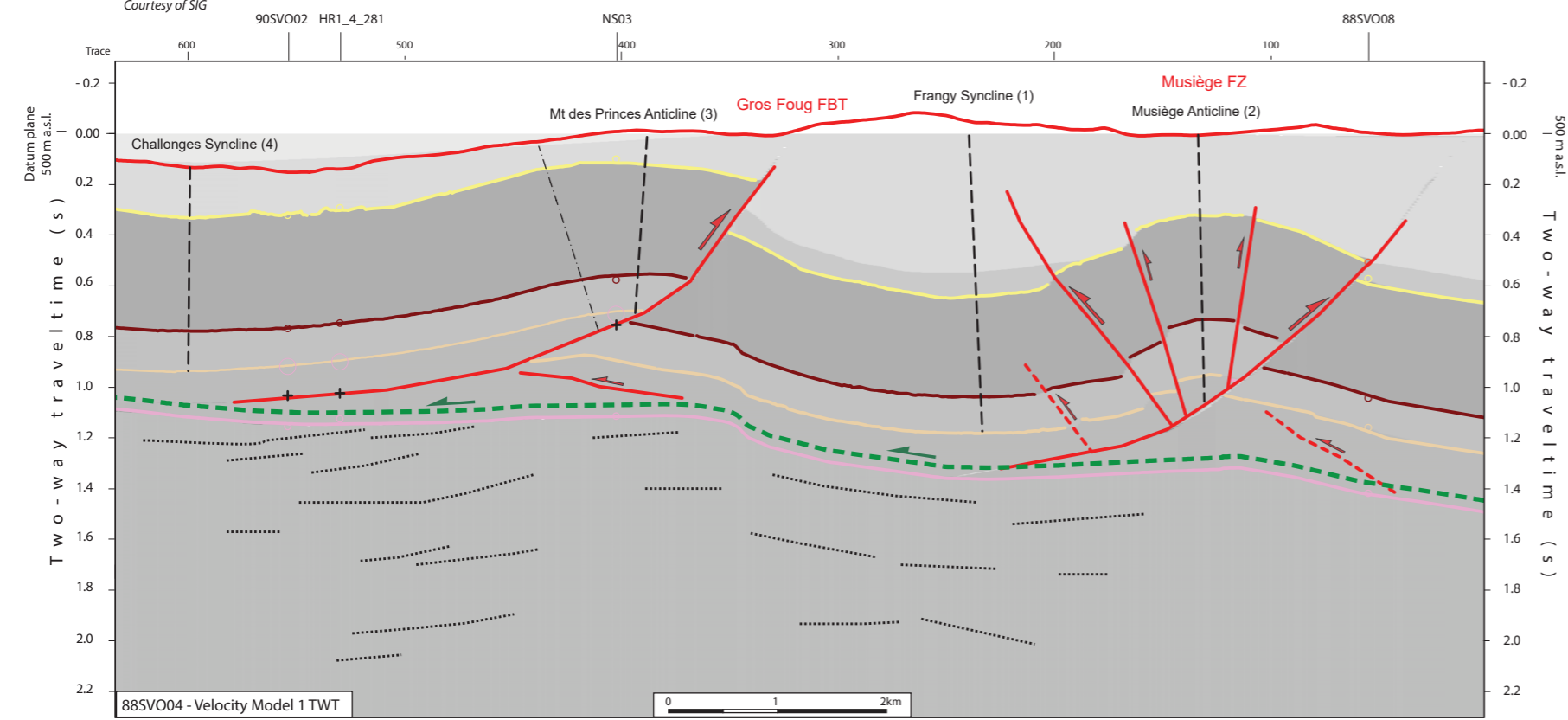
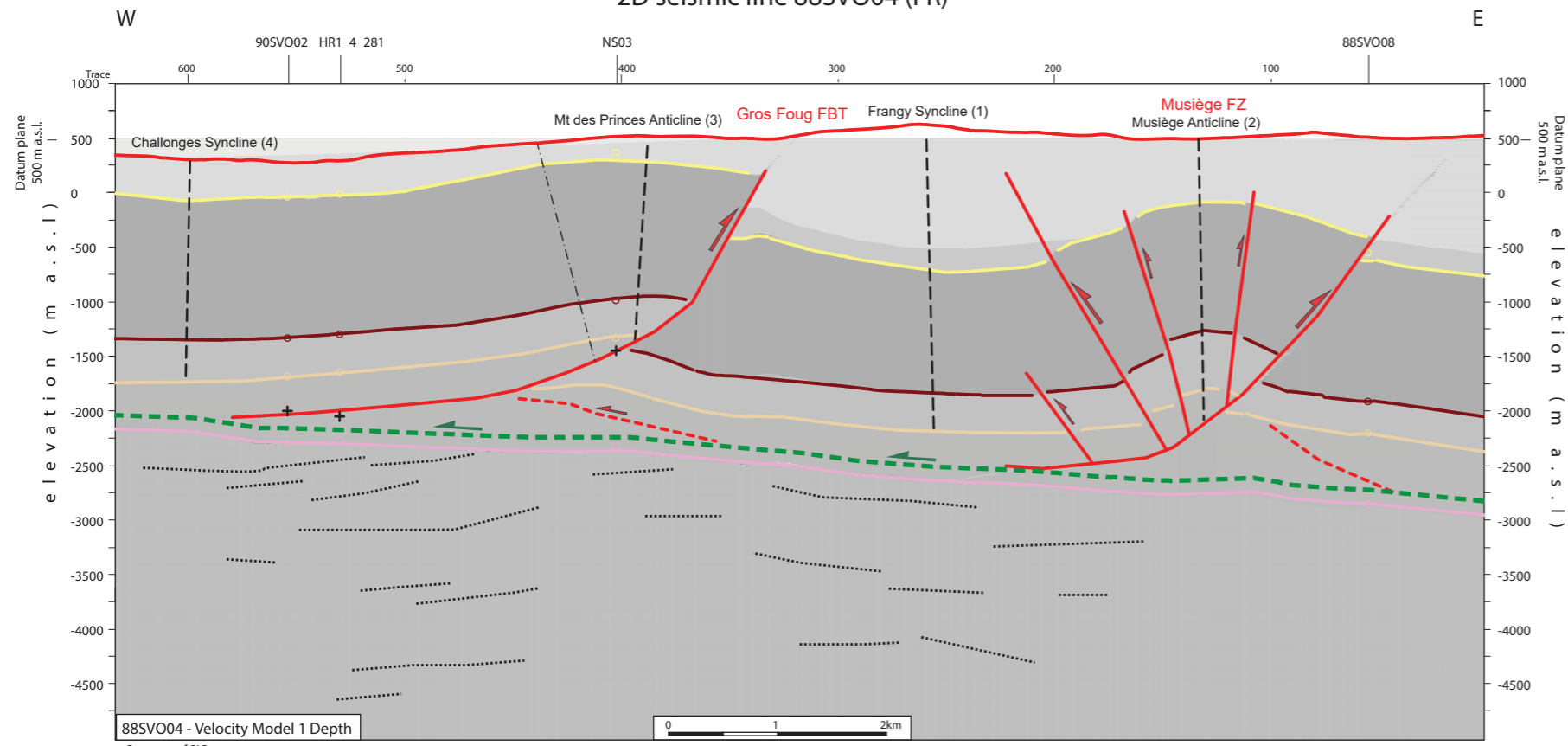


2D seismic line 88SVO04 (FR)



Structural Interpretation

- Correlated fault stick (with intersection cross with other surveys)
- Non-correlated fault stick
- Conceptual fault stick
- Basal décollement zone
- Fault corridor boundary
- Major dip change line
- Fold axial surface

Stratigraphic Interpretation

- Horizon well defined
- Horizon poorly defined / intra Paleozoic reflections / near Base Quaternary model (GESDEC)
- Horizons TWT at line intersections
- Projected perpendicular to the seismic line

Well abbreviation (Map and section)

Musiège-1 MG-1

Other abbreviations

- | | |
|-------|--------------------|
| Trace | Seismic trace |
| FZ | Fault zone |
| FC | Fault corridor |
| TWT | Two way traveltime |
| proj. | Projected |
| s | Seconds |
| nT | near Top |
| nB | near Base |
| Q | Quaternary |
| Cen | Cenozoic |
| UMa | Upper Malm |
| LMa | Lower Malm |
| Do | Dogger |
| Li | Lias |
| Keu | Keuper |
| Mus | Muschelkalk |
| Mes | Mesozoic |
| InPal | Intra Paleozoic |

Interval Velocities of Model 1 Rumilly Basin area

- 3000 m/s Replacement Vint
- 3660 m/s Upper Cenozoic
- 4482 m/s Lower Cenozoic
- 5721 m/s Cretaceous + Malm
- 4851 m/s Dogger+ Lias
- 5172 m/s Triassic
- 5000 m/s Paleozoic

Folds in detached Mesozoic and Cenozoic sedimentary cover

- Anticline visible on surface and on seismic data (blue -> only in Cenozoic cover)
- Syncline visible on surface and on seismic data (blue -> only in Cenozoic cover)
- Anticline visible only on seismic data (blue -> only in Cenozoic cover)
- Syncline visible only seismic data (blue -> only in Cenozoic cover)

Main Faults at nBCen (near Base Cenozoic)

- Reverse fault
- Strike-slip fault
- Normal fault
- Fault corridor

Other features

- Seismic lines with trace numbers
- Interpreted seismic lines (left)
- Geomorphologic lineaments
- Wells
- Frontier CH-FR

Fold Names

- 1 Frangy Syncline
- 2 Musiège Anticline
- 3 Mt des Princes Anticline
- 4 Challenges Syncline
- 17 Marlioz Syncline
- 21 Minzier Anticline

Areas

- Molasse Basin (Quaternary or Molasse outcrops)
- Mesozoic outcrops
- Cretaceous outcrops at the boundary between the Molasse Basin and the Jura fold and Thrust Belt

Legend

- Tectonic domains: Molasse Basin, Subalpine Molasse, Internal Jura*, Lower External Jura, Penninic nappes, Ultrahelvetic nappes
- Other features: Border, Seismic Lines, Thrust, Alpine Thrust

