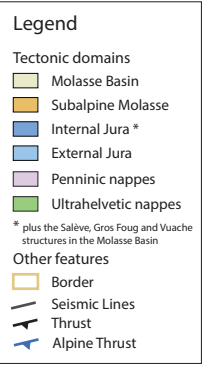
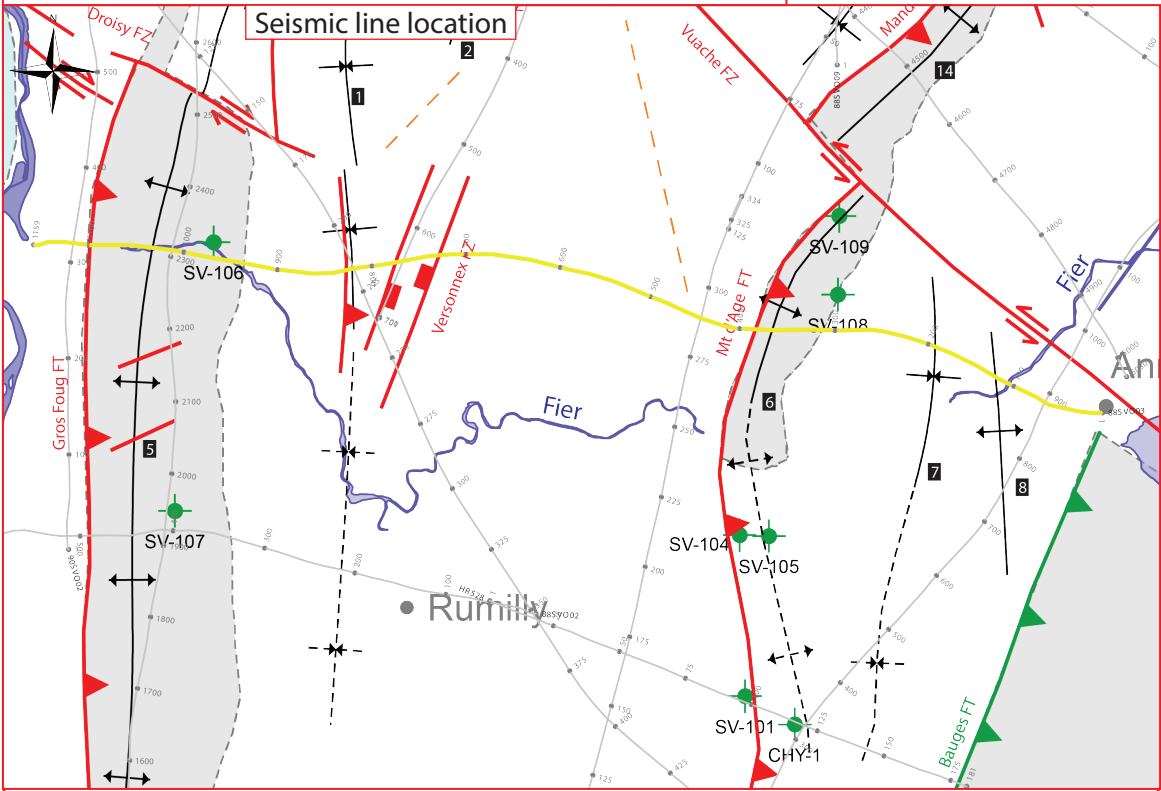
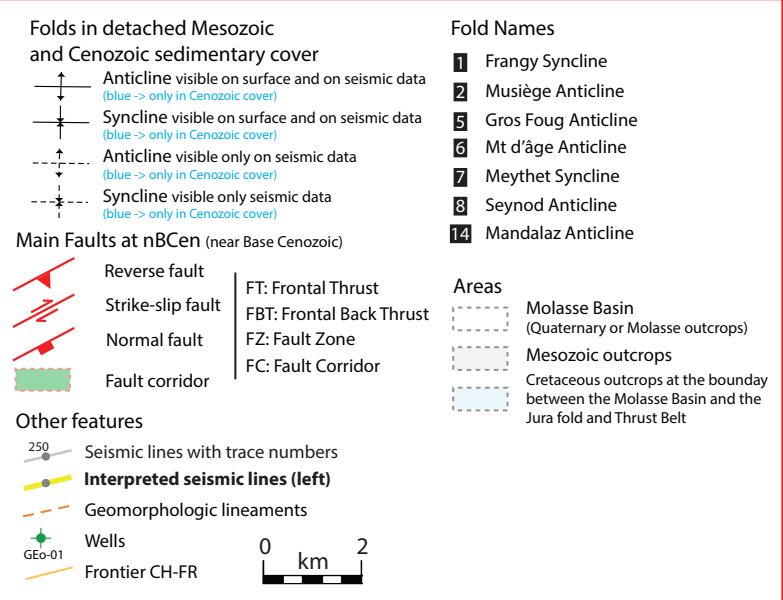






2D seismic line 88SVO03 (FR)



Coordinate system: CH1903+ / LV95


Structural Interpretation

-  Displacement vector pointing towards the observer
-  Displacement vector pointing away from the observer
-  Displacement vector during Cenozoic
-  Displacement vector during Jurassic

Stratigraphic Interpretation

- Well abbreviation
(Map and section)

Seismic facies (SF)
(see chap 4.2.)



 Unit.SFx
(seismic facies name)

→ Geometrical bedform and termination pattern

Other abbreviations

Trace	Seismic trace
FZ	Fault zone
FC	Fault corridor
TWT	Two way traveltime
proj.	Projected
s	Seconds
nT	near Top
nB	near Base
Q	Quaternary
Cen	Cenozoic
UMa	Upper Malm
LMa	Lower Malm
Do	Dogger
Li	Lias
Keu	Keuper
Mus	Muschelkalk
Mes	Mesozoic
InPal	Intra Paleozoic

Well stratigraphy

-  Cenozoic & Quaternary
-  Lower Cenozoic (Eocene?)
-  Cretaceous
-  Upper Malm
-  Lower Malm (Oxfordien)
-  Dogger
-  Liassic
-  Keuper
-  Muschelkalk
-  Paleozoic