

Structural Interpretation

- Correlated fault stick (with intersection cross with other surveys)
- Non-correlated fault stick
- Conceptual fault stick
- Basal décollement zone
- Fault corridor boundary
- Major dip change line
- Fold axial surface

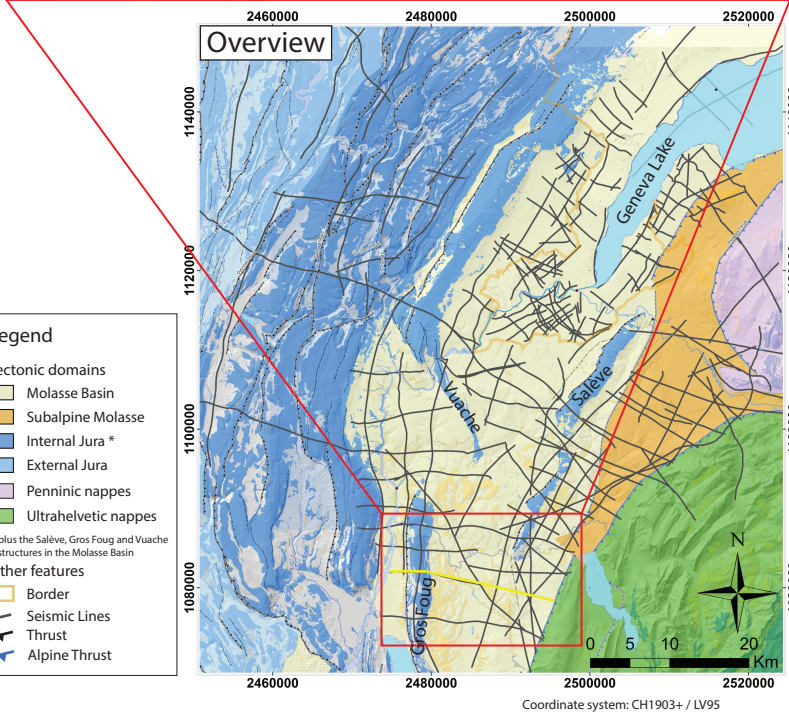
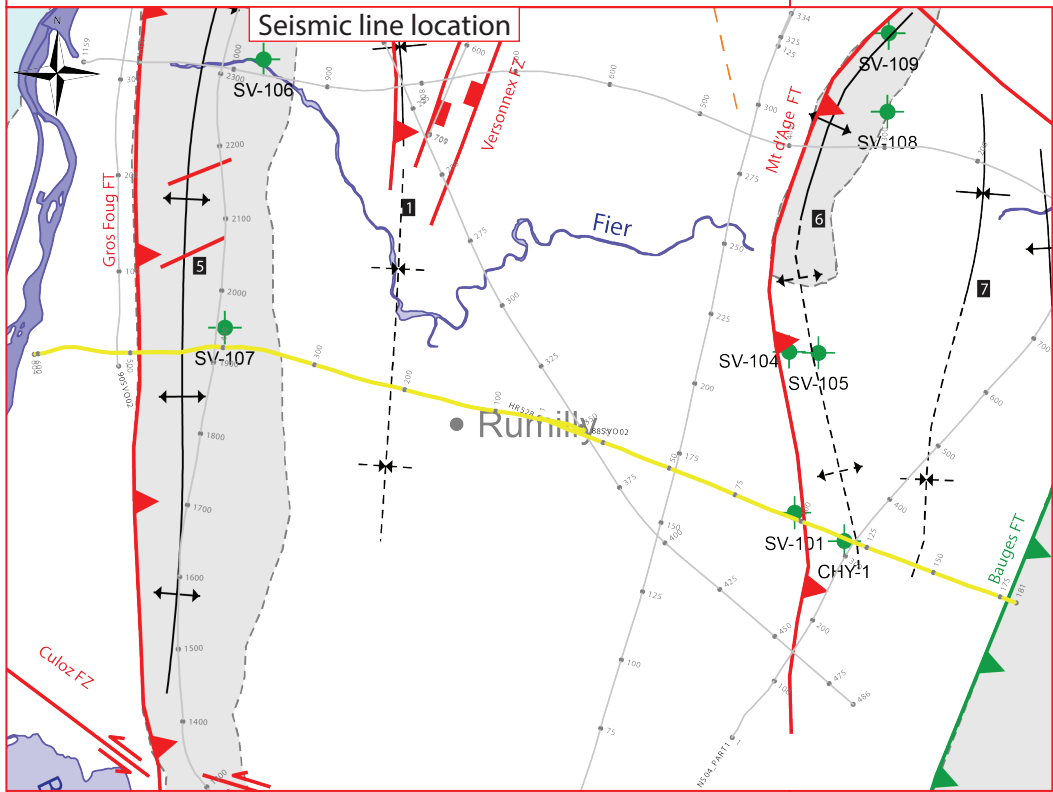
- Displacement vector pointing towards the observer
- Displacement vector pointing away from the observer
- Displacement vector during Cenozoic
- Displacement vector during Jurassic
- Horizon well defined
- Horizon poorly defined / intra Paleozoic reflections / near Base Quaternary model (GESDEC)
- Horizons TWT at line intersections
- Projected perpendicular to the seismic line

- Well abbreviation (Map and section)
- | | |
|------------|--------|
| Chapery-1 | CHY-1 |
| Savoie-101 | SV-101 |
| Savoie-104 | SV-104 |
| Savoie-105 | SV-105 |
| Savoie-106 | SV-106 |
| Savoie-107 | SV-107 |
| Savoie-108 | SV-108 |
| Savoie-109 | SV-109 |
- Seismic facies (SF) (see chap 4.2.)
- | |
|---|
| Unit.SFx (seismic facies name) |
| Geometrical bedform and termination pattern |

- Other abbreviations
- | | |
|-------|---------------------|
| Trace | Seismic trace |
| FZ | Fault zone |
| FC | Fault corridor |
| TWT | Two way travelttime |
| proj. | Projected |
| s | Seconds |
| nT | near Top |
| nB | near Base |
| Q | Quaternary |
| Cen | Cenozoic |
| UMa | Upper Malm |
| LMa | Lower Malm |
| Do | Dogger |
| Li | Lias |
| Keu | Keuper |
| Mus | Muschelkalk |
| Mes | Mesozoic |
| InPal | Intra Paleozoic |

- Well stratigraphy
- | |
|--------------------------|
| Cenozoic & Quaternary |
| Lower Cenozoic (Eocene?) |
| Cretaceous |
| Upper Malm |
| Lower Malm (Oxfordien) |
| Dogger |
| Liassic |
| Keuper |
| Muschelkalk |
| Paleozoic |

- Folds in detached Mesozoic and Cenozoic sedimentary cover
- Anticline visible on surface and on seismic data (blue -> only in Cenozoic cover)
 - Syncline visible on surface and on seismic data (blue -> only in Cenozoic cover)
 - Anticline visible only on seismic data (blue -> only in Cenozoic cover)
 - Syncline visible only seismic data (blue -> only in Cenozoic cover)
- Main Faults at nBCen (near Base Cenozoic)
- Reverse fault
 - Strike-slip fault
 - Normal fault
 - Fault corridor
- Other features
- Seismic lines with trace numbers
 - Interpreted seismic lines (left)
 - Geomorphologic lineaments
 - Wells
 - Frontier CH-FR
- Fold Names
- Frangy Syncline
 - Gros Foug Anticline
 - Mt d'âge Anticline
 - Meythet Syncline
- Areas
- Molasse Basin (Quaternary or Molasse outcrops)
 - Mesozoic outcrops
 - Cretaceous outcrops at the boundary between the Molasse Basin and the Jura fold and Thrust Belt



- Legend
- Tectonic domains
- Molasse Basin
 - Subalpine Molasse
 - Internal Jura *
 - External Jura
 - Penninic nappes
 - Ultrahelvetic nappes
- * plus the Salève, Gros Foug and Vuache structures in the Molasse Basin
- Other features
- Border
 - Seismic Lines
 - Thrust
 - Alpine Thrust