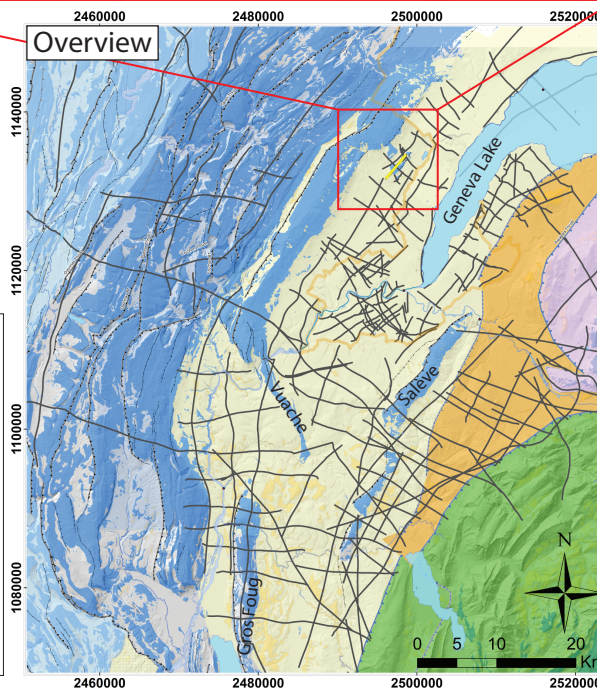
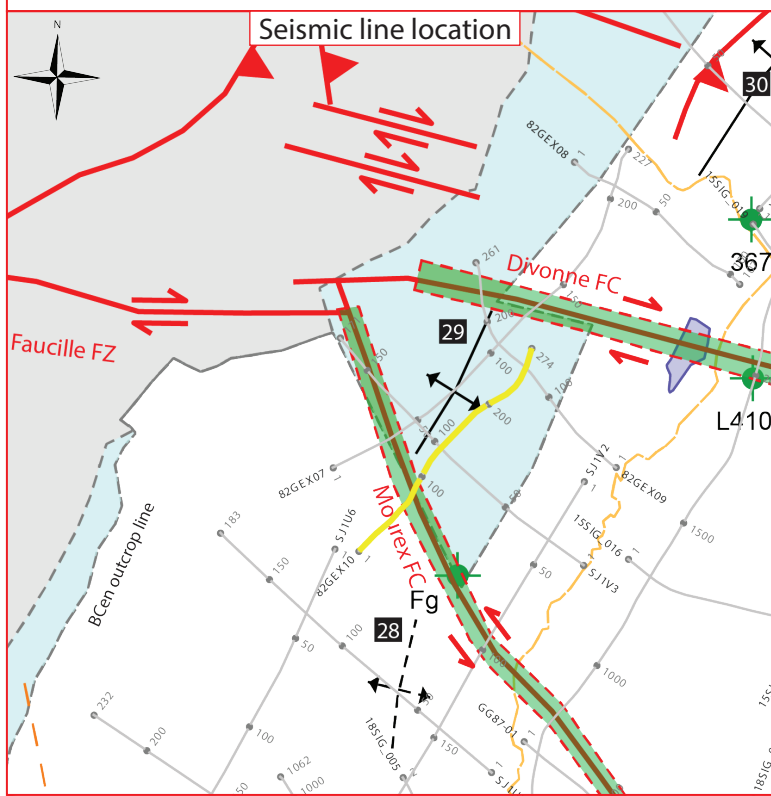
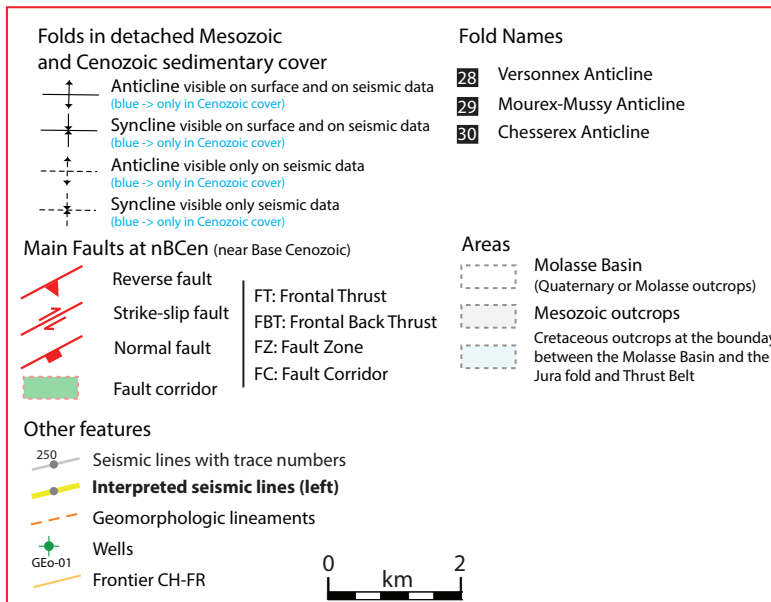
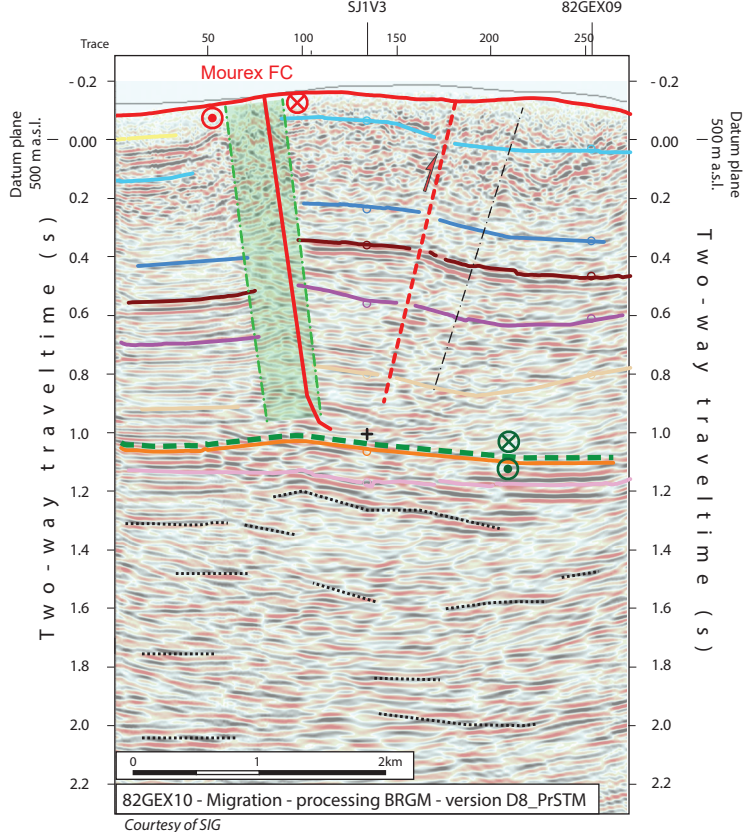
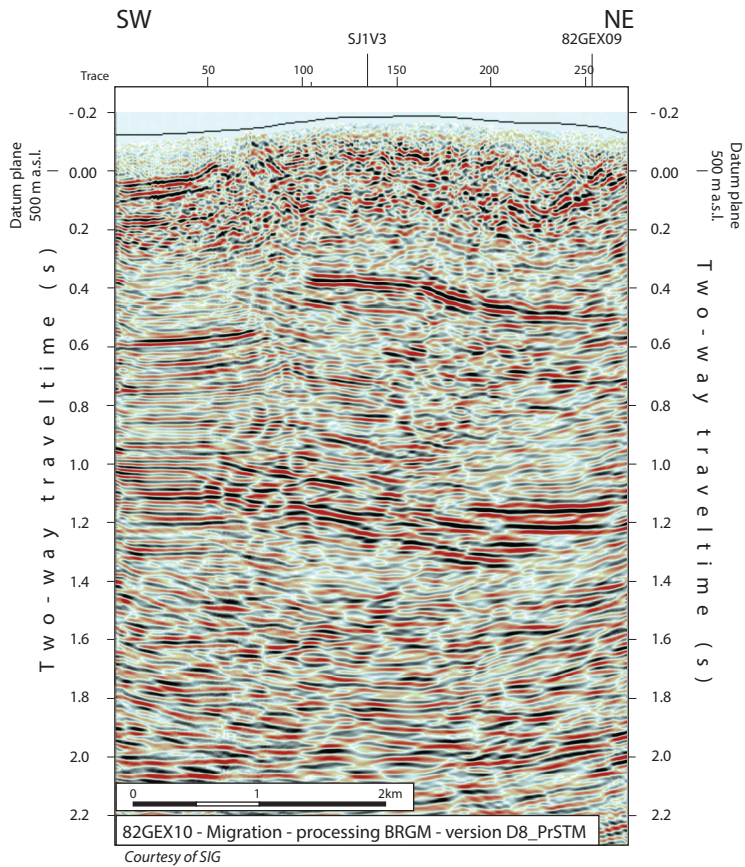


2D seismic line 82GEX10 (FR)



Structural Interpretation

- Correlated fault stick (with intersection cross with other surveys)
- Non-correlated fault stick
- Conceptual fault stick
- Basal décollement zone
- Fault corridor boundary
- Major dip change line
- Fold axial surface

- Displacement vector pointing towards the observer
- Displacement vector pointing away from the observer
- Displacement vector during Cenozoic
- Displacement vector during Jurassic
- Horizon well defined
- Horizon poorly defined / intra Paleozoic reflections / near Base Quaternary model (GESDEC)
- Horizons TWT at line intersections
- Well
- Projected perpendicular to the seismic line

Well abbreviation (Map and section)

Bogis-Bossey	L410E
Crassier	367
Grilly	Fg

Other abbreviations

Trace	Seismic trace
FZ	Fault zone
FC	Fault corridor
TWT	Two way traveltime
proj.	Projected
s	Seconds
nT	near Top
nB	near Base
Q	Quaternary
Cen	Cenozoic
UMa	Upper Malm
LMa	Lower Malm
Do	Dogger
Li	Lias
Keu	Keuper
Mus	Muschelkalk
Mes	Mesozoic
InPal	Intra Paleozoic

Legend

- Tectonic domains
- Molasse Basin
- Subalpine Molasse
- Internal Jura *
- External Jura
- Penninic nappes
- Ultrahelvetic nappes
- * plus the Salève, Gros Foug and Vuache structures in the Molasse Basin
- Border
- Seismic Lines
- Thrust
- Alpine Thrust