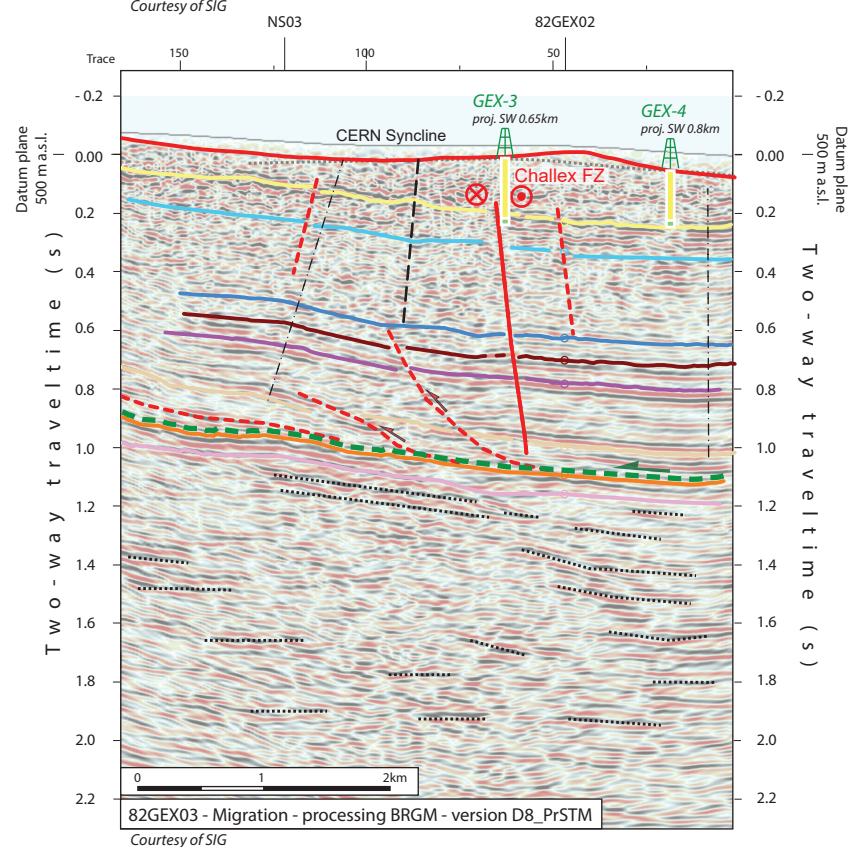
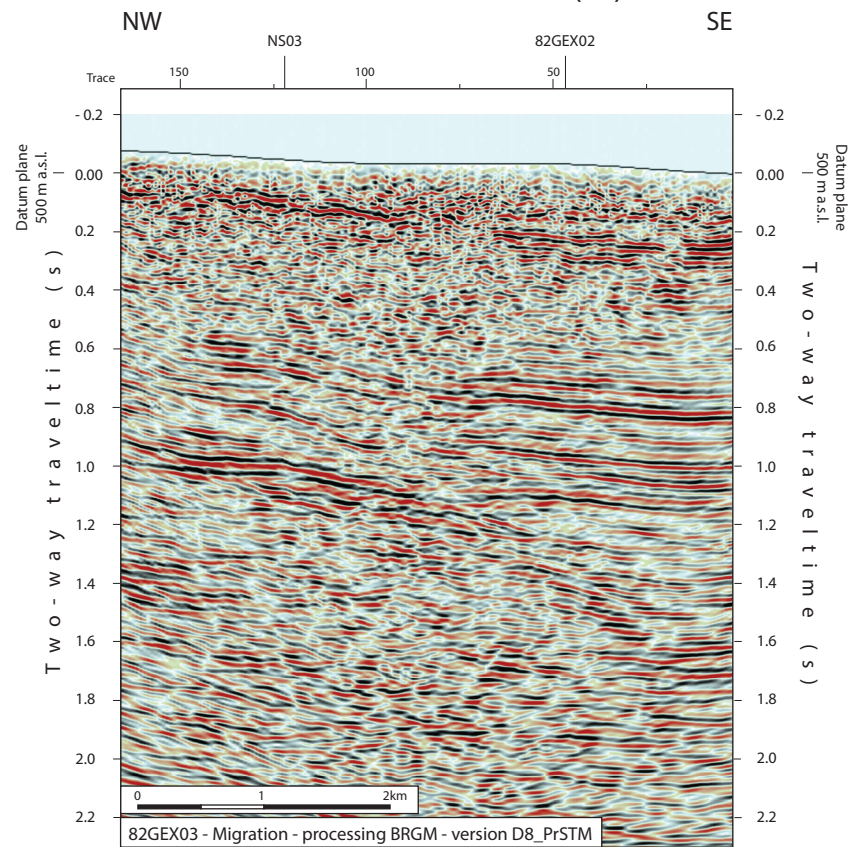


### 2D seismic line 82GEX03 (FR)



#### Structural Interpretation

- Correlated fault stick (with intersection cross with other surveys)
- Non-correlated fault stick
- Conceptual fault stick
- Basal décollement zone
- Fault corridor boundary
- Major dip change line
- Fold axial surface

- Displacement vector pointing towards the observer
  - Displacement vector pointing away from the observer
  - Displacement vector during Cenozoic
  - Displacement vector during Jurassic
- #### Stratigraphic Interpretation
- Horizon well defined
  - Horizon poorly defined / intra Paleozoic reflections / near Base Quaternary model (GESDEC)
  - Horizons TWT at line intersections
  - Projected perpendicular to the seismic line

#### Well abbreviation (Map and section)

GEO-01	GEO-01
Gex CD-03	GEX-3
Gex CD-04	GEX-4
Gex CD-05	GEX-5
Gex CD-06	GEX-6

#### Well stratigraphy

	Cenozoic & Quaternary
	Cretaceous

#### Other abbreviations

Trace	Seismic trace
FZ	Fault zone
FC	Fault corridor
TWT	Two way traveltime
proj.	Projected
s	Seconds
nT	near Top
nB	near Base
Q	Quaternary
Cen	Cenozoic
UMa	Upper Malm
LMa	Lower Malm
Do	Dogger
Li	Lias
Keu	Keuper
Mus	Muschelkalk
Mes	Mesozoic
InPal	Intra Paleozoic

#### Folds in detached Mesozoic and Cenozoic sedimentary cover

- Anticline visible on surface and on seismic data (blue -> only in Cenozoic cover)
- Syncline visible on surface and on seismic data (blue -> only in Cenozoic cover)
- Anticline visible only on seismic data (blue -> only in Cenozoic cover)
- Syncline visible only on seismic data (blue -> only in Cenozoic cover)

#### Main Faults at nBCen (near Base Cenozoic)

- Reverse fault
- Strike-slip fault
- Normal fault
- Fault corridor

#### Other features

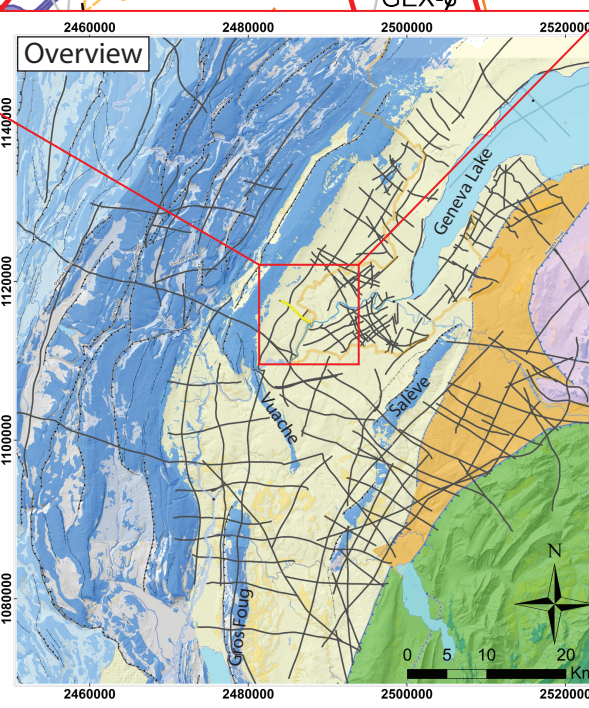
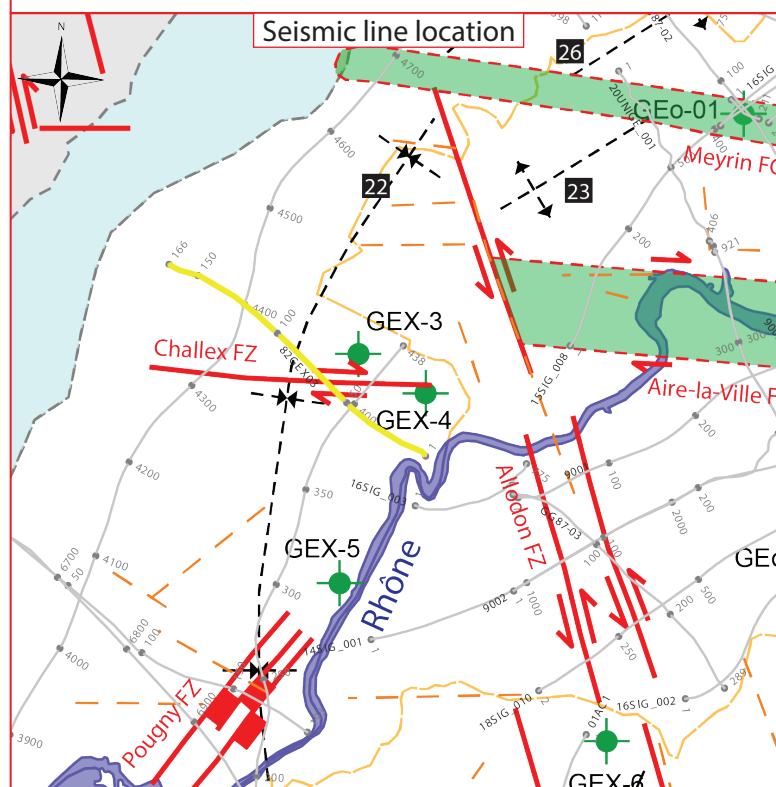
- Seismic lines with trace numbers
- Interpreted seismic lines (left)
- Geomorphologic lineaments
- Wells
- Frontier CH-FR

#### Fold Names

- 22** CERN Syncline
- 23** Chouilly Anticline
- 26** CERN Anticline

#### Areas

- Molasse Basin (Quaternary or Molasse outcrops)
- Mesozoic outcrops
- Cretaceous outcrops at the boundary between the Molasse Basin and the Jura fold and Thrust Belt



#### Legend

**Tectonic domains**

- Molasse Basin
- Subalpine Molasse
- Internal Jura \*
- External Jura
- Penninic nappes
- Ultrahelvetic nappes

\* plus the Salève, Gros Foug and Vuache structures in the Molasse Basin

**Other features**

- Border
- Seismic Lines
- Thrust
- Alpine Thrust