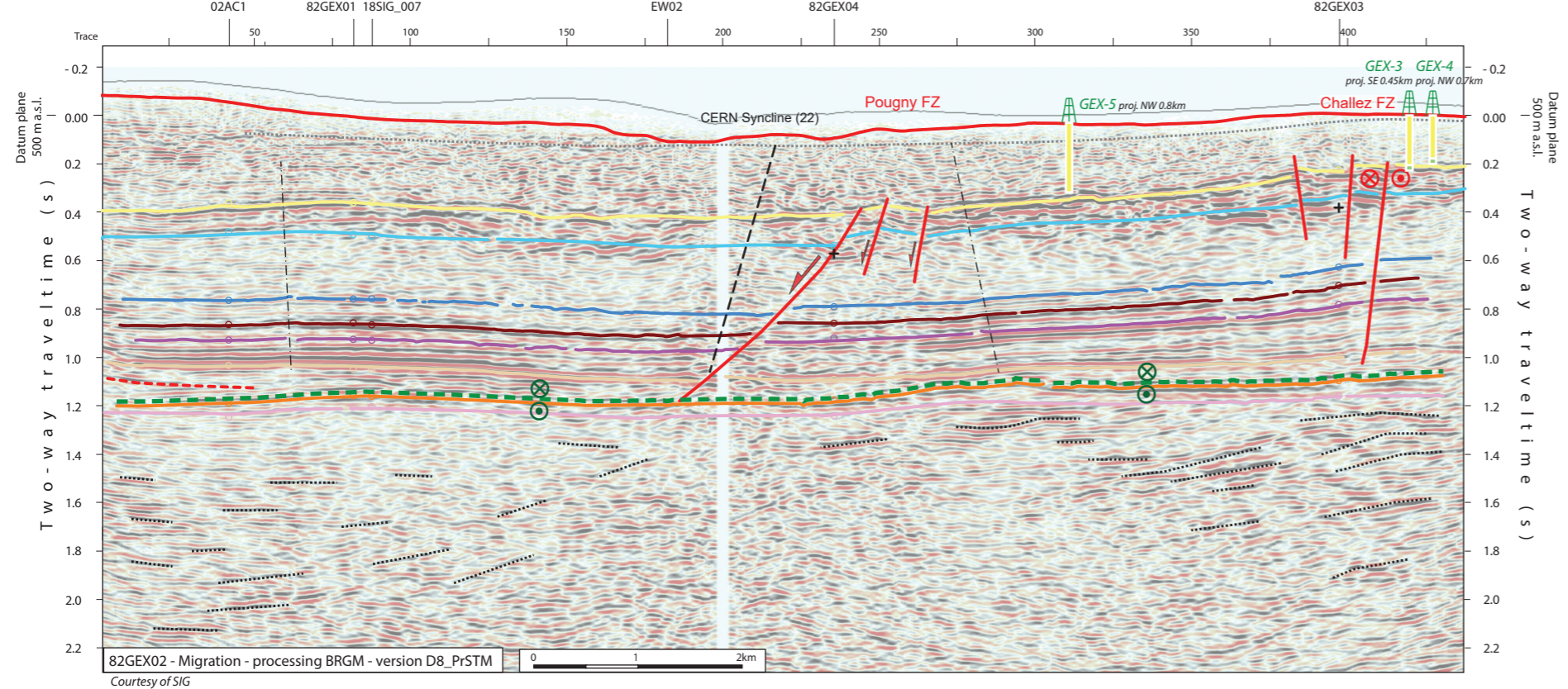
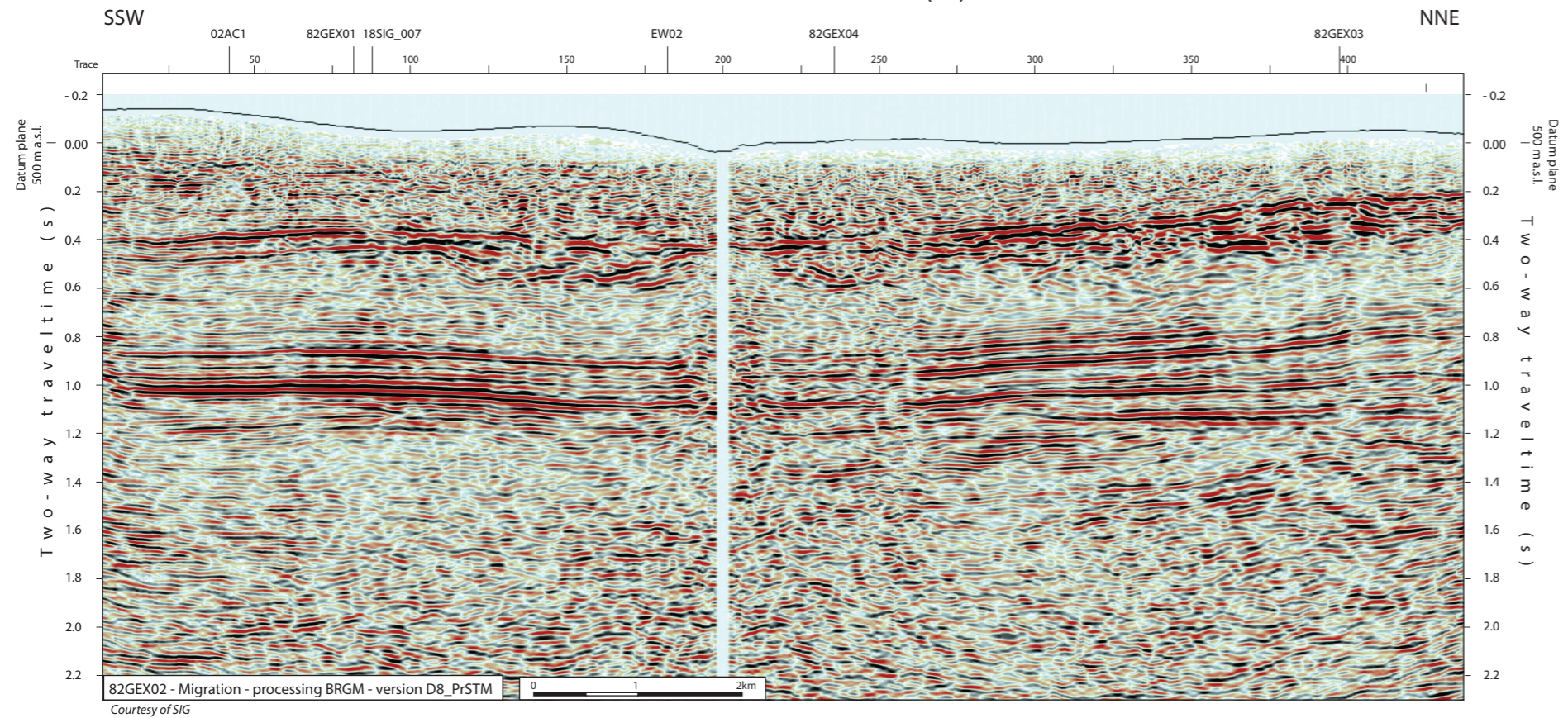


2D seismic line 82GEX02 (FR)



Structural Interpretation

- Correlated fault stick (with intersection cross with other surveys)
- Non-correlated fault stick
- Conceptual fault stick
- Basal décollement zone
- Fault corridor boundary
- Major dip change line
- Fold axial surface

Stratigraphic Interpretation

- Displacement vector pointing towards the observer
- Displacement vector pointing away from the observer
- Displacement vector during Cenozoic
- Displacement vector during Jurassic
- Horizon well defined
- Horizon poorly defined / intra Paleozoic reflections / near Base Quaternary model (GESDEC)
- Horizons TWT at line intersections
- Well
- Projected perpendicular to the seismic line

Well abbreviation (Map and section)

- | | |
|-----------|--------|
| GEO-02 | GEO-02 |
| Gex CD-04 | GEX-4 |
| Gex CD-05 | GEX-5 |
| Gex CD-06 | GEX-6 |
| Humilly-1 | HU-1 |

Well stratigraphy

- | | |
|--|-----------------------|
| | Cenozoic & Quaternary |
| | Cretaceous |

Other abbreviations

- | | |
|-------|--------------------|
| Trace | Seismic trace |
| FZ | Fault zone |
| FC | Fault corridor |
| TWT | Two way traveltime |
| proj. | Projected |
| s | Seconds |
| nT | near Top |
| nB | near Base |
| Q | Quaternary |
| Cen | Cenozoic |
| UMa | Upper Malm |
| LMa | Lower Malm |
| Do | Dogger |
| Li | Lias |
| Keu | Keuper |
| Mus | Muschelkalk |
| Mes | Mesozoic |
| InPal | Intra Paleozoic |

Folds in detached Mesozoic and Cenozoic sedimentary cover

- Anticline visible on surface and on seismic data (blue -> only in Cenozoic cover)
- Syncline visible on surface and on seismic data (blue -> only in Cenozoic cover)
- Anticline visible only on seismic data (blue -> only in Cenozoic cover)
- Syncline visible only on seismic data (blue -> only in Cenozoic cover)

Fold Names

	18 Humilly Anticline
	19 Cortenges Syncline
	22 CERN Syncline

Areas

- Molasse Basin (Quaternary or Molasse outcrops)
- Mesozoic outcrops
- Cretaceous outcrops at the boundary between the Molasse Basin and the Jura fold and Thrust Belt

Main Faults at nBCen (near Base Cenozoic)

- Reverse fault
- Strike-slip fault
- Normal fault
- Fault corridor

Other features

- Seismic lines with trace numbers
- Interpreted seismic lines (left)
- Geomorphologic lineaments
- Wells
- Frontier CH-FR

Legend

- Topo
- nBQ
- nBCen
- nTUMa
- nTLMa
- nTDo
- nTLi
- nTKeu
- nTMus
- nBMes
- InPal

