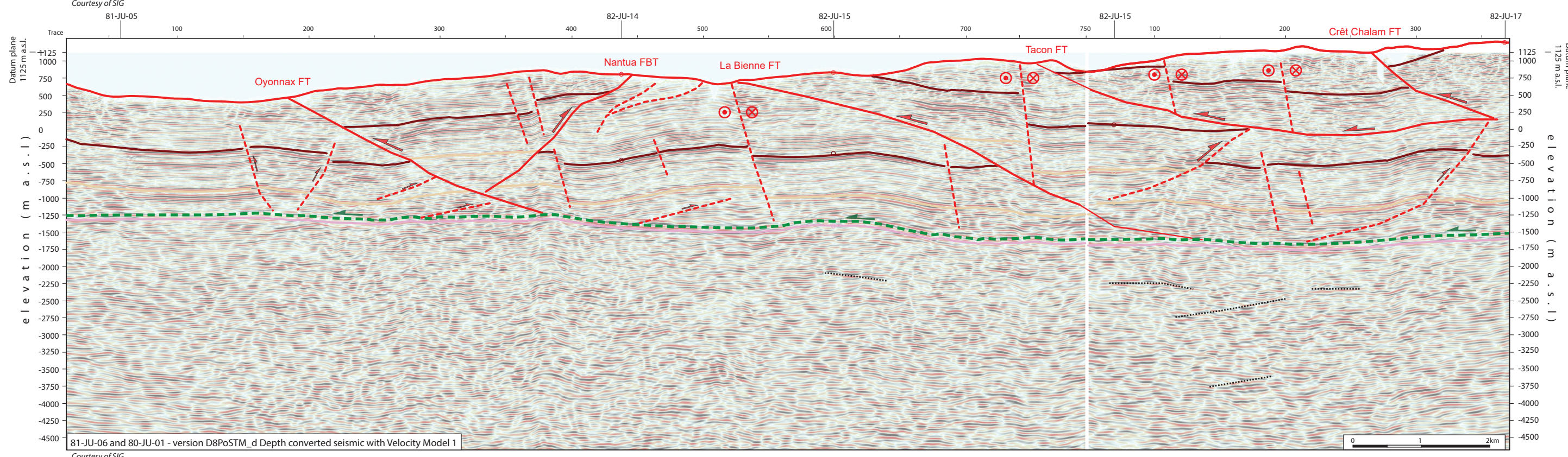
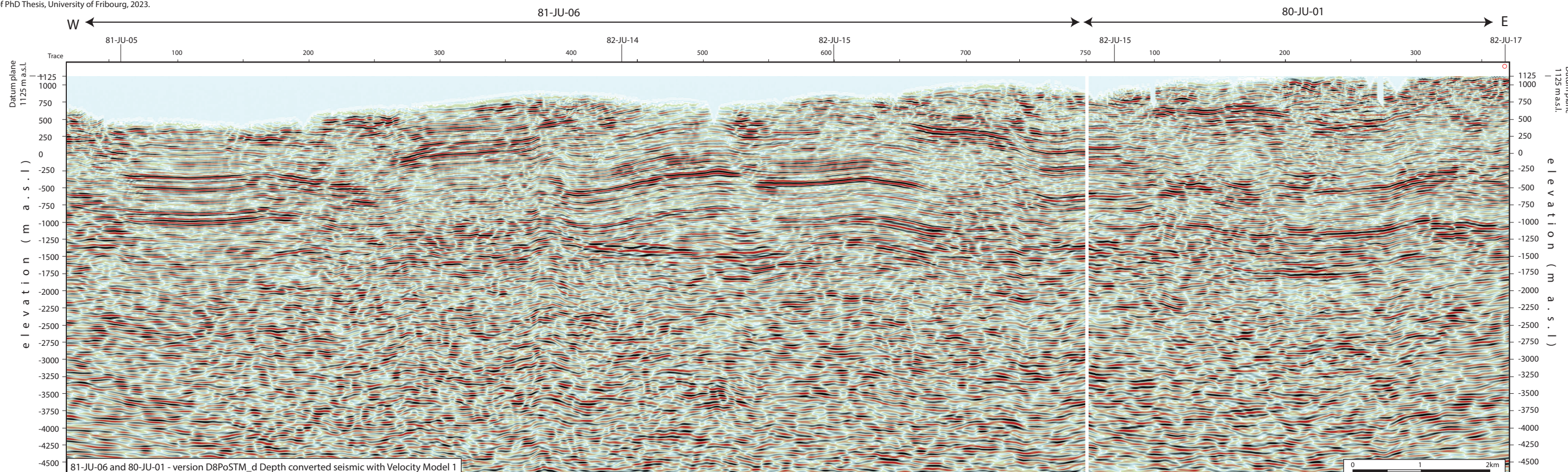


2D seismic line 81-JU-06 and 80-JU-01 (FR)



Folds in detached Mesozoic and Cenozoic sedimentary cover

- Anticline visible on surface and on seismic data (blue -> only in Cenozoic cover)
- Syncline visible on surface and on seismic data (blue -> only in Cenozoic cover)
- Anticline visible only on seismic data (blue -> only in Cenozoic cover)
- Syncline visible only seismic data (blue -> only in Cenozoic cover)

Main Faults at nBCen (near Base Cenozoic)

- Reverse fault
- Strike-slip fault
- Normal fault
- Fault corridor

Other features

- Seismic lines with trace numbers
- Interpreted seismic lines (left)
- Geomorphologic lineaments
- Wells
- Frontier CH-FR

Fold Names

- 25 Saint-Genis Syncline
- 26 CERN Anticline

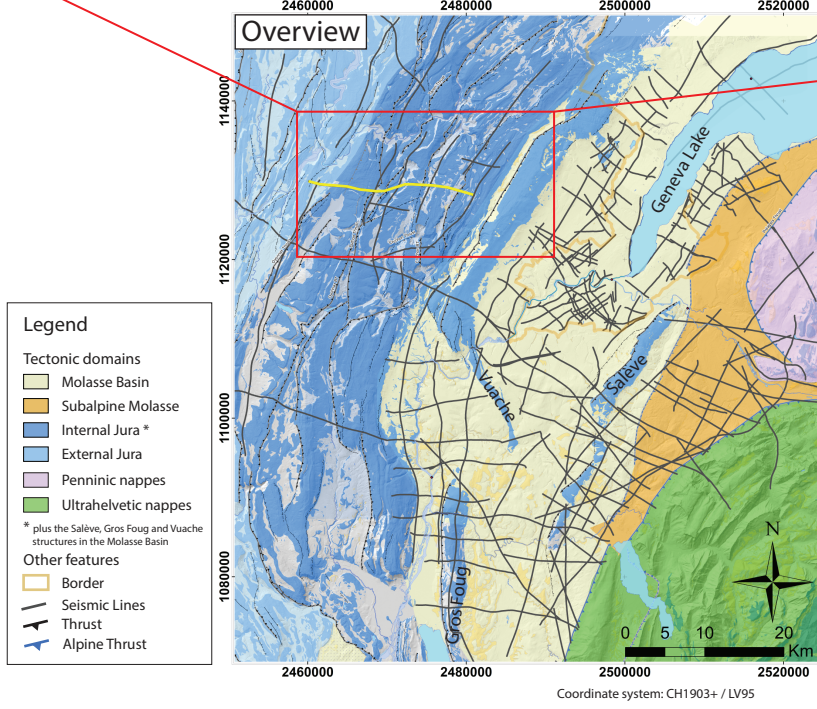
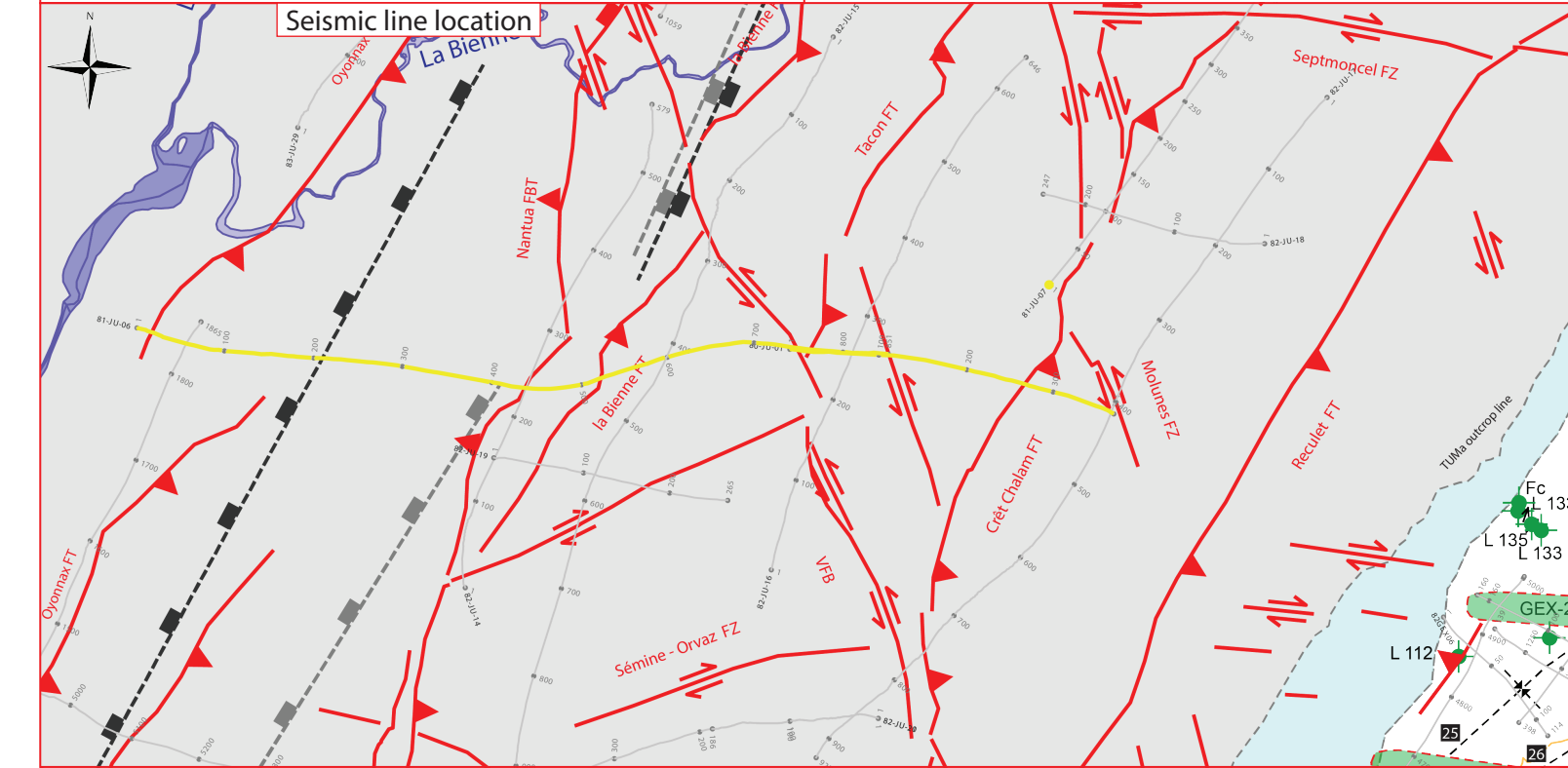
Areas

- Molasse Basin (Quaternary or Molasse outcrops)
- Mesozoic outcrops
- Cretaceous outcrops at the boundary between the Molasse Basin and the Jura fold and Thrust Belt

Legend for Faults:

- FT: Frontal Thrust
- FBT: Frontal Back Thrust
- FZ: Fault Zone
- FC: Fault Corridor

Scale: 0 km 2



Structural Interpretation

- Correlated fault stick (with intersection cross with other surveys)
- Non-correlated fault stick
- Conceptual fault stick
- Basal décollement zone
- Fault corridor boundary
- Major dip change line
- Fold axial surface

Stratigraphic Interpretation

- Horizon well defined
- Horizon poorly defined / intra Paleozoic reflections / near Base Quaternary model (GESDEC)
- Horizons TWT at line intersections
- Projected perpendicular to the seismic line

Well abbreviation (Map and section)

L 112	L 112
L 132	L 133
L 135	L 135
Gex CD-02	GEX-2

Other abbreviations

Trace	Seismic trace
FZ	Fault zone
FC	Fault corridor
TWT	Two way travelltime
proj.	Projected
s	Seconds
nT	near Top
nB	near Base
Q	Quaternary
Cen	Cenozoic
UMa	Upper Malm
LMa	Lower Malm
Do	Dogger
Li	Lias
Keu	Keuper
Mus	Muschelkalk
Mes	Mesozoic
InPal	Intra Paleozoic

Displacement vectors:

- Displacement vector pointing towards the observer
- Displacement vector pointing away from the observer
- Displacement vector during Cenozoic
- Displacement vector during Jurassic