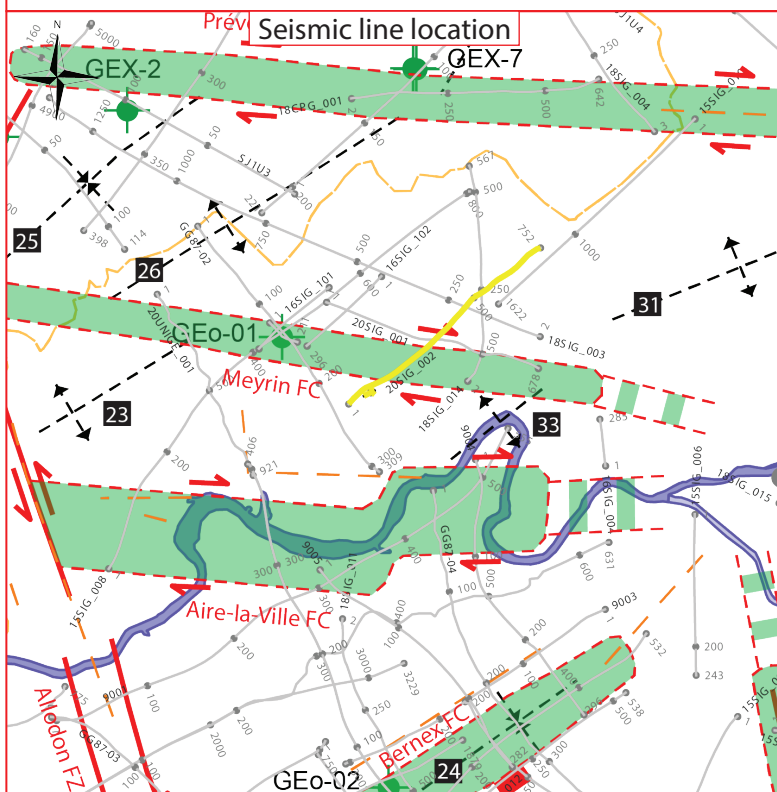
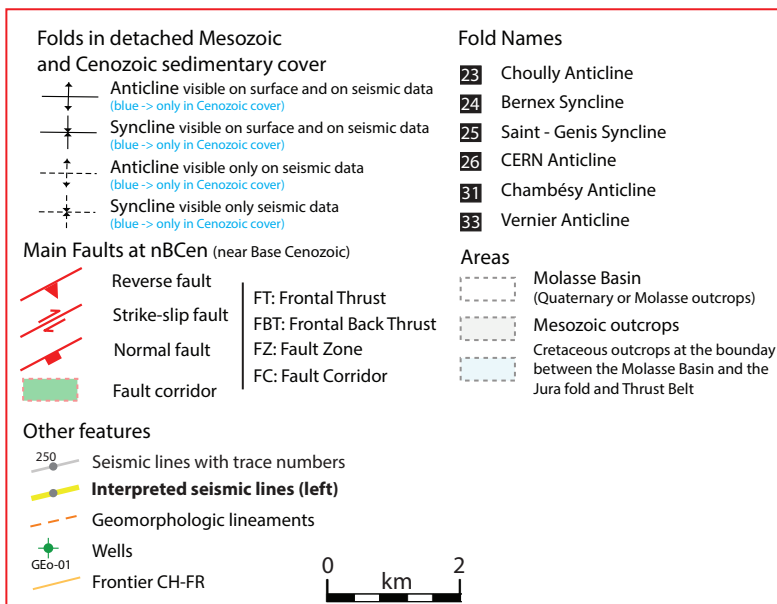
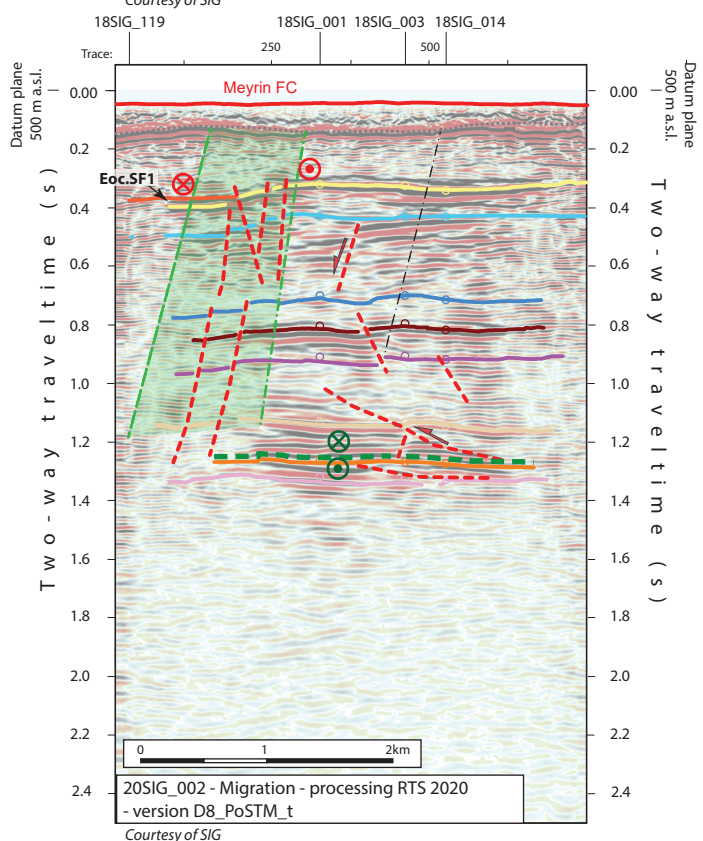
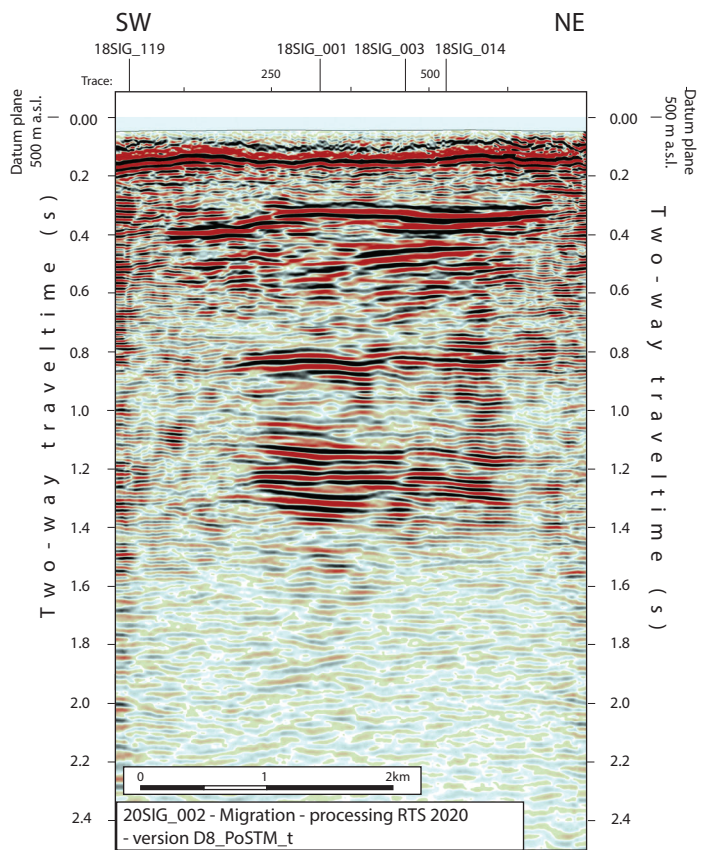


2D seismic line 20SIG_002 (CH)



Structural Interpretation

- Correlated fault stick (with intersection cross with other surveys)
- Non-correlated fault stick
- Conceptual fault stick
- Basal décollement zone
- Fault corridor boundary
- Major dip change line
- Fold axial surface

- Displacement vector pointing towards the observer
- Displacement vector pointing away from the observer
- Displacement vector during Cenozoic
- Displacement vector during Jurassic
- Horizon well defined
- Horizon poorly defined / intra Paleozoic reflections / near Base Quaternary model (GESDEC)
- Horizons TWT at line intersections
- Projected perpendicular to the seismic line

Well abbreviation (Map and section)

- | | |
|-----------|--------|
| GEO-01 | GEO-01 |
| GEO-02 | GEO-02 |
| GEX CD-01 | GEX-1 |
| GEX CD-07 | GEX-7 |

Seismic facies (SF) (see chap 4.2.)

- Unit.SFx (seismic facies name)
- Geometrical bedform and termination pattern

Other abbreviations

- | | |
|-------|---------------------|
| Trace | Seismic trace |
| FZ | Fault zone |
| FC | Fault corridor |
| TWT | Two way travelttime |
| proj. | Projected |
| s | Seconds |
| nT | near Top |
| nB | near Base |
| Q | Quaternary |
| Cen | Cenozoic |
| UMa | Upper Malm |
| LMa | Lower Malm |
| Do | Dogger |
| Li | Lias |
| Keu | Keuper |
| Mus | Muschelkalk |
| Mes | Mesozoic |
| InPal | Intra Paleozoic |

Legend

- Tectonic domains
 - Molasse Basin
 - Subalpine Molasse
 - Internal Jura *
 - External Jura
 - Penninic nappes
 - Ultrahelvetic nappes
- Other features
 - Border
 - Seismic Lines
 - Thrust
 - Alpine Thrust

