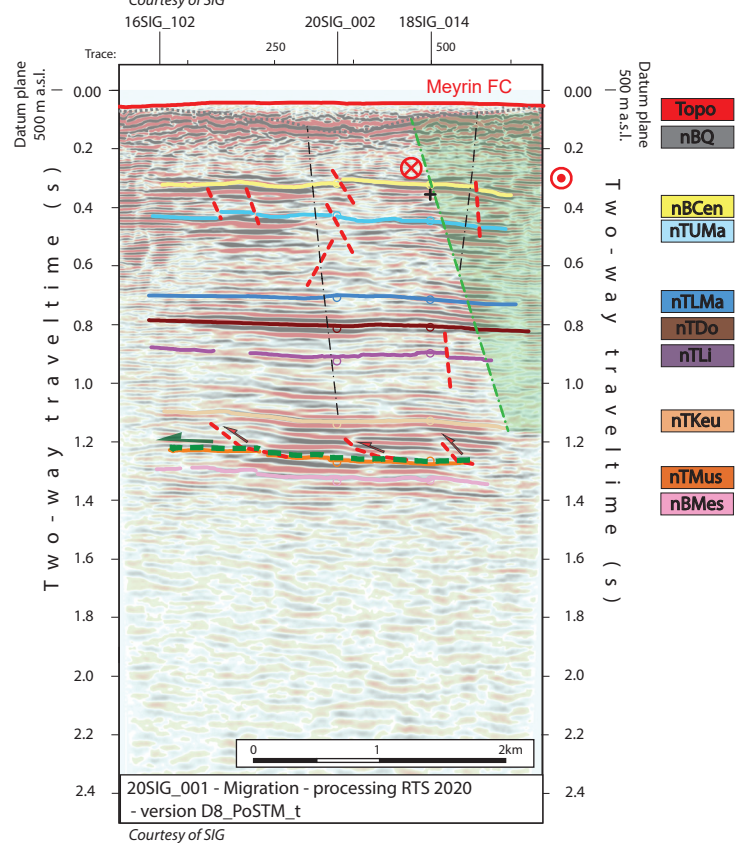
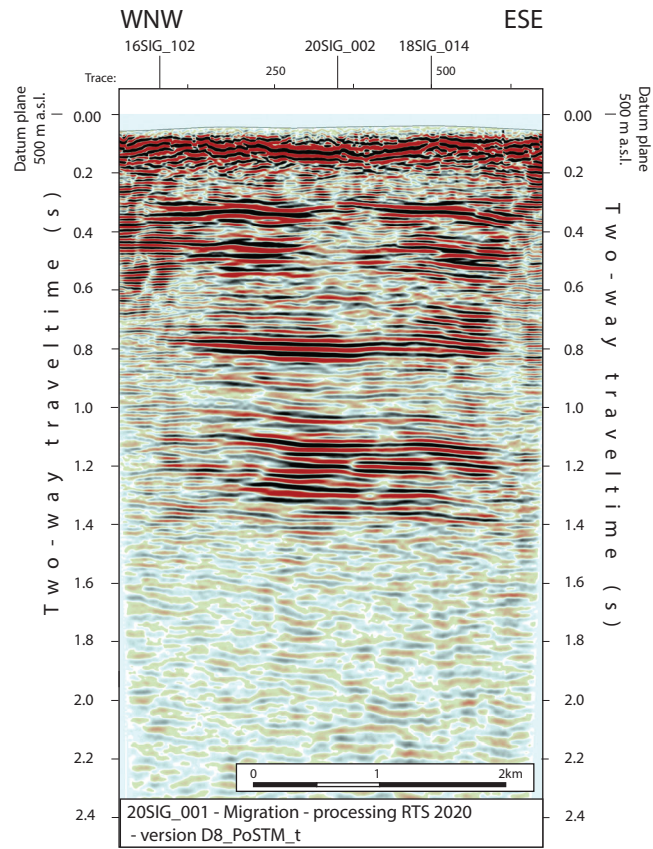


2D seismic line 20SIG_001 (CH)



Folds in detached Mesozoic and Cenozoic sedimentary cover

- Anticline visible on surface and on seismic data (blue -> only in Cenozoic cover)
- Syncline visible on surface and on seismic data (blue -> only in Cenozoic cover)
- Anticline visible only on seismic data (blue -> only in Cenozoic cover)
- Syncline visible only seismic data (blue -> only in Cenozoic cover)

Main Faults at nBCen (near Base Cenozoic)

- Reverse fault
- Strike-slip fault
- Normal fault
- Fault corridor

Other features

- Seismic lines with trace numbers
- Interpreted seismic lines (left)
- Geomorphologic lineaments
- Wells
- Frontier CH-FR

Fold Names

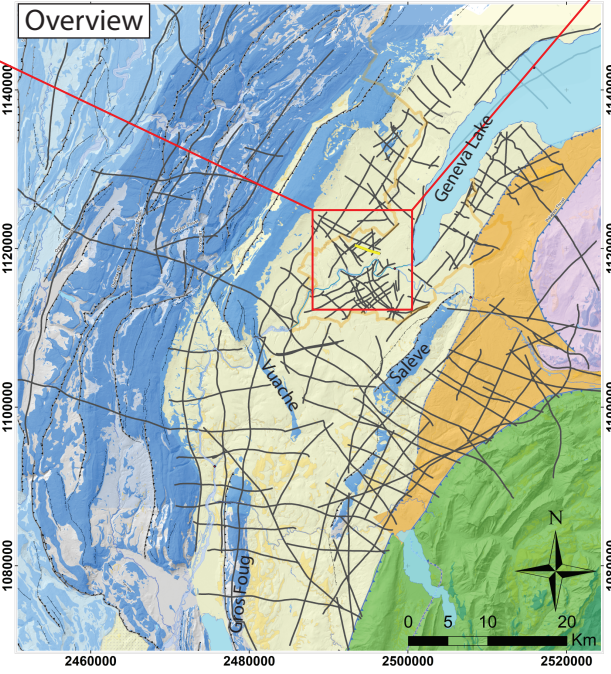
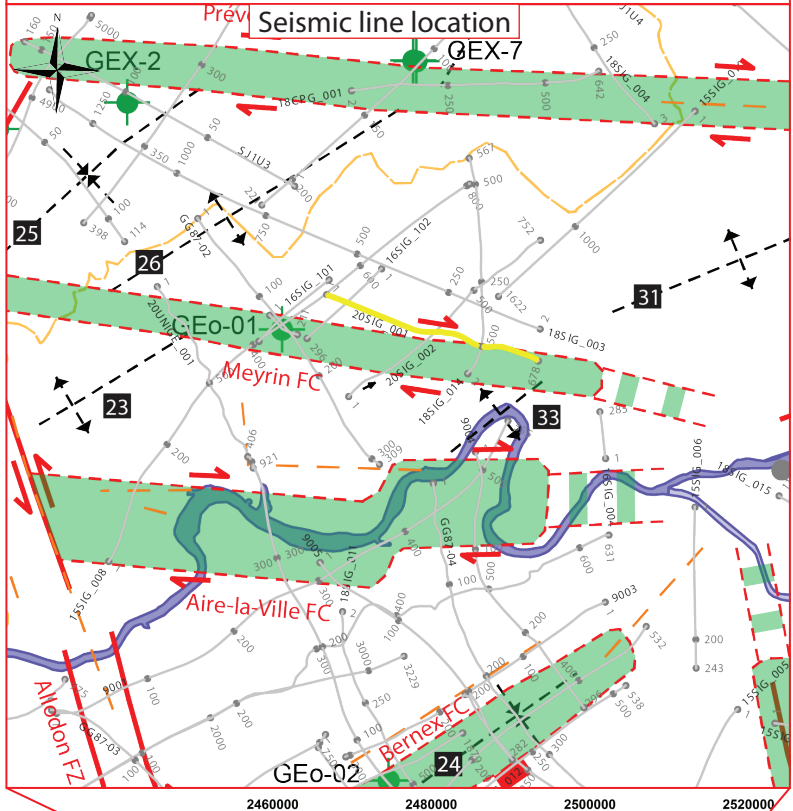
- 23 Chouilly Anticline
- 24 Bernex Syncline
- 25 Saint - Genis Syncline
- 26 CERN Anticline
- 31 Chambésy Anticline
- 33 Vernier Anticline

Areas

- Molasse Basin (Quaternary or Molasse outcrops)
- Mesozoic outcrops
- Cretaceous outcrops at the boundary between the Molasse Basin and the Jura fold and Thrust Belt

Legend

- FT: Frontal Thrust
- FBT: Frontal Back Thrust
- FZ: Fault Zone
- FC: Fault Corridor



Structural Interpretation

- Correlated fault stick (with intersection cross with other surveys)
- Non-correlated fault stick
- Conceptual fault stick
- Basal décollement zone
- Fault corridor boundary
- Major dip change line
- Fold axial surface

- Displacement vector pointing towards the observer
 - Displacement vector pointing away from the observer
 - Displacement vector during Cenozoic
 - Displacement vector during Jurassic
- #### Stratigraphic Interpretation
- Horizon well defined
 - Horizon poorly defined / intra Paleozoic reflections / near Base Quaternary model (GESDEC)
 - Horizons TWT at line intersections
 - Projected perpendicular to the seismic line

Well abbreviation (Map and section)

- | | |
|-----------|--------|
| GEo-01 | GEo-01 |
| GEo-02 | GEo-02 |
| Gex CD-01 | GEX-1 |
| Gex CD-07 | GEX-7 |

Other abbreviations

- | | |
|-------|---------------------|
| Trace | Seismic trace |
| FZ | Fault zone |
| FC | Fault corridor |
| TWT | Two way travelttime |
| proj. | Projected |
| s | Seconds |
| nT | near Top |
| nB | near Base |
| Q | Quaternary |
| Cen | Cenozoic |
| UMa | Upper Malm |
| LMa | Lower Malm |
| Do | Dogger |
| Li | Lias |
| Keu | Keuper |
| Mus | Muschelkalk |
| Mes | Mesozoic |
| InPal | Intra Paleozoic |

Legend

- Tectonic domains
- Molasse Basin
- Subalpine Molasse
- Internal Jura *
- External Jura
- Penninic nappes
- Ultrahelvetic nappes
- * plus the Salève, Gros Foug and Vvaache structures in the Molasse Basin
- Other features
- Border
- Seismic Lines
- Thrust
- Alpine Thrust

Coordinate system: CH1903+ / LV95