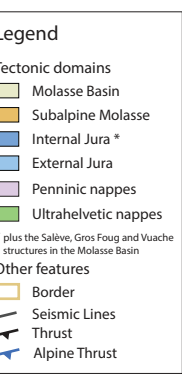
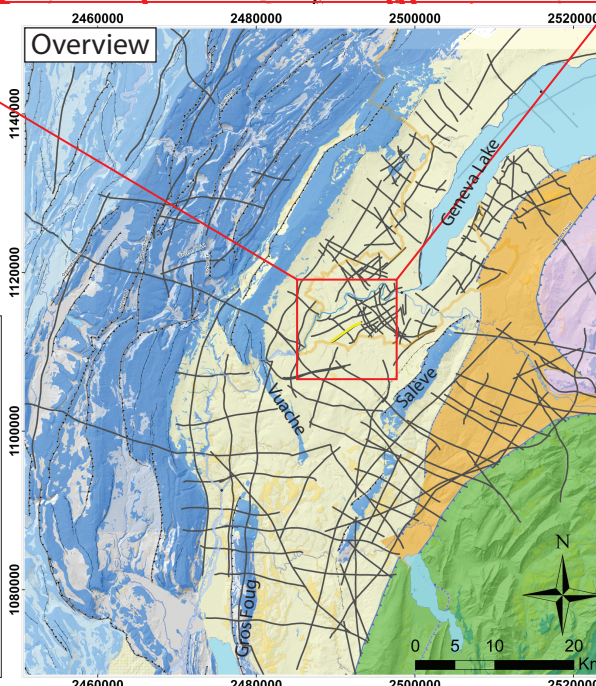
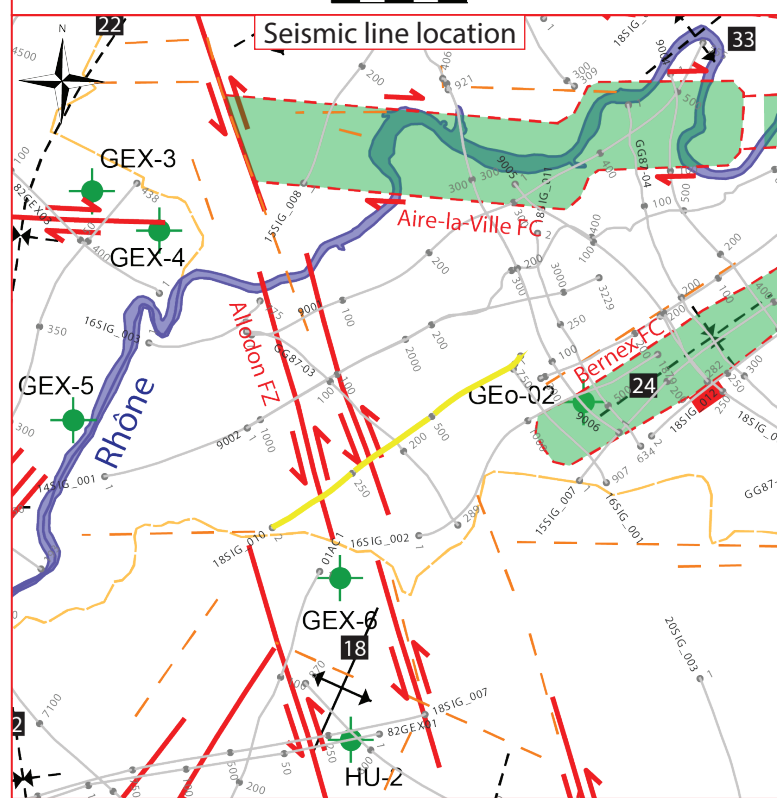
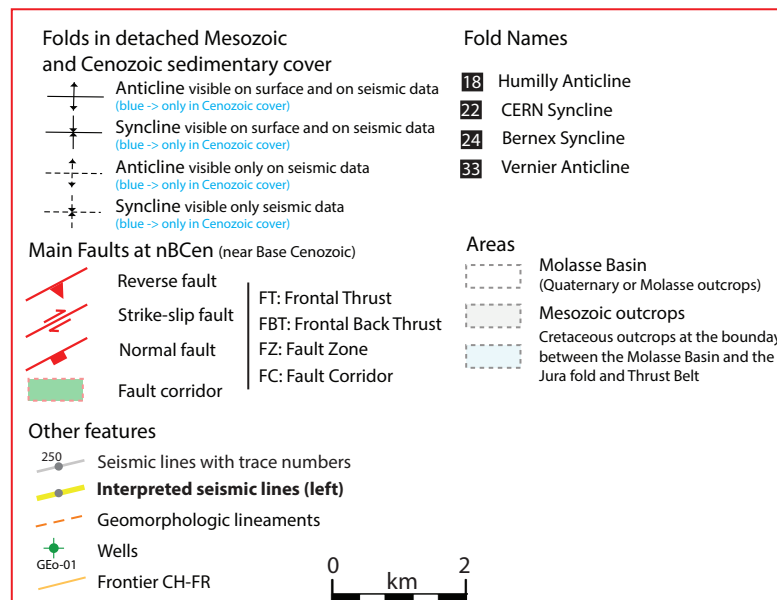
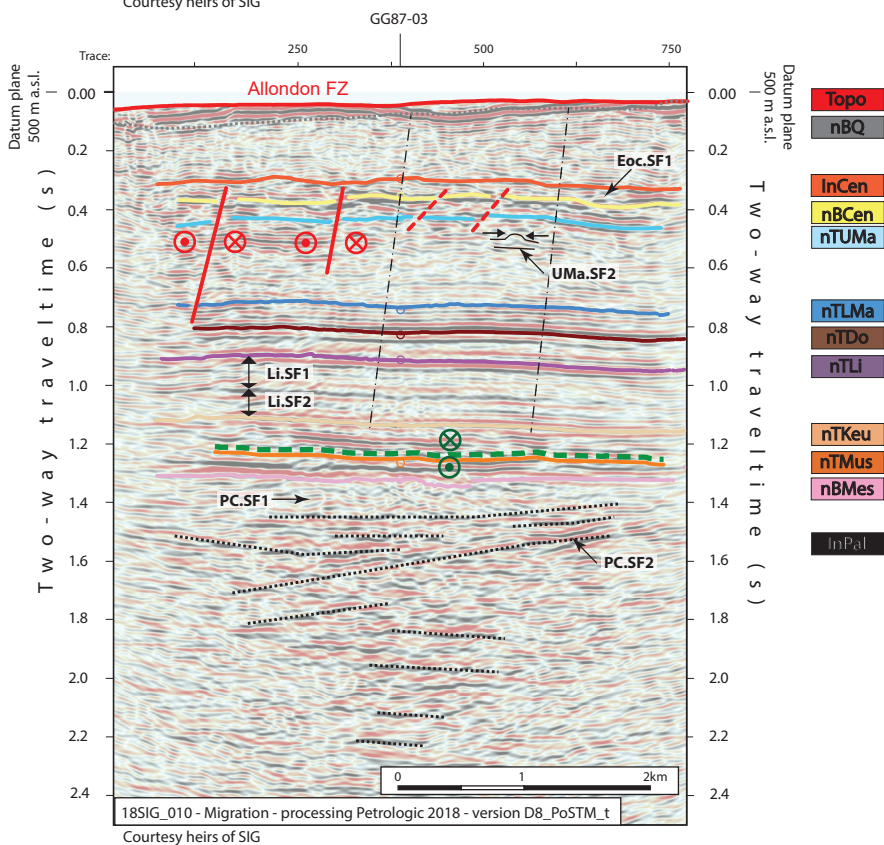
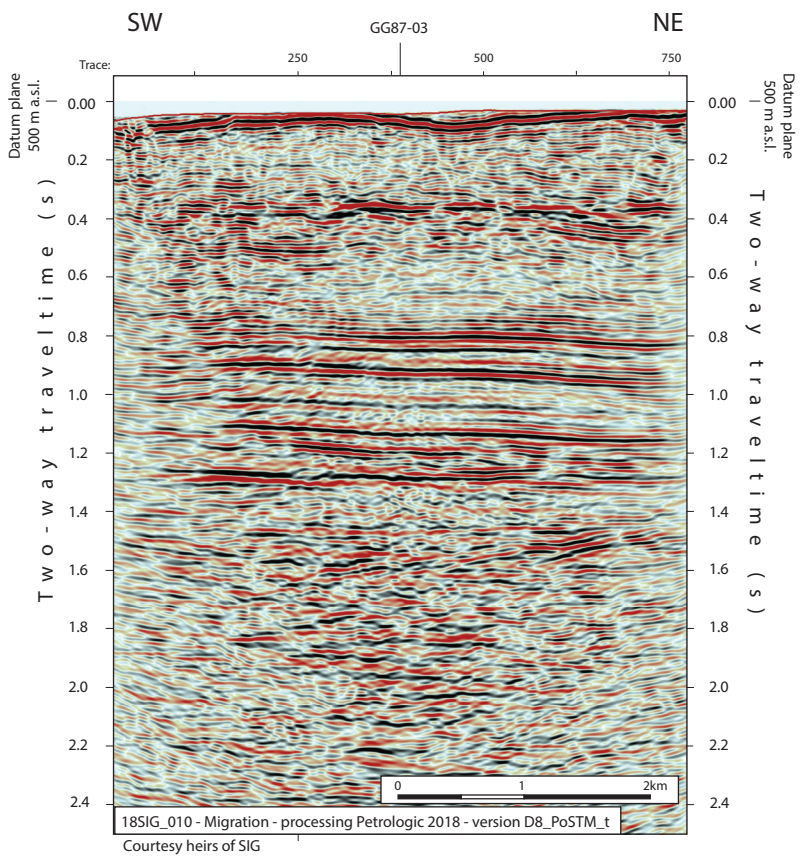


2D seismic line 18SIG_010



Structural Interpretation

- Correlated fault stick (with intersection cross with other surveys)
- Non-correlated fault stick
- Conceptual fault stick
- Basal décollement zone
- Fault corridor boundary
- Major dip change line
- Fold axial surface

- Displacement vector pointing towards the observer
 - Displacement vector pointing away from the observer
 - Displacement vector during Cenozoic
 - Displacement vector during Jurassic
- #### Stratigraphic Interpretation
- Horizon well defined
 - Horizon poorly defined / intra Paleozoic reflections / near Base Quaternary model (GESDEC)
 - Horizons TWT at line intersections
 - Projected perpendicular to the seismic line

- #### Well abbreviation (Map and section)
- | | |
|-----------|--------|
| GEO-02 | GEO-02 |
| Gex CD-03 | GEX-3 |
| Gex CD-04 | GEX-4 |
| Gex CD-05 | GEX-5 |
| Gex CD-06 | GEX-6 |
| Humilly-2 | HU-2 |
- #### Seismic facies (SF) (see chap 4.2.)
- Unit.SFx (seismic facies name)
 - Geometrical bedform and termination pattern

- #### Other abbreviations
- | | |
|---------|--------------------|
| Trace | Seismic trace |
| FZ | Fault zone |
| FC | Fault corridor |
| TWT | Two way traveltime |
| proj. s | Projected Seconds |
| nT | near Top |
| nB | near Base |
| Q | Quaternary |
| Cen | Cenozoic |
| UMa | Upper Malm |
| LMa | Lower Malm |
| Do | Dogger |
| Li | Lias |
| Keu | Keuper |
| Mus | Muschelkalk |
| Mes | Mesozoic |
| InPal | Intra Paleozoic |