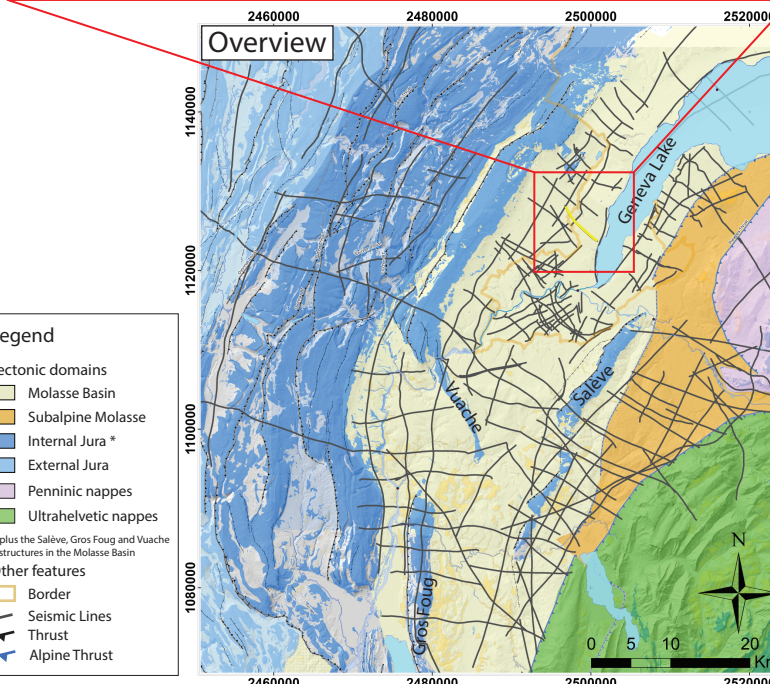
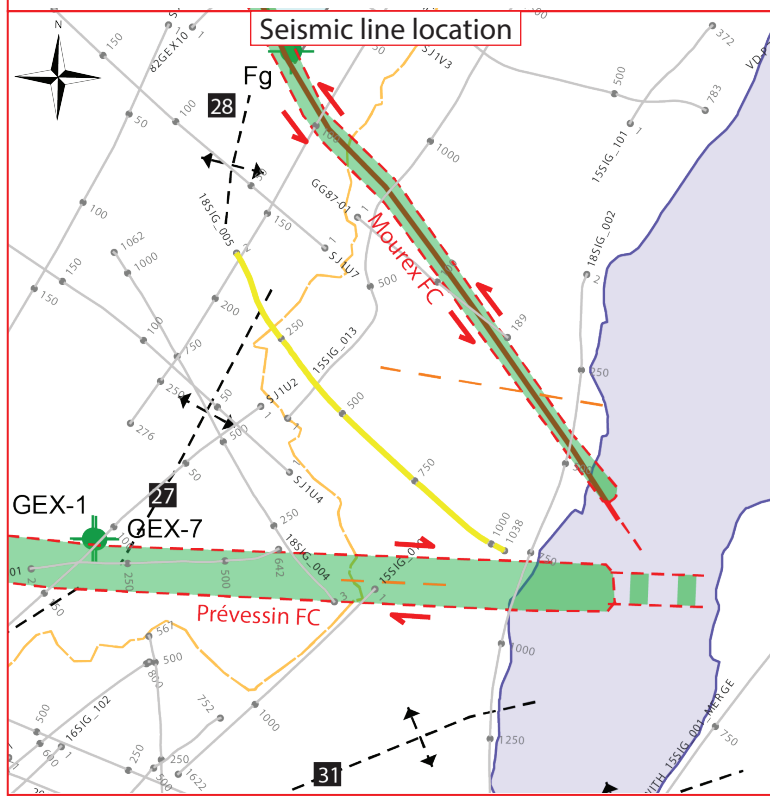
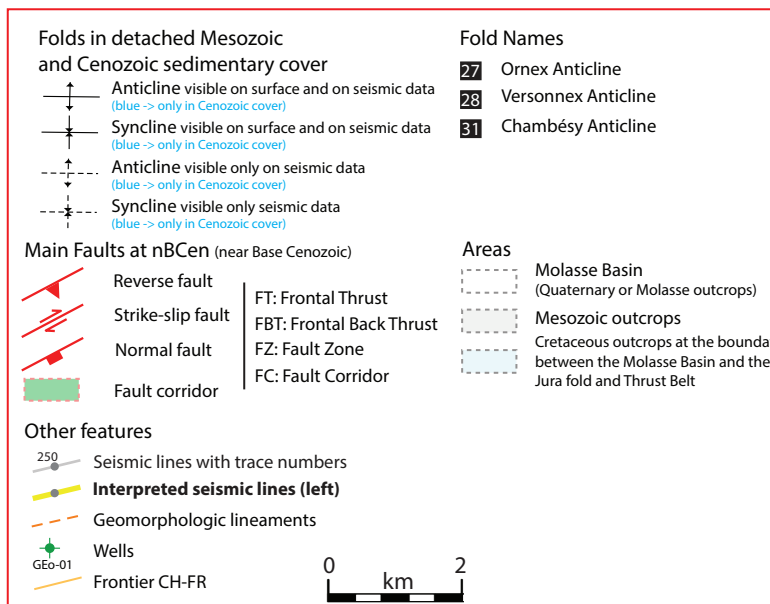
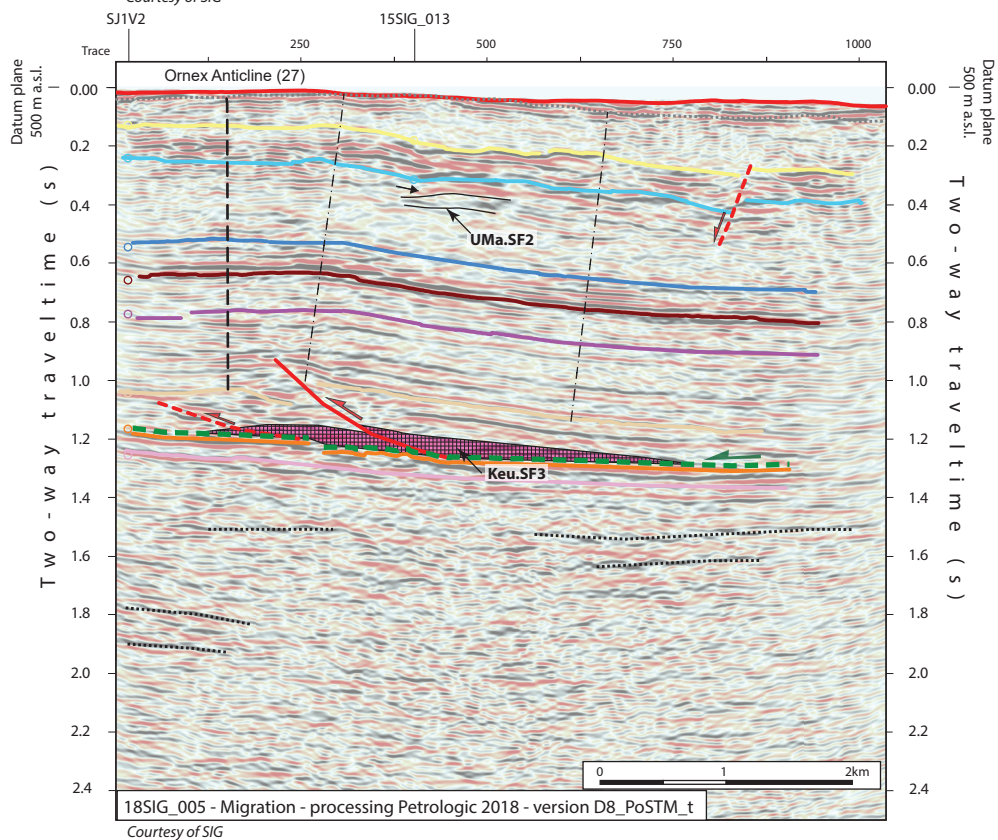
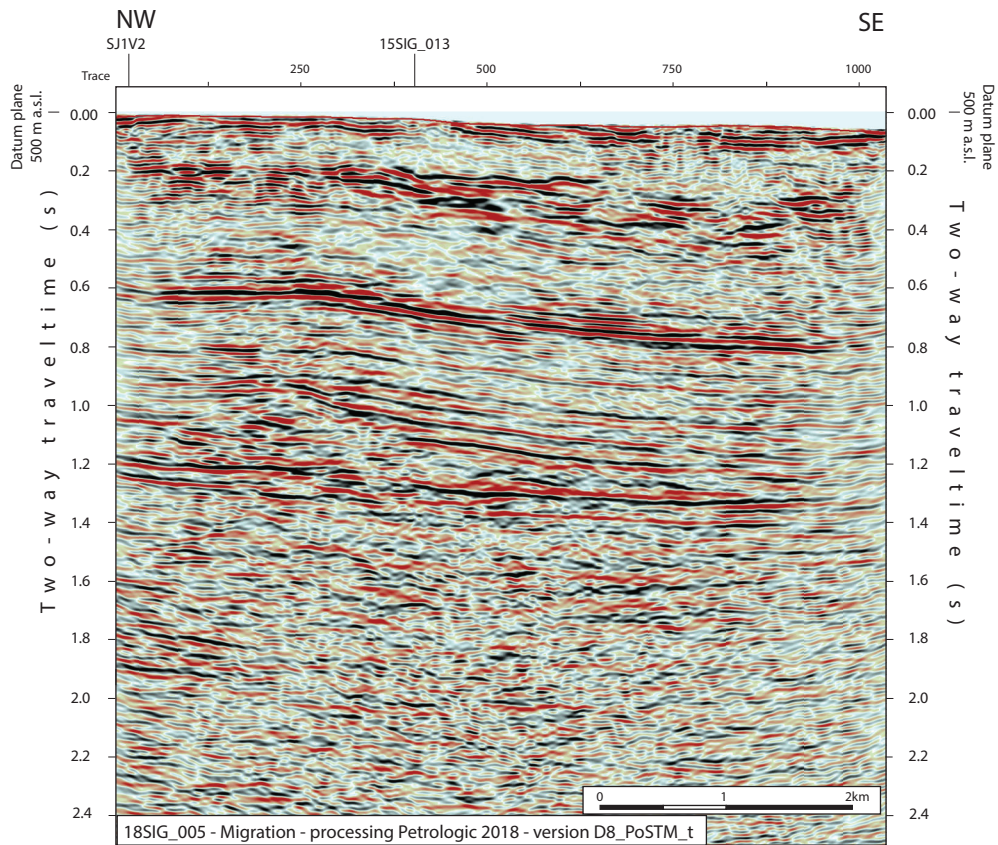


2D seismic line 18SIG_005 (CH-FR)



Structural Interpretation

- Correlated fault stick (with intersection cross with other surveys)
- Non-correlated fault stick
- Conceptual fault stick
- Basal décollement zone
- Fault corridor boundary
- Major dip change line
- Fold axial surface

- Displacement vector pointing towards the observer
 - Displacement vector pointing away from the observer
 - Displacement vector during Cenozoic
 - Displacement vector during Jurassic
- Stratigraphic Interpretation
- Horizon well defined
 - Horizon poorly defined / intra Paleozoic reflections / near Base Quaternary model (GESDEC)
 - Horizons TWT at line intersections
 - Projected perpendicular to the seismic line

Well abbreviation (Map and section)

- | | |
|-----------|-------|
| Grilly | Fg |
| Gex CD-01 | GEX-1 |
| Gex CD-07 | GEX-7 |
- Seismic facies (SF) (see chap 4.2.)
- Unit.SFx (seismic facies name)
 - Keu.SF3 (likely haalite dominated layer)
 - Geometrical bedform and termination pattern

Other abbreviations

- | | |
|-------|--------------------|
| Trace | Seismic trace |
| FZ | Fault zone |
| FC | Fault corridor |
| TWT | Two way traveltime |
| proj. | Projected |
| s | Seconds |
| nT | near Top |
| nB | near Base |
| Q | Quaternary |
| Cen | Cenozoic |
| UMa | Upper Malm |
| LMa | Lower Malm |
| Do | Dogger |
| Li | Lias |
| Keu | Keuper |
| Mus | Muschelkalk |
| Mes | Mesozoic |
| InPal | Intra Paleozoic |

Legend

- Tectonic domains
- Molasse Basin
 - Subalpine Molasse
 - Internal Jura *
 - External Jura
 - Penninic nappes
 - Ultrahelvetic nappes
- * plus the Salève, Gros Foug and Vuache structures in the Molasse Basin
- Other features
- Border
 - Seismic Lines
 - Thrust
 - Alpine Thrust