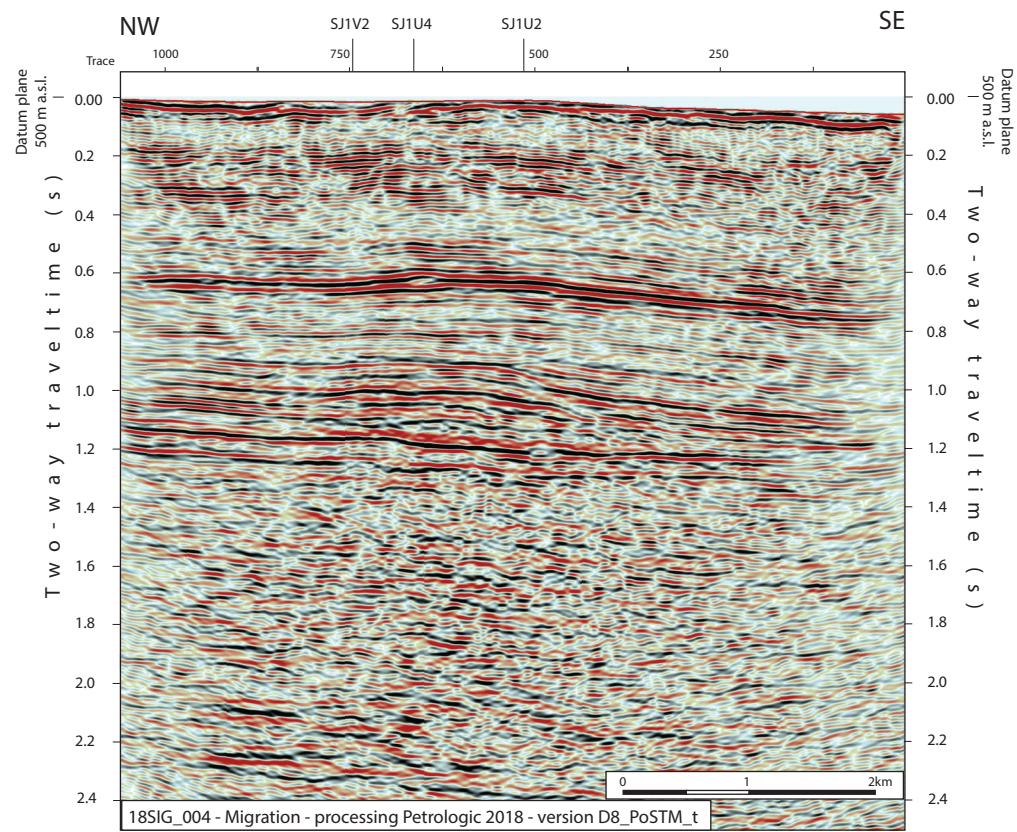
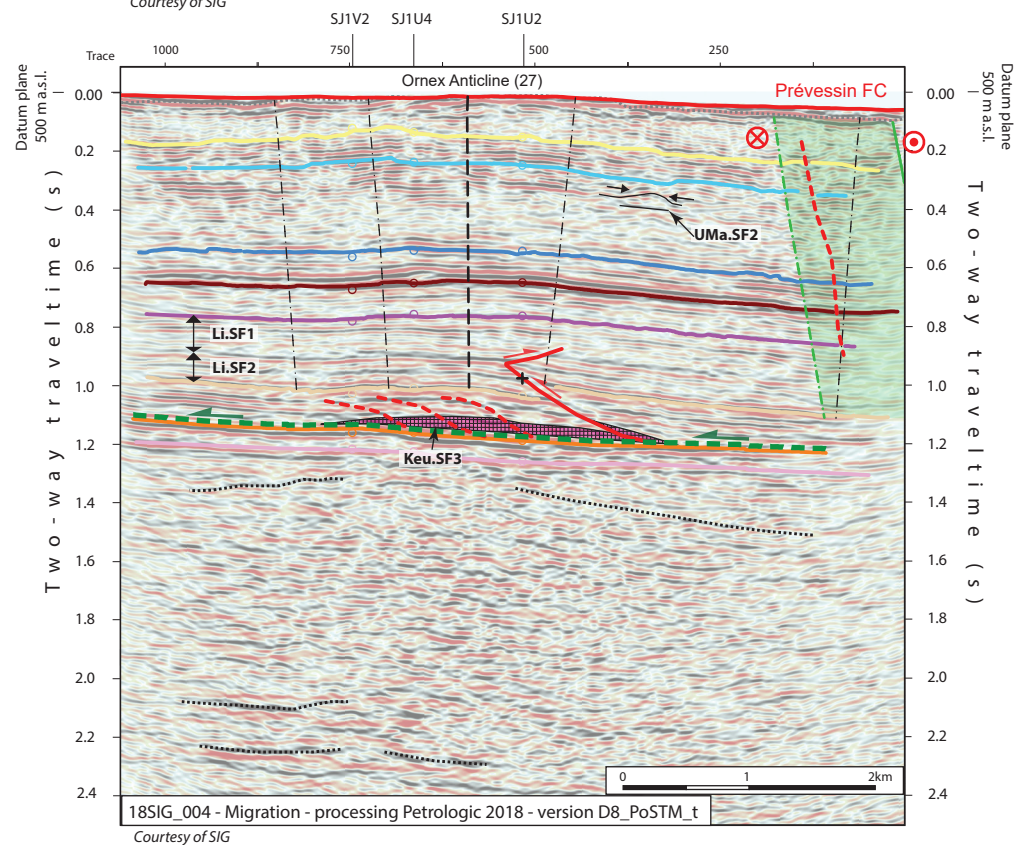


2D seismic line 18SIG_004 (FR)



18SIG_004 - Migration - processing Petrologic 2018 - version D8_PoSTM_t
 Courtesy of SIG



18SIG_004 - Migration - processing Petrologic 2018 - version D8_PoSTM_t
 Courtesy of SIG

Structural Interpretation

- Correlated fault stick (with intersection cross with other surveys)
- Non-correlated fault stick
- Conceptual fault stick
- Basal décollement zone
- Fault corridor boundary
- Major dip change line
- Fold axial surface

Stratigraphic Interpretation

- Displacement vector pointing towards the observer
- Displacement vector pointing away from the observer
- Horizon well defined
- Horizon poorly defined / intra Paleozoic reflections / near Base Quaternary model (GESDEC)
- Horizons TWT at line intersections
- Projected perpendicular to the seismic line

Well abbreviation (Map and section)

| | |
|-----------|--------|
| GEO-01 | GEO-01 |
| GEO-02 | GEO-02 |
| Gex CD-01 | GEX-1 |
| Gex CD-07 | GEX-7 |

Seismic facies (SF) (see chap 4.2.)

- Unit.SFx (seismic facies name)
- Keu.SF3 (likely haalite dominated layer)
- Geometrical bedform and termination pattern

Other abbreviations

- Trace
- FZ
- FC
- TWT
- proj.
- s
- nT
- nB
- Q
- Cen
- UMa
- LMa
- Do
- Li
- Keu
- Mus
- Mes
- InPal
- Seismic trace
- Fault zone
- Fault corridor
- Two way travelttime
- Projected
- Seconds
- near Top
- near Base
- Quaternary
- Cenozoic
- Upper Malm
- Lower Malm
- Dogger
- Lias
- Keuper
- Muschelkalk
- Mesozoic
- Intra Paleozoic

