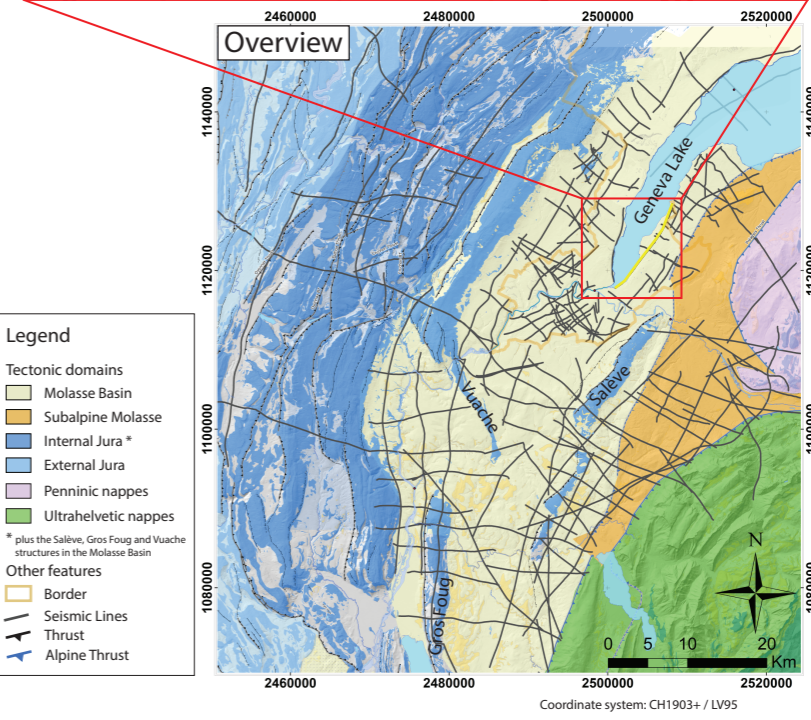
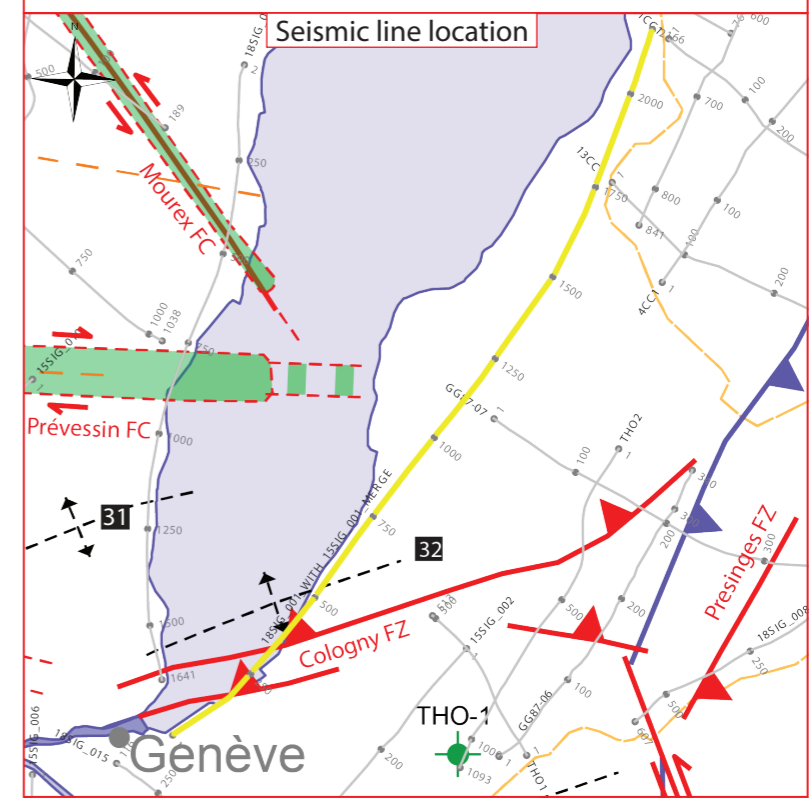
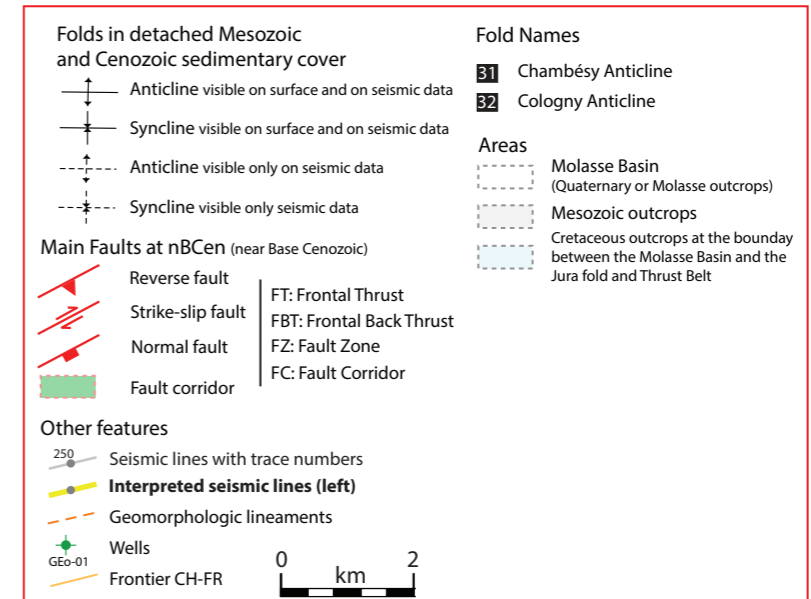
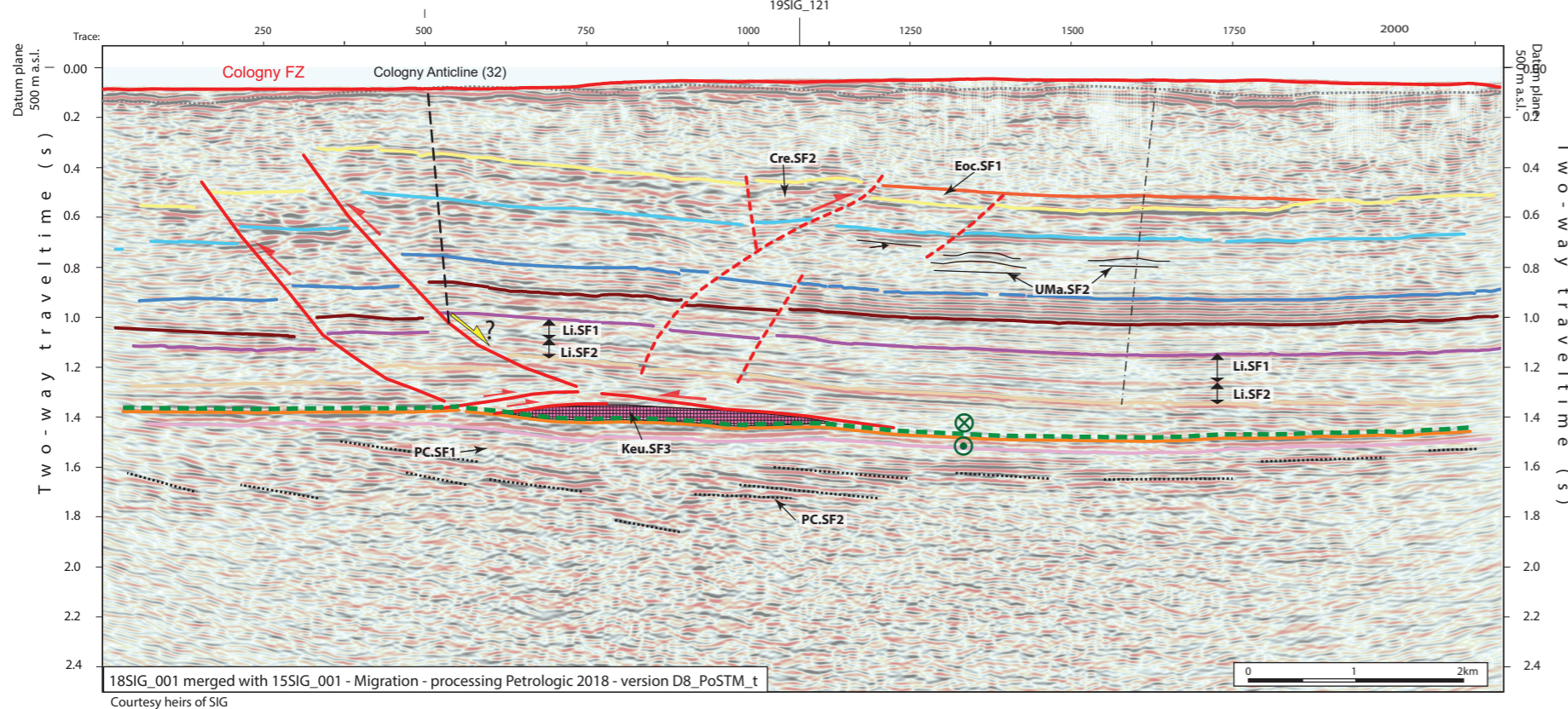
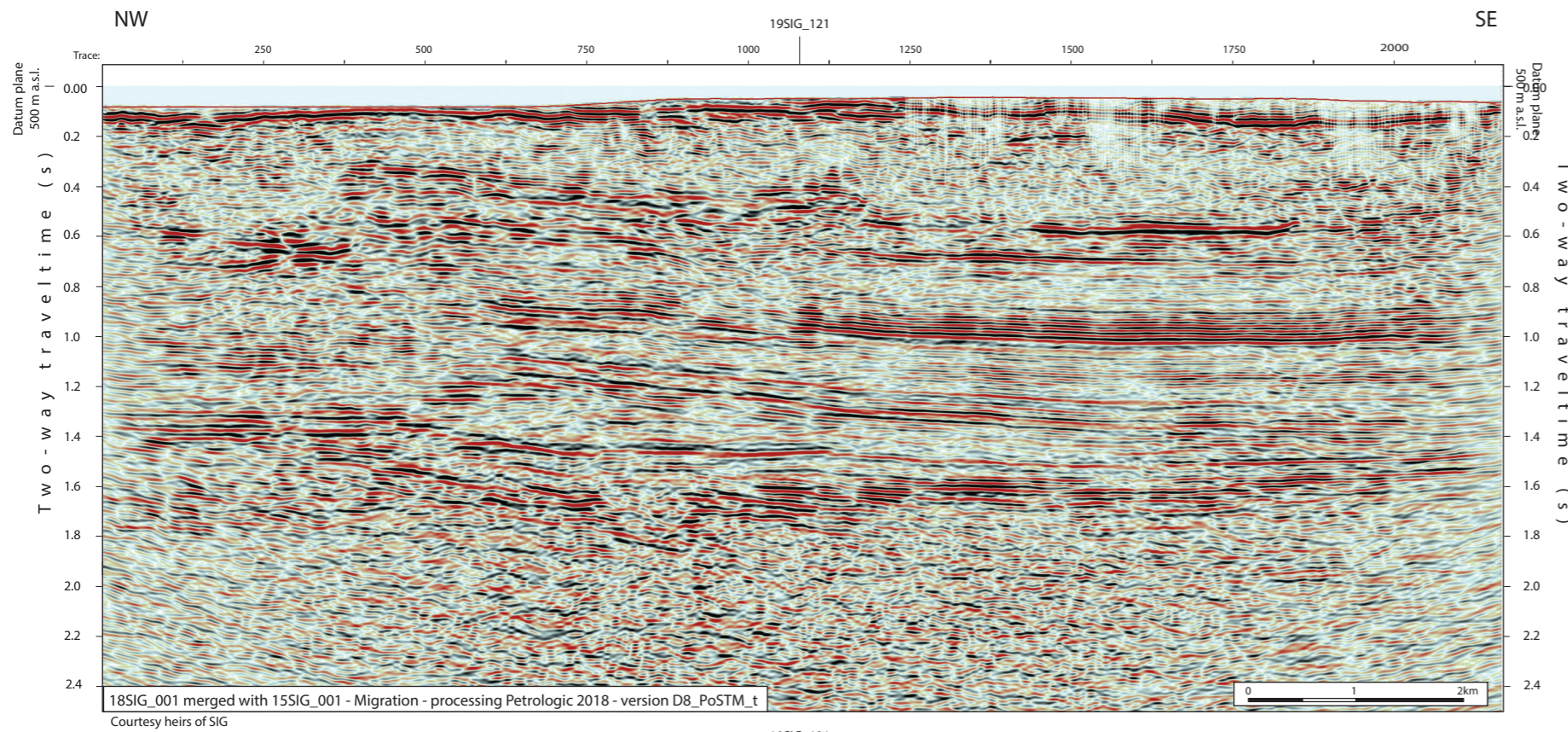


2D seismic line 18SIG_001 merged with 15SIG_001



- Structural Interpretation**
- Correlated fault stick (with intersection cross with other surveys)
 - Non-correlated fault stick
 - Conceptual fault stick
 - Basal décollement zone
 - Fault corridor boundary
 - Major dip change line
 - Fold axial surface

- Displacement vector pointing towards the observer
 - Displacement vector pointing away from the observer
 - Displacement vector during Cenozoic
 - Displacement vector during Jurassic
- Stratigraphic Interpretation**
- Horizon well defined
 - Horizon poorly defined / intra Paleozoic reflections / near Base Quaternary model (GESDEC)
 - Horizons TWT at line intersections
 - Projected perpendicular to the seismic line

- Well abbreviation (Map and section)**
- Thónex-1 THO1
- Seismic facies (SF) (see chap 4.2.)**
- Unit.SFx (seismic facies name)
 - Keu.SF3 (likely haalite dominated layer)
 - Geometrical bedform and termination pattern
- Other abbreviations**
- | | |
|-------|--------------------|
| Trace | Seismic trace |
| FZ | Fault zone |
| FC | Fault corridor |
| TWT | Two way traveltime |
| proj. | Projected |
| s | Seconds |
| nT | near Top |
| nB | near Base |
| Q | Quaternary |
| Cen | Cenozoic |
| UMa | Upper Malm |
| LMa | Lower Malm |
| Do | Dogger |
| Li | Lias |
| Keu | Keuper |
| Mus | Muschelkalk |
| Mes | Mesozoic |
| InPal | Intra Paleozoic |