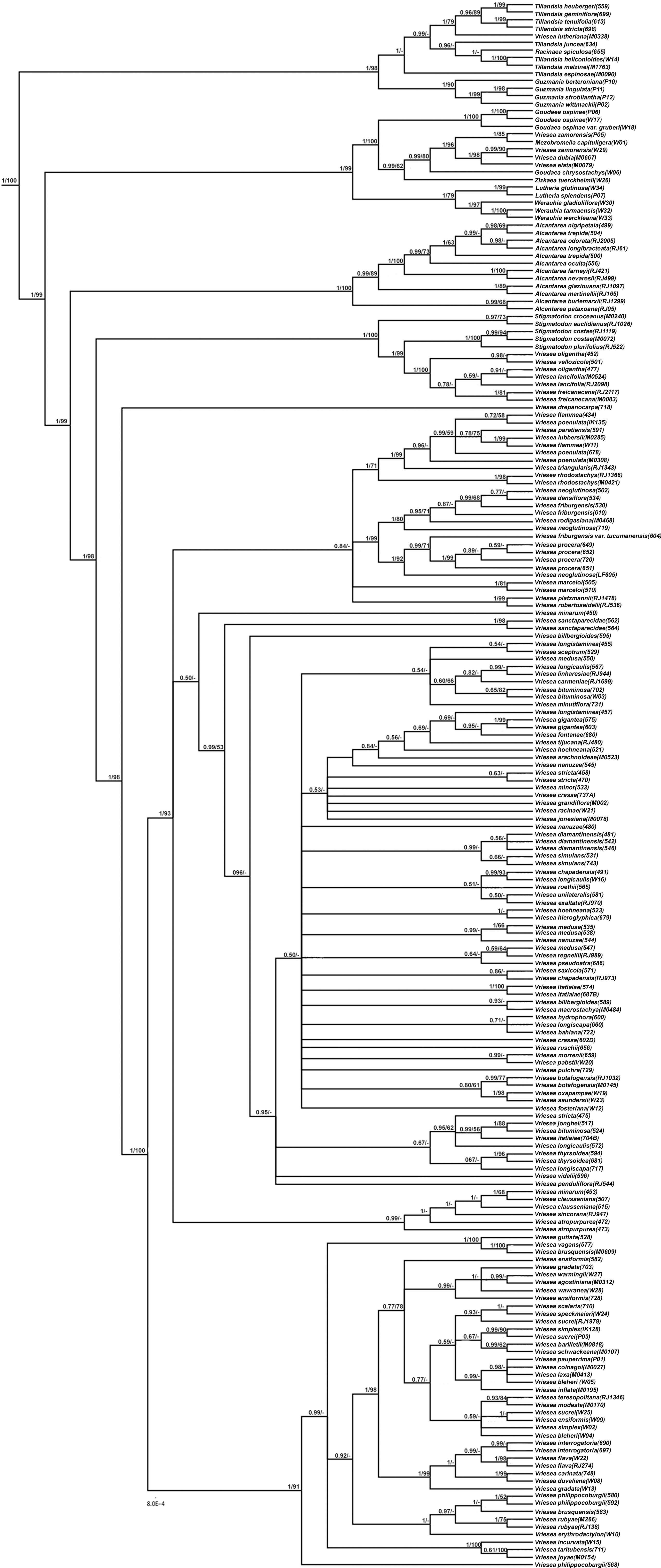


0.006

BI

ML



FigureS1. Cladogram from the maximum-likelihood (ML) analysis based on nuclear gene *phyC* for 171 specimens of Tillandsioideae. First numbers above the branches represent bootstrap values (BS) and the second number represent posterior probabilities (PP). Only values > 50% are shown. In detail, phylogram with proportional branch lengths from the BI and ML analyses.

Figure S2. Cladogram from the Bayesian inference (BI) based on 19 concatenated genes (*atpA*, *atpB*, *atpF*, *clpP*, *ndhA*, *ndhD*, *psaA*, *psaB*, *psbA*, *psbB*, *rpl16*, *rpoB*, *rpoC1*, *rpoC2*, *trnK-UUU*, *trnL-GAU*, *ycf1*, *ycf3*, *phyC*) for 206 species of Tillandsioideae. The first number above the branches represents posterior probabilities (PP), and the second number represents bootstrap values (BS). Only values > 50% are shown. In detail, phylogram with proportional branch lengths from the BI and ML analyses.

| Species | Silica n°. | Voucher | Locality | GenBank |
|---|------------|--------------------------------|---------------------------------------|------------|
| <i>Alcantarea burle-marxii</i> (Leme) J.R.Grant | RJ1299 | (RBvb) 1299 | Brazil, MG, Pedra Azul | MN480380 |
| <i>Alcantarea farneyi</i> (Martinelli & A.Costa) J.R.Grant | RJ421 | (RBvb) 421 | Brazil, RJ, Santa Maria Madalena | MN480331 |
| <i>Alcantarea glaziouana</i> (Lemaire) Leme | RJ1097 | (RBvb) 1097 | Brazil, RJ, Rio de Janeiro | MN480332 |
| <i>Alcantarea longibracteata</i> Leme & Fraga | RJ61 | (RBvb) 61 | Brazil, ES, Aguia Branca | MN480379 |
| <i>Alcantarea martinellii</i> Versieux & Wand. | RJ165 | (RBvb) 165 | Brazil, RJ, Petrópolis | MN480378 |
| <i>Alcantarea nevaresii</i> Leme | RJ499 | (RBvb) 499 | Brazil | – |
| <i>Alcantarea nigripetala</i> Leme & Kollmann | 499/TM499 | T.M. Machado et al. 499 (BHCB) | Brazil, ES, Pancas | – |
| <i>Alcantarea occulta</i> Leme | 556/TM556 | T.M. Machado et al. 556 (BHCB) | Brazil, MG, Alvarenga | MN480384 |
| <i>Alcantarea odorata</i> (Leme) J.R. Grant | RJ2005 | (RBvb) 2005 | Brazil, MG, Além Paraíba | MN480382 |
| <i>Alcantarea pataxoana</i> Versieux | RJ05 | (RBvb) 05 | Brazil, BA, Presidente Tancredo Neves | MN521424 |
| <i>Alcantarea trepida</i> Versieux & Wand. | 500/TM500 | T.M. Machado et al. 500 (BHCB) | Brazil, ES, Pancas | MN521420 |
| <i>Alcantarea trepida</i> Versieux & Wand. | 504/TM504 | T.M. Machado et al. 504 (BHCB) | Brazil, ES, Pancas | MN480381 |
| <i>Ananas comosus</i> (L.) Merril | – | – | – | KU095956.1 |
| <i>Goudaea chrysostachys</i> (E. Morren) W. Till & Barfuss | W06 | (WU-HBV) B268/87 | Peru, Huanuco | MN534389 |
| <i>Goudaea ospinae</i> (H. Luther) W. Till & Barfuss | P06 | (P) living collection | in cultivation | MN480333 |
| <i>Goudaea ospinae</i> (H. Luther) W. Till & Barfuss | W17 | (WU-HBV) B96/B96 | Colombia | MN480325 |
| <i>Goudaea ospinae</i> var. <i>gruberi</i> (H. Luther) W. Till & Barfuss | W18 | (WU-HBV) B97B393-1 | in cultivation | MN480326 |
| <i>Guzmania berteroniana</i> (Schult.f.) Mez | P10 | (P) living collection | in cultivation | MN521415 |
| <i>Guzmania lingulata</i> (L.) Mez | P11 | (P) living collection | in cultivation | MN534386 |
| <i>Guzmania strobilantha</i> (Ruiz & Pav.) Mez | P12 | (P) living collection | in cultivation | MN521423 |
| <i>Guzmania wittmackii</i> (André) André ex Mez | P02 | (P) living collection | in cultivation | – |
| <i>Guzmania wittmackii</i> (André) André ex Mez | – | – | – | KX753898.1 |
| <i>Lutheria glutinosa</i> (Lindl.) Barfuss & W. Till | W34 | (WU-HBV) B444/87 | in cultivation | MN480329 |
| <i>Lutheria splendens</i> (Brongn.) Barfuss & W. Till | P07 | (P) living collection | in cultivation | – |
| <i>Lutheria splendens</i> (Brongn.) Barfuss & W. Till | – | – | – | KX753915.1 |
| <i>Mezobromelia capituligera</i> (Griseb.) J.R.Grant | W01 | (WU-HBV) B00B144-2(234) | Bolivia | MN480334 |
| <i>Racinaea spiculosa</i> (Griseb.) M.A.Spencer & L.B.Sm. | 655/TM655 | T.M. Machado et al. 655 (BHCB) | Brazil, ES, Santa Teresa | MN480335 |
| <i>Stigmatodon belloii</i> (Leme) Leme, G.K.Br. & Barfuss | RJ380 | (RBvb) 380 | Brazil, ES, Cachoeiro do Itapemirim | MN480377 |
| <i>Stigmatodon costae</i> (B.R. Silva & Leme) Leme, G.K. Br. & Barfuss | M0072 | (SEL) 2001-0072 | Brazil, RJ, Niteroi | MN521407 |
| <i>Stigmatodon costae</i> (B.R. Silva & Leme) Leme, G.K. Br. & Barfuss | RJ1119 | (RBvb) 1119 | Brazil, RJ, Rio de Janeiro | MN480376 |
| <i>Stigmatodon croceanus</i> (Leme & G.K. Br.) Leme, G.K.Br. & Barfuss | M0240 | (SEL) 2001-0240 | Brazil, RJ, Santa Maria Madalena | MN480336 |
| <i>Stigmatodon euclidianus</i> (Leme & G.K. Br.) Leme, G.K. Br. & Barfuss | RJ1026 | (RBvb) 1026 | Brazil, ES, Nova Venécia | – |
| <i>Stigmatodon plurifolius</i> (Leme) Leme, G.K. Br. & Barfuss | RJ522 | (RBvb) 522 | Brazil | MN480343 |

| | | | | |
|---|-----------|--|---------------------------------------|------------|
| <i>Tillandsia espinosae</i> L.B.Sm. | M0090 | (SEL) 1992-0090 T.M. Machado et al. | Peru, Rio Chancay | MN480344 |
| <i>Tillandsia geminiflora</i> Brongn. | 699/TM699 | 699 (BHCB) | Brazil, RJ, Itatiaia | MN521443 |
| <i>Tillandsia heliconioides</i> Kunth | W14 | (WU-HBV) B10/24-3 T.M. Machado et al. | Guatemala, Izabal | MN480337 |
| <i>Tillandsia heubergeri</i> Ehlers | 559/TM559 | 559 (BHCB) | Brazil, MG, Alvarenga | – |
| <i>Tillandsia heubergeri</i> Ehlers | – | – | – | KX753920.1 |
| <i>Tillandsia juncea</i> (Ruiz & Pav.) Poir. | 634/TM634 | T.M. Machado et al. 634 (BHCB) | Brazil, MG, Medina | MN480338 |
| <i>Tillandsia malzinei</i> (E.Morren) Baker | M1763 | (SEL) 1979-1763 T.M. Machado et al. | Mexico | MN480339 |
| <i>Tillandsia stricta</i> Sol. | 698/TM698 | 698 (BHCB) | Brazil, RJ, Itatiaia | – |
| <i>Tillandsia stricta</i> Sol. | – | – | – | KX753950.1 |
| <i>Tillandsia tenuifolia</i> L. | 613/TM613 | T.M. Machado et al. 613 (BHCB) | Brazil, SP, Bom Sucesso de Itararé | MN480340 |
| <i>Tillandsia tenuifolia</i> L. | – | – | – | KX753909.1 |
| <i>Vriesea agostiniana</i> E.Pereira | M0312 | (SEL) 2002-0312 F.Fernandes et al. | Brazil, RJ, Santo Aleixo | MN480407 |
| <i>Vriesea altodaserrae</i> L.B.Sm. | FF812 | 812 (BHCB) | Brazil, Paraná | MN480414 |
| <i>Vriesea arachnoidea</i> A.F. Costa | M0523 | (SEL) 1996-0523 T.M. Machado et al. | Brazil, RJ, Macaé de Cima | MN534374 |
| <i>Vriesea atropurpurea</i> Silveira | 472/TM472 | 472 (BHCB) | Brazil, MG, Santana do Riacho | MN521421 |
| <i>Vriesea atropurpurea</i> Silveira | 473/TM473 | T.M. Machado et al. 473 (BHCB) | Brazil, MG, Santana do Riacho | – |
| <i>Vriesea bahiana</i> Leme | 722/TM722 | T.M. Machado et al. 722 (BHCB) | Brazil, BA, Santa Teresinha | MN480389 |
| <i>Vriesea barilletii</i> E.Morren | M0818 | (SEL) 1990-0818 T.M. Machado et al. | in cultivation Brazil, MG, | – |
| <i>Vriesea billbergioides</i> E.Morren ex Mez | 589/TM589 | 589 (BHCB) | Simonésia | MN521422 |
| <i>Vriesea billbergioides</i> E.Morren ex Mez | 595/TM595 | T.M. Machado et al. 595 (BHCB) | Brazil, RJ, Teresópolis | – |
| <i>Vriesea bituminosa</i> Wawra | 524/TM524 | T.M. Machado et al. 524 (BHCB) | Brazil, SP, Piquete | – |
| <i>Vriesea bituminosa</i> Wawra | 702/TM702 | T.M. Machado et al. 702 (BHCB) | Brazil, RJ, Itatiaia | MN480345 |
| <i>Vriesea bituminosa</i> Wawra | W03 | (WU-HBV) B275/95 | in cultivation | MN480327 |
| <i>Vriesea bleheri</i> forma <i>atroviolaceifolia</i> Röth & Weber | W05 | (WU-HBV) B97B232- 1 | Brazil, Rio de Janeiro | MN480392 |
| <i>Vriesea bleheri</i> Roeth & W.Weber | W04 | (WU-HBV) B12/19-1 | Brazil, Rio de Janeiro | MN480367 |
| <i>Vriesea botafogensis</i> Mez | M0145 | (SEL) 1995-0145 | Brazil, RJ, Rio de Janeiro | MN480355 |
| <i>Vriesea botafogensis</i> Mez | RJ1032 | (RBvb) 1032 | in cultivation | MN480354 |
| <i>Vriesea brusquensis</i> Reitz | 583/TM583 | T.M. Machado et al. 583 (BHCB) | Brazil, SP, Santo André | – |
| <i>Vriesea brusquensis</i> Reitz | M0609 | (SEL) 1996-0609 T.M. Machado et al. | Brazil, Santa Catarina | MN534371 |
| <i>Vriesea carinata</i> Wawra | 748/TM748 | 748 (BHCB) | Brazil, SP, Piquete | MN480347 |
| <i>Vriesea carmeniae</i> R. Moura & A. F. Costa | RJ1699 | (RBvb) 1699 T.M. Machado et al. | Brazil, Ceará, Guaramiranga | MN480417 |
| <i>Vriesea chapadensis</i> Leme | 491/TM491 | T.M. Machado et al. 491 (BHCB) | Brazil, BA, Rio de Contas | – |
| <i>Vriesea chapadensis</i> Leme | RJ973 | (RBvb) 973 | Brazil, BA, Palmeiras | MN521432 |
| <i>Vriesea clauseniana</i> (Baker) Mez | 507/TM507 | T.M. Machado et al. 507 (BHCB) | Brazil, MG, Catas Altas | – |
| <i>Vriesea clauseniana</i> (Baker) Mez | 515/TM515 | T.M. Machado et al. 515 (BHCB) | Brazil, MG, Catas Altas | MN480399 |
| <i>Vriesea colnagoi</i> Pereira & I.A.Penna | M0027 | (SEL) 1997-0027 | Brazil, ES, Pedra do Garrafão | – |

| | | | | |
|--|-----------|------------------------------------|---|----------|
| <i>Vriesea colnagoi</i> Pereira & I.A.Penna | RJ1412 | (RBvb) 1412 | Brazil, Espírito Santo | MN480388 |
| <i>Vriesea correia-araujo</i> Pereira & I.A.Penna | W07 | (WU-HBV) B97 | Brazil, Rio de Janeiro | MN480323 |
| <i>Vriesea crassa</i> Mez | 597/TM597 | T.M. Machado et al. 597 (BHCB) | Brazil, RJ, Teresópolis | MN480416 |
| <i>Vriesea crassa</i> Mez | 602/TM602 | T.M. Machado et al. 602D (BHCB) | Brazil, RJ, Nova Friburgo | – |
| <i>Vriesea crassa</i> Mez | 737/TM737 | T.M. Machado et al. 737A (BHCB) | Brazil, RJ, Morro do Cuca | MN480396 |
| <i>Vriesea densiflora</i> Mez | 534/TM534 | T.M. Machado et al. 534 (BHCB) | Brazil, MG, São Gonçalo do Rio Preto | MN480395 |
| <i>Vriesea diamantinensis</i> Leme | 481/TM481 | T.M. Machado et al. 481 (BHCB) | Brazil, MG, Diamantina | MN521404 |
| <i>Vriesea diamantinensis</i> Leme | 542/TM542 | T.M. Machado et al. 542 (BHCB) | Brazil, MG, São Gonçalo do Rio Preto | – |
| <i>Vriesea diamantinensis</i> Leme | 546/TM546 | T.M. Machado et al. 546 (BHCB) | Brazil, MG, São Gonçalo do Rio Preto | MN480368 |
| <i>Vriesea drepanocarpa</i> (Baker) Mez | 718/TM718 | T.M. Machado et al. 718 (BHCB) | Brazil, RJ, Paraty | MN480375 |
| <i>Vriesea dubia</i> (L.B.Sm.) L.B.Sm. | M0667 | (SEL) 1990-0667 | Ecuador, Morona- Santiago | – |
| <i>Vriesea duvaliana</i> E.Morren | W08 | (WU-HBV) B38/96 | Brazil, RJ, Itatiaia | MN480387 |
| <i>Vriesea elata</i> (Baker) L.B.Sm. | M0079 | (SEL) 2000-0079 | Colombia | MN480350 |
| <i>Vriesea ensiformis</i> (Vell.) Beer | 582/TM582 | T.M. Machado et al. 582 (BHCB) | Brazil, SP, Santo André | – |
| <i>Vriesea ensiformis</i> (Vell.) Beer | 728/TM728 | T.M. Machado et al. 728 (BHCB) | Brazil, BA, Camacã | MN480404 |
| <i>Vriesea ensiformis</i> (Vell.) Beer | W09 | (WU-HBV) B01B108- 1 | in cultivation | MN480386 |
| <i>Vriesea erythrodactylon</i> (E.Morren) E.Morren ex Mez | W10 | (WU-HBV) B243/93 | in cultivation | MN480362 |
| <i>Vriesea exaltata</i> Leme | RJ970 | (RBvb) 970 | Brazil, BA, Palmeiras | – |
| <i>Vriesea flammea</i> L.B.Sm. | 434/TM434 | T.M. Machado et al. 434 (BHCB) | Brazil, ES, Alto Caparaó | MN521440 |
| <i>Vriesea flammea</i> L.B.Sm. | W11 | (WU-HBV) B09/12-1 | Brazil | MN534370 |
| <i>Vriesea flava</i> A.F. Costa, H.Luther & M.G.L. Wanderley | RJ274 | (RBvb) 274 | Brazil, SC, Campo Alegre | MN521430 |
| <i>Vriesea flava</i> A.F. Costa, H.Luther & M.G.L. Wanderley | W22 | (WU-HBV) B98B156- 1 | Brazil | MN521441 |
| <i>Vriesea fontanae</i> Fraga & Leme | 680/TM680 | T.M. Machado et al. 680 (BHCB) | Brazil, ES, Santa Teresa | MN521406 |
| <i>Vriesea fosteriana</i> L.B.Sm. | W12 | (WU-HBV) Leme7576(155) | in cultivation | MN521435 |
| <i>Vriesea freicanecana</i> J. A. Siqueira & Leme | M0083 | (SEL) 2001-0083 | Brazil, Pernambuco | MN480374 |
| <i>Vriesea freicanecana</i> J. A. Siqueira & Leme | RJ2117 | (RBvb) 2117 | in cultivation | MN534387 |
| <i>Vriesea friburgensis</i> Mez | 530/TM530 | T.M. Machado et al. 530 (BHCB) | Brazil, SP, Wecslau Brás | – |
| <i>Vriesea friburgensis</i> Mez | 532/TM532 | T.M. Machado et al. 532 (BHCB) | Brazil, MG, São Gonçalo do Rio Preto | MN521413 |
| <i>Vriesea friburgensis</i> Mez | 610/TM610 | T.M. Machado et al. 610 (BHCB) | Brazil, SP, Bom Sucesso de Itararé | – |
| <i>Vriesea friburgensis</i> var. <i>tucumanensis</i> (Mez) L.B. Sm. | 604/TM604 | T.M. Machado et al. 604 (BHCB) | Brazil, RJ, Teresópolis | MN534384 |
| <i>Vriesea gigantea</i> Gaudich. | 575/TM575 | T.M. Machado et al. 575 (BHCB) | Brazil, RJ, Itatiaia | – |
| <i>Vriesea gigantea</i> Gaudich. | 603/TM603 | T.M. Machado et al. 603 (BHCB) | Brazil, RJ, Teresópolis | – |
| <i>Vriesea gradata</i> (Baker) Mez | 703/TM703 | T.M. Machado et al. 703 (BHCB) | Brazil, RJ, Itatiaia | – |
| <i>Vriesea gradata</i> (Baker) Mez | W13 | (WU-HBV) B97B374- 1 | in cultivation | MN534388 |
| <i>Vriesea grandiflora</i> Leme | M002 | (SEL) 2005-0002 | Brazil, Rio de Janeiro | MN521434 |

| | | | | |
|---|-----------|------------------------------------|---|----------|
| <i>Vriesea guttata</i> Linden & André | 528/TM528 | T.M. Machado et al. 528 (BHCB) | Brazil, SP, Piquete | MN521446 |
| <i>Vriesea hieroglyphica</i> (Carrière) E.Morren | 679/TM679 | T.M. Machado et al. 679 (BHCB) | Brazil, ES, Santa Teresa | MN480403 |
| <i>Vriesea hoehniana</i> L.B.Sm. | 521/TM521 | T.M. Machado et al. 521 (BHCB) | Brazil, SP, Piquete | MN521414 |
| <i>Vriesea hoehniana</i> L.B.Sm. | 523/TM523 | T.M. Machado et al. 523 (BHCB) | Brazil, SP, Piquete | MN480393 |
| <i>Vriesea hydrophora</i> Ule | 600/TM600 | T.M. Machado et al. 600 (BHCB) | Brazil, RJ, Teresópolis | MN480401 |
| <i>Vriesea incurvata</i> Gaudich. | RJ560 | (RBvb) 560 | Brazil, SP, São Miguel Arcanjo | MN480358 |
| <i>Vriesea incurvata</i> Gaudich. | W15 | (WU-HBV) WT14019 | in cultivation | MN480365 |
| <i>Vriesea inflata</i> (Wawra) Wawra | M0195 | (SEL) 1996-0195 | Brazil, Rio de Janeiro | – |
| <i>Vriesea interrogatoria</i> L.B.Sm. | 690/TM690 | T.M. Machado et al. 690 (BHCB) | Brazil, RJ, Itatiaia | MN534368 |
| <i>Vriesea interrogatoria</i> L.B.Sm. | 697/TM697 | T.M. Machado et al. 697 (BHCB) | Brazil, RJ, Itatiaia | MN534372 |
| <i>Vriesea itatiaiae</i> Wawra | 574/TM574 | T.M. Machado et al. 574 (BHCB) | Brazil, MG, Itamonte | MN521418 |
| <i>Vriesea itatiaiae</i> Wawra | 687/TM687 | T.M. Machado et al. 687B (BHCB) | Brazil, RJ, Teresópolis | – |
| <i>Vriesea itatiaiae</i> Wawra | 704/TM704 | T.M. Machado et al. 704B (BHCB) | Brazil, RJ, Itatiaia | – |
| <i>Vriesea jonesiana</i> Leme | M0078 | (SEL) 2000-0078 | Brazil, SP, Caraguatatuba | MN534390 |
| <i>Vriesea jonghei</i> (K.Koch) E.Morren | 517/TM517 | T.M. Machado et al. 517 (BHCB) | Brazil, SP, Piquete | – |
| <i>Vriesea joyae</i> Pereira & I.A.Penna | M0154 | (SEL) 1988-0154 | Brazil | – |
| <i>Vriesea lancifolia</i> (Baker) L.B.Sm. | M0524 | (SEL) 1996-0524 | Brazil, BA | MN521410 |
| <i>Vriesea lancifolia</i> (Baker) L.B.Sm. | RJ2098 | (RBvb) 2098 | Brazil, BA, Pindobaçu | MN480391 |
| <i>Vriesea laxa</i> (Griseb.) Mez | M0413 | (SEL) 1993-0413 | Venezuela, Falcon | MN480366 |
| <i>Vriesea linharesiae</i> Leme & J.A. Siqueira | RJ944 | (RBvb) 944 | Brazil, BA, Santa Teresinha | MN521425 |
| <i>Vriesea longicaulis</i> (Baker) Mez | 567/TM567 | T.M. Machado et al. 567 (BHCB) | Brazil, RJ, Teresópolis | – |
| <i>Vriesea longicaulis</i> (Baker) Mez | 572/TM572 | T.M. Machado et al. 572 (BHCB) | Brazil, RJ, Itatiaia | – |
| <i>Vriesea longicaulis</i> (Baker) Mez | W16 | (WU-HBV) Leme 5359 | Brazil | – |
| <i>Vriesea longiscapa</i> Ule | 566/TM566 | T.M. Machado et al. 566 (BHCB) | Brazil, RJ, Teresópolis | MN480356 |
| <i>Vriesea longiscapa</i> Ule | 660/TM660 | T.M. Machado et al. 660 (BHCB) | Brazil, ES, Santa Teresa | MN480353 |
| <i>Vriesea longiscapa</i> Ule | 717/TM717 | T.M. Machado et al. 717 (BHCB) | Brazil, RJ, Paraty | MN480357 |
| <i>Vriesea longistaminea</i> C.C.Paula & Leme | 455/TM455 | T.M. Machado et al. 455 (BHCB) | Brazil, MG, Mariana | MN534380 |
| <i>Vriesea longistaminea</i> C.C.Paula & Leme | 457/TM457 | T.M. Machado et al. 457 (BHCB) | Brazil, MG, Mariana | MN521417 |
| <i>Vriesea lubbersii</i> (Baker) E.Morren ex Mez | M0285 | (SEL) 1987-0285 | in cultivation | MN534365 |
| <i>Vriesea lutheriana</i> J.R.Grant | M0338 | (SEL) 2015-0338 | in cultivation | MN480385 |
| <i>Vriesea macrostachya</i> (Bello) Mez | M0484 | (SEL) 1992-0484 | Puerto Rico, Toro Negro State Forest | MN521444 |
| <i>Vriesea marceloi</i> Versieux & T. Machado | 505/TM505 | T.M. Machado et al. 505 (BHCB) | Brazil, MG, Catas Altas | MN521412 |
| <i>Vriesea marceloi</i> Versieux & T. Machado | 510/TM510 | T.M. Machado et al. 510 (BHCB) | Brazil, MG, Catas Altas | – |
| <i>Vriesea medusa</i> Versieux | 535/TM535 | T.M. Machado et al. 535 (BHCB) | Brazil, MG, São Gonçalo do Rio Preto | – |
| <i>Vriesea medusa</i> Versieux | 538/TM538 | T.M. Machado et al. 538 (BHCB) | Brazil, MG, São Gonçalo do Rio Preto | MN480369 |

| | | | | |
|--|-------------|------------------------------------|--------------------------------------|----------|
| <i>Vriesea medusa</i> Versieux | 547/TM547 | T.M. Machado et al. 547 (BHCB) | Brazil, MG, Santo Antônio do Itambé | – |
| <i>Vriesea medusa</i> Versieux | 550/TM550 | T.M. Machado et al. 550 (BHCB) | Brazil, MG, Santo Antônio do Itambé | MN521442 |
| <i>Vriesea minarum</i> L.B.Sm. | 450/TM450 | T.M. Machado et al. 450 (BHCB) | Brazil, MG, Mariana | – |
| <i>Vriesea minarum</i> L.B.Sm. | 453/TM453 | T.M. Machado et al. 453 (BHCB) | Brazil, MG, Mariana | – |
| <i>Vriesea minor</i> (L.B.Sm.) Leme | 533/TM533 | T.M. Machado et al. 533 (BHCB) | Brazil, MG, São Gonçalo do Rio Preto | MN521429 |
| <i>Vriesea minor</i> (L.B.Sm.) Leme | 563/TM563 | T.M. Machado et al. 563 (BHCB) | Brazil, MG, Alvarenga | MN534376 |
| <i>Vriesea minutiflora</i> Leme | 731/TM731 | T.M. Machado et al. 731 (BHCB) | Brazil, BA, Camacã | MN480372 |
| <i>Vriesea modesta</i> Mez | M0170 | (SEL) 1996-0170 | Brazil | MN480383 |
| <i>Vriesea morrenii</i> Wawra | 659/TM659 | T.M. Machado et al. 659 (BHCB) | Brazil, ES, Santa Teresa | MN521439 |
| <i>Vriesea morrenii</i> Wawra | RJ369 | (RBvb) 369 | Brazil, RJ, Petrópolis | MN534369 |
| <i>Vriesea nanuzae</i> Leme | 478/TM478 | T.M. Machado et al. 478(BHCB) | Brazil, MG, Diamantina | MN534391 |
| <i>Vriesea nanuzae</i> Leme | 480/TM480 | T.M. Machado et al. 480 (BHCB) | Brazil, MG, Diamantina | – |
| <i>Vriesea nanuzae</i> Leme | 544/TM544 | T.M. Machado et al. 544 (BHCB) | Brazil, MG, São Gonçalo do Rio Preto | – |
| <i>Vriesea nanuzae</i> Leme | 545/TM545 | T.M. Machado et al. 545 (BHCB) | Brazil, MG, São Gonçalo do Rio Preto | MN521419 |
| <i>Vriesea neoglutinosa</i> Mez | 502/TM502 | T.M. Machado et al. 502 (BHCB) | Brazil, ES, Pancas | – |
| <i>Vriesea neoglutinosa</i> Mez | LF605 | L. Fonseca et al. 605 (BHCB) | Brazil, MG, Teófilo Otoni | MN480370 |
| <i>Vriesea neoglutinosa</i> Mez | 719/TM719 | T.M. Machado et al. 719 (BHCB) | Brazil, RJ, Paraty | MN480415 |
| <i>Vriesea oligantha</i> (Baker) Mez | 452/TM452 | T.M. Machado et al. 452 (BHCB) | Brazil, MG, Mariana | MN521409 |
| <i>Vriesea oligantha</i> (Baker) Mez | 477/TM477 | T.M. Machado et al. 477 (BHCB) | Brazil, MG, Diamantina | MN480390 |
| <i>Vriesea oxapampae</i> Rauh | W19 | (WU-HBV) B83-1 | Peru | MN480361 |
| <i>Vriesea pabstii</i> McWilliams & L.B.Sm. | W20 | (WU-HBV) B12/96 | Brazil | MN480348 |
| <i>Vriesea paratiensis</i> E.Pereira | 591/TM591 | T.M. Machado et al. 591 (BHCB) | Brazil, RJ, Teresópolis | MN480413 |
| <i>Vriesea pauperrima</i> E.Pereira | P01 | (P) living collection | in cultivation | MN480406 |
| <i>Vriesea penduliflora</i> L.B.Sm. | RJ544 | (RBvb) 544 | Brazil, MG, Lima Duarte | MN521433 |
| <i>Vriesea philippocoburgii</i> Wawra | 568/TM568 | T.M. Machado et al. 568 (BHCB) | Brazil, RJ, Teresópolis | – |
| <i>Vriesea philippocoburgii</i> Wawra | 580/TM580 | T.M. Machado et al. 580 (BHCB) | Brazil, SP, Santo André | – |
| <i>Vriesea philippocoburgii</i> Wawra | 592/TM592 | T.M. Machado et al. 592 (BHCB) | Brazil, RJ, Teresópolis | MN534385 |
| <i>Vriesea platzmannii</i> E.Morren | RJ1478 | (RBvb) 1478 | Brazil, São Paulo | MN480371 |
| <i>Vriesea poenulata</i> (Baker) E.Morren ex Mez | 678/TM678 | T.M. Machado et al. 678 (BHCB) | Brazil, ES, Santa Teresa | – |
| <i>Vriesea poenulata</i> (Baker) E.Morren ex Mez | IK135 | Kessous, I. et al. 135 (R) | Brazil, ES, Santa Teresa | MN534373 |
| <i>Vriesea poenulata</i> (Baker) E.Morren ex Mez | M0308 | (SEL) 1986-0308 | Brazil | MN534378 |
| <i>Vriesea procera</i> (Mart. ex Schult.f.) Wittm. | 720/TM720 | T.M. Machado et al. 720 (BHCB) | Brazil, RJ, Paraty | MN480411 |
| <i>Vriesea procera</i> (Mart. ex Schult.f.) Wittm. | 649/TM649 | T.M. Machado et al. 649 (BHCB) | Brazil, MG, Jequitinhonha | – |
| <i>Vriesea procera</i> (Mart. ex Schult.f.) Wittm. | 651/TM651 | T.M. Machado et al. 651 (BHCB) | Brazil, BA, Cumuruxatiba | MN534367 |
| <i>Vriesea procera</i> (Mart. ex Schult.f.) Wittm. | 651B/TM651B | T.M. Machado et al. 651B (BHCB) | Brazil, BA, Cumuruxatiba | MN480410 |

| | | | | |
|---|-----------|--|---|----------|
| <i>Vriesea procera</i> var. <i>tenuis</i> L. B. Sm. | 652/TM652 | T.M. Machado et al. 652 (BHCB) | Brazil, BA, Cumuruxatiba | MN480412 |
| <i>Vriesea pseudoatra</i> Leme | 686/TM686 | T.M. Machado et al. 686 (BHCB) | Brazil, RJ, Teresópolis | MN521437 |
| <i>Vriesea pulchra</i> Leme & L.Kollmann | 729/TM729 | T.M. Machado et al. 729 (BHCB) | Brazil, BA, Camacã | MN521427 |
| <i>Vriesea racinae</i> L.B.Sm. | W21 | (WU-HBV) B12/11 | Brazil, Espírito Santo | MN480324 |
| <i>Vriesea regnellii</i> Mez | RJ989 | (RBvb) 989 | Brazil, MG, Caldas | MN480397 |
| <i>Vriesea rhodostachys</i> L.B.Sm. | M0421 | (SEL) 2000-0421 | Brazil, ES, Domingos Martins | MN480352 |
| <i>Vriesea rhodostachys</i> L.B.Sm. | RJ1366 | (RBvb) 1366 | Brazil, BA, Arataca | MN480351 |
| <i>Vriesea robertoseidelii</i> W.Weber | RJ536 | (RBvb) 536 | Brazil, ES, Linhares | – |
| <i>Vriesea rodigasiana</i> E.Morren | M0468 | (SEL) 1995-0468 | Brazil, RJ, Paraty | MN480409 |
| <i>Vriesea rodigasiana</i> E.Morren | RJ360 | (RBvb) 360 | Brazil, MG, Lima Duarte | MN521438 |
| <i>Vriesea roethii</i> W.Weber | 565/TM565 | T.M. Machado et al. 565 (BHCB) | Brazil, RJ, Teresópolis | MN521416 |
| <i>Vriesea rubyae</i> E.Pereira | M266 | (SEL) 1983-0266 | Brazil | MN534383 |
| <i>Vriesea rubyae</i> E.Pereira | RJ138 | (RBvb) 138 | Brazil, RJ, Petrópolis | MN534366 |
| <i>Vriesea ruschii</i> L.B.Sm. | 656/TM656 | T.M. Machado et al. 656 (BHCB) | Brazil, ES, Santa Teresa | MN521403 |
| <i>Vriesea sanctaparecidae</i> Leme | 562/TM562 | T.M. Machado et al. 562 (BHCB) | Brazil, MG, Alvarenga | MN534377 |
| <i>Vriesea sanctaparecidae</i> Leme | 564/TM564 | T.M. Machado et al. 564 (BHCB) | Brazil, MG, Alvarenga | MN534379 |
| <i>Vriesea saundersii</i> (Carrière) E.Morren ex Mez | W23 | (WU-HBV) B10/40-1 T.M. Machado et al. | Brazil Brazil, MG, São João Del Rey | MN480349 |
| <i>Vriesea saxicola</i> L. B. Sm. | 571/TM571 | 571 (BHCB) T.M. Machado et al. | | MN534381 |
| <i>Vriesea scalaris</i> E.Morren | 710/TM710 | 710 (BHCB) T.M. Machado et al. | Brazil, RJ, Paraty Brazil, SP, Wecelau Brás | MN480346 |
| <i>Vriesea sceptrum</i> Mez | 529/TM529 | 529 (BHCB) | | – |
| <i>Vriesea schwackeana</i> Mez | M0107 | (SEL) 1998-0107 | Brazil | MN521405 |
| <i>Vriesea simplex</i> (Vell.) Beer | IK128 | Kessous, I. et al. 128 (R) | Brazil, ES, Santa Teresa | MN480364 |
| <i>Vriesea simplex</i> (Vell.) Beer | W02 | (WU-HBV) B98/B65-2 | in cultivation | – |
| <i>Vriesea simulans</i> Leme | 531/TM531 | T.M. Machado et al. 531 (BHCB) | Brazil, MG, Diamantina | MN534382 |
| <i>Vriesea simulans</i> Leme | 743/TM743 | T.M. Machado et al. 743 (BHCB) | Brazil, MG, Capivari | MN480394 |
| <i>Vriesea sincorana</i> Mez | RJ947 | (RBvb) 947 | Brazil, BA, Rio de Contas | – |
| <i>Vriesea speckmaieri</i> W. Till | W24 | (WU-HBV) 0014027 T.M. Machado et al. | Venezuela, Carabobo | MN480408 |
| <i>Vriesea stricta</i> L.B. Smith | 458/TM458 | 458 (BHCB) T.M. Machado et al. | Brazil, MG, Mariana | – |
| <i>Vriesea stricta</i> L.B. Smith | 470/TM470 | 470 (BHCB) T.M. Machado et al. | Brazil, MG, Mariana | MN521426 |
| <i>Vriesea stricta</i> L.B. Smith | 475/TM475 | 475 (BHCB) | Brazil, MG, Santana do Riacho | – |
| <i>Vriesea sucrei</i> L.B.Sm.& Read | P03 | (P) living collection | in cultivation | MN480405 |
| <i>Vriesea sucrei</i> L.B.Sm.& Read | RJ1979 | (RBvb) 1979 | in cultivation | MN534375 |
| <i>Vriesea sucrei</i> L.B.Sm.& Read | W25 | (WU-HBV) B196/95 | Brazil | MN480400 |
| <i>Vriesea taritubensis</i> Pereira & I.A.Penna | 711 | T.M. Machado et al. 711 (BHCB) | Brazil, RJ, Paraty | MN480363 |
| <i>Vriesea teresopolitana</i> Leme | RJ1346 | (RBvb) 1346 T.M. Machado et al. | Brazil, RJ, Teresópolis | MN521431 |
| <i>Vriesea thyrsoidea</i> Mez | 594/TM594 | 594 (BHCB) | Brazil, RJ, Teresópolis | MN521408 |

| | | | | |
|---|-----------|--|---------------------------------|----------|
| <i>Vriesea thyrsoidea</i> Mez | 681/TM681 | T.M. Machado et al. 681 (BHCB) | Brazil, RJ, Teresópolis | MN480402 |
| <i>Vriesea tijucana</i> E.Pereira | RJ480 | (RBvb) 480 | Brazil, ES, Domingos Martins | MN521445 |
| <i>Vriesea triangularis</i> Reitz | RJ1343 | (RBvb) 1343 | Brazil, Rio Grande do Sul | — |
| <i>Vriesea unilateralis</i> (Baker) Mez | 581/TM581 | T.M. Machado et al. 581 (BHCB) | Brazil, SP, Santo André | MN521411 |
| <i>Vriesea vagans</i> (L.B.Sm.) L.B.Sm. | 577/TM577 | T.M. Machado et al. 577 (BHCB) | Brazil, RJ, Itatiaia | — |
| <i>Vriesea vellozicola</i> Leme & J.A.Siquera | 501/TM501 | T.M. Machado et al. 501 (BHCB) | Brazil, ES, Pancas | — |
| <i>Vriesea vidalii</i> L.B.Sm. & Handro | 596/TM | T.M. Machado et al. 596 (BHCB) | Brazil, RJ, Teresópolis | MN521436 |
| <i>Vriesea warmingii</i> E.Morren | W27 | (WU-HBV) B362/96 | Brazil | MN480360 |
| <i>Vriesea wawraea</i> Antoine | W28 | (WU-HBV) B01B87-2 | Brazil | MN480359 |
| <i>Vriesea zamorensis</i> (L.B.Sm.) L.B.Sm. | P05 | (P) living collection | in cultivation | MN480328 |
| <i>Vriesea zamorensis</i> (L.B.Sm.) L.B.Sm. | W29 | (WU-HBV) B12/31-1 | Ecuador, Zamora | — |
| <i>Vriesea zonata</i> Leme & J.A.Siqueira | RJ2118 | (RBvb) 2118 | in cultivation | MN480373 |
| <i>Werauhia gladioliflora</i> (H.Wendland) J.R.Grant | W30 | (WU-HBV) Anbau 583 (WU-HBV) B97B277- 1 | Costa Rica, Arenal Volcano | MN480341 |
| <i>Werauhia tarmaensis</i> (Rauh) J.R.Grant | W32 | | Peru, Junin | MN480342 |
| <i>Werauhia werckleana</i> (Mez) J.R. Grant | W33 | (WU-HBV) B12/30-1 | Mexico, Chiapas | MN480398 |
| <i>Zizkaea tuerckheimii</i> (Mez) W. Till & Barfuss | W26 | (WU-HBV) B01B8- 1/17055 | Dominican Republic, La Vega | MN480330 |