

# Supporting Information

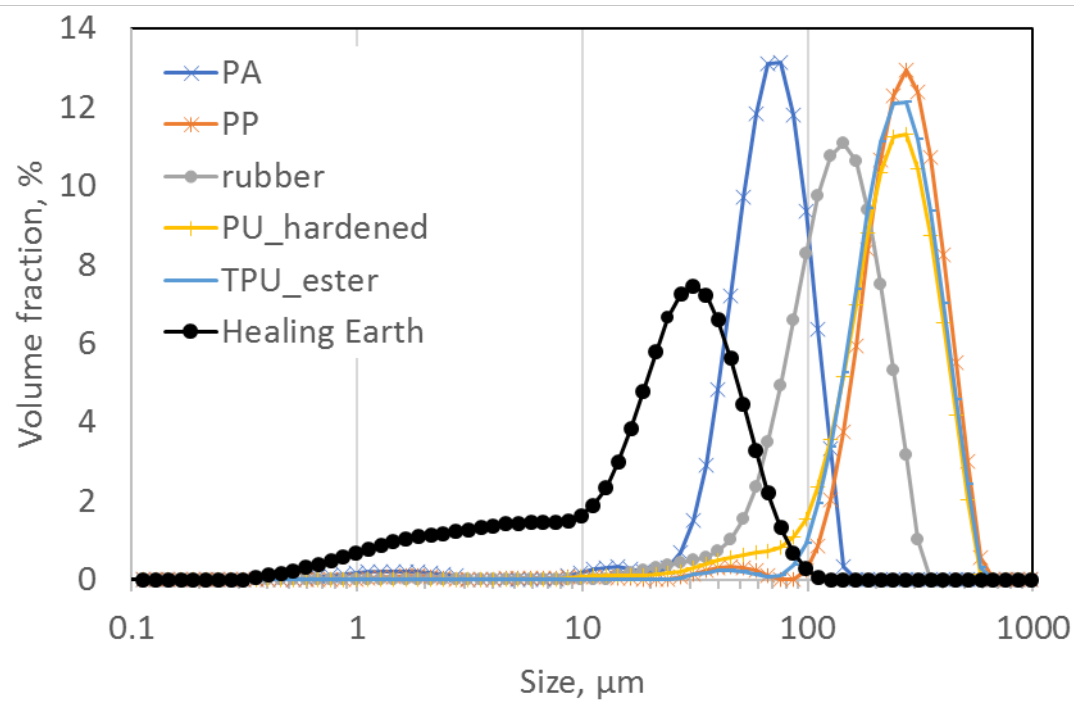


Figure SI\_1 Size distribution determined by laser diffraction

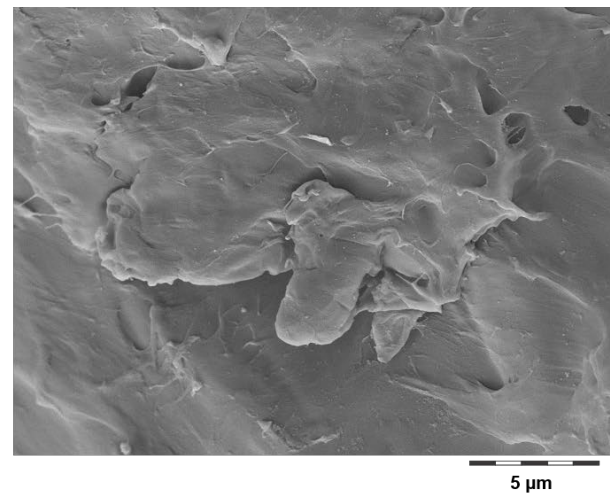
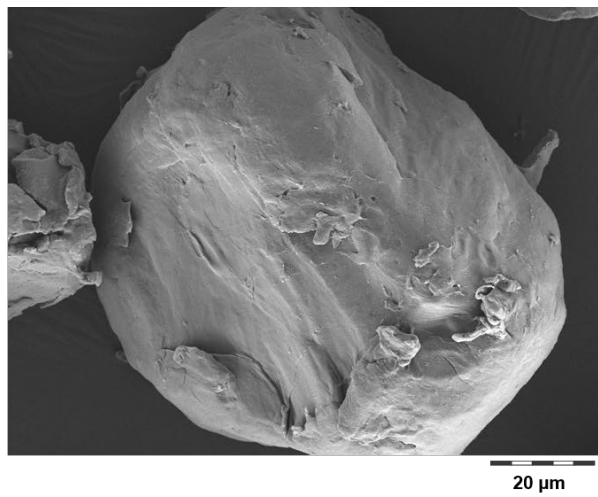
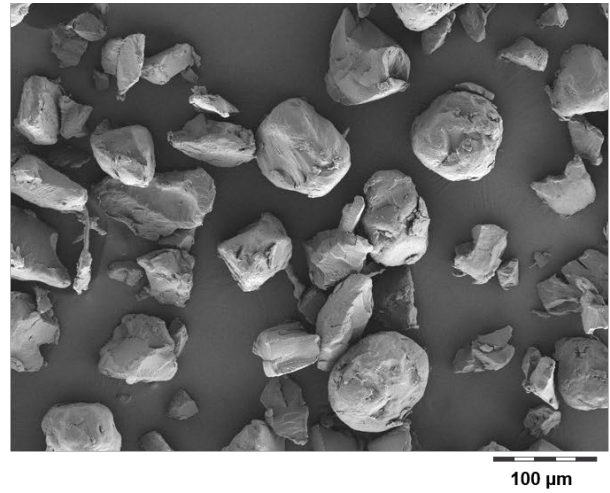
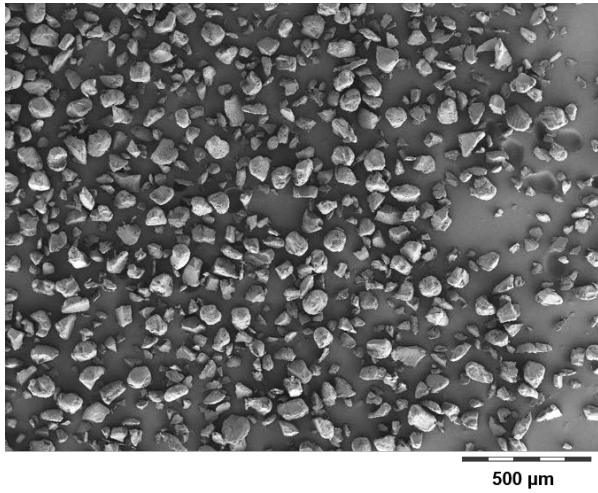


Figure SI\_2 Morphology of PA6 particles, by SEM

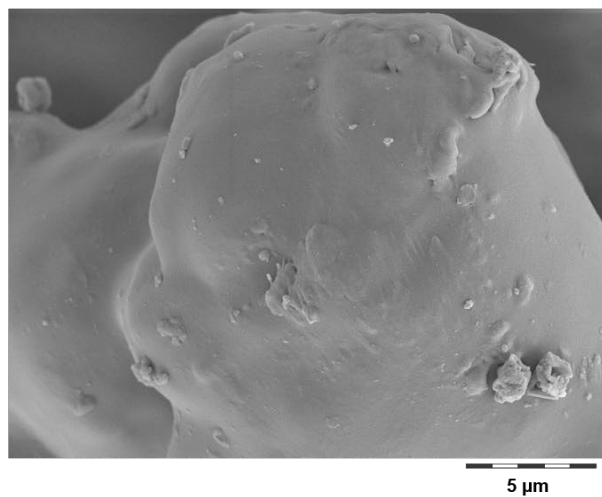
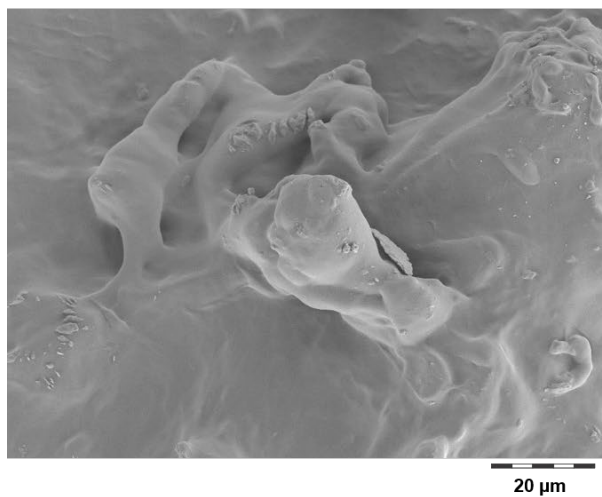
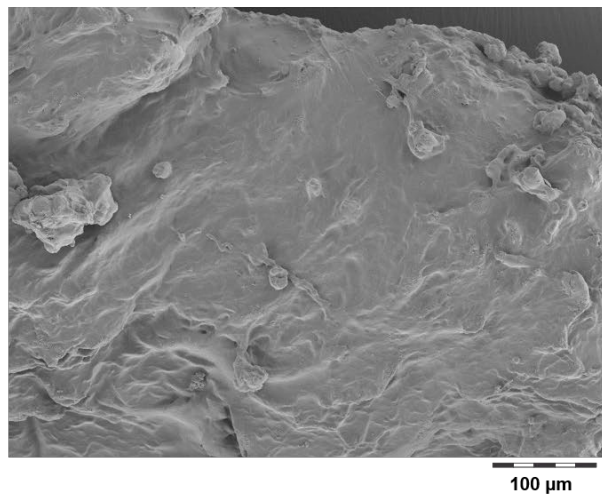
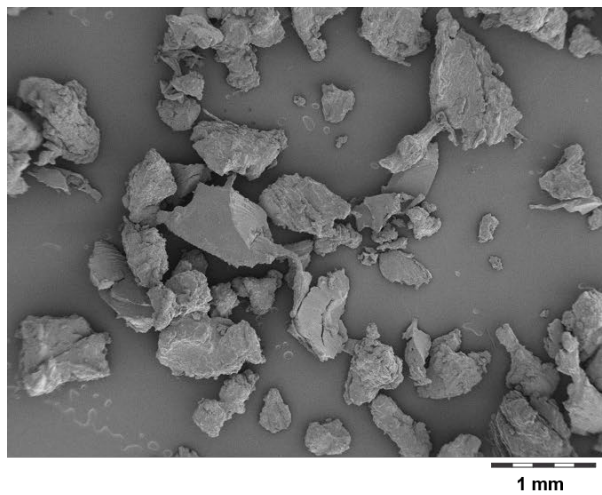


Figure SI\_3 Morphology of TPU\_ester particles, by SEM

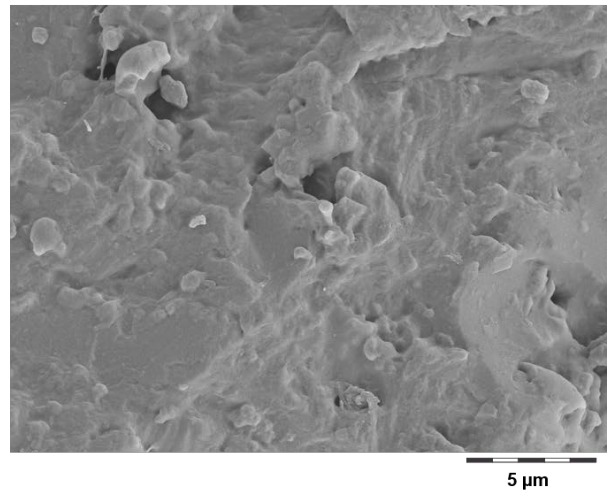
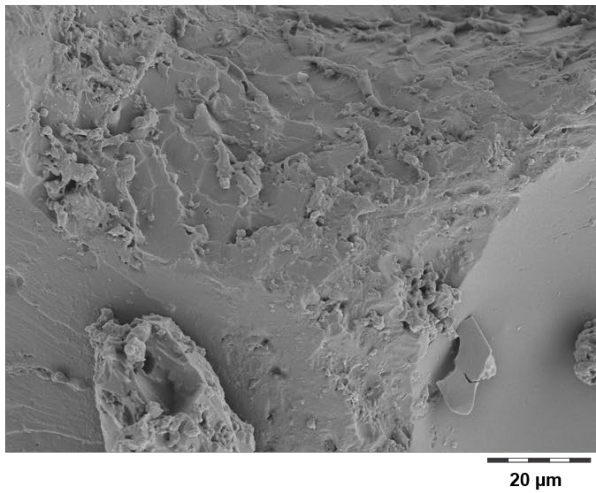
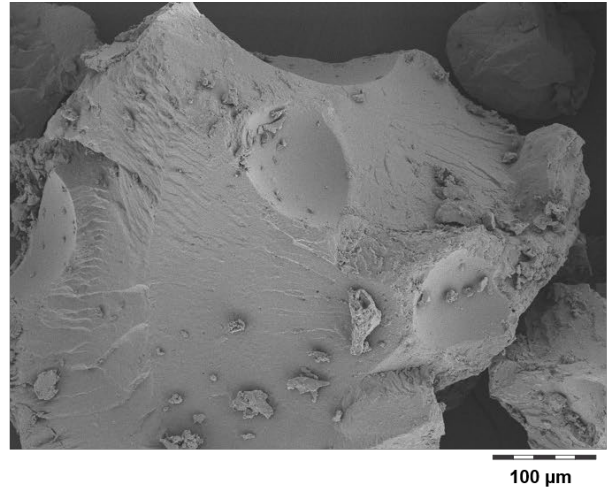
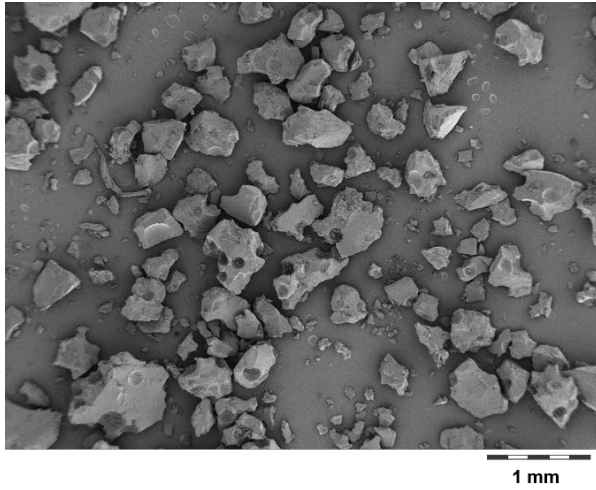


Figure SI\_4 Morphology of PU\_hardened particles, by SEM



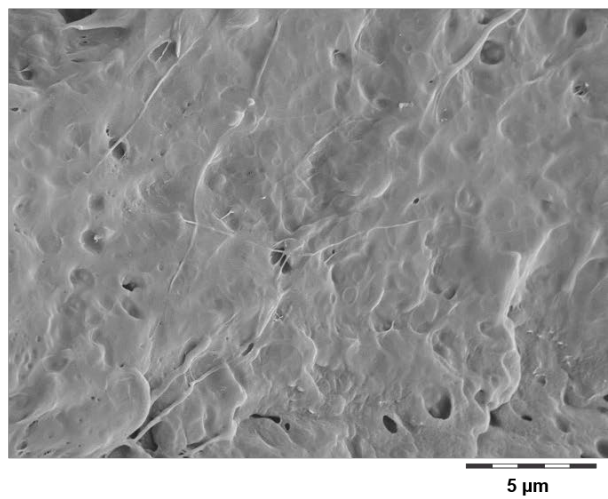
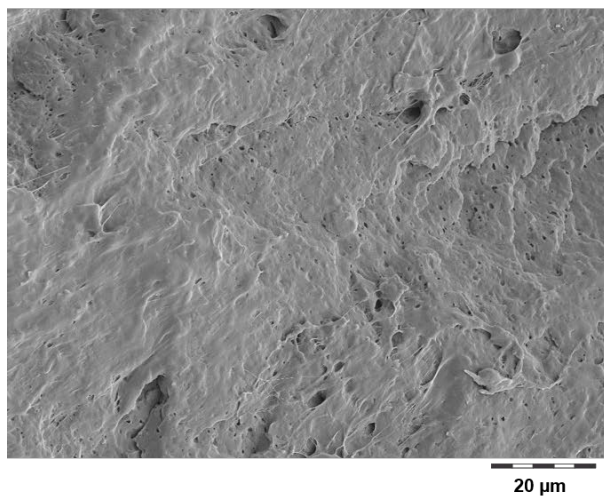
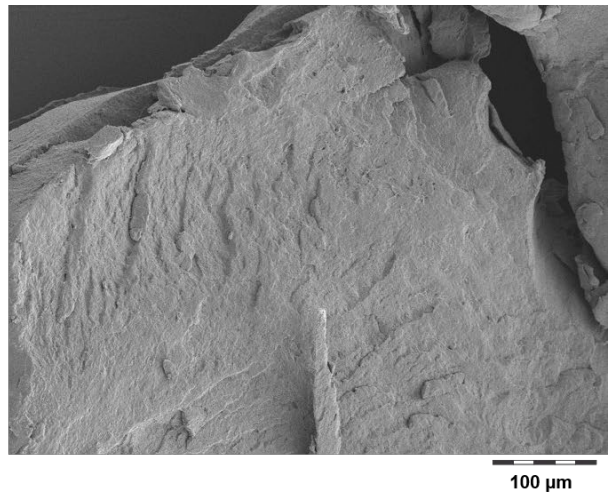
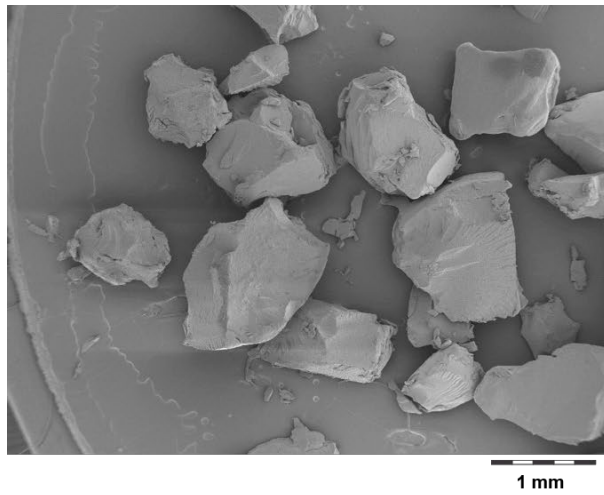


Figure SI\_5 Morphology of PP particles, by SEM

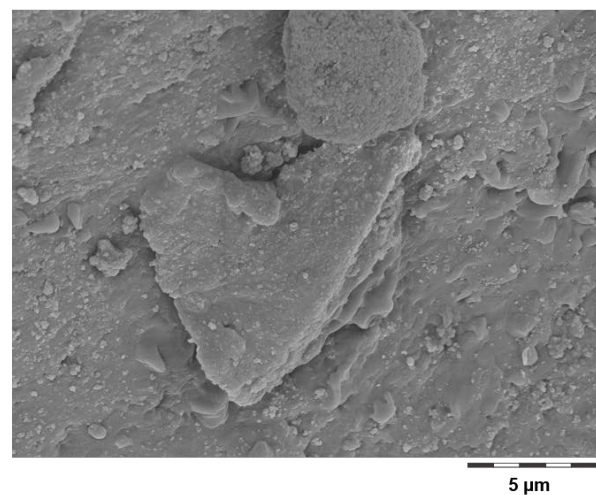
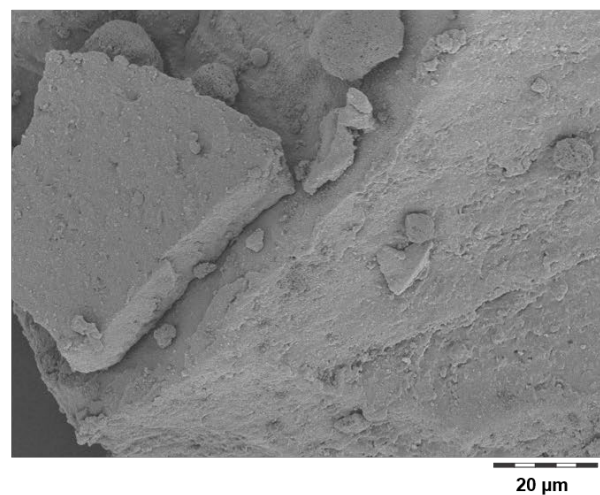
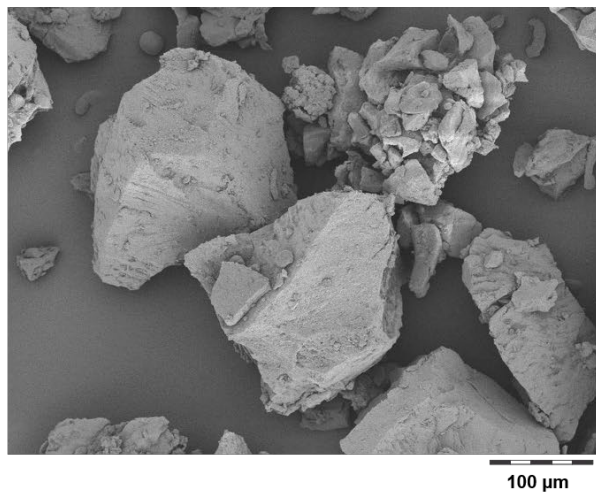
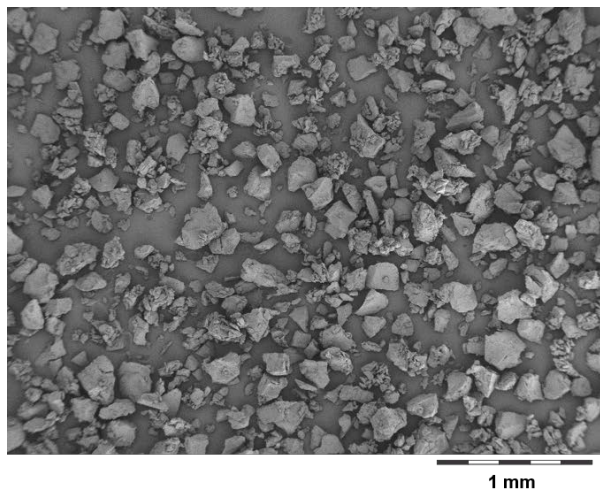


Figure SI\_6 Morphology of tire rubber particles, by SEM



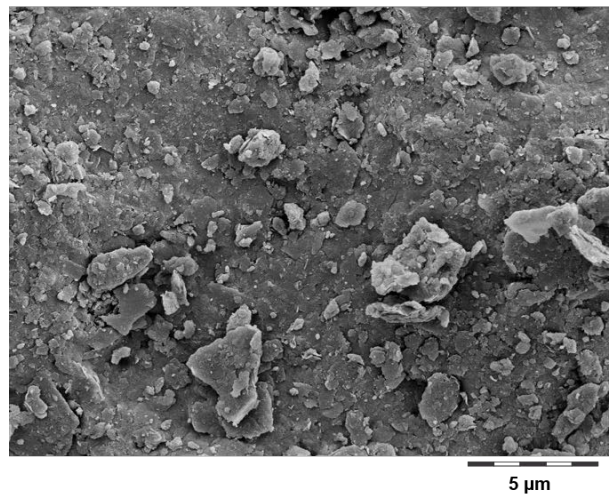
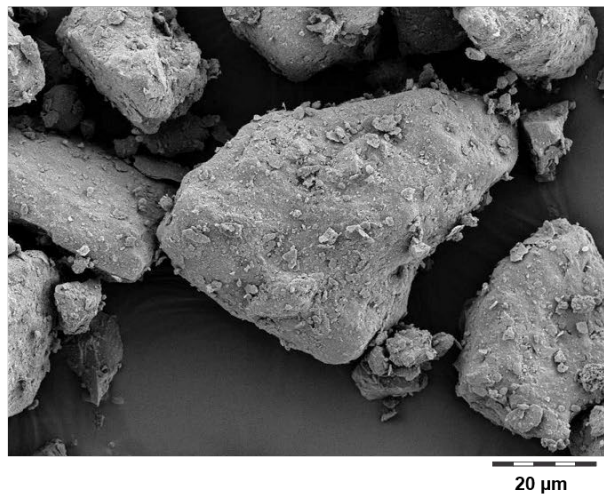
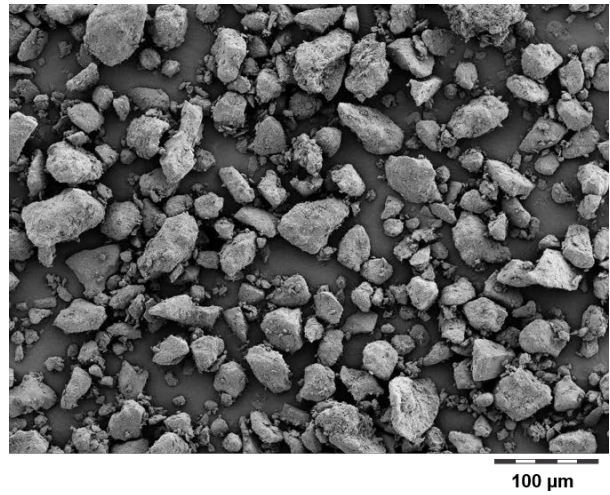
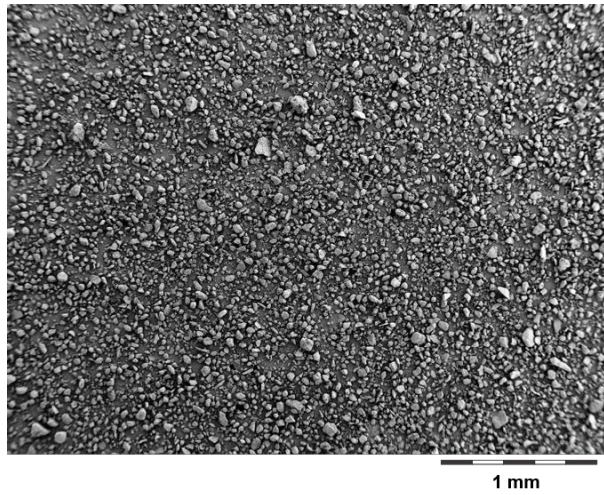


Figure SI\_7 Morphology of healing earth particles, by SEM

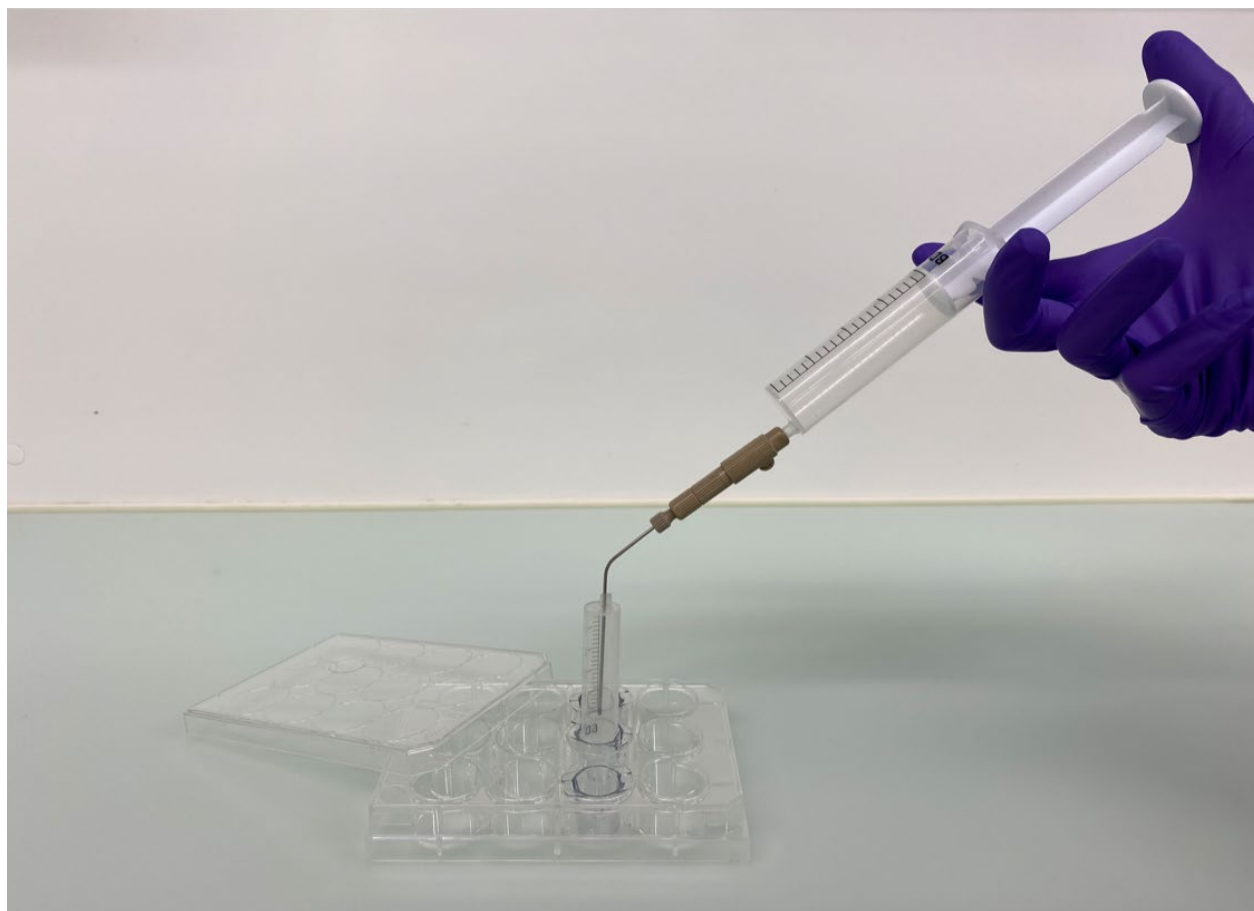


Figure SI\_8: Photograph of the nebulization apparatus

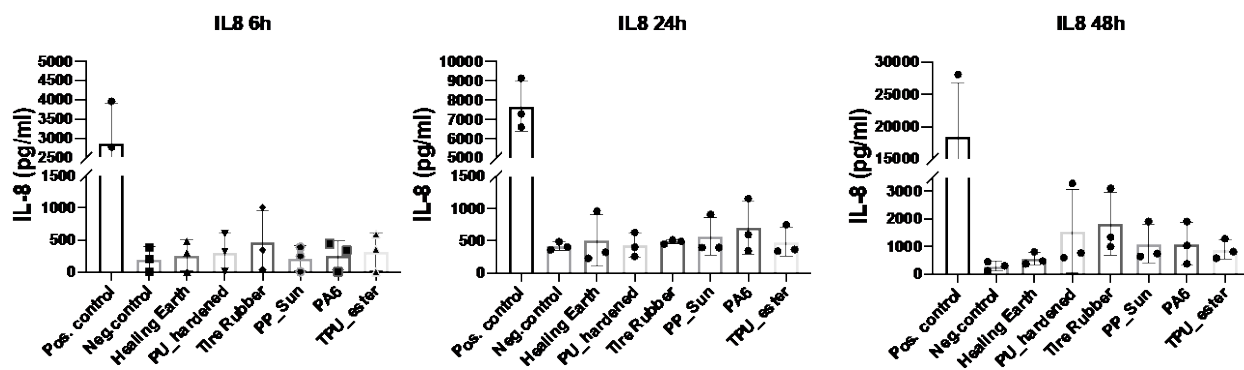


Figure SI\_9: (Pro-)inflammatory response of IL-8 after exposure to MPs and healing earth for 6, 24 and 48h.



