

Supporting Information for Fabian *et al.* "Genome-wide patterns of latitudinal differentiation among populations of *Drosophila melanogaster* from North America"

Additional supporting information may be found in the online version of this article.

Table of Contents for Supporting Information

Table S1 Average nucleotide diversity π	3
Table S2 Average scaled population mutation rate θ_W.....	4
Table S3 Average pairwise F_{ST} values.....	5
Table S4 Average pairwise F_{ST} in- and outside inversions.....	6
Table S5 (separate Excel file) Top candidate genes.....	7
Table S6 Proportion of candidate SNPs within inversions.....	8
Table S7 (separate Excel file) Genome annotations of candidate genes	9
Table S8 (separate Excel file) Gene ontology (GO) analysis of candidates.....	10
Table S9 (separate Excel file) Overlap between FM candidate genes and those identified by Kolaczowski <i>et al.</i> (2011).....	11
Fig. S1 Average coverage of pool-seq samples.....	12
Fig. S2 Average scaled population mutation rate θ_W.....	13
Fig. S3 Frequency of the major cosmopolitan inversion <i>In(3R)Payne</i>.....	14
Fig. S4 Overlap of candidate genes among population comparisons.....	15
Fig. S5 Decay of statistical significance around candidate SNPs.....	16-21
Appendix S1 Examples of candidate genes in the insulin/insulin-like growth factor (IIS) and target of rapamycin (TOR) signaling pathways.....	22-28
Appendix S2 Examples of candidate genes involved in ecdysone biosynthesis and signaling.....	29-35
Appendix S3 Examples of candidate genes involved in nuclear hormone receptor (NHR) signaling and other endocrine pathways.....	36-38
Appendix S4 Examples of candidate genes involved in lipid metabolism.....	39-41

Appendix S5 Examples of candidate genes involved in innate immunity (Toll/Imd signaling).....	42-47
Appendix S6 Examples of candidate genes involved in epidermal growth factor (EGFR) signaling.....	48-50
App. S7 Examples of candidate genes involved in JAK/STAT signaling.....	51-54
App. S8 Examples of candidate genes involved in TGF-β/BMP signaling....	55-57
Appendix S9 Examples of candidate genes involved in torso signaling.....	58-60
App. S10 Examples of candidate genes involved in circadian rhythms.....	61-64
App. S11 Examples of candidate genes involved in learning and memory....	65-69
Appendix S12 Examples of some transcription factor candidate genes.....	70-73
Appendix S13 (separate folder with word files and Python scripts) Folder containing a description of the bioinformatic analysis pipeline, including Python scripts.....	74
Appendix S14 (separate folder with individual pdf files) Folder containing plots for each clinal (“plus_plus”) candidate gene, showing the changes in allele frequency for the candidate gene as a function of latitude.....	75

Table S1 Average nucleotide diversity π . Average π (average across SNP-wise π values) for each population and chromosomal arm. SE, standard error of the mean. Levels not connected by same letter are significantly different in a two-way ANOVA on rank-transformed means followed by a Tukey HSD posthoc test (details not shown). While chromosomal arms differed significantly in π , populations did not. Note, however, that the test of population variation, using ranks of means and only three populations, is not very powerful. To further examine whether populations differ in π we therefore applied a Kruskal-Wallis rank sum test on average π values estimated in non-overlapping 200 kb windows across the entire genome. Populations differed significantly in π , with Florida exhibiting higher diversity than Pennsylvania and Maine, while Pennsylvania and Maine did not differ from each other (Kruskal-Wallis $\chi^2 = 16.8$, $df = 2$, $P < 0.001$; followed by pairwise Wilcoxon rank sum posthoc tests, details not shown).

Chromosome	FLORIDA ^A		PENNSYLVANIA ^A		MAINE ^A	
	π	SE	π	SE	π	SE
X^A	0.0041	9.3×10^{-6}	0.0039	9.1×10^{-6}	0.0039	9.2×10^{-6}
$2L^B$	0.0075	1.2×10^{-5}	0.0071	1.2×10^{-5}	0.0070	1.2×10^{-5}
$2R^C$	0.0062	1.2×10^{-5}	0.0060	1.1×10^{-5}	0.0062	1.2×10^{-5}
$3L^C$	0.0066	1.1×10^{-5}	0.0060	1.1×10^{-5}	0.0060	1.1×10^{-5}
$3R^D$	0.0059	9.6×10^{-6}	0.0050	8.8×10^{-6}	0.0050	8.9×10^{-6}

Table S2 Average scaled population mutation rate θ_W . Average θ_W (average across SNP-wise θ_W values) for each population and chromosomal arm. SE, standard error of the mean. Levels not connected by same letter are significantly different in a two-way ANOVA on rank-transformed data followed by a Tukey HSD posthoc test (details not shown). While chromosomal arms differed significantly in θ_W , populations did not. Note, however, that the test of population variation, using ranks of means and only three populations, is not very powerful. To further examine whether populations differ in θ_W we therefore applied a Kruskal-Wallis rank sum test on average θ_W values estimated in non-overlapping 200 kb windows across the entire genome. Populations differed significantly in θ_W , with Florida exhibiting higher diversity than Pennsylvania and Maine, while Pennsylvania and Maine did not differ from each other (Kruskal-Wallis $\chi^2 = 22.3$, $df = 2$, $P < 0.001$; followed by pairwise Wilcoxon rank sum posthoc tests, details not shown).

Chromosome	FLORIDA ^A		PENNSYLVANIA ^A		MAINE ^A	
	θ_W	SE	θ_W	SE	θ_W	SE
X^A	0.0044	8.6×10^{-6}	0.0041	8.3×10^{-6}	0.0040	8.4×10^{-6}
$2L^B$	0.0077	1.1×10^{-5}	0.0072	1.1×10^{-5}	0.0071	1.1×10^{-5}
$2R^C$	0.0064	1.1×10^{-5}	0.0062	1.0×10^{-5}	0.0064	1.1×10^{-5}
$3L^C$	0.0070	1.0×10^{-5}	0.0062	9.6×10^{-6}	0.0062	9.6×10^{-5}
$3R^D$	0.0061	8.7×10^{-6}	0.0052	8.0×10^{-6}	0.0052	8.1×10^{-6}

Table S3 Average pairwise F_{ST} values. Average pairwise F_{ST} values (average across SNP-wise F_{ST} values) for each population comparison and chromosomal arm. SE, standard error of the mean. Levels not connected by same letter are significantly different in a two-way ANOVA on rank-transformed data followed by a Tukey HSD posthoc test. See text for further details.

Chromosome	Florida - Maine ^A		Florida - Pennsylvania ^A		Pennsylvania - Maine ^B	
	F_{ST}	SE	F_{ST}	SE	F_{ST}	SE
X^A	0.0380	8.4×10^{-5}	0.0381	8.3×10^{-5}	0.0307	8.0×10^{-5}
$2L^A$	0.0430	6.8×10^{-5}	0.0401	6.1×10^{-5}	0.0248	4.5×10^{-5}
$2R^A$	0.0370	6.4×10^{-5}	0.0365	6.2×10^{-5}	0.0253	5.3×10^{-5}
$3L^A$	0.0404	6.6×10^{-5}	0.0393	6.3×10^{-5}	0.0262	5.0×10^{-5}
$3R^A$	0.0633	1.0×10^{-4}	0.0606	9.8×10^{-5}	0.0258	4.8×10^{-5}

Table S4 Average pairwise F_{ST} in- and outside inversions. Average pairwise F_{ST} was estimated in- and outside four major cosmopolitan inversions for each population comparison, using 1 kb non-overlapping windows. “ F_{ST} in”: F_{ST} inside the inversion; “ F_{ST} out”, F_{ST} of the chromosomal arm outside the inversion. Significant differences between “ F_{ST} in” and “ F_{ST} out” in boldface (Wilcoxon Rank Sum Test, $\alpha < 0.01$). SE, standard error of the mean.

Inversion	Florida – Maine				Florida - Pennsylvania				Pennsylvania - Maine			
	F_{ST} in	SE	F_{ST} out	SE	F_{ST} in	SE	F_{ST} out	SE	F_{ST} in	SE	F_{ST} out	SE
<i>In(2L)t</i>	0.0448	2.0×10^{-4}	0.0484	2.9×10^{-4}	0.0406	1.8×10^{-4}	0.0441	2.4×10^{-4}	0.0263	1.3×10^{-4}	0.0251	1.5×10^{-4}
<i>In(2R)NS</i>	0.0368	2.5×10^{-4}	0.0394	1.9×10^{-4}	0.0359	2.3×10^{-4}	0.0384	1.7×10^{-4}	0.0257	2.0×10^{-4}	0.0261	1.3×10^{-4}
<i>In(3L)P</i>	0.0426	2.0×10^{-4}	0.0462	3.4×10^{-4}	0.0417	1.9×10^{-4}	0.0441	3.1×10^{-4}	0.0274	1.3×10^{-4}	0.0271	1.9×10^{-4}
<i>In(3R)P</i>	0.0880	4.8×10^{-4}	0.0623	2.9×10^{-4}	0.0841	4.7×10^{-4}	0.0609	2.9×10^{-4}	0.0280	1.9×10^{-4}	0.0278	1.2×10^{-4}

Please see separate Excel (.xls) file:

Table S5 (Excel) Top candidate genes. Sheets FM (comparison Florida - Maine); FP (comparison Florida - Pennsylvania); PM (comparison Pennsylvania - Maine) show mean F_{ST} values for each candidate gene calculated using (a) candidate SNPs only and (b) all polymorphic SNPs. SE, standard error of the mean. Sheets A - G show the candidate genes in the different intersections of the Venn diagram shown in Fig. S4.

Table S6 Proportion of candidate SNPs within inversions. Enrichment was tested using one-sided FETs, with significant enrichment relative to the rest of the chromosomal arm shown in boldface. ov, overrepresented; un, underrepresented. FM, comparison Florida - Maine; FP, Florida - Pennsylvania; PM, Pennsylvania - Maine.

Inversion	FM	FP	PM
<i>In(2L)t</i>	0.41^{un}	0.45^{un}	0.70
<i>In(2R)NS</i>	0.24^{un}	0.20^{un}	0.19^{un}
<i>In(3L)P</i>	0.84^{ov}	0.82^{ov}	0.79
<i>In(3R)P</i>	0.67^{ov}	0.68^{ov}	0.41

Please see separate Excel (.xls) file:

Table S7 (Excel) Genome annotations of candidate genes. Candidate genes in significantly over- and underrepresented genome annotation categories for each pairwise population comparison. FM, comparison Florida - Maine; FP, Florida - Pennsylvania; PM, Pennsylvania - Maine.

Please see separate Excel (.xls) file:

Table S8 (Excel) Gene ontology (GO) analysis of candidate genes. Gene ontology (GO) analysis of candidate genes for each pairwise population comparison and the clinal ("plus_plus") genes. Columns contain: (1) GO category; (2) average number of genes obtained per simulation (10 million simulations); (3) candidate genes detected for the category; (4) empirical *P*-values; (5) false discovery rate (FDR); (6) total genes with at least one differentiated site; (7) total number of genes known in each category; (8) GO category name; (9) FBgn number of candidate genes detected for the category. FM, comparison Florida - Maine; FP, Florida - Pennsylvania; PM, Pennsylvania - Maine; "Plus_Plus", clinal genes. See text for further details.

Please see separate Excel (.xls) file:

Table S9 (Excel) Overlap between FM candidate genes and those identified by Kolaczowski *et al.* (2011). This table shows the overlap between the candidate genes identified for the endpoints of the North American cline (Florida versus Maine) and the Australian cline (Queensland versus Tasmania; see Kolaczowski *et al.* 2011), using a window-based approach (top 5% of non-overlapping 1 kb windows with highest F_{ST}). Details of the methods are given in the table; also see main text for further details.

Fig. S1 Average coverage of pool-seq samples. Average sequence coverage of Illumina-sequenced pooled samples for each chromosomal arm and population after processing of raw FASTA files. Error bars represent standard deviations (SD). Mean read depth of the euchromatic genome (*X*, *2L*, *2R*, *3L*, *3R*) was 47.4x in Florida, 45.3x in Pennsylvania, and 45.4x in Maine.

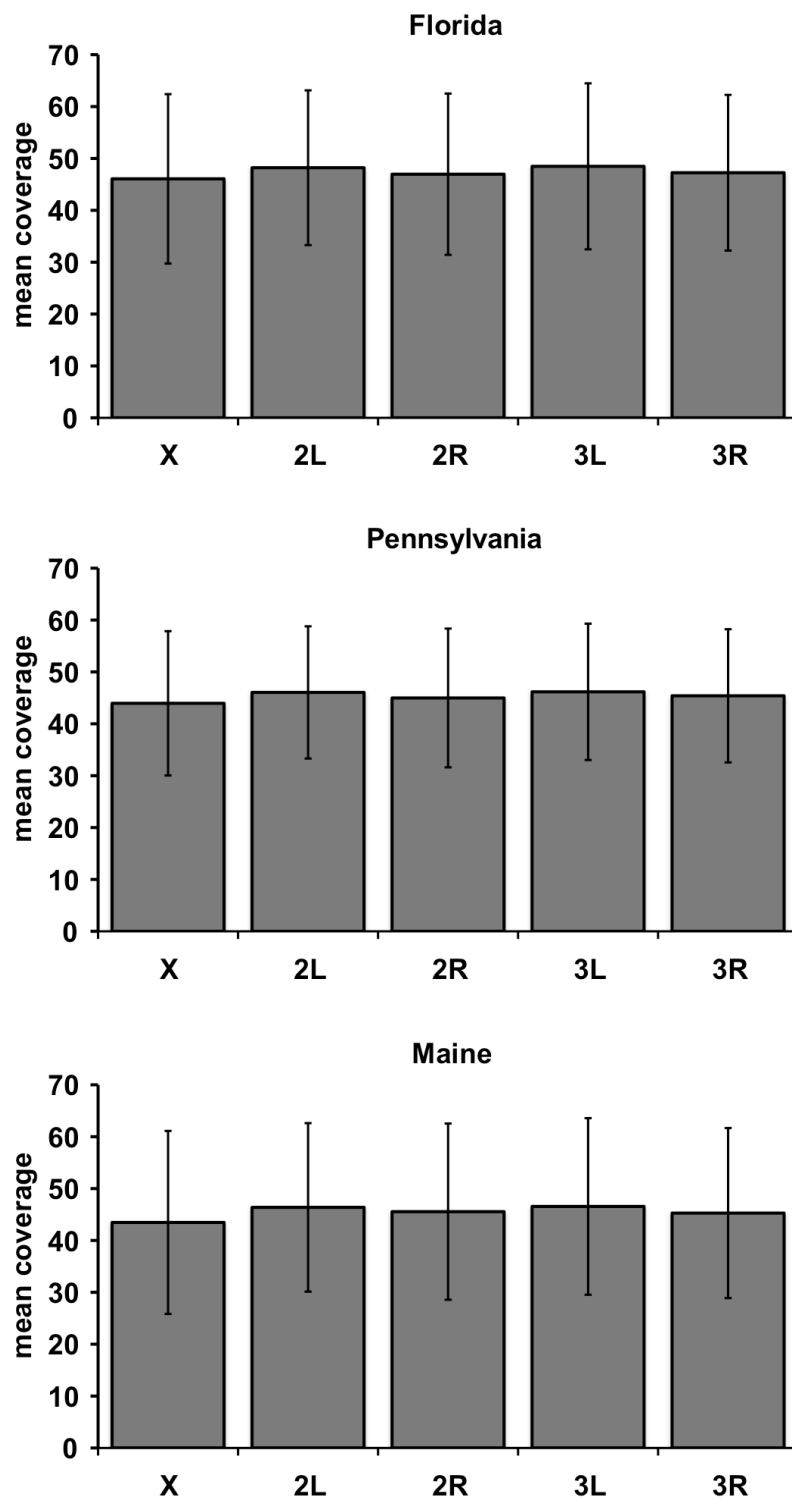


Fig. S2 Average scaled population mutation rate θ_w . Average θ_w was estimated over 200 kb non-overlapping windows and plotted separately for each chromosomal arm. Florida (black line); Pennsylvania (green); and Maine (red). Regions where the line is broken represent windows where the coverage was outside our predefined minimum/maximum coverage interval, i.e. windows with < 60% of the SNPs fulfilling our coverage criteria. The grey boxes indicate the approximate regions spanned by four major cosmopolitan inversions on the left and right arms of chromosome 2 (*In(2L)t* and *In(2R)NS*) and chromosome 3 (*In(3L)P* and *In(3R)P*). Note that the 4th (dot) chromosome is not shown.

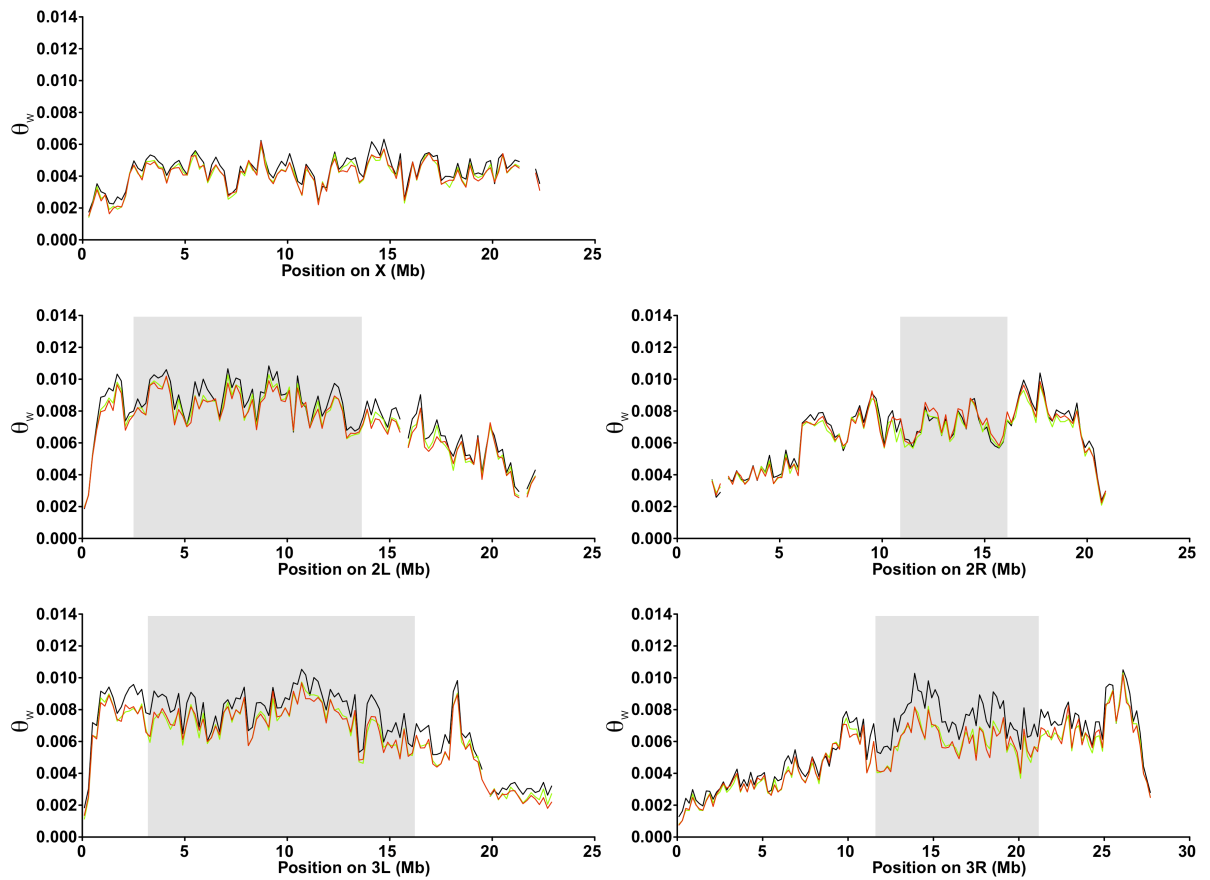


Fig. S3 Frequency of the major cosmopolitan inversion *In(3R)Payne*. We used four different, previously published molecular markers to estimate the frequency of *In(3R)P* in each population. (a) an indel marker in *hsr-omega* (see Anderson *et al.* 2003). (b) - (d) 3 SNP markers in *tolkin* from Matzkin *et al.* (2005): (b) T1444C, (c) C245T, and (d) T249C (see Matzkin *et al.* 2005 for details).

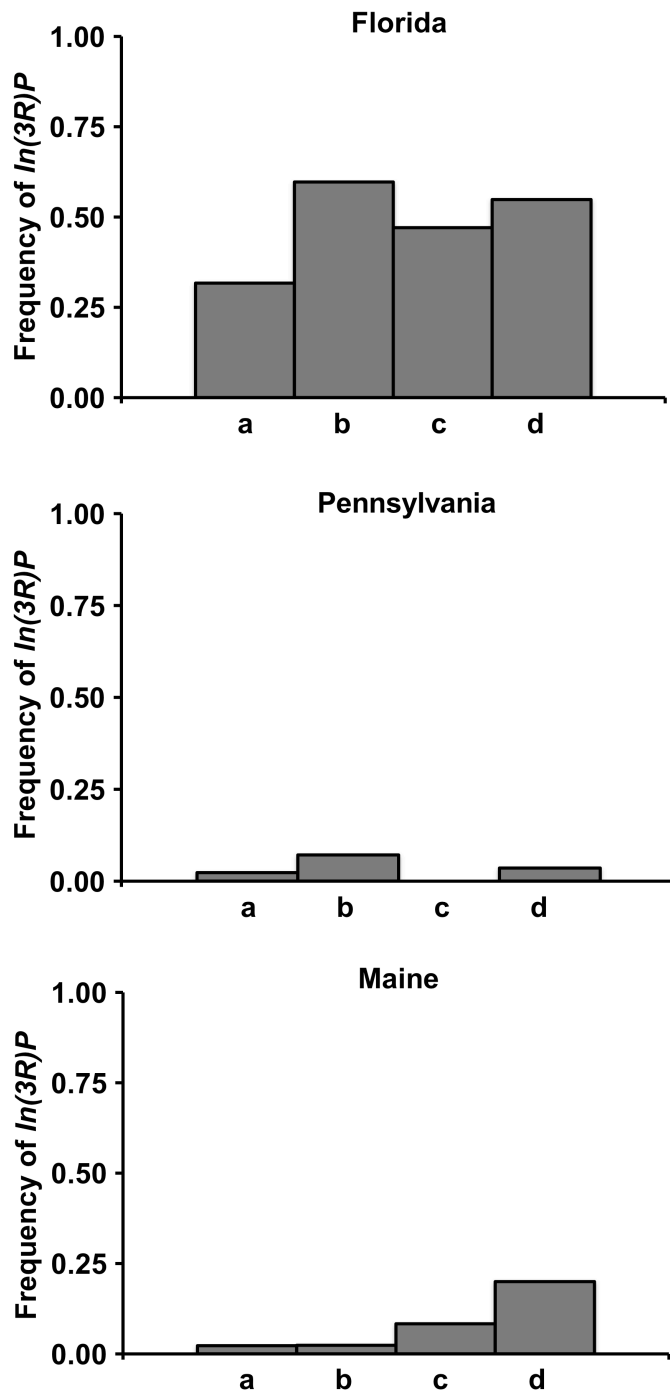


Fig. S4 Overlap of candidate genes among population comparisons. The Venn diagram shows the number of candidate genes for different intersections of the three pairwise population comparisons. FM (Florida - Maine; red), FP (Florida - Pennsylvania; blue); PM (Pennsylvania - Maine; green). (A) candidate genes unique for FM; (B) candidate genes unique for FP; (C) candidate genes unique for PM; (D) candidate genes overlapping only between FM and FP; (E) candidate genes overlapping only between FM and PM; (F) candidate genes overlapping only between FP and PM; (G) candidate genes occurring in all three comparisons. For lists of candidate genes see Table S6.

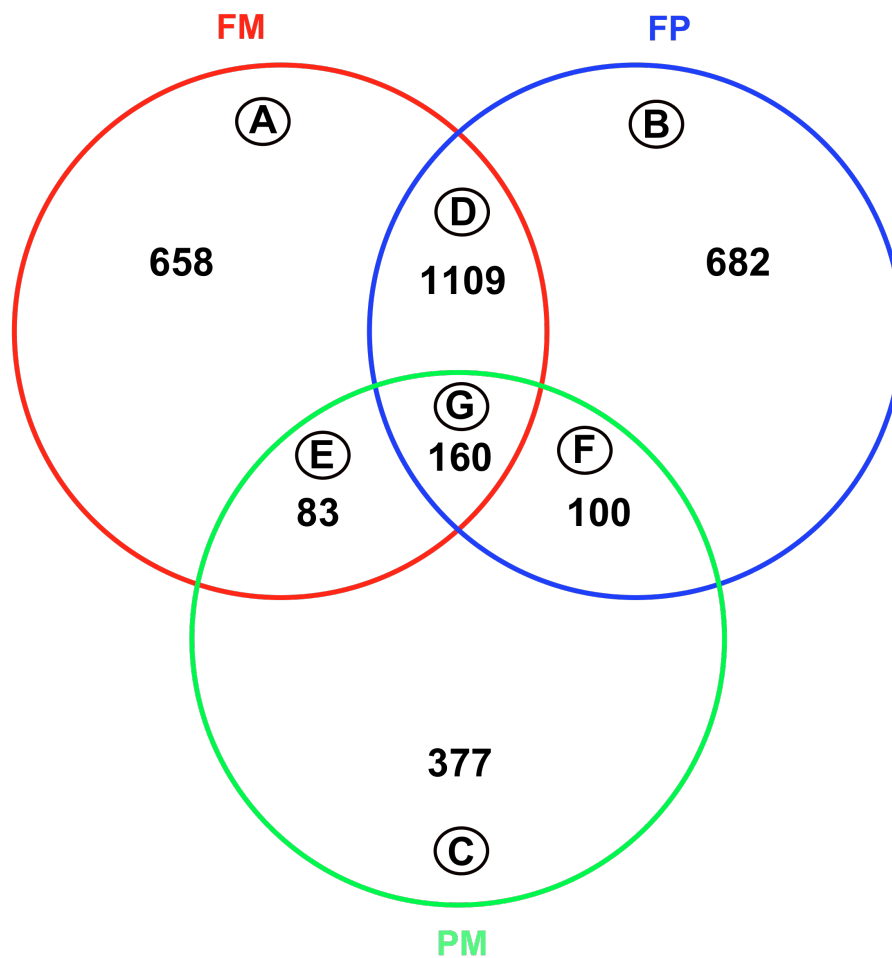
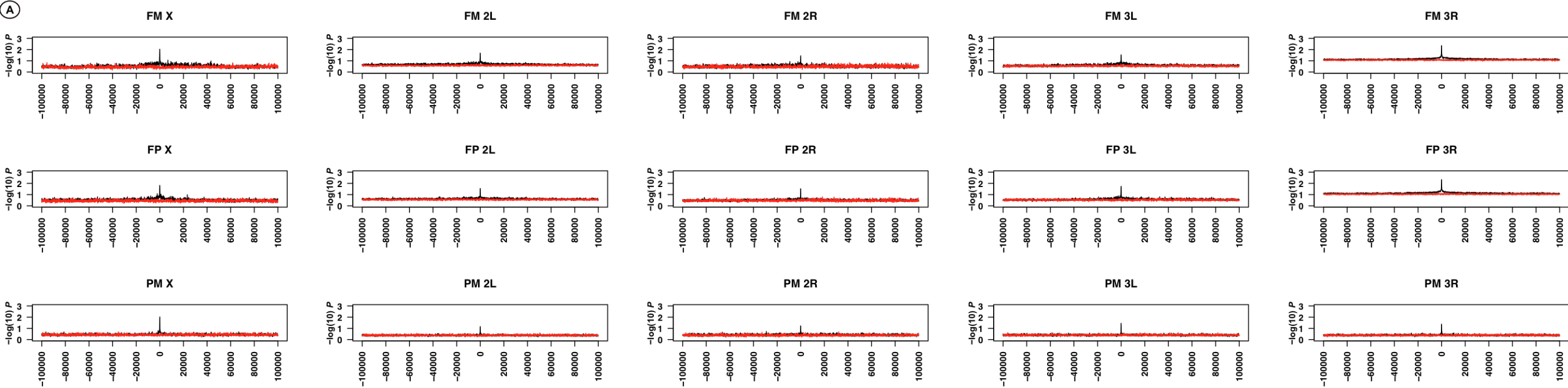
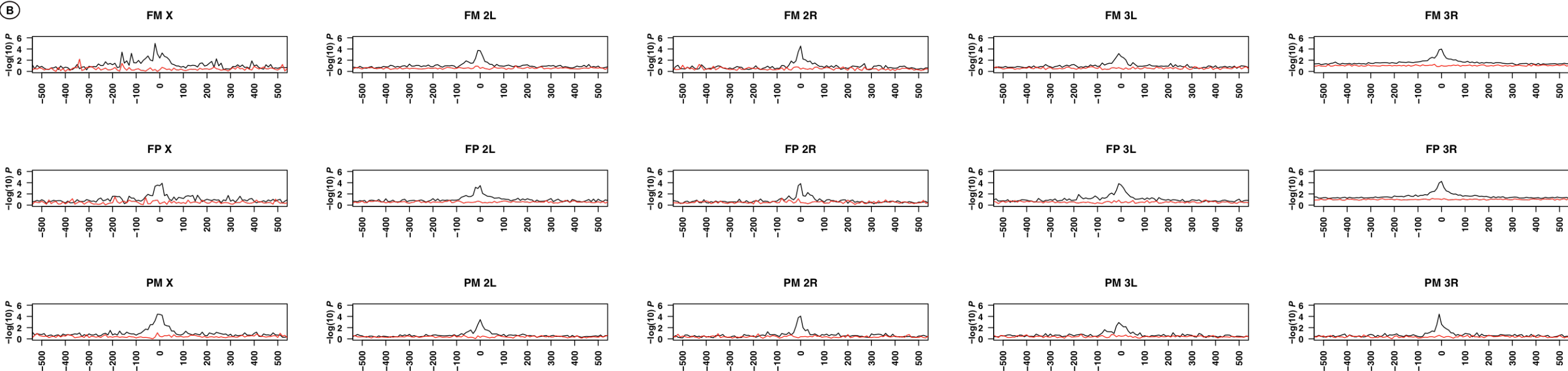


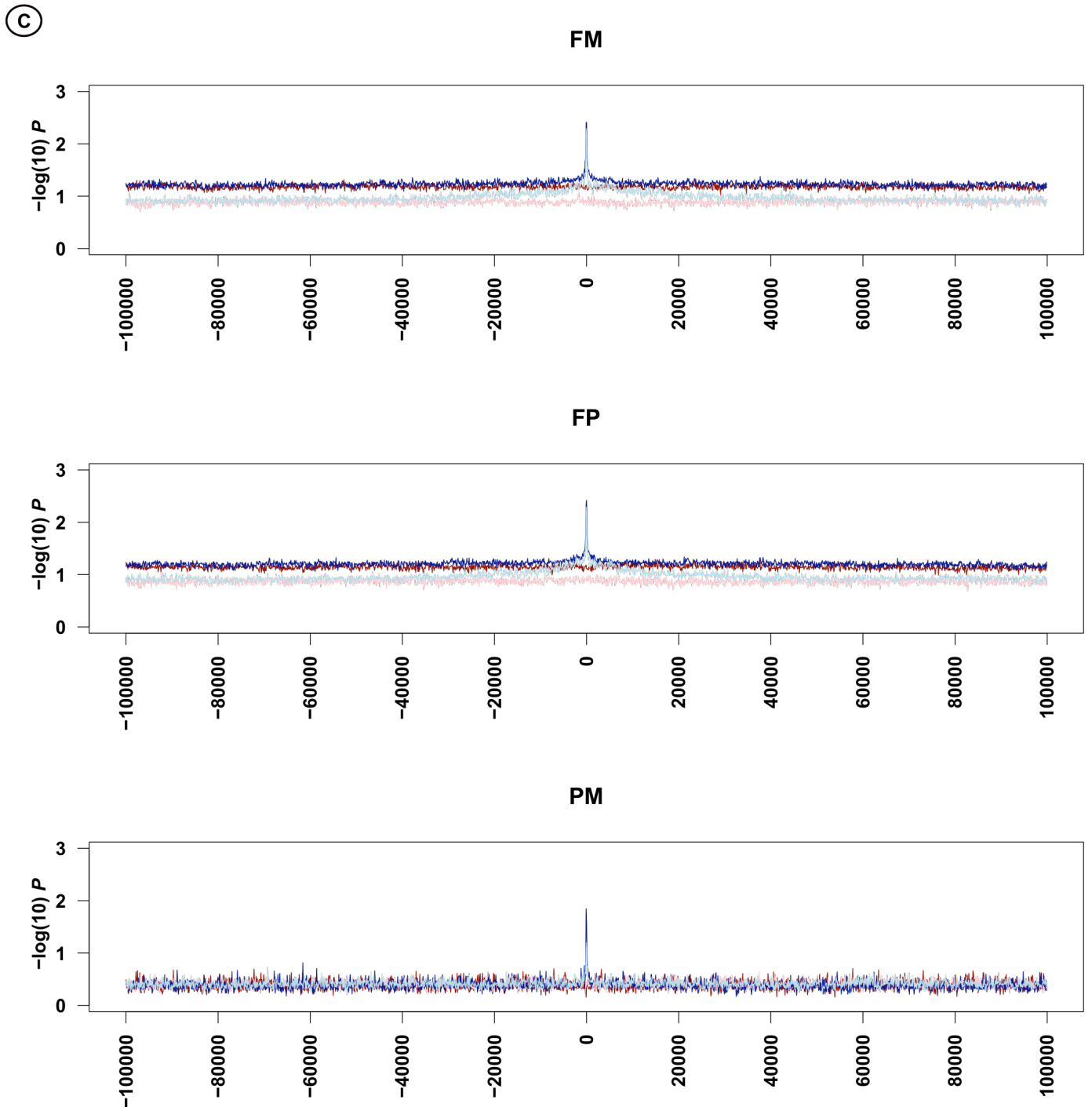
Fig. S5 Decay of statistical significance around candidate SNPs. Median - $\log_{10}(P)$ -values from FET for SNPs flanking the candidate SNPs for all pairwise population comparisons, shown for (i) each chromosomal arm (A, B), (ii) the region spanned by *In(3R)P* (C, D), and (iii) averaged across all autosomes, without and without *3R* (E). FM, Florida - Maine; FP, Florida - Pennsylvania; PM, Pennsylvania - Maine. (A) – (B) Median estimated either using 100 bp windows (A) or 10 bp windows (B) and either covering a region of 100 kb (A) or 0.5 kb (B) upstream and downstream of candidate SNPs. Black line: median of SNPs flanking candidate SNPs; red line: median of SNPs ≥ 500 kb away from candidate SNPs. (C) – (D) Median estimated for *In(3R)P* either using 100 bp windows (C) or 10 bp windows (D) and either covering a region of 100 kb (C) or 0.5 kb (D) upstream and downstream of candidate SNPs. Dark blue line: median of SNPs flanking candidate SNPs inside the inversion *In(3R)P*; light blue line: median of SNPs flanking candidate SNPs outside the inversion *In(3R)P*; dark red line: median of SNPs inside the inversion *In(3R)P* and ≥ 500 kb away from candidate SNPs; light red line: median of SNPs outside the inversion *In(3R)P* and ≥ 500 kb away from candidate SNPs. (E) Median estimated across all autosomes including *3R* (left column) and without *3R* (right column) for each pairwise population comparison, using 100 bp windows. Dark line: median of SNPs flanking candidate SNPs; light lines: median of SNPs ≥ 500 kb away from candidate SNPs. See text for further details.

Note: Use the Zoom function in Adobe Acrobat to zoom into the individual figures and to view detailed aspects of the graphs.

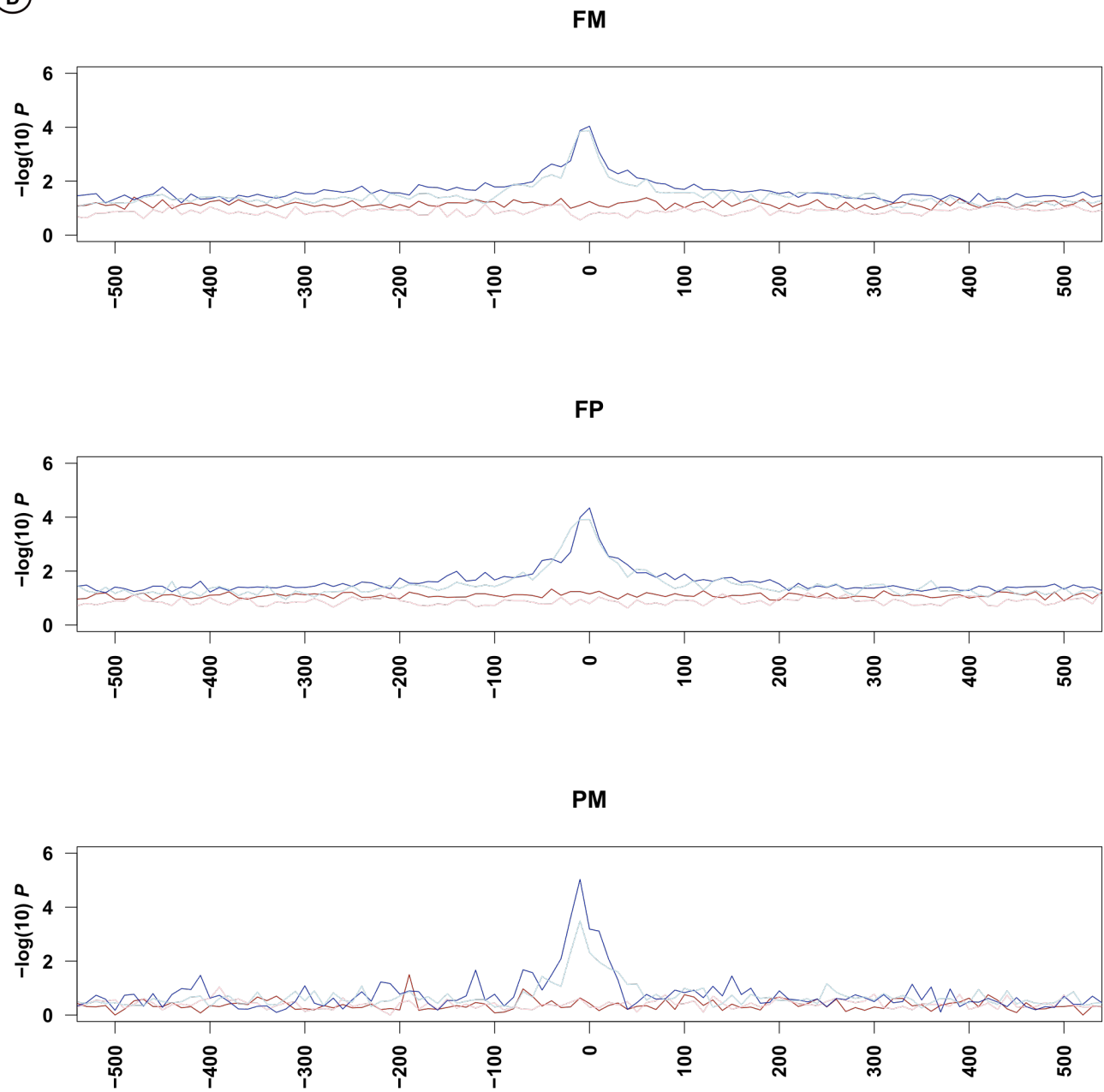
Fig. S5



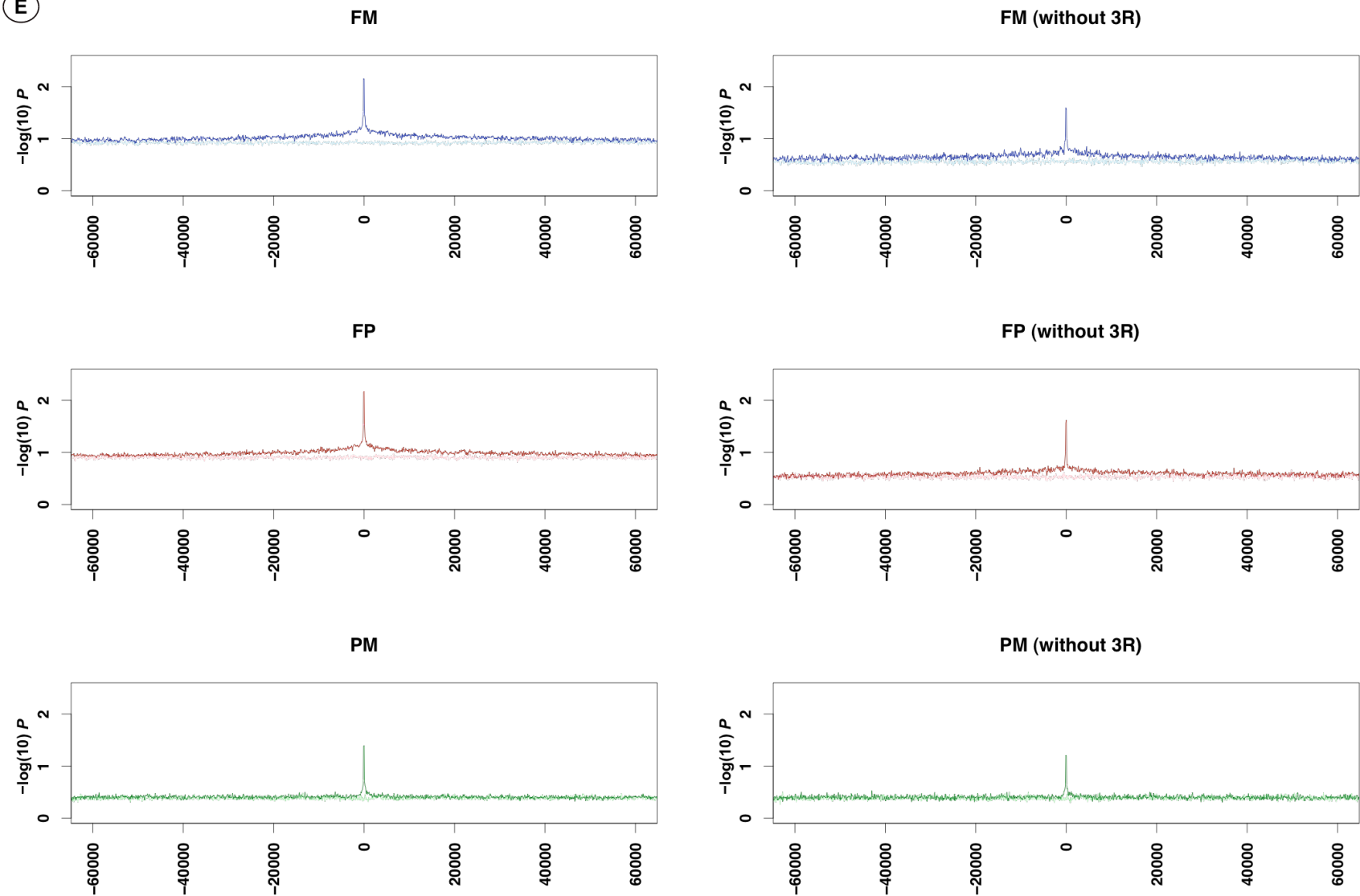




D



E



Appendix S1

Examples of candidate genes in the insulin/insulin-like growth factor (IIS) and target of rapamycin (TOR) signaling pathways[§]

14-3-3 epsilon^{*1}

*amon*²

*foxo*³

*Hmgcr*⁴

*Ilp3*⁵

*Ilp4*⁵

*Imp*⁶

InR^{*7}

*Pi3K59F*⁸

*Pi3K92E*⁹

*tobi*¹⁰

*Tor*¹¹

*Tsc1*¹¹

Shown are pairwise F_{ST} values of the candidate SNPs identified in the different population comparisons; red: Florida-Maine, blue: Florida-Pennsylvania, green: Pennsylvania-Maine.

Notes:

[§] IIS/TOR signaling affects many physiological and metabolic processes and functions, including growth; carbohydrate, lipid and amino acid metabolism; regulation of production of downstream secondary hormones such as juvenile hormone and ecdysone; body size, reproduction, reproductive dormancy, stress resistance, lifespan, and immune function. For reviews of these pathways, especially for their relevance in affecting lifespan, see Tatar *et al.* (2003) and Partridge *et al.* (2011).

* Also found by Kolaczowski *et al.* (2011)

¹ Well known in *C. elegans* to affect lifespan via interaction with Daf-16/Foxo; also interacts with Foxo and affects lifespan in *Drosophila* (Nielsen *et al.* 2008). Also see: <http://flybase.org/reports/FBgn0020238.html>

² Potentially involved in pro-insulin cleavage and insulin production (Rayburn *et al.* 2003); implicated in the production of adipokinetic hormone (AKH, a

glucagon-like hormone in insects; Rhea et al. 2010). For further information see: <http://flybase.org/reports/FBgn0023179.html>

³ *Foxo* is a forkhead box O transcription factor downstream of IIS; affects lifespan and other life history traits in *Drosophila* (e.g., Hwangbo et al. 2004); has also been shown to affect diapause/dormancy in mosquitos (Sim and Denlinger 2008). See: <http://flybase.org/reports/FBgn0038197.html>

⁴ *Hmgcr* encodes a HMG (hydroxymethylglutaryl) coenzyme A reductase; probably indirectly involved in IIS; affects the production of juvenile hormone production downstream of IIS (Belgacem et al. 2007). For further information see: <http://flybase.org/reports/FBgn0263782.htm>

⁵ *Drosophila insulin-like peptides 3 and 5 (ilp or dilp3 and 5)*; peptide ligands for the insulin-like receptor *InR*; different *dilps* have been implicated in the regulation of growth, carbohydrate metabolism, and lifespan. See, for example, Grönke and Partridge (2010) and Grönke et al. (2010). For further information on *dilp3* see: <http://flybase.org/reports/FBgn0044050.html>; for *dilp5* see: <http://flybase.org/reports/FBgn0044048.html>

⁶ *IGF-II mRNA binding protein*; might potentially be involved in IIS signaling. For further information see: <http://flybase.org/reports/FBgn0262735.html>

⁷ *InR*, *insulin-like receptor*, known to affect body size, developmental time, fecundity and fertility, lifespan and the production of secondary hormones downstream of IIS such as juvenile hormone and ecdysone (see [1] [2] in *Drosophila* (e.g., Tatar et al. 2001; also see Flatt et al. 2005 for a review); found to be strongly clinal along the east coast of the USA and Australia, with natural alleles affecting *Drosophila* life history traits (Paaby et al. 2010). Also see: <http://flybase.org/reports/FBgn0013984.html>

⁸ *Pi3K59F* encodes *Phosphatidylinositol 3 kinase 59F*; might be involved in TOR signaling (e.g., Teleman et al. 2010). For further information see: <http://flybase.org/reports/FBgn0015277.html>

⁹ Also known as *PI3K* or *Dp110* (<http://flybase.org/reports/FBgn0015279.html>); important in IIS: phosphatidylinositol-4,5-bisphosphate 3-kinase activity; has been found to be genetically associated with natural variation in the incidence of reproductive dormancy in *D. melanogaster* (Williams et al. 2006); genetically interacts with *cpo* (see App. S2; Schmidt 2011)

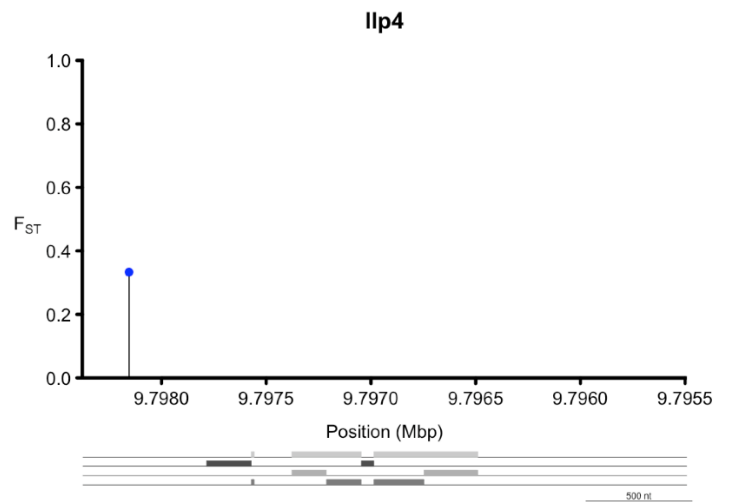
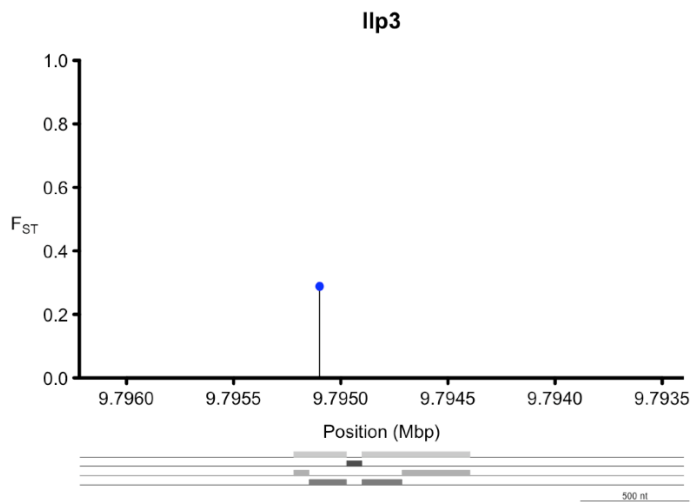
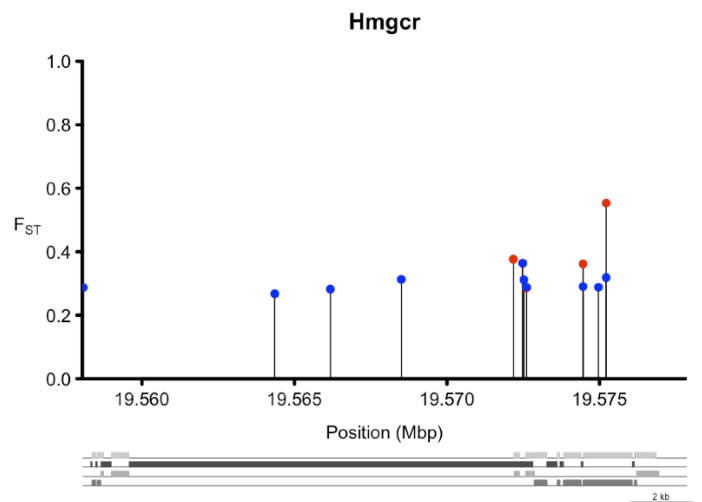
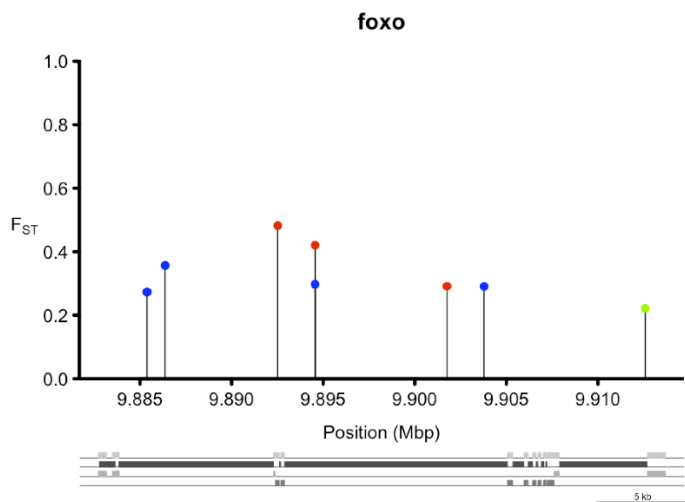
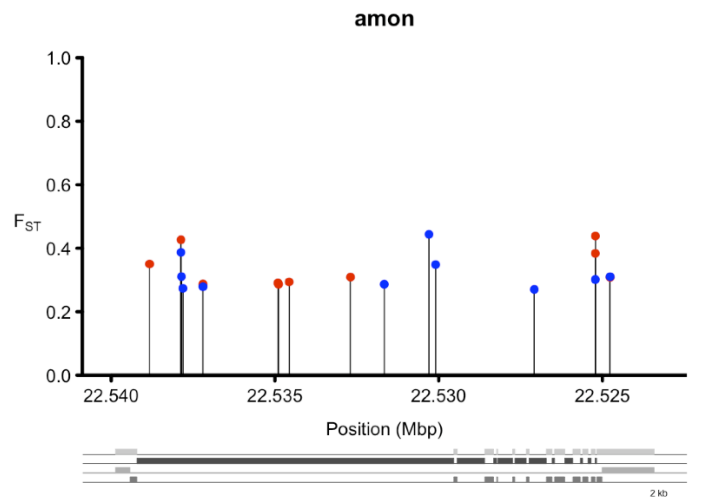
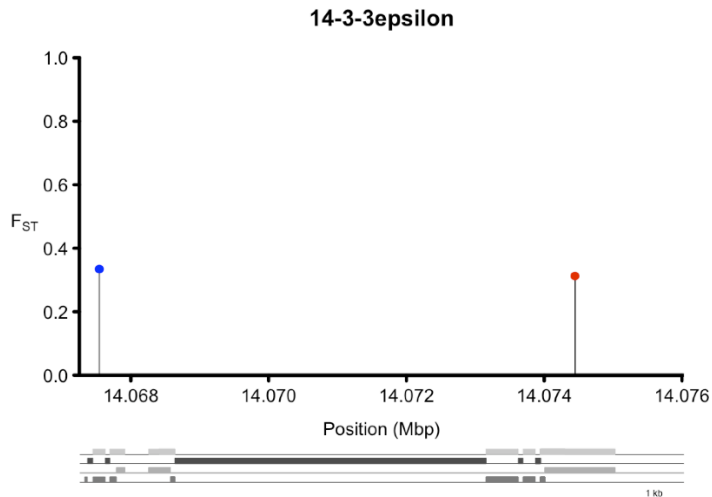
¹⁰ *tobi*, *target of brain insulin*, is a relatively recently discovered gene involved in IIS/AKH (glucagon) signaling (Buch et al. 2008). For further information see: <http://flybase.org/reports/FBgn0261575.html>

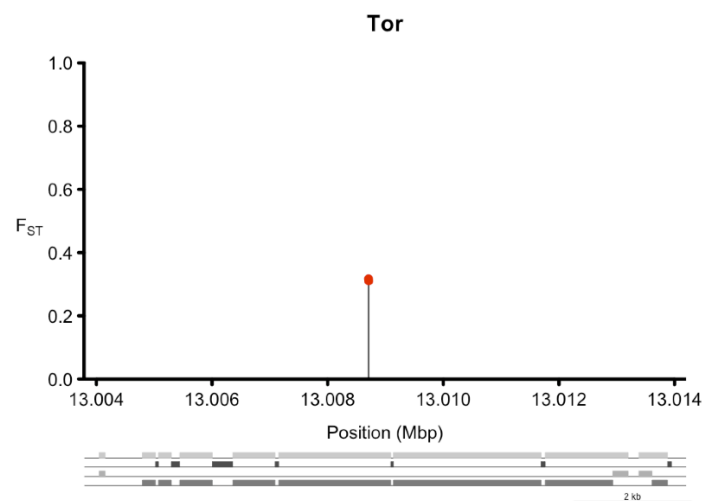
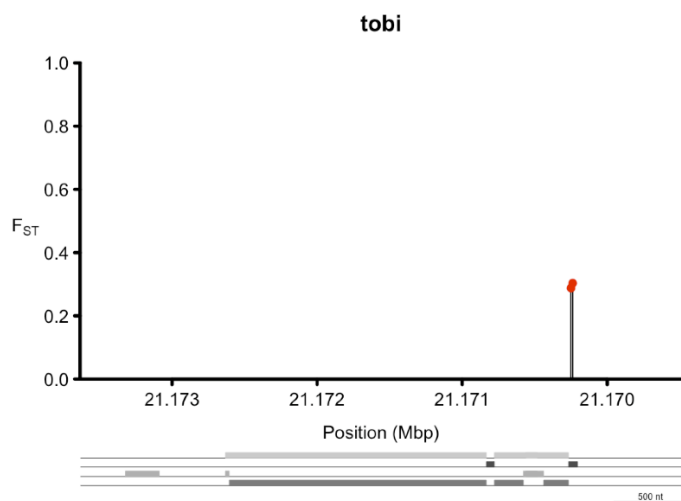
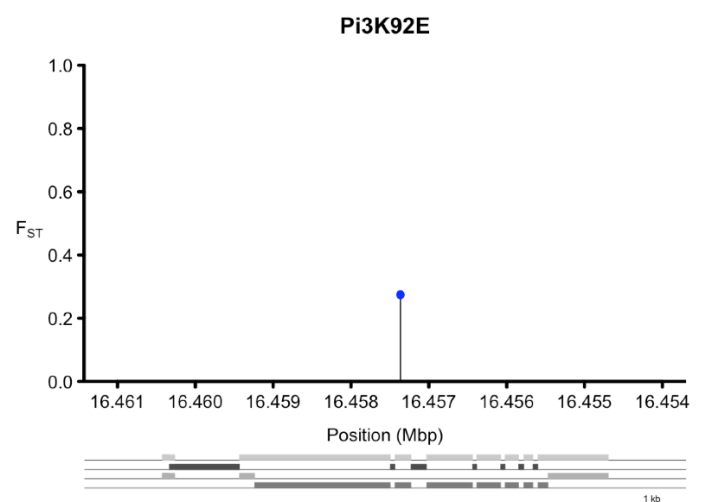
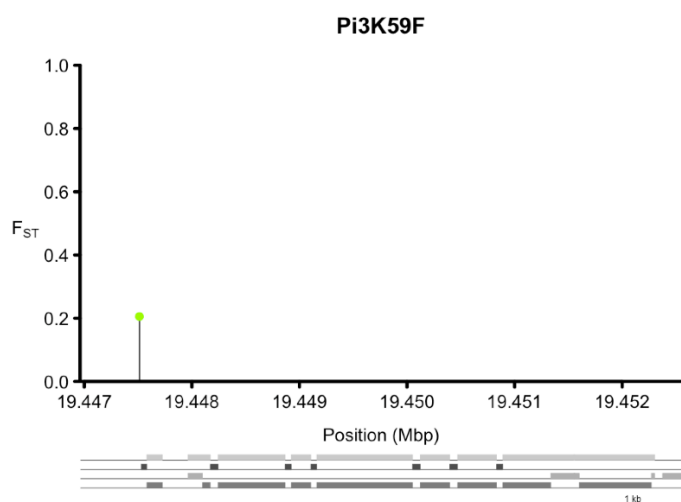
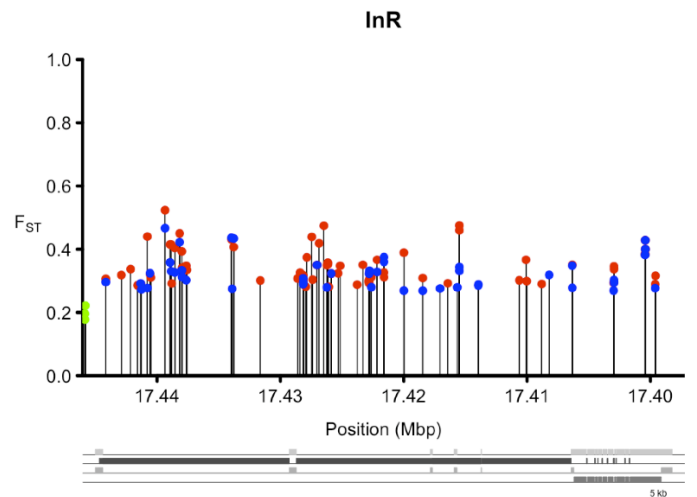
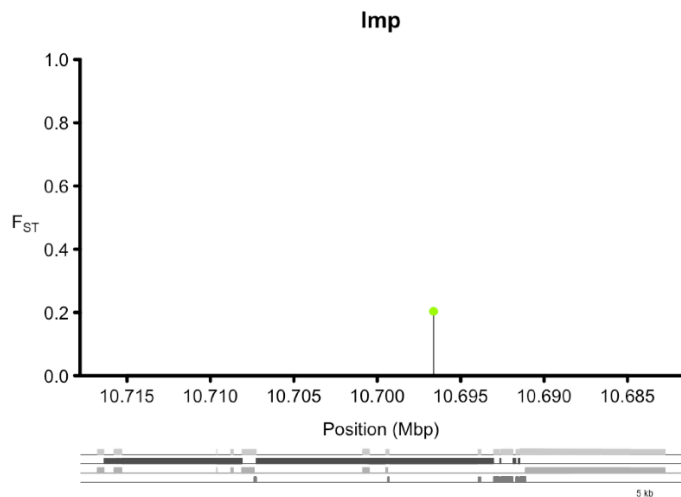
¹¹ Both involved in target of rapamycin (TOR) signaling, with known effects on *Drosophila* lifespan and metabolism (e.g., Oldham and Hafen 2003; Kapahi et al. 2004; Luong et al. 2006; Partridge et al. 2011). For further details on *Tor* see: <http://flybase.org/reports/FBgn0021796.html>; for details on *Tsc1* see: <http://flybase.org/reports/FBgn0026317.html>

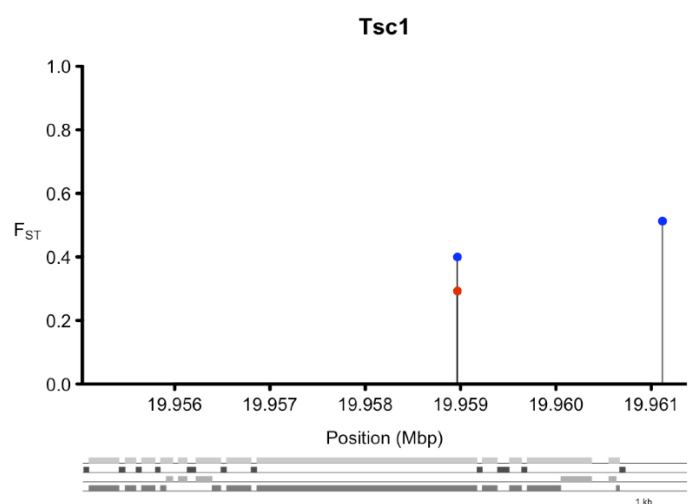
References:

- Belgacem YH, Martin JR (2007) *Hmgcr* in the corpus allatum controls sexual dimorphism of locomotor activity and body size via the insulin pathway in *Drosophila*. *PLoS ONE* **2**, e187.
- Buch S, Melcher C, Bauer M, Katzenberger J, Pankratz MJ (2008) Opposing effects of dietary protein and sugar regulate a transcriptional target of *Drosophila* insulin-like peptide signaling. *Cell Metabolism* **7**, 321-332.
- Flatt T, Tu MP, Tatar M (2005) Hormonal pleiotropy and the juvenile hormone regulation of *Drosophila* development and life history. *BioEssays* **27**, 999-1010.
- Grönke S, Partridge L (2010) The Functions of Insulin-like Peptides in Insects. In: Clemmons D, Robinson, ICAF, Christen, Y (editors), *IGFs: Local Repair and Survival Factors Throughout Life Span*, pp. 105-124. Springer: Berlin, Heidelberg.
- Grönke S, Clarke D-F, Broughton S, Andrews TD, Partridge L (2010) Molecular Evolution and Functional Characterization of *Drosophila* Insulin-Like Peptides. *PLoS Genetics* **6**, e1000857.
- Hwangbo DS, Gershman B, Tu MP, Palmer M, Tatar M (2004b) *Drosophila* dFOXO controls lifespan and regulates insulin signalling in brain and fat body. *Nature* **429**, 562-566.
- Kapahi P, Zid BM, Harper T, et al. (2004) Regulation of lifespan in *Drosophila* by modulation of genes in the TOR signaling pathway. *Current Biology* **14**, 885-890.
- Kolaczowski B, Kern AD, Holloway AK, Begun DJ (2011) Genomic Differentiation Between Temperate and Tropical Australian Populations of *Drosophila melanogaster*. *Genetics* **187**, 245-260.
- Luong N, Davies CR, Wessells RJ, et al. (2006) Activated FOXO-mediated insulin resistance is blocked by reduction of TOR activity. *Cell Metabolism* **4**, 133-142.
- Oldham S, Hafen E (2003) Insulin/IGF and target of rapamycin signaling: a TOR de force in growth control. *Trends in Cell Biology* **13**, 79-85.
- Nielsen MD, Luo X, Biteau B, Syverson K, Jasper H (2008) 14-3-3ε antagonizes FoxO to control growth, apoptosis and longevity in *Drosophila*. *Aging Cell* **7**, 688-699.
- Paaby AB, Blacket MJ, Hoffmann AA, Schmidt PS (2010) Identification of a candidate adaptive polymorphism for *Drosophila* life history by parallel independent clines on two continents. *Molecular Ecology* **19**, 760-774.
- Partridge L, Alic N, Bjedov I, Piper MDW (2011) Ageing in *Drosophila*: The role of the insulin/IGF and TOR signalling network. *Experimental Gerontology* **46**, 376-381.
- Rayburn LYM, Gooding HC, Choksi SP, et al. (2003) *amontillado*, the *Drosophila* Homolog of the Prohormone Processing Protease PC2, Is Required During Embryogenesis and Early Larval Development. *Genetics* **163**, 227-237.
- Rhea JM, Wegener C, Bender M (2010) The Proprotein Convertase Encoded by *amontillado* (*amon*) Is Required in *Drosophila* Corpora Cardiaca Endocrine Cells Producing the Glucose Regulatory Hormone AKH. *PLoS Genetics* **6**, e1000967.

- Schmidt PS (2011) Evolution and mechanisms of insect reproductive diapause: a plastic and pleiotropic life history syndrome. In *Mechanisms of Life History Evolution* (T Flatt, A Heyland, eds.). Pp. 230-242. Oxford: Oxford University Press.
- Sim C, Denlinger D (2008) Insulin signaling and FOXO regulate the overwintering diapause of the mosquito *Culex pipiens*. *Proc. Natl. Acad. Sci. USA* **105**, 6777 - 6781.
- Tatar M, Kopelman A, Epstein D, et al. (2001) A mutant *Drosophila* insulin receptor homolog that extends life-span and impairs neuroendocrine function. *Science* **292**, 107-110.
- Tatar M, Bartke A, Antebi A (2003) The endocrine regulation of aging by insulin-like signals. *Science* **299**, 1346-1351
- Teleman AA (2010) Molecular mechanisms of metabolic regulation by insulin in *Drosophila*. *Biochemical Journal* **425**, 13-26.
- Williams KD, Busto M, Suster ML, et al. (2006) Natural variation in *Drosophila melanogaster* diapause due to the insulin-regulated PI3-kinase. *Proc. Natl. Acad. Sci. USA* **103**, 15911-15915.







Appendix S2

Examples of candidate genes involved in ecdysone biosynthesis and signaling[§]

cpo^{*1}

*dib*²

dre4^{#3}

*Eig71Eb*⁴

*Eig71Ec*⁴

Eip63E^{*#4}

Eip74EF^{*#4}

Eip75B^{*#4,5}

Eip93F^{*4}

*Hr46*⁶

Samuel^{*7}

*sec10*⁸

*svp*⁹

*woc*¹⁰

Shown are pairwise F_{ST} values of the candidate SNPs identified in the different population comparisons; red: Florida-Maine, blue: Florida-Pennsylvania, green: Pennsylvania-Maine.

Notes:

[§] For reviews of this pathway see, for example, King-Jones and Thummel (2005) and Schwedes and Carney (2012). For a review of the biosynthesis of ecdysteroids see Gilbert *et al.* (2002). The active steroid hormone 20-hydroxyecdysone (20E; "ecdysone") has pervasive effects on various aspects of *Drosophila* life history, including effects on metamorphosis, growth, ovarian maturation, reproductive dormancy, lifespan, and immunity (e.g., see Kozlova and Thummel 2000; Simon *et al.* 2003; Flatt *et al.* 2005; King-Jones and Thummel 2005; Flatt *et al.* 2008; Tricoire *et al.* 2009; Galikova *et al.* 2011, and references therein)

* Also found by Kolaczowski *et al.* (2011)

Also found by Turner *et al.* (2011) in an artificial selection experiment on body size in *D. melanogaster*. It is particularly noteworthy that several ecdysone signaling genes were found by Turner *et al.* (2011) as well as in our study since ecdysone signaling affects many life history traits including growth

and body size (e.g., Colombani *et al.* 2005) and since body size is strongly clinal along the US east coast (e.g., Coyne and Beecham 1987)

¹ Found to be clinal along the US east coast and to affect the propensity of reproductive dormancy and related life history phenotypes by Schmidt *et al.* (2008); *cpo* contains a large number of ecdysone response elements (Schmidt *et al.* 2008) and is expressed in the larval ring gland, the main site of larval ecdysteroid production (Harvie *et al.* 1998); notably, reproductive dormancy is known to be affected ecdysteroids (e.g., Richard *et al.* 1998, 2001; Flatt *et al.* 2005). See: <http://flybase.org/reports/FBgn0000363.html> for further details

² *dib, disembodied*; involved in the biosynthesis of ecdysone (Chavez *et al.* 2000). For details see: <http://flybase.org/reports/FBgn0000449.html>

³ Gene involved in chromatin binding; mutations in this gene cause ecdysteroid deficiency (Sliter and Gilbert 1992); for further information see: <http://flybase.org/reports/FBgn0002183.html>

⁴ *Ecdysone-inducible proteins (Eip)* or *genes (Eig)*; these are genes/proteins known to be transcriptionally induced/regulated by ecdysone; for detailed information on these genes see King-Jones and Thummel (2005) and <http://flybase.org/reports/FBgn0004589.html>; <http://flybase.org/reports/FBgn0004590.html>; <http://flybase.org/reports/FBgn0005640.html>; <http://flybase.org/reports/FBgn0000567.html>; <http://flybase.org/reports/FBgn0000568.html> <http://flybase.org/reports/FBgn0013948.html>

⁵ *Eip75B* has been found to be associated with the startle response by Yamamoto *et al.* (2008) and in a GWAS study based on the DGRP lines by Mackay *et al.* (2012); it has also been identified in a P-element insertion screen to affect lifespan (Magwire *et al.* 2010)

⁶ *Hormone receptor 46*; also known as *dHR3*; a nuclear hormone receptor; known to affect embryogenesis and growth; also interacts with IIS (App. S1) (Carney *et al.* 1997; King-Jones and Thummel 2005; Montagne *et al.* 2010). For details see: <http://flybase.org/reports/FBgn0000448.html>

⁷ Also known as *moses*; found by Kolaczowski *et al.* (2011) to be clinal; interacts with *Hormone receptor 78 (Hr78)* and thus with ecdysone signaling (Baker *et al.* 2007). See: <http://flybase.org/reports/FBgn0032330.html>

⁸ Might be involved in ecdysteroid secretion (Andrews *et al.* 2002). See: <http://flybase.org/reports/FBgn0027103.html>

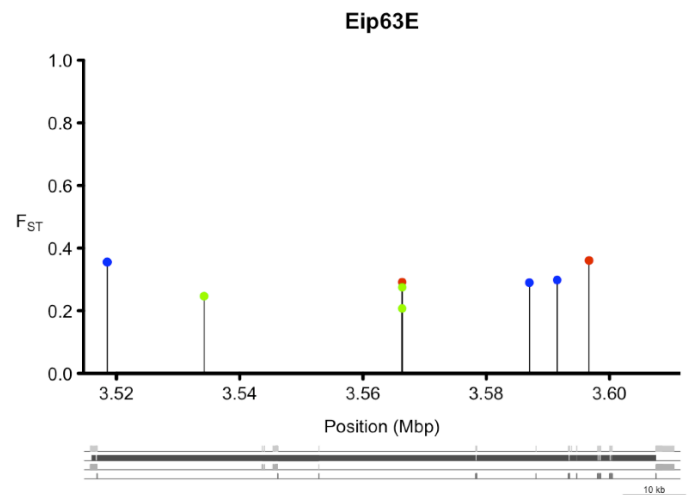
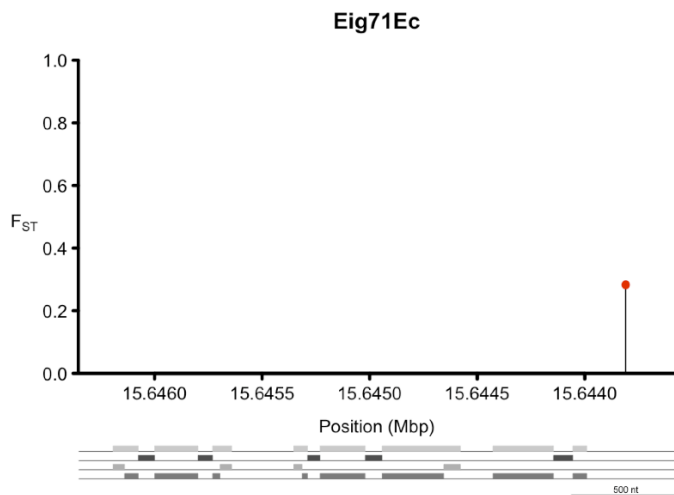
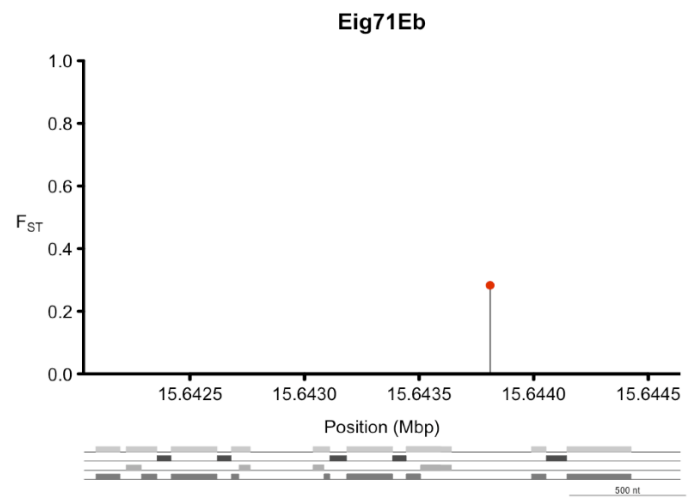
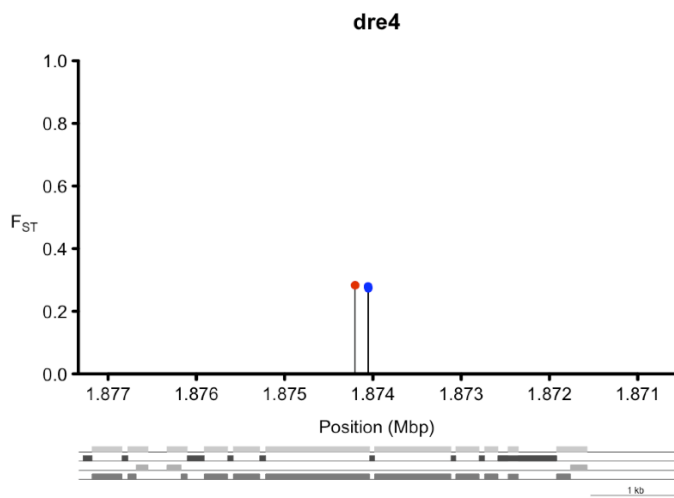
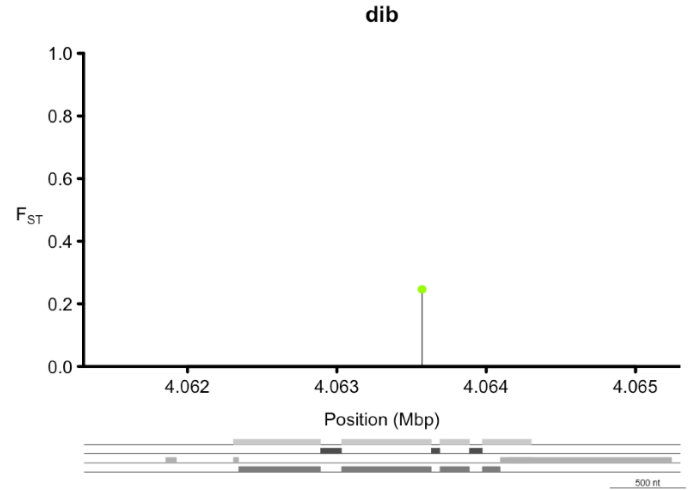
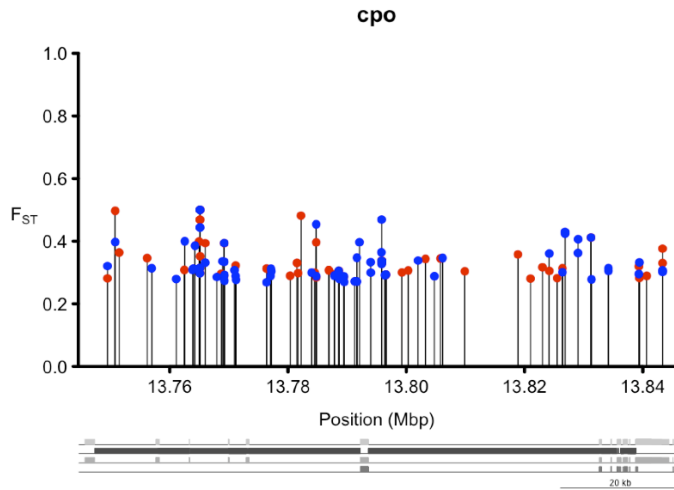
⁹ *Svp, seven up*; nuclear hormone receptor (NHR) known to interact with ecdysone signaling (see Gates *et al.* 2004; King-Jones and Thummel 2005). See: <http://flybase.org/reports/FBgn0003651.html>

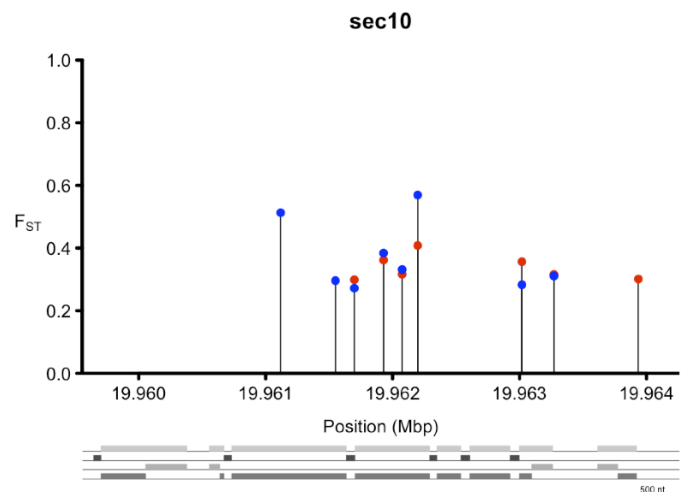
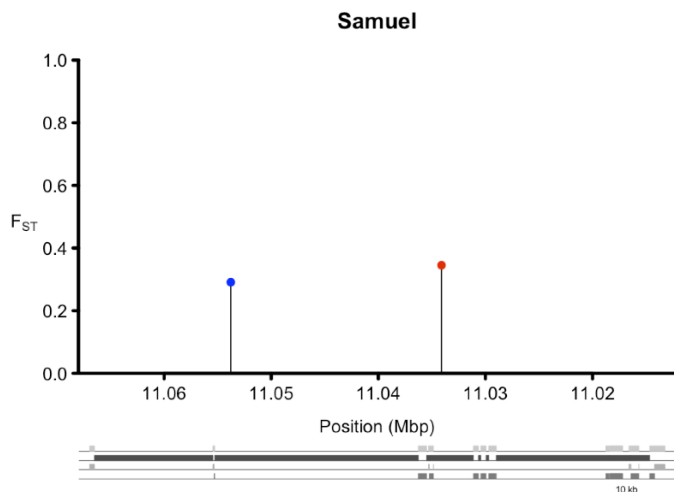
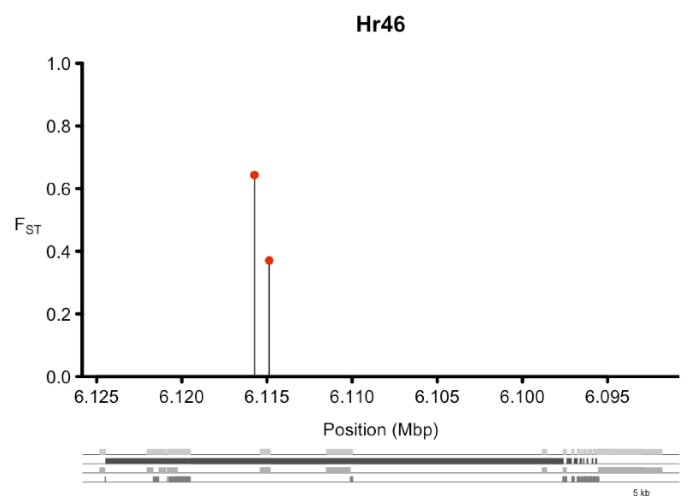
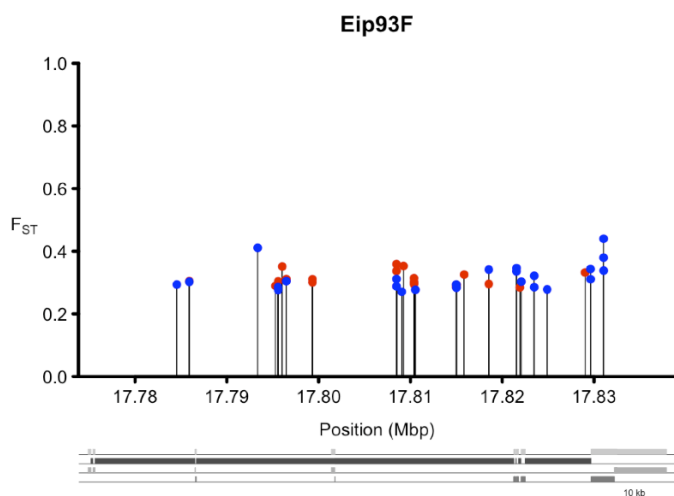
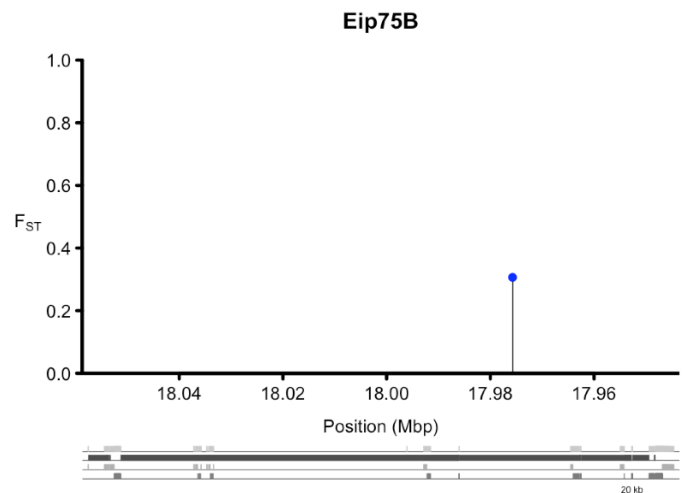
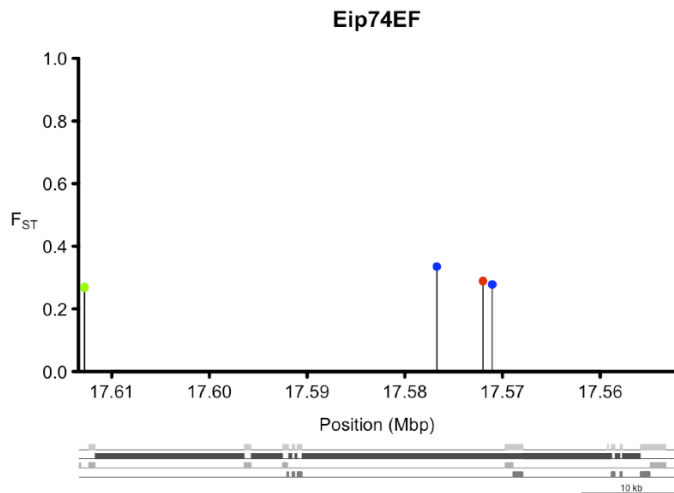
¹⁰ *woc*, without children; found by Turner et al. (2008) to be clinal; *woc* mutants are ecdysteroid deficient (Warren et al. 2001). For further information see: <http://flybase.org/reports/FBgn0010328.html>

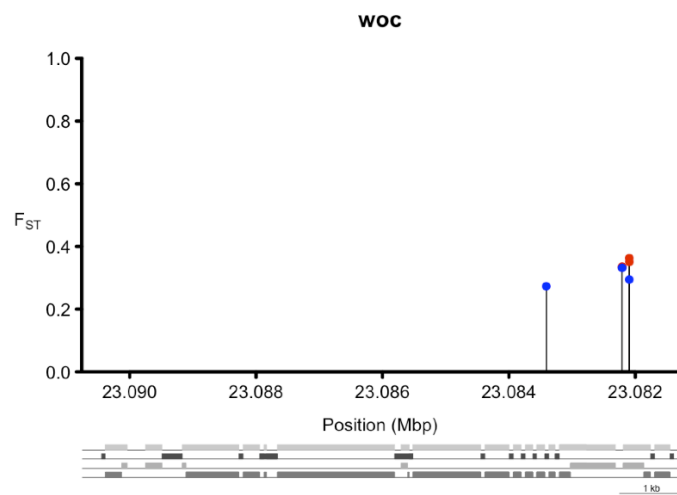
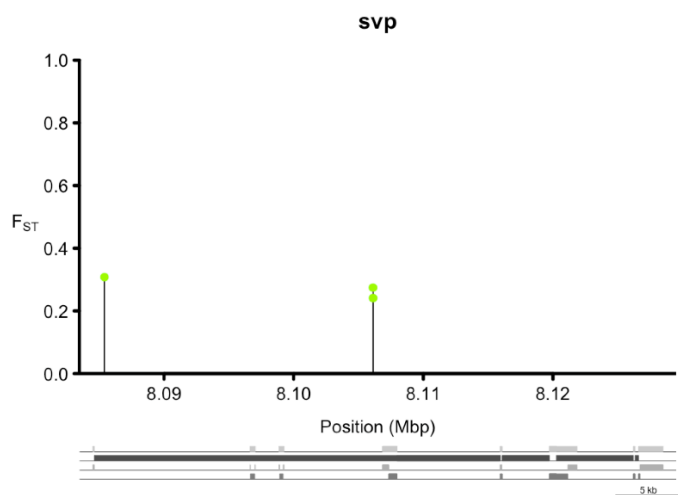
References:

- Andrews HK, Zhang YQ, Trotta N, Broadie K (2002) *Drosophila* sec10 is required for hormone secretion but not general exocytosis or neurotransmission. *Traffic* **3**, 906-921.
- Baker KD, Beckstead RB, Mangelsdorf DJ, Thummel CS (2007) Functional interactions between the Moses corepressor and DHR78 nuclear receptor regulate growth in *Drosophila*. *Genes & Development* **21**, 450-464.
- Carney GE, Wade AA, Sapra R, Goldstein ES, Bender M (1997) DHR3, an ecdysone-inducible early-late gene encoding a *Drosophila* nuclear receptor, is required for embryogenesis. *Proc. Natl. Acad. Sci. USA* **94**, 12024-12029.
- Chavez VM, Marques G, Delbecque JP, et al. (2000) The *Drosophila* *disembodied* gene controls late embryonic morphogenesis and codes for a cytochrome P450 enzyme that regulates embryonic ecdysone levels. *Development* **127**, 4115-4126.
- Colombani J, Bianchini L, Layalle S, et al. (2005) Antagonistic Actions of Ecdysone and Insulins Determine Final Size in *Drosophila*. *Science* **310**, 667-670.
- Coyne JA, Beecham E (1987) Heritability of Two Morphological Characters Within and Among Natural Populations of *Drosophila melanogaster*. *Genetics* **117**, 727-737.
- Flatt T, Heyland A, Rus F, et al. (2008) Hormonal regulation of the humoral innate immune response in *Drosophila melanogaster*. *Journal of Experimental Biology* **211**, 2712-2724.
- Flatt T, Tu M-P, Tatar M (2005) Hormonal pleiotropy and the juvenile hormone regulation of *Drosophila* development and life history. *BioEssays* **27**, 999-1010.
- Galikova M, Klepsatel P, Senti G, Flatt T (2011) Steroid hormone regulation of *C. elegans* and *Drosophila* aging and life history. *Experimental Gerontology* **46**, 141-147.
- Gates J, Lam G, Ortiz JA, Losson R, Thummel CS (2004) *rigor mortis* encodes a novel nuclear receptor interacting protein required for ecdysone signaling during *Drosophila* larval development. *Development* **131**, 25-36.
- Gilbert LI, Rybczynski R, Warren JT (2002) Control and biochemical nature of the ecdysteroidogenic pathway. *Annual Review of Entomology* **47**, 883-916.
- Harvie PD, Filippova M, Bryant PJ (1998) Genes Expressed in the Ring Gland, the Major Endocrine Organ of *Drosophila melanogaster*. *Genetics* **149**, 217-231.
- King-Jones K, Thummel CS (2005) Nuclear receptors - A perspective from *Drosophila*. *Nature Reviews Genetics* **6**, 311-323.
- Kolaczkowski B, Kern AD, Holloway AK, Begun DJ (2011) Genomic Differentiation Between Temperate and Tropical Australian Populations of *Drosophila melanogaster*. *Genetics* **187**, 245-260.

- Kozlova T, Thummel CS (2000) Steroid regulation of postembryonic development and reproduction in *Drosophila*. *Trends in Endocrinology and Metabolism* **11**, 276-280.
- Magwire MM, Yamamoto A, Carbone MA, et al. (2010) Quantitative and Molecular Genetic Analyses of Mutations Increasing *Drosophila* Life Span. *PLoS Genetics* **6**, e1001037
- Mackay TFC, Richards S, Stone EA, et al. (2012) The *Drosophila melanogaster* Genetic Reference Panel. *Nature* **482**, 173-178.
- Montagne J, Lecerf C, Parvy J-P, et al. (2010) The Nuclear Receptor DHR3 Modulates dS6 Kinase Dependent Growth in *Drosophila*. *PLoS Genetics* **6**, e1000937.
- Richard DS, Jones JM, Barbarito MR, et al. (2001) Vitellogenesis in diapausing and mutant *Drosophila melanogaster*: further evidence for the relative roles of ecdysteroids and juvenile hormones. *Journal of Insect Physiology* **47**, 905-913.
- Richard DS, Watkins NL, Serafin RB, Gilbert LI (1998) Ecdysteroids regulate yolk protein uptake by *Drosophila melanogaster* oocytes. *Journal of Insect Physiology* **44**, 637-644.
- Schmidt PS, Zhu CT, Das J, et al. (2008) An amino acid polymorphism in the couch potato gene forms the basis for climatic adaptation in *Drosophila melanogaster*. *Proc. Natl. Acad. Sci. USA* **105**, 16207-16211.
- Schwedes CC, Carney GE (2012) Ecdysone signaling in adult *Drosophila melanogaster*. *Journal of Insect Physiology*, in press.
- Simon AF, Shih C, Mack A, Benzer S (2003) Steroid control of longevity in *Drosophila melanogaster*. *Science* **299**, 1407-1410.
- Sliter TJ, Gilbert LI (1992) Developmental Arrest and Ecdysteroid Deficiency Resulting From Mutations at the *dre4* Locus of *Drosophila*. *Genetics* **130**, 555-568.
- Tricoire H, Battisti V, Trannoy Sv, et al. (2009) The steroid hormone receptor *EcR* finely modulates *Drosophila* lifespan during adulthood in a sex-specific manner. *Mechanisms of Ageing and Development* **130**, 547-552.
- Turner TL, Levine MT, Eckert ML, Begun DJ (2008) Genomic Analysis of Adaptive Differentiation in *Drosophila melanogaster*. *Genetics* **179**, 455-473.
- Turner TL, Stewart AD, Fields AT, Rice WR, Tarone AM (2011) Population-Based Resequencing of Experimentally Evolved Populations Reveals the Genetic Basis of Body Size Variation in *Drosophila melanogaster*. *PLoS Genetics* **7**, e1001336.
- Warren JT, Wismar J, Subrahmanyam B, Gilbert LI (2001) Woc (without children) gene control of ecdysone biosynthesis in *Drosophila melanogaster*. *Molecular and Cellular Endocrinology* **181**, 1.
- Yamamoto A, Zwarts L, Callaerts P, et al. (2008) Neurogenetic networks for startle-induced locomotion in *Drosophila melanogaster*. *Proc. Natl. Acad. Sci. USA* **105**, 12393-12398.







Appendix S3

Examples of candidate genes involved in nuclear hormone receptor (NHR) signaling and other endocrine pathways[§]

*ETHR*¹

*GRHR*²

*Hr46*³

*Hr96*⁴

*svp*⁵

Shown are pairwise F_{ST} values of the candidate SNPs identified in the different population comparisons; red: Florida-Maine, blue: Florida-Pennsylvania, green: Pennsylvania-Maine.

Notes:

[§] Nuclear hormone receptor (NHR) signaling and endocrine signaling in general is critically important for coordinating many aspects of development, growth and metabolism; for a review see, for example, King-Jones and Thummel (2005). For other candidate genes involved in hormonal signaling pathways not shown here see [Oß \] ÈS1](#) (IIS/TOR) and [Oß \] ÈS2](#) (ecdysone)

¹ *ETHR*, *eclosion triggering hormone receptor*; Kolaczowski et al. (2011) do not find the receptor but find the gene that encodes the ligand for ETHR, i.e. *eclosion hormone* (*Eh*). See: <http://flybase.org/reports/FBgn0038874.html>

² *GRHR*, *gonadotropin-releasing hormone receptor*, also known as *adipokinetic hormone receptor* (*AKHR*); functional analog of mammalian glucagon receptor; involved in fat storage and mobilization and carbohydrate metabolism (e.g., Grönke et al. 2007; Bharucha et al. 2008). For details see: flybase.org/reports/FBgn0025595.html

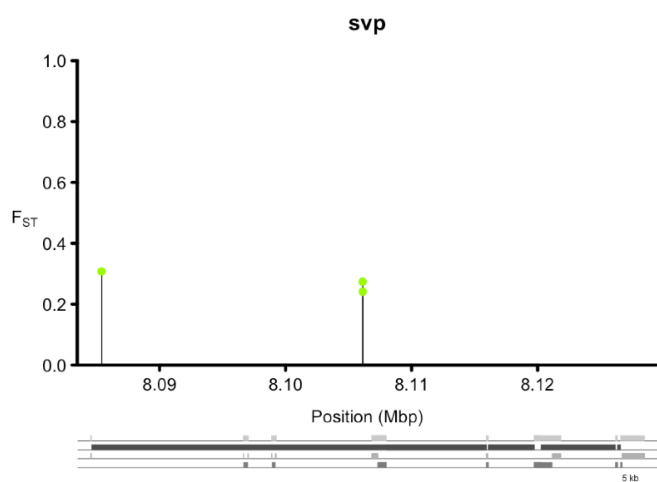
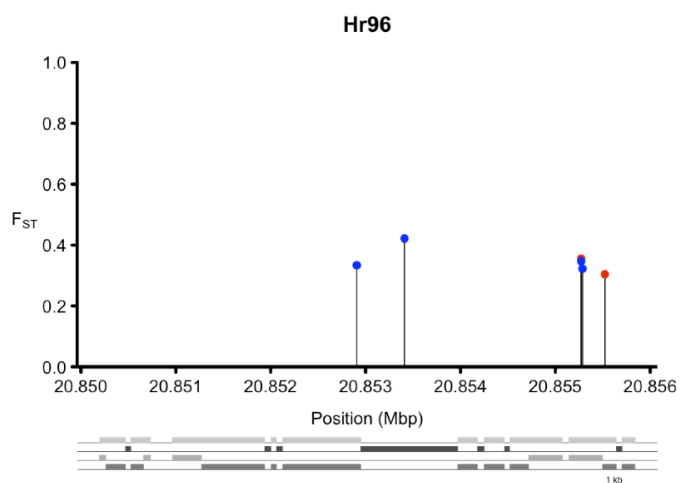
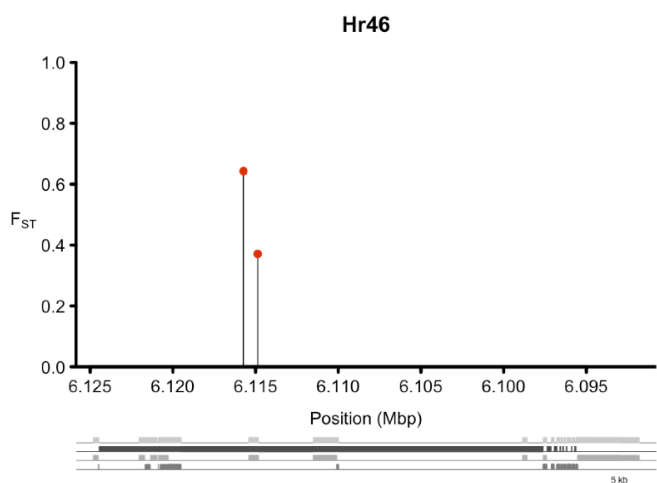
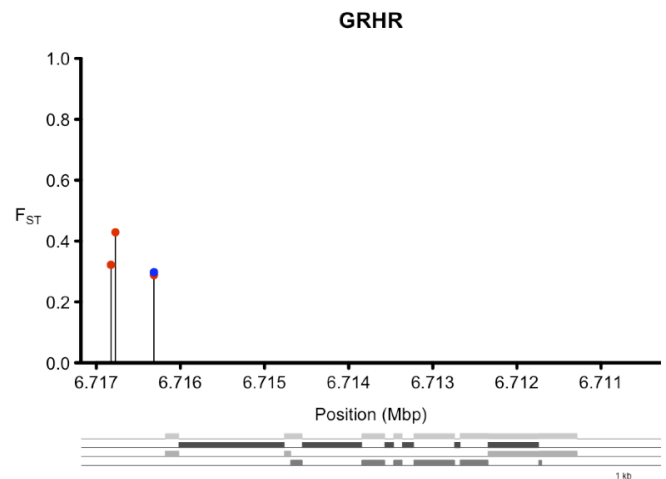
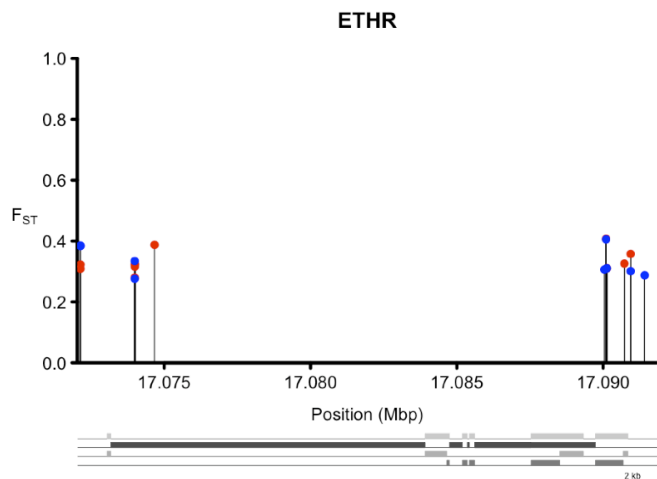
³ *Hr46*, *hormone receptor 46*, a nuclear hormone receptor (NHR); also known as dHR3; involved in ecdysone signaling (e.g., King-Jones and Thummel 2005); also see [Oß \] ÈS2](#). See: <http://flybase.org/reports/FBgn0000448.html>

⁴ *Hr96*, *hormone receptor 96*, a nuclear hormone receptor (NHR); involved in triacylglycerol and cholesterol metabolism as well as the xenobiotic response (King-Jones et al. 2006; Horner et al. 2009; Sieber et al. 2009). For details see: <http://flybase.org/reports/FBgn0015240.html>

⁵ *svp*, *seven up*; a nuclear hormone receptor (NHR); also involved in ecdysone signaling (see [Oß \] ÈS2](#)); for details see King-Jones and Thummel (2005) and: <http://flybase.org/reports/FBgn0003651.html>

References:

- Bharucha KN, Tarr P, Zipursky SL (2008) A glucagon-like endocrine pathway in *Drosophila* modulates both lipid and carbohydrate homeostasis. *Journal of Experimental Biology* **211**, 3103-3110.
- Grönke S, Muller G, Hirsch J, et al. (2007) Dual lipolytic control of body fat storage and mobilization in *Drosophila*. *PLoS Biology* **5**, e137.
- Horner MA, Pardee K, Liu S, et al. (2009) The *Drosophila* DHR96 nuclear receptor binds cholesterol and regulates cholesterol homeostasis. *Genes & Development* **23**, 2711-2716.
- King-Jones K, Thummel CS (2005) Nuclear receptors - A perspective from *Drosophila*. *Nature Reviews Genetics* **6**, 311-323.
- King-Jones K, Horner MA, Lam G, Thummel CS (2006) The DHR96 nuclear receptor regulates xenobiotic responses in *Drosophila*. *Cell Metabolism* **4**, 37-48.
- Kolaczkowski B, Kern AD, Holloway AK, Begun DJ (2010) Genomic Differentiation Between Temperate and Tropical Australian Populations of *Drosophila melanogaster*. *Genetics* **187**, 245-260.
- Sieber MH, Thummel CS (2009) The DHR96 Nuclear Receptor Controls Triacylglycerol Homeostasis in *Drosophila*. *Cell Metabolism* **10**, 481-490.



Appendix S4

Examples of candidate genes involved in lipid metabolism[§]

*Lip2*¹

*Lip3*²

*Lsd-1*³

*Lsd-2*⁴

*Lsp1alpha*⁵

Shown are pairwise F_{ST} values of the candidate SNPs identified in the different population comparisons; red: Florida-Maine, blue: Florida-Pennsylvania, green: Pennsylvania-Maine.

Notes:

[§] For a review of lipid metabolism in *Drosophila* see Baker and Thummel (2007). It is important to note that high triglyceride content is associated with both improved resistance to starvation stress and with the expression of reproductive dormancy; natural diapause genotypes have higher triglyceride content than non-diapause lines; and flies from northern populations from the east coast of the US (Vermont) have a higher triglyceride content than flies from southern populations (Florida) (Schmidt *et al.* 2005)

¹ *Lip2*, *Lipase 2*; triglyceride lipase activity; for detailed information see: <http://flybase.org/reports/FBgn0024740.html>

² *Lip3*, *Lipase 3*; triglyceride lipase activity; for detailed information see: <http://flybase.org/reports/FBgn0023495.html>

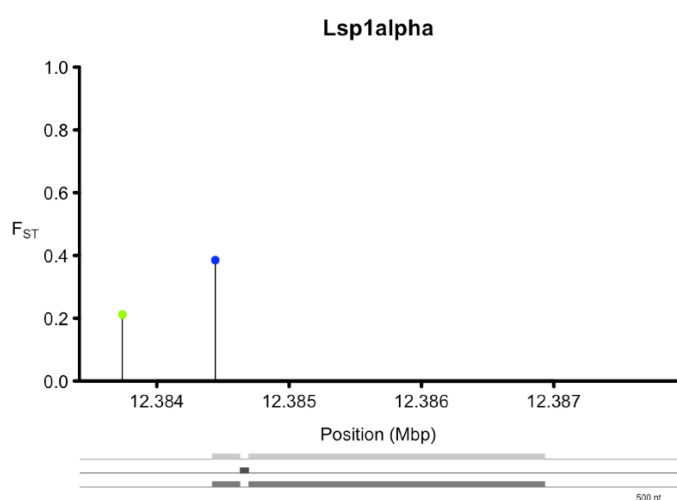
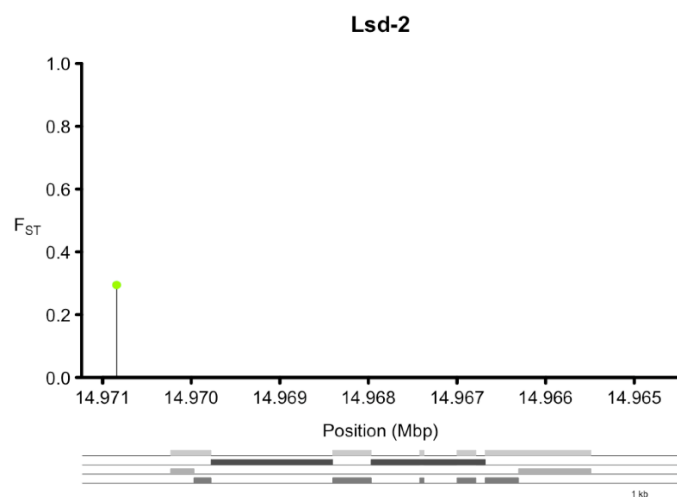
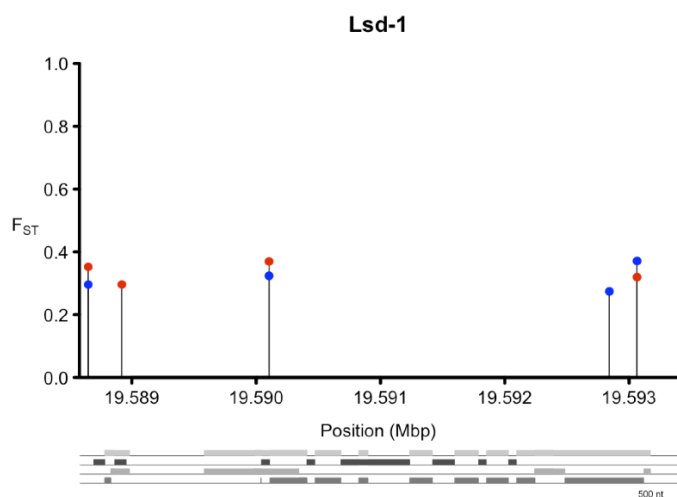
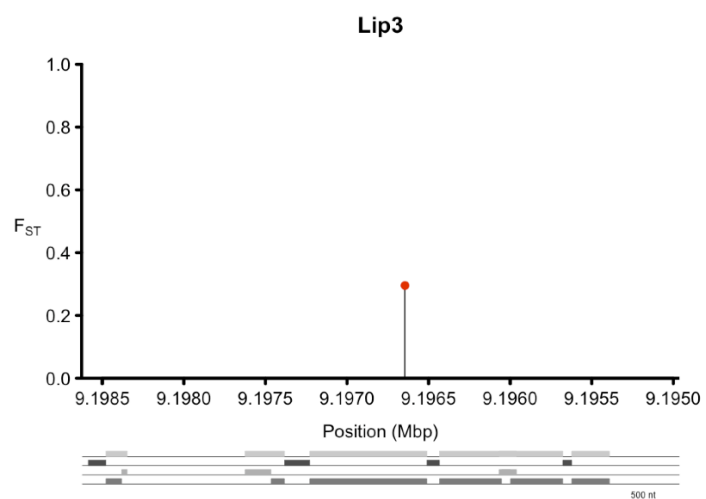
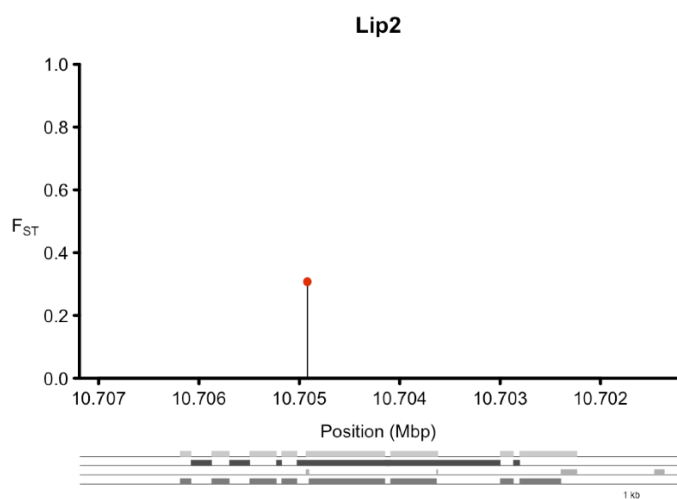
³ *Lsd-1*, *Lipid storage droplet-1*; regulation of lipid storage; see further information at: <http://flybase.org/reports/FBgn0039114.html>

⁴ *Lsd-2*, *Lipid storage droplet-2*; functional homolog of human Perilipin/ADRP; involved in the regulation of lipid storage; mutants have reduced lipid levels and starvation sensitive; gain of function/overexpression increased lipid levels and resistance to starvation (Teixeira *et al.* 2003, Grönke *et al.* 2003, Baker and Thummel 2007). See: <http://flybase.org/reports/FBgn0030608.html>

⁵ *Lsp1 alpha*, *Larval serum protein 1 α*; *Lsp1α*, together with the β and γ subunits of *Lsp1*, is expressed in the larval fat body and induced by ecdysone (see App. S2); it is a storage protein complex, associated with lipid droplets, that serves as a reservoir for amino acids and energy during metamorphosis (Burmester *et al.* 1999, Beller *et al.* 2006). For further information see: <http://flybase.org/reports/FBgn0002562.html>

References:

- Baker KD, Thummel CS (2007) Diabetic larvae and obese flies - Emerging studies of metabolism in *Drosophila*. *Cell Metabolism* **6**, 257-266.
- Beller M, Riedel D, Jansch L, Dieterich G, Wehland J, Jackle H, Kuhnlein RP (2006) Characterization of the *Drosophila* lipid droplet subproteome. *Molecular and Cellular Proteomics* **5**, 1082-1094.
- Burmester T, Antoniewski C, Lepesant JA (1999) Ecdysone-regulation of synthesis and processing of fat body protein 1, the larval serum protein receptor of *Drosophila melanogaster*. *European Journal of Biochemistry* **262**, 49-55.
- Grönke, S., Beller, M., Fellert, S., Ramakrishnan, H., Jackle, H., and Kuhnlein, R.P. (2003) Control of fat storage by a *Drosophila* PAT domain protein. *Current Biology* **13**, 603–606.
- Schmidt P, Matzkin L, Ippolito M, Eanes W (2005) Geographic variation in diapause incidence, life-history traits, and climatic adaptation in *Drosophila melanogaster*. *Evolution* **59**, 1721-1732.
- Teixeira, L., Rabouille, C., Rorth, P., Ephrussi, A., and Vanzo, N.F. (2003) *Drosophila* Perilipin/ADRP homologue Lsd2 regulates lipid metabolism. *Mechanisms of Development* **120**, 1071–1081.



Appendix S5

Examples of candidate genes involved in innate immunity (Toll/Imd signaling)[§]

*AttA*¹
*AttB*²
*Dif*³
*Dpt*⁴
*DptB*⁵
*Dro*⁶
*imd*⁷
Irc^{*8}
*PGRP-LA*⁹
*PGRP-LC*¹⁰
*PGRP-LF*¹¹
sick^{*12}
*TI*¹³
*Toll-4*¹⁴
*Tollo*¹⁵
*TotF*¹⁶

Shown are pairwise F_{ST} values of the candidate SNPs identified in the different population comparisons; red: Florida-Maine, blue: Florida-Pennsylvania, green: Pennsylvania-Maine.

Notes:

[§] For reviews of innate immunity in *Drosophila* see Hoffmann and Reichhart (2002), Hoffmann (2003), Kim and Kim (2005), Kaneko and Silverman (2005), and Ferrandon *et al.* (2007). Genes involved in innate immunity are known to exhibit a lot of genetic variation in natural populations, to be under strong natural selection, and to evolve rapidly (Lesser *et al.* 2006; Lazzaro 2008; Obbard *et al.* 2009). Both Turner *et al.* (2008) and Kolaczowski *et al.* (2011) find an overrepresentation of genes involved in innate immune response ("defense responses") in their analyses of clinal variation in *D. melanogaster*; this suggests that there might exist pervasive latitudinal variation in selection pressure imposed by pathogens. It also interesting to note that innate immunity in *Drosophila* is hormonally regulated by ecdysone signaling (Flatt *et al.* 2008) (see [Fig. S2](#)) and IIS/Foxo (Becker *et al.* 2010) (see [Fig. S1](#)).

* Also found by Kolaczowski et al. (2011)

¹ *AttA*, *Attacin A*; encodes an antimicrobial peptide; for more information see <http://flybase.org/reports/FBgn0012042.html>

² *AttB*, *Attacin B*; encodes an antimicrobial peptide; for more information see <http://flybase.org/reports/FBgn0041581.html>

³ *Dif*, *dorsal-related immunity factor*, a NF-κB-like transcription factor in the Toll signaling pathway; see <http://flybase.org/reports/FBgn0011274.html>

⁴ *Dpt*, *Diptericin*; encodes an antimicrobial peptide; for more information see <http://flybase.org/reports/FBgn0004240.html>

⁵ *DptB*, *Diptericin B*; encodes an antimicrobial peptide; see <http://flybase.org/reports/FBgn0034407.html>

⁶ *Dro*, *Drosocin*; encodes an antimicrobial peptide; see <http://flybase.org/reports/FBgn0010388.html>

⁷ *imd*, *immune deficiency*; protein of central function in the Imd signaling pathway; see <http://flybase.org/reports/FBgn0013983.html>

⁸ *Irc*, *immune-regulated catalase*; a gene involved in a key host defense system required during host-microbe interactions in the gastrointestinal tract (Ha et al. 2005 a,b); also found to vary clinally by Kolaczowski et al. (2011); also see <http://flybase.org/reports/FBgn0038465.html>

⁹⁻¹¹ *PGRP*, *peptidoglycan recognition proteins*; major proteins that detect bacterial cell wall peptidoglycans; acting upstream of the Imd and Toll in the Imd/Toll immune pathways (e.g., Kaneko and Silverman 2005). Also see: <http://flybase.org/reports/FBgn0035975.html>; <http://flybase.org/reports/FBgn0035976.html>; <http://flybase.org/reports/FBgn0035977.html>

¹² *sick*, *sickie*; involved in the response to Gram-negative bacteria (Foley and Farrell 2004); also found to be clinal by Kolaczowski et al. (2001). See: <http://flybase.org/reports/FBgn0263873.html>

¹³ *TL*, *Toll*; defining member of the Toll immune signaling pathway; critical for anti-microbial peptide gene expression after Gram-positive and fungal infections; activates Toll signaling by binding to Spätzle ligand (e.g., Kaneko and Silverman 2005). See: <http://flybase.org/reports/FBgn0262473.html>

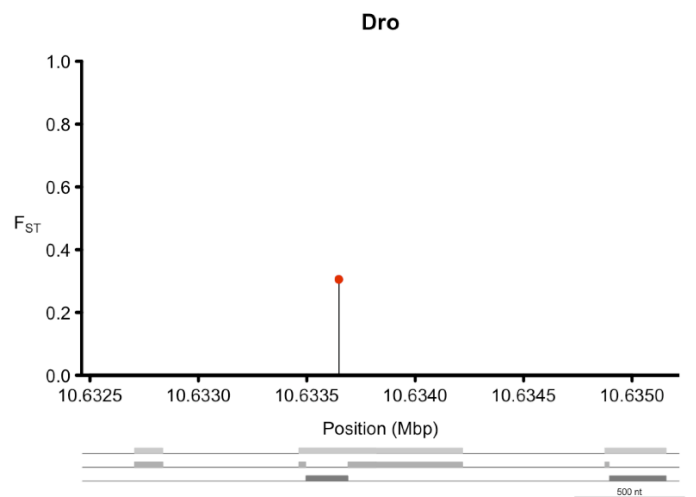
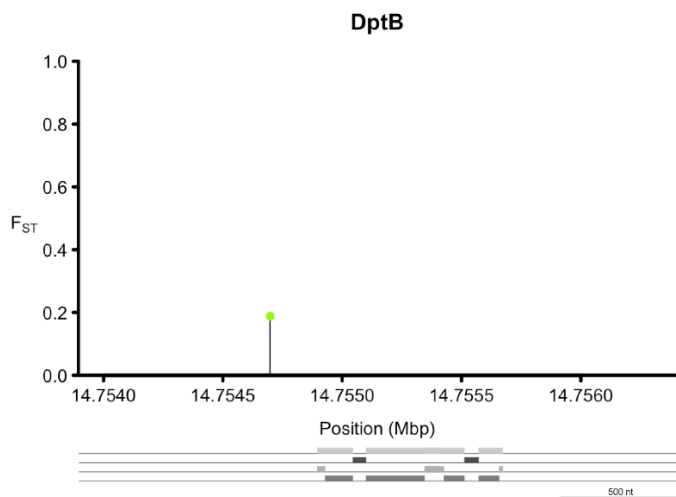
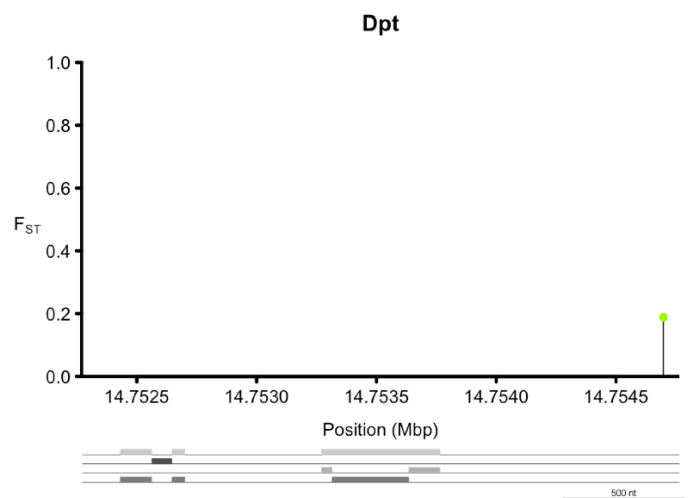
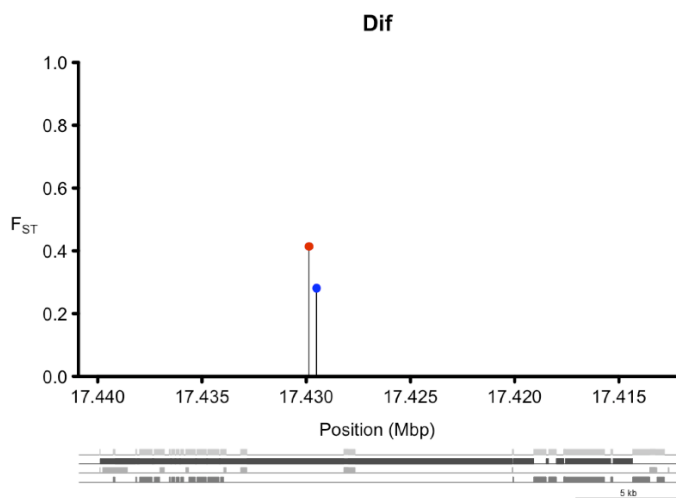
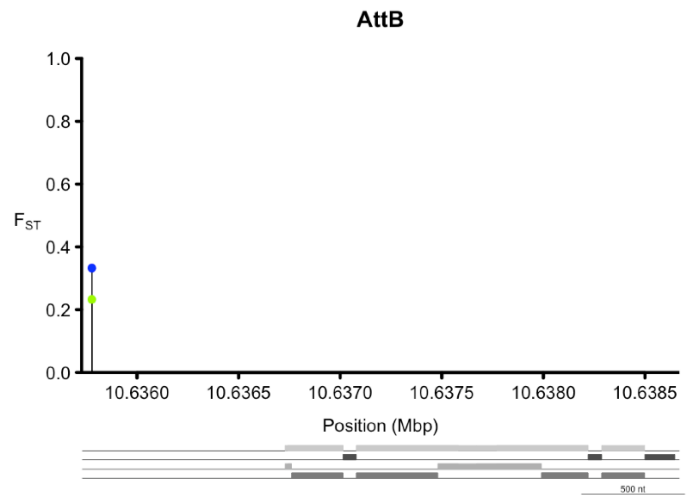
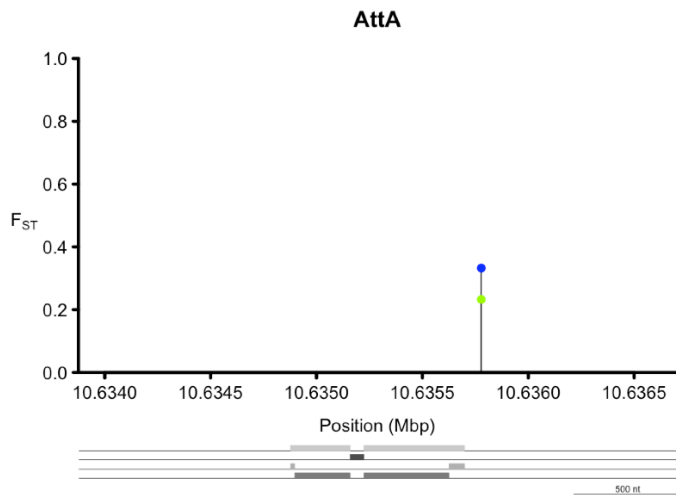
¹⁴ *Toll-4*; potential role in innate immunity unclear. For further information see <http://flybase.org/reports/FBgn0032095.html>

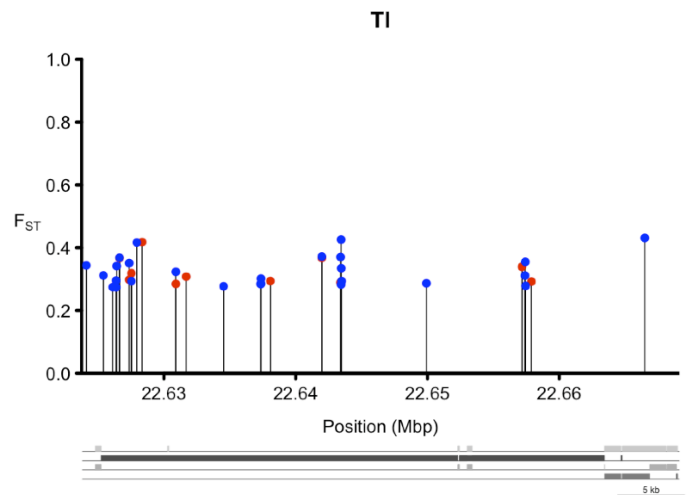
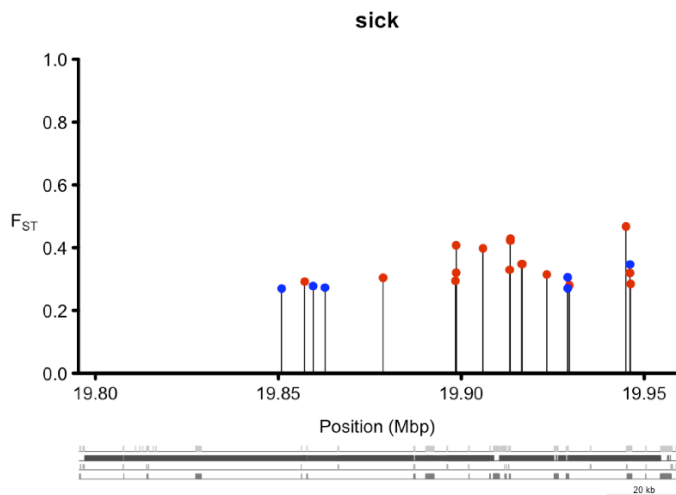
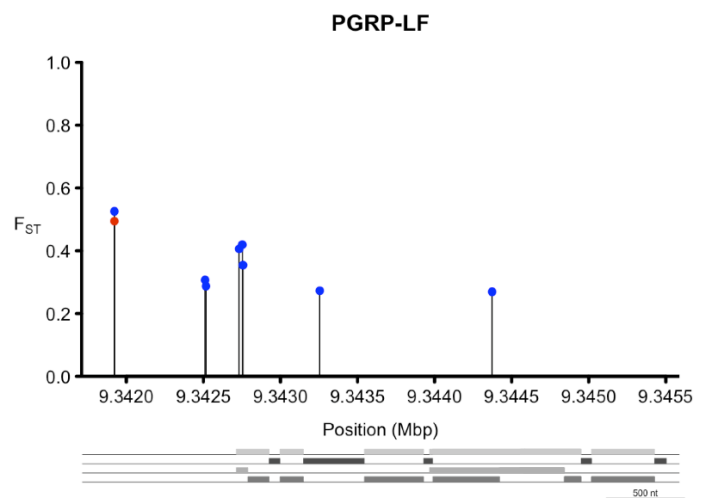
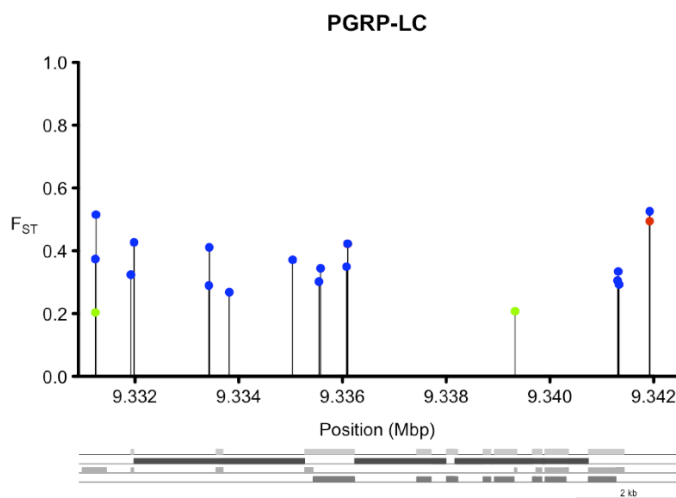
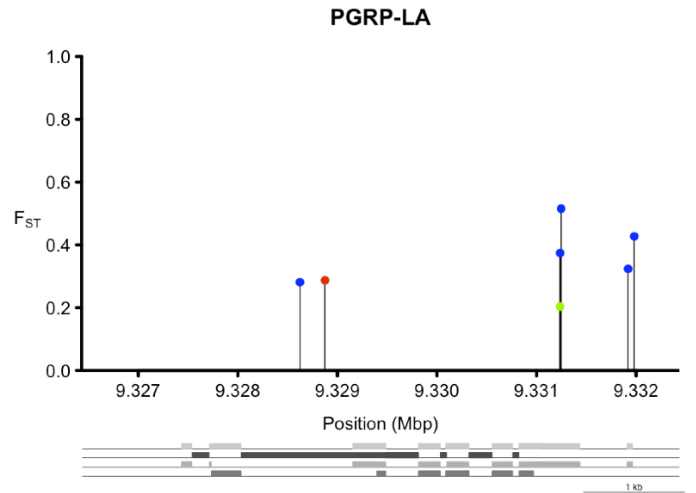
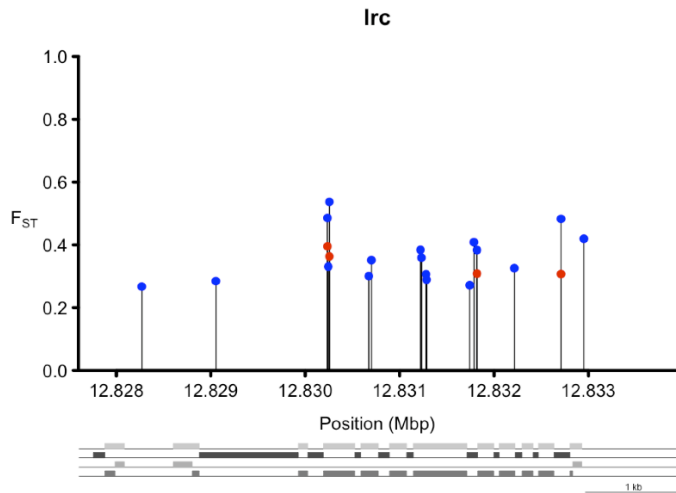
¹⁵ *Tollo*, or *Toll-8*; negative regulator of the antimicrobial response (Akhoyari et al. 2011). See: <http://flybase.org/reports/FBgn0029114.html>

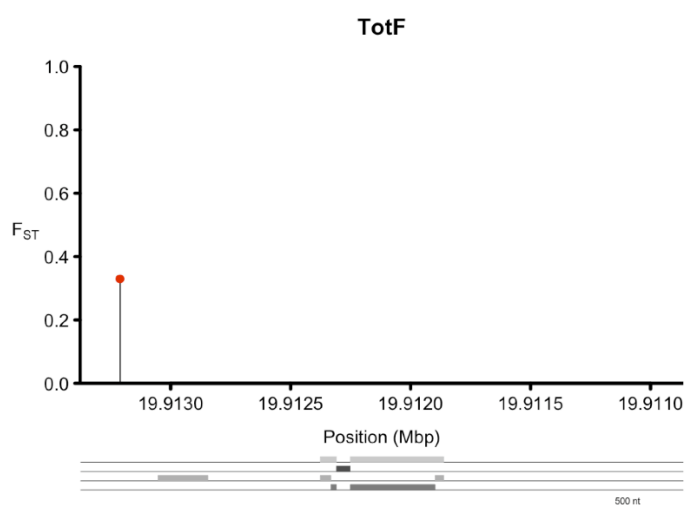
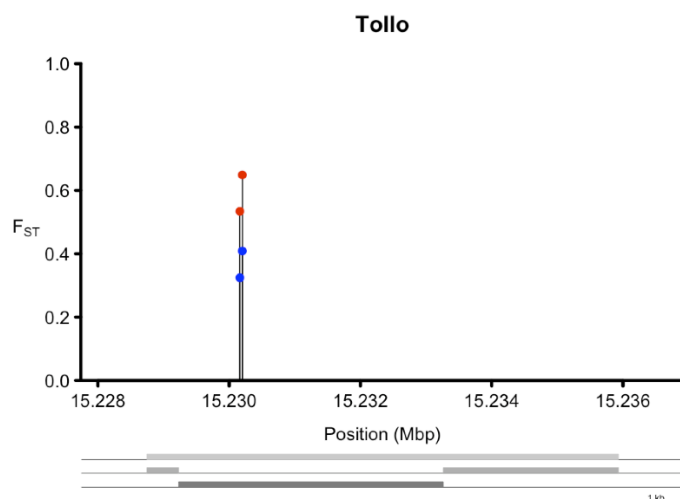
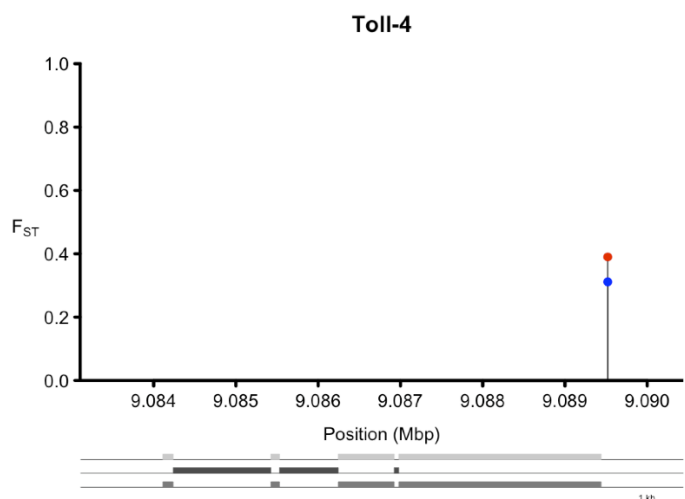
¹⁶ *TotF*, *Turandot F*; a stress induced humoral factor; role in immunity somewhat unclear although has been found to induced by infection. See <http://flybase.org/reports/FBgn0044811.html>

References:

- Becker T, Loch G, Beyer M, et al. (2010) FOXO-dependent regulation of innate immune homeostasis. *Nature* **463**, 369-373.
- Akhouayri I, Turc C, Royet J, Charroux B (2011) Toll-8/Tollo Negatively Regulates Antimicrobial Response in the *Drosophila* Respiratory Epithelium. *PLoS Pathogens* **7**, e1002319.
- Ferrandon D, Imler J, Hetru C, Hoffmann J (2007) The *Drosophila* systemic immune response: sensing and signaling during bacterial and fungal infections. *Nature Reviews Immunology* **7**, 862-874.
- Flatt T, Heyland A, Rus F, et al. (2008) Hormonal regulation of the humoral innate immune response in *Drosophila melanogaster*. *Journal of Experimental Biology* **211**, 2712-2724.
- Foley E, O'Farrell PH (2004) Functional dissection of an innate immune response by a genome-wide RNAi screen. *PLoS Biology* **2**, E203.
- Ha E-M, Oh C-T, Bae YS, Lee W-J (2005a) A Direct Role for Dual Oxidase in *Drosophila* Gut Immunity. *Science* **310**, 847-850.
- Ha E-M, Oh C-T, Ryu J-H, et al. (2005b) An Antioxidant System Required for Host Protection against Gut Infection in *Drosophila*. *Developmental Cell* **8**, 125-132.
- Hoffmann JA (2003) The immune response of *Drosophila*. *Nature* **426**, 33-38.
- Hoffmann JA, Reichhart JM (2002) *Drosophila* innate immunity: an evolutionary perspective. *Nature Immunology* **3**, 121-126.
- Kim T, Kim YJ (2005) Overview of innate immunity in *Drosophila*. *Journal of Biochemistry and Molecular Biology* **38**, 121-127.
- Kaneko T, Silverman N (2005) Bacterial recognition and signalling by the *Drosophila* IMD pathway. *Cellular Microbiology* **7**, 461-469.
- Kolaczowski B, Kern AD, Holloway AK, Begun DJ (2010) Genomic Differentiation Between Temperate and Tropical Australian Populations of *Drosophila melanogaster*. *Genetics* **187**, 245-260.
- Lazzaro BP (2008) Natural selection on the *Drosophila* antimicrobial immune system. *Current Opinion in Microbiology* **11**, 284-289.
- Lesser KJ, Paiusi IC, Leips J (2006) Naturally occurring genetic variation in the age-specific immune response of *Drosophila melanogaster*. *Aging Cell* **5**, 293-295.
- Obbard DJ, Welch JJ, Kim K-W, Jiggins FM (2009) Quantifying Adaptive Evolution in the *Drosophila* Immune System. *PLoS Genetics* **5**, e1000698.
- Turner TL, Levine MT, Eckert ML, Begun DJ (2008) Genomic Analysis of Adaptive Differentiation in *Drosophila melanogaster*. *Genetics* **179**, 455-473.







Appendix S6

Examples of candidate genes involved in epidermal growth factor (EGFR) signaling[§]

ed^{*1}

*EGFR*²

S^{*3}

Shown are pairwise F_{ST} values of the candidate SNPs identified in the different population comparisons; red: Florida-Maine, blue: Florida-Pennsylvania, green: Pennsylvania-Maine.

Notes:

[§] EGFR signaling is of major importance for the regulation of differentiation of many tissues during *Drosophila* development; for a review of EGFR signaling see, for example, Schweizer and Shilo (1997) and Shilo (2003)

* Also found by Kolaczowski et al. (2011)

¹ *ed*, *echinoid*; encodes a transmembrane protein and cell adhesion molecule that antagonizes EGFR signaling; for further information see: <http://flybase.org/reports/FBgn0000547.html>

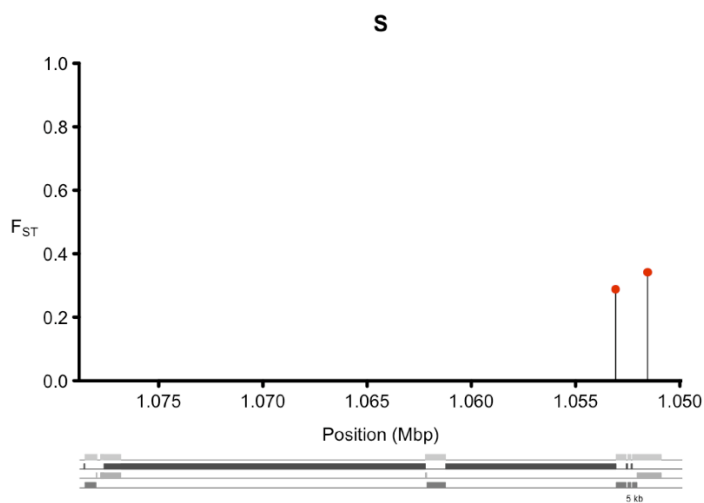
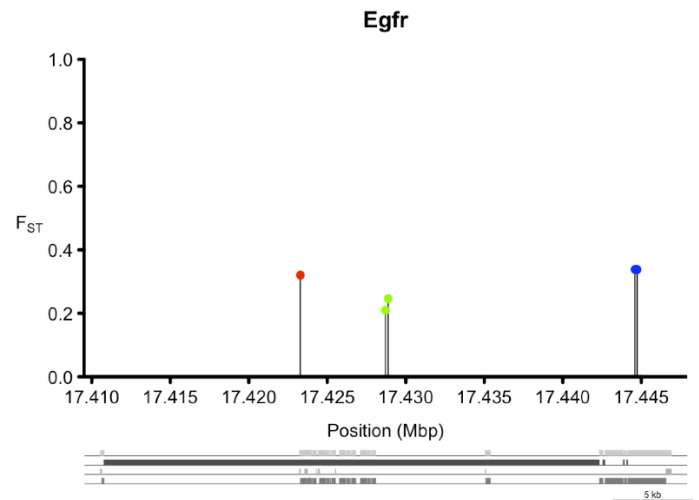
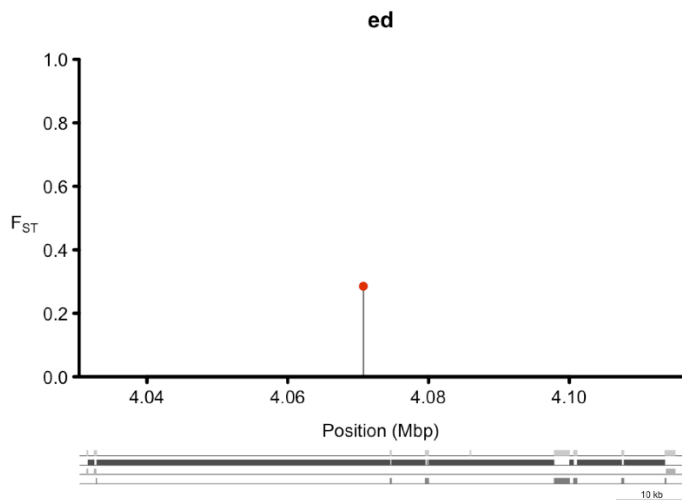
² *EGFR*, *epidermal growth factor receptor*; the defining member of the EGFR pathway; also found, along with other genes in this pathway, by Turner et al. (2011) in a study of artificial selection for body size. Might also be involved in starvation stress resistance (Mackay et al. 2012). For further details see: <http://flybase.org/reports/FBgn0003731.html>

³ *S*, *Star*; essential gene implicated in trafficking of ligands for EGFR signaling. For details see: <http://flybase.org/reports/FBgn0003310.html>

References:

- Kolaczowski B, Kern AD, Holloway AK, Begun DJ (2010) Genomic Differentiation Between Temperate and Tropical Australian Populations of *Drosophila melanogaster*. *Genetics* **187**, 245-260.
- Mackay TFC, Richards S, Stone EA, et al. (2012) The *Drosophila melanogaster* Genetic Reference Panel. *Nature* **482**, 173-178.
- Schweitzer R, Shilo BZ (1997) A thousand and one roles for the *Drosophila* EGF receptor. *Trends in Genetics* **13**, 191-196.
- Shilo B-Z (2003) Signaling by the *Drosophila* epidermal growth factor receptor pathway during development. *Experimental Cell Research* **284**, 140-149.

Turner TL, Stewart AD, Fields AT, Rice WR, Tarone AM (2011) Population-Based Resequencing of Experimentally Evolved Populations Reveals the Genetic Basis of Body Size Variation in *Drosophila melanogaster*. *PLoS Genetics* **7**, e1001336.



Appendix S7

Examples of candidate genes involved in JAK/STAT signaling[§]

crb^{*1}

CycE^{*2}

Ptp61F^{*3}

Stat92E^{*4}

tkv^{*5}

upd2^{*6}

*upd3*⁷

Shown are pairwise F_{ST} values of the candidate SNPs identified in the different population comparisons; red: Florida-Maine, blue: Florida-Pennsylvania, green: Pennsylvania-Maine.

Notes:

[§] For reviews of JAK/STAT signaling in *Drosophila* see, for example, Zeidler *et al.* (2000) and Arbouzova and Zeidler (2006). JAK-STAT signaling plays a major role in the signal transduction of cytokine and growth factor signals; the pathway is involved in a variety of developmental and physiological processes and functions, for example, in the regulation of cell proliferation, stem cell maintenance, immunity, sex determination, embryonic segmentation, larval hematopoiesis, and ommatidia polarity, etc. (Zeidler *et al.* 2000; Arbouzova and Zeidler 2006). It is noteworthy that Kolaczowski *et al.* (2011) find strong differentiation along the Australian cline for several genes in this pathway and that we find the same pattern for the US east coastal cline.

* Also found by Kolaczowski *et al.* (2011)

¹ *crb*, *crumbs*; a modifier of JAK/STAT signaling; also involved in salvador/hippo/warts signaling; identified by Kolaczowski *et al.* (2011) to be clinal as well as by Turner *et al.* (2011) in an artificial selection experiment on body size. See: <http://flybase.org/reports/FBgn0259685.html>

² *CycE*, *Cyclin E*; interacts with *Stat92E* (cf. Arbouzova and Zeidler 2006); also found by Kolaczowski *et al.* (2011) to be clinal. For further details see: <http://flybase.org/reports/FBgn0010382.html>

³ *Ptp61F*, *Protein tyrosine phosphatase 61F*; acts as a suppressor of STAT92E-dependent transcription (cf. Arbouzova and Zeidler 2006); also identified by Kolaczowski *et al.* (2011) to be clinal. For more information see <http://flybase.org/reports/FBgn0003138.html>

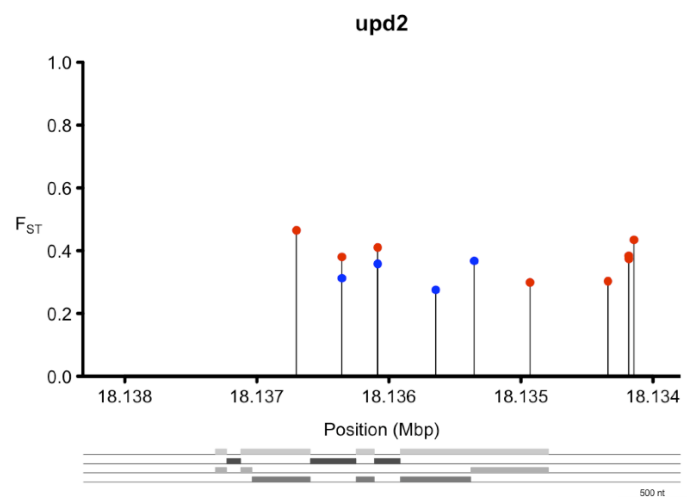
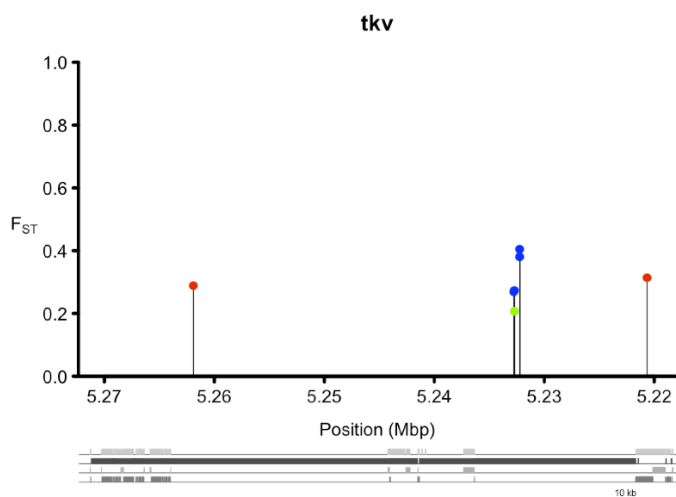
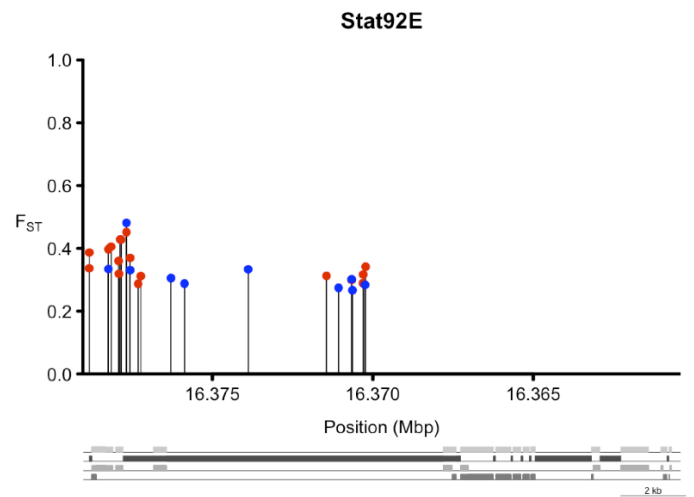
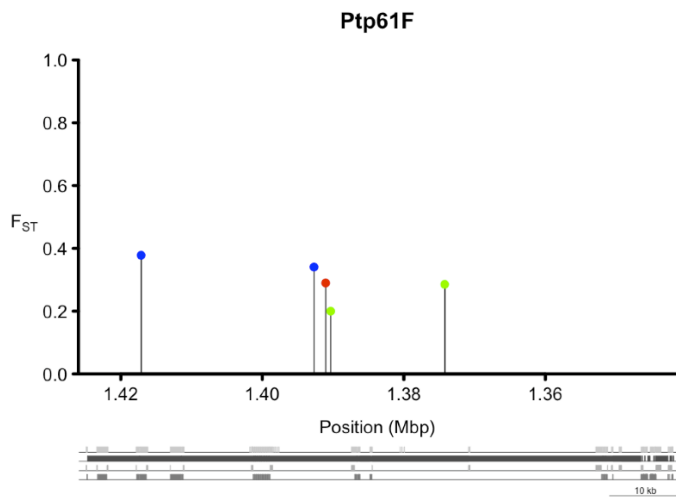
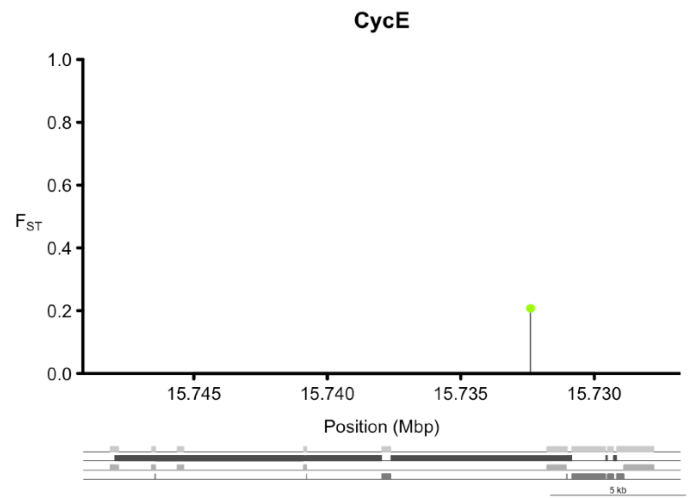
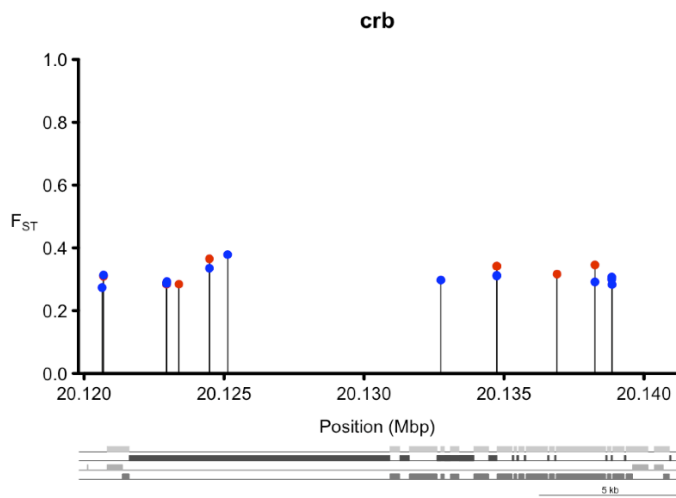
⁴ *Stat92E*; major transcription factor involved in JAK/STAT signaling (cf. Arbouzova and Zeidler 2006); also identified by Kolaczowski *et al.* (2011). For more information see: <http://flybase.org/reports/FBgn0016917.html>

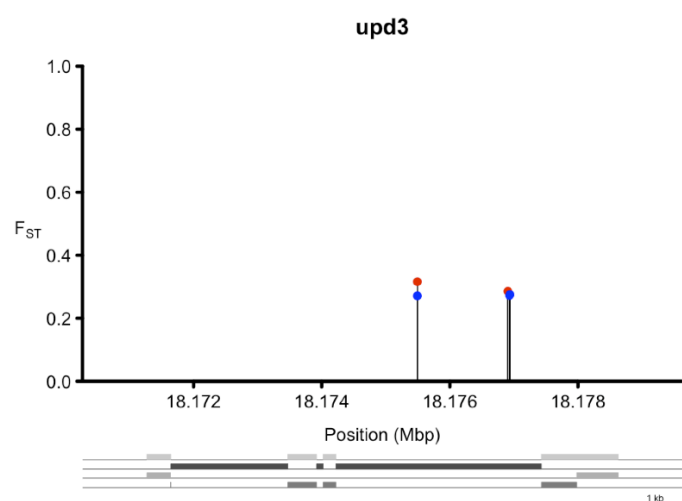
⁵ *tkv*, *thickveins*; involved in TGF β /BMP signaling (see [ES8]), a modifier of JAK/STAT signaling; also identified by Kolaczowski *et al.* (2011). For more information see: <http://flybase.org/reports/FBgn0003716.html>

⁶⁻⁷ *upd2* and *upd3*, *unpaired 2* and *unpaired 3*; together with *upd*, the genes *upd2* and *upd3* encode the three JAK/STAT ligands; *upd2* seems to be a freely diffusible ligand of the JAK/STAT receptor *dome*; *upd3* is less well understood but expressed in the developing gonads, the larval lymph and in circulating haemocytes following septic injury (see Arbouzova and Zeidler 2006). Interestingly, fat body specific activation of JAK/STAT signaling results in the expression of several antimicrobial peptides (see [ES5]) and requires *upd3*, but not *upd* or *upd2* (cf. Arbouzova and Zeidler 2006). For details see: <http://flybase.org/reports/FBgn0030904.html>; <http://flybase.org/reports/FBgn0053542.html>

References:

- Arbouzova NI, Zeidler MP (2006) JAK/STAT signalling in *Drosophila*: insights into conserved regulatory and cellular functions. *Development* **133**, 2605-2616.
- Kolaczowski B, Kern AD, Holloway AK, Begun DJ (2010) Genomic Differentiation Between Temperate and Tropical Australian Populations of *Drosophila melanogaster*. *Genetics* **187**, 245-260.
- Turner TL, Stewart AD, Fields AT, Rice WR, Tarone AM (2011) Population-Based Resequencing of Experimentally Evolved Populations Reveals the Genetic Basis of Body Size Variation in *Drosophila melanogaster*. *PLoS Genetics* **7**, e1001336.
- Zeidler MP, Bach EA, Perrimon N (2000) The roles of the *Drosophila* JAK/STAT pathway. *Oncogene* **19**, 2598-2606.





Appendix S8

Examples of candidate genes involved in TGF- β /BMP signaling[§]

*Dad*¹

dally^{*2}

dpp^{*3}

tkv^{*4}

Shown are pairwise F_{ST} values of the candidate SNPs identified in the different population comparisons; red: Florida-Maine, blue: Florida-Pennsylvania, green: Pennsylvania-Maine.

Notes:

[§] For a review of this pathway see Derynck and Miyazono (2008). The TGF- β /BMP superfamily represents a major signaling pathway which regulates many developmental and cellular processes, including early axis specification, cell shape and proliferation, apoptosis, and differentiation (Derynck and Miyazono 2008). The ligand superfamily consists of two main subfamilies, the BMP and the TGF- β /activin subfamily (Feng and Derynck 2005).

* Also found by Kolaczowski et al. (2011)

¹ *Dad*, daughters against dpp; antagonizes dpp (decapentaplegic) and Mad (mothers against dpp); see: <http://flybase.org/reports/FBgn0020493.html>

² *dally*, division abnormally delayed; also found by Turner et al. (2011) in an artificial selection experiment on body size in *D. melanogaster* and by Kolaczowski et al. (2011) to vary clinally. See: <http://flybase.org/reports/FBgn0263930.html>

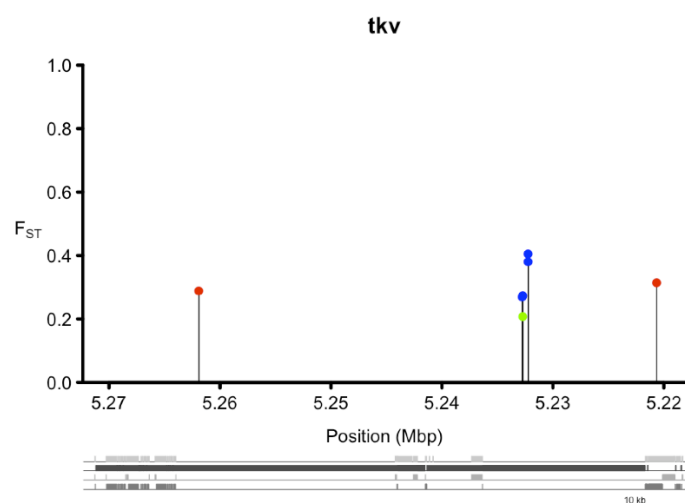
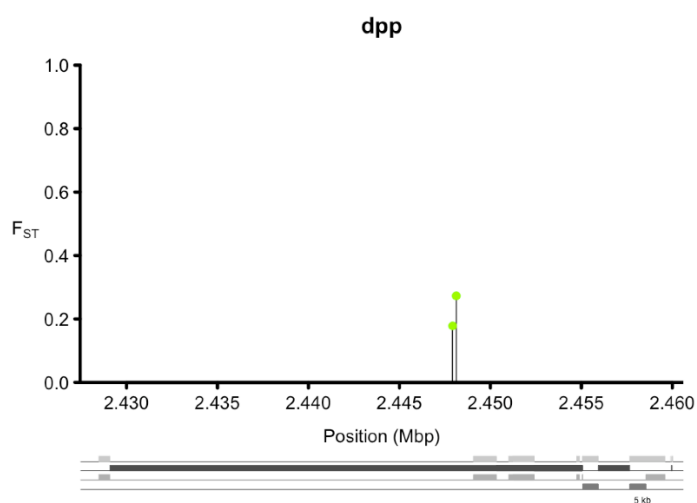
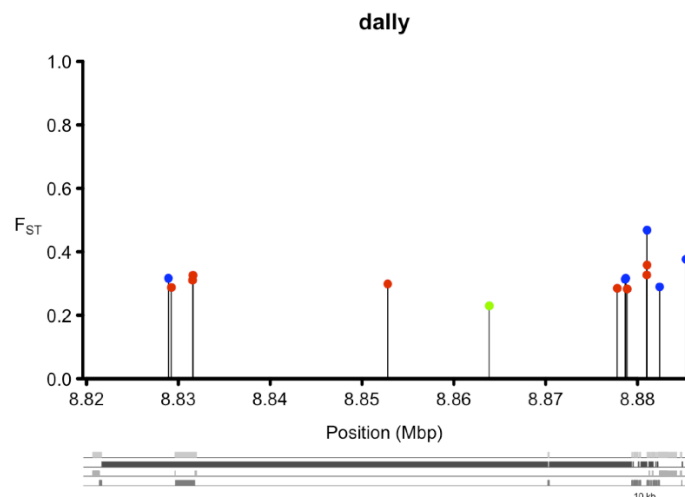
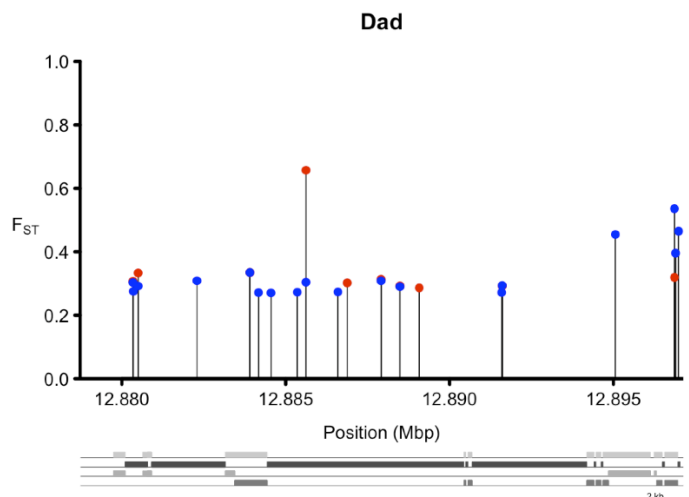
³ *dpp*, decapentaplegic; a BMP (bone morphogenetic protein) 2,4 ortholog and ligand; found by Kolaczowski et al. (2011) to vary clinally. For details see: <http://flybase.org/reports/FBgn0000490.html>

⁴ *tkv*, thickveins; a type 1 TGF- β /BMP receptor; found by Kolaczowski et al. (2011) to vary clinally. See: <http://flybase.org/reports/FBgn0003716.html>

References:

Derynck R, Miyazono K (2008) *The TGF- β Family*. Cold Spring Harbor Laboratory Press.
Feng XH, Derynck R (2005) Specificity and versatility in TGF-beta signaling through Smads. *Annual Review of Cell and Developmental Biology* **21**, 659-693.

- Kolaczowski B, Kern AD, Holloway AK, Begun DJ (2011) Genomic Differentiation Between Temperate and Tropical Australian Populations of *Drosophila melanogaster*. *Genetics* **187**, 245-260
- Turner TL, Stewart AD, Fields AT, Rice WR, Tarone AM (2011) Population-Based Resequencing of Experimentally Evolved Populations Reveals the Genetic Basis of Body Size Variation in *Drosophila melanogaster*. *PLoS Genetics* **7**, e1001336.



Appendix S9

Examples of candidate genes involved in torso signaling[§]

pnt^{*1}

tld^{*2}

tup^{*3}

Shown are pairwise F_{ST} values of the candidate SNPs identified in the different population comparisons; red: Florida-Maine, blue: Florida-Pennsylvania, green: Pennsylvania-Maine.

Notes:

[§] For reviews of torso signaling see, for example, Duffy and Perrimon (1994) and Li (2005). The *torso* (*tor*) gene, the defining member of the pathway, is a maternally contributed receptor tyrosine kinase (RTK) required, together with its ligand *trunk*, for cell fate specification in the terminal regions (head and tail) of the early *Drosophila* embryo (e.g., Li 2005). The pathway is also known to regulate metamorphosis and body size. Interestingly, the embryonic trunk ligand is related to prothoracicotropic hormone (PTTH), a hormone that regulates ecdysone production (see Qi & ES2) in the larval prothoracic gland and that is crucially important for metamorphosis; PTTH has been found to initiate metamorphosis by activation of the Torso/ERK pathway, and torso turns out to be the PTTH receptor (Rewitz et al. 2009).

* Also found by Kolaczowski et al. (2011)

¹ *pnt*, *pointed*; found to be clinal by Turner et al. (2008) and by Kolaczowski et al. (2011); has also been found in a screen of *P*-element insertion lines and in a GWAS study based on the DGRP lines to affect starvation resistance (Harbison et al. 2004). See: <http://flybase.org/reports/FBgn0003118.html>

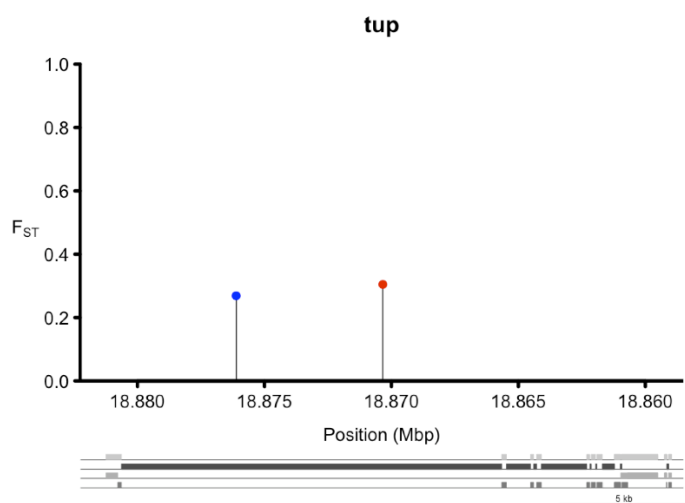
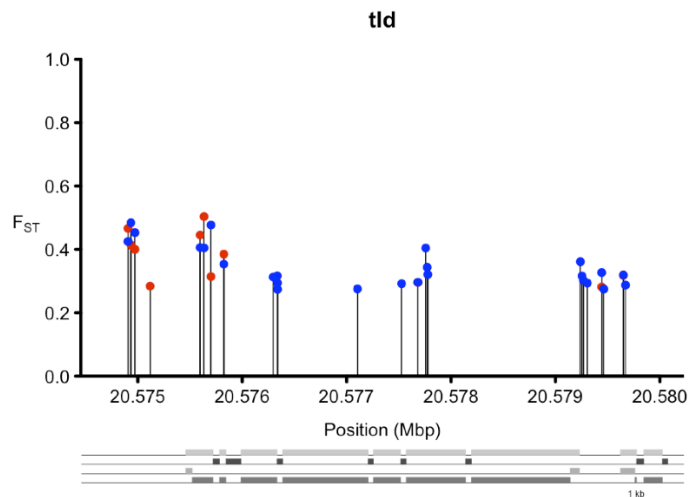
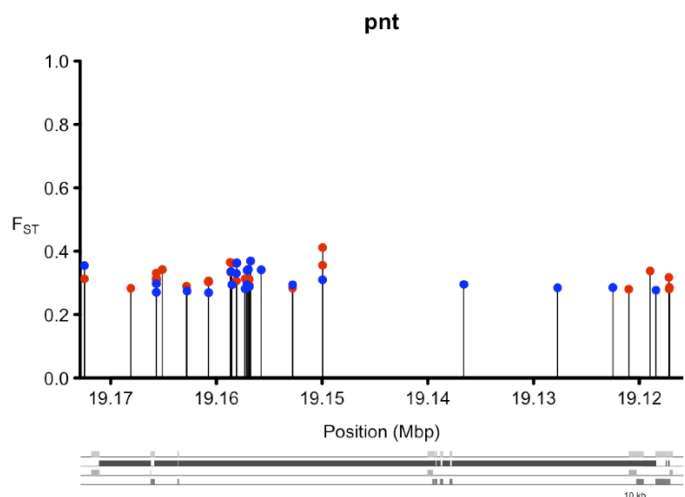
² *tld*, *tolloid*; also interacts with TGF- β /BMP signaling (Qi & ES2) and found to be clinal by Kolaczowski et al. (2011); see: <http://flybase.org/reports/FBgn0003719.html>

³ *tup*, *tailup*; found to be clinal by Kolaczowski et al. (2011). For details see: <http://flybase.org/reports/FBgn0003896.html>

References:

Duffy JB, Perrimon N (1994) The Torso Pathway in *Drosophila*: Lessons on Receptor Tyrosine Kinase Signaling and Pattern Formation. *Developmental Biology* **166**, 380-395.

- Harbison ST, Yamamoto AH, Fanara JJ, Norga KK, Mackay TFC (2004) Quantitative Trait Loci Affecting Starvation Resistance in *Drosophila melanogaster*. *Genetics* **166**, 1807-1823.
- Kolaczkowski B, Kern AD, Holloway AK, Begun DJ (2011) Genomic Differentiation Between Temperate and Tropical Australian Populations of *Drosophila melanogaster*. *Genetics* **187**, 245-260
- Mackay TFC, Richards S, Stone EA, et al. (2012) The *Drosophila melanogaster* Genetic Reference Panel. *Nature* **482**, 173-178.
- Li WX (2005) Functions and mechanisms of receptor tyrosine kinase Torso signaling: Lessons from *Drosophila* embryonic terminal development. *Developmental Dynamics* **232**, 656-672.
- Rewitz KF, Yamanaka N, Gilbert LI, O'Connor MB (2009) The Insect Neuropeptide PTTH Activates Receptor Tyrosine Kinase Torso to Initiate Metamorphosis. *Science* **326**, 1403-1405.
- Turner TL, Levine MT, Eckert ML, Begun DJ (2008) Genomic Analysis of Adaptive Differentiation in *Drosophila melanogaster*. *Genetics* **179**, 455-473.



Appendix S10

Examples of candidate genes involved in the circadian clock / rhythm[§]

*Clk*¹

cry^{*2}

timeless^{*3}

timeout^{*4}

Shown are pairwise F_{ST} values of the candidate SNPs identified in the different population comparisons; red: Florida-Maine, blue: Florida-Pennsylvania, green: Pennsylvania-Maine.

Notes:

[§] For reviews of the circadian clock, its molecular genetics, physiology, and environmental implications, see Justin (2001), Hardin (2005), Kyriacou *et al.* (2008) and Emerson *et al.* (2009). Interestingly, multiple studies have found that genes in this pathway vary strongly clinally across latitude (see Costa *et al.* 1992, Sawyer *et al.* 1997, Sandrelli *et al.* 2007, Tauber *et al.* 2007, Turner *et al.* 2008, Kolaczowski *et al.* 2011) and to be involved in the photoperiodic regulation of reproductive dormancy (ovarian diapause) in *D. melanogaster* (see Sandrelli *et al.* 2007, Tauber *et al.* 2007, Emerson *et al.* 2009, Schmidt 2011). Consistent with previous findings (Sandrelli *et al.* 2007, Tauber *et al.* 2007, Turner *et al.* 2008, Kolaczowski *et al.* 2011) we find evidence for clinal variation at the *timeless*, *timeout* and *cryptochrome* loci and we provide new evidence for potential clinal variation at the *clock* locus. However, in contrast to several previous studies (e.g., Costa *et al.* 1992, Sawyer *et al.* 1997, Turner *et al.* 2008), we do not observe significant clinal variation for *period* (*per*). However, this might be due to our rather stringent criteria for defining candidate SNPs/genes: the highest F_{ST} values for individual SNPs in *period* in our data are: (a) one SNP with $F_{ST} = 0.32$ (Pennsylvania-Maine), (b) 0.25 (Florida-Pennsylvania), and (c) 0.2 (Florida-Maine) – these are substantial F_{ST} values indicative of strong differentiation. However, although all three SNPs have significant FET P -values in our analysis, they are all above our FDR threshold; moreover, two of them (b, c) do not fulfill our 0.5% F_{ST} outlier threshold (cutoff: $F_{ST} = 0.26$ for b, and $F_{ST} = 0.28$ for c).

* Also found by Kolaczowski *et al.* (2011)

¹ *Clk*, *clock*; no clinal variation found in this gene for the Australian cline (Weeks *et al.* 2006). See: <http://flybase.org/reports/FBgn0023076.html>

² *cry*, *cryptochrome*; affects circadian resetting and photosensitivity; found to be clinal by Kolaczowski *et al.* (2011). For detailed information see: <http://flybase.org/reports/FBgn0025680.html>

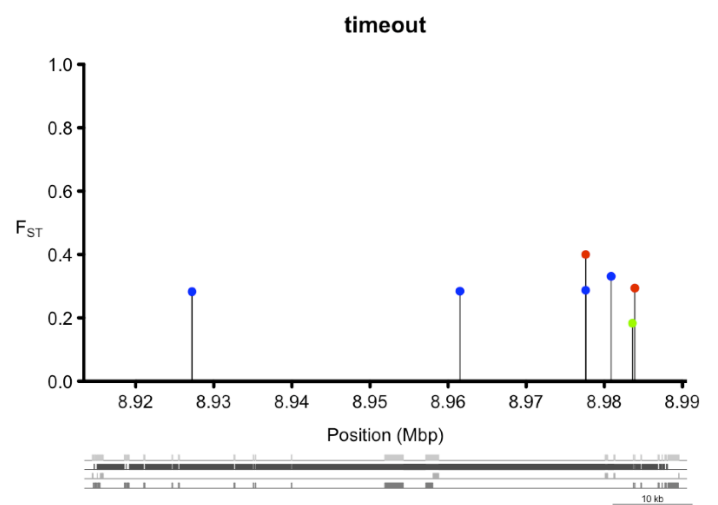
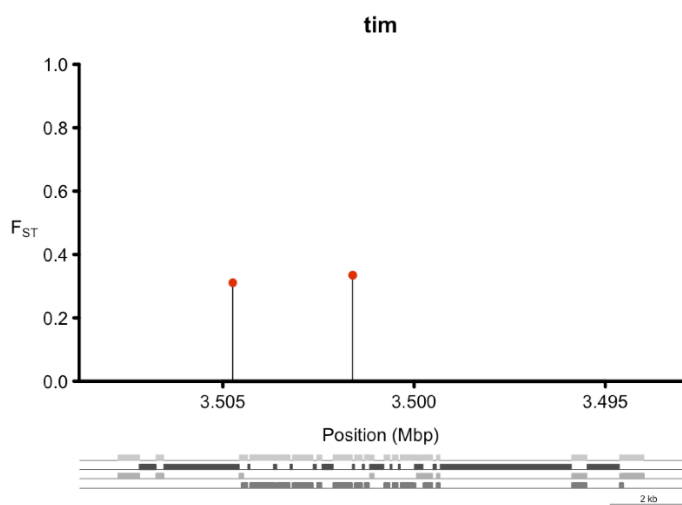
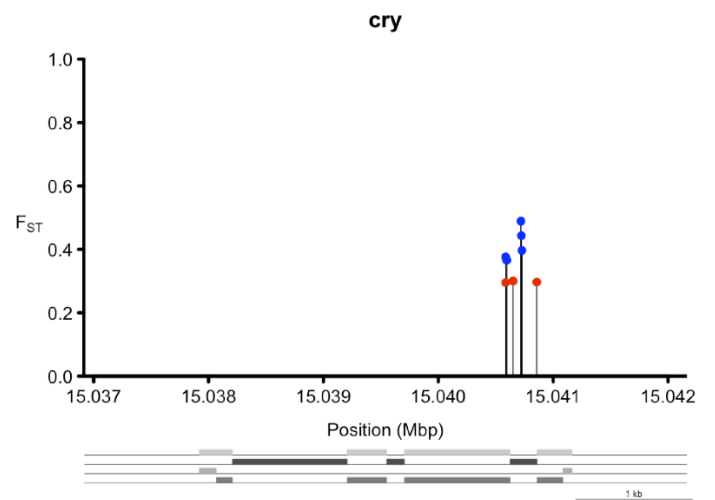
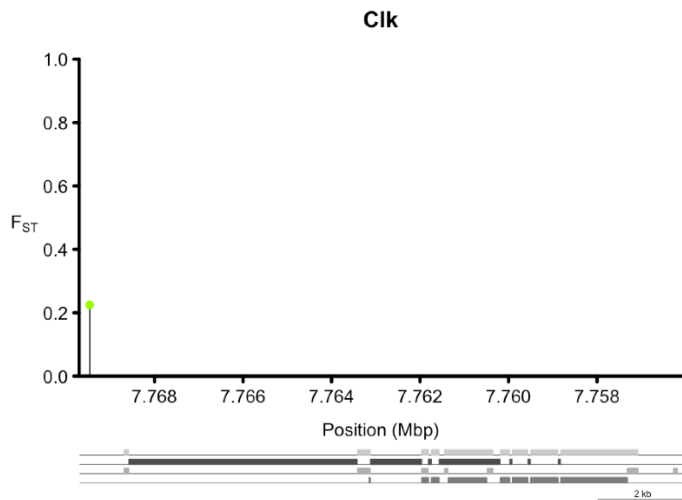
³ *tim*, *timeless*; found to be clinal by Sandrelli et al. (2007), Tauber et al. (2007), and Kolaczowski et al. (2011); known to affect reproductive (ovarian) dormancy (Sandrelli et al. 2007, Tauber et al. 2007). For details see: <http://flybase.org/reports/FBgn0014396.html>

⁴ *timeout*, also known as *timeless2*; involved in circadian photoreception (Benna et al. 2010); found to be clinal by Turner et al. (2008) and to harbor clinal copy number variation by Kolaczowski et al. (2011). For details see: <http://flybase.org/reports/FBgn0038118.html>

References:

- Benna C, Bonaccorsi S, Wülbeck C, et al. (2010) *Drosophila timeless2* Is Required for Chromosome Stability and Circadian Photoreception. *Current Biology* **20**, 346-352.
- Costa R, Peixoto AA, Barbuiani G, Kyriacou CP (1992) A Latitudinal Cline in a *Drosophila* Clock Gene. *Proceedings: Biological Sciences* **250**, 43-49.
- Emerson KJ, Bradshaw WE, Holzapfel CM (2009) Complications of complexity: integrating environmental, genetic and hormonal control of insect diapause. *Trends in Genetics* **25**, 217-225.
- Hardin PE (2005) The Circadian Timekeeping System of *Drosophila*. *Current Biology* **15**, R714-R722.
- Justin B (2001) The *Drosophila* circadian clock: what we know and what we don't know. *Seminars in Cell and Developmental Biology* **12**, 287-293.
- Kolaczowski B, Kern AD, Holloway AK, Begun DJ (2011) Genomic Differentiation Between Temperate and Tropical Australian Populations of *Drosophila melanogaster*. *Genetics* **187**, 245-260.
- Kyriacou CP, Peixoto AA, Sandrelli F, Costa R, Tauber E (2008) Clines in clock genes: fine-tuning circadian rhythms to the environment. *Trends in Genetics* **24**, 124-132.
- Sandrelli F, Tauber E, Pegoraro M, et al. (2007) A molecular basis for natural selection at the *timeless* locus in *Drosophila melanogaster*. *Science* **316**, 1898-1900.
- Sawyer LA, Hennessy JM, Peixoto AA, et al. (1997) Natural Variation in a *Drosophila* Clock Gene and Temperature Compensation. *Science* **278**, 2117-2120.
- Schmidt PS (2011) Evolution and mechanisms of insect reproductive diapause: a plastic and pleiotropic life history syndrome. In *Mechanisms of Life History Evolution* (T Flatt, A Heyland, eds.). Pp. 230-242. Oxford: Oxford University Press.
- Tauber E, Zordan M, Sandrelli F, et al. (2007) Natural selection favors a newly derived timeless allele in *Drosophila melanogaster*. *Science* **316**, 1895-1898.
- Turner TL, Levine MT, Eckert ML, Begun DJ (2008) Genomic Analysis of Adaptive Differentiation in *Drosophila melanogaster*. *Genetics* **179**, 455-473.

Weeks AR, McKechnie SW, Hoffmann AA (2006) In search of clinal variation in the period and clock timing genes in Australian *Drosophila melanogaster* populations. *Journal of Evolutionary Biology* **19**, 551-557.



Appendix S11

Examples of candidate genes involved in learning and memory[§]

*dnc*¹

*DopR*²

*drl*³

*Fas3*⁴

*for*⁵

*Nf1*⁶

*sra*⁷

Shown are pairwise F_{ST} values of the candidate SNPs identified in the different population comparisons; red: Florida-Maine, blue: Florida-Pennsylvania, green: Pennsylvania-Maine.

Notes:

[§] For reviews of learning and memory in *Drosophila* see, for example, Keene and Waddell (2007) and Busto *et al.* (2010). The candidate genes shown below are all involved in associative odor learning and memory and typically expressed in the mushroom bodies (corpora pedunculata); some of them are also involved in locomotory behavior, determination of adult lifespan, synaptic transmission, and axon guidance. It is interesting to note that Kolaczowski *et al.* (2011) find an enrichment of clinically varying candidate genes in the gene ontology (GO) category "mushroom body development".

¹ *dnc*, *dunce*; a famous gene involved in learning (Dudai *et al.* 1976); apart from learning deficiencies mutants also display sexual hyperactivity and reduced lifespan (Bellen *et al.* 1987). For further information see: <http://flybase.org/reports/FBgn0000479.html>

² *DopR* (= *dDA1*), *Dopamine receptor*; required in mushroom body neurons for aversive and appetitive learning (Kim *et al.* 2007). For further information see: <http://flybase.org/reports/FBgn0011582.html>

³ *drl* (= *lio*), *derailed*; also known as *linotte*; mutants deficient in olfactory avoidance response (Dura *et al.* 1993). For further information see: <http://flybase.org/reports/FBgn0015380.html>

⁴ *Fas3*, *Fasciclin 3*; learning and memory mutant reported by Dubnau *et al.* (2003; see their supplementary material). For further information see: <http://flybase.org/reports/FBgn0000636.html>

⁵ *for*, *foraging*; a gene that encodes a cGMP-dependent protein kinase; known to harbor a naturally occurring behavioral polymorphism, the so-called sitter-rover larval polymorphism that affects larval foraging behavior (e.g., Osborne et al. 1997); interestingly, this polymorphism also affects learning and memory (Mery et al. 2007). Moreover, the *foraging* locus is involved in the physiological response to food deprivation and has been shown to interact with several components of IIS, including *InR* and *PI3K* (*Dp110*) (see [15]) (Kent et al. 2009). Turner et al. (2008) also have identified this gene to vary clinically. See: <http://flybase.org/reports/FBgn0000721.html>

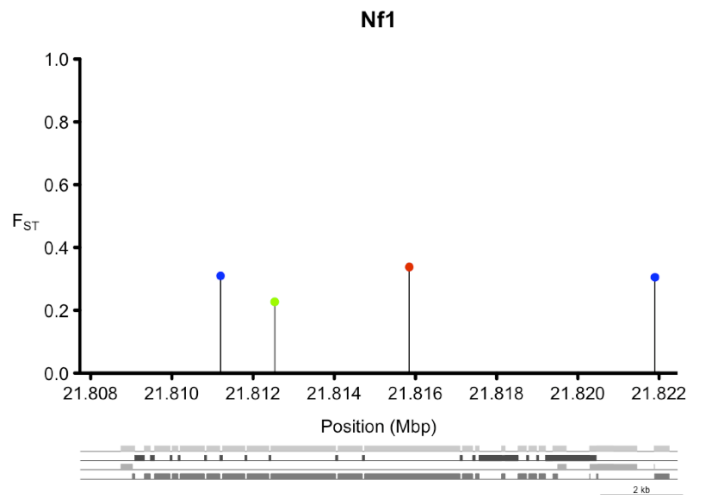
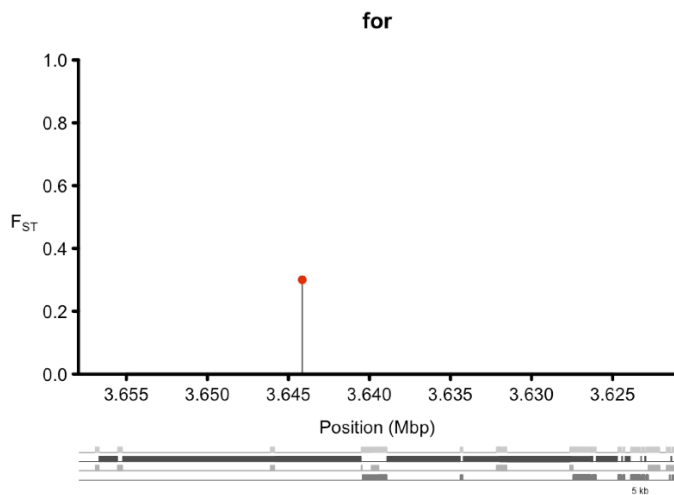
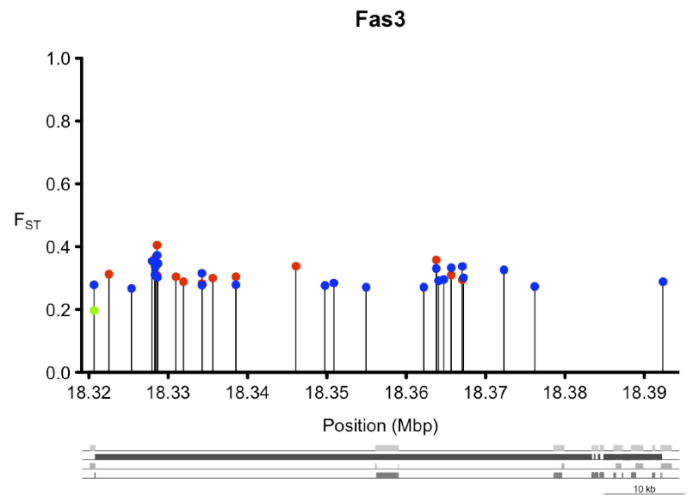
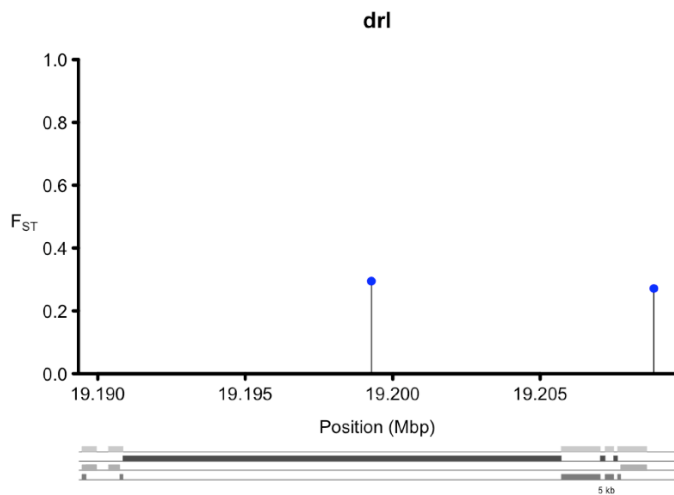
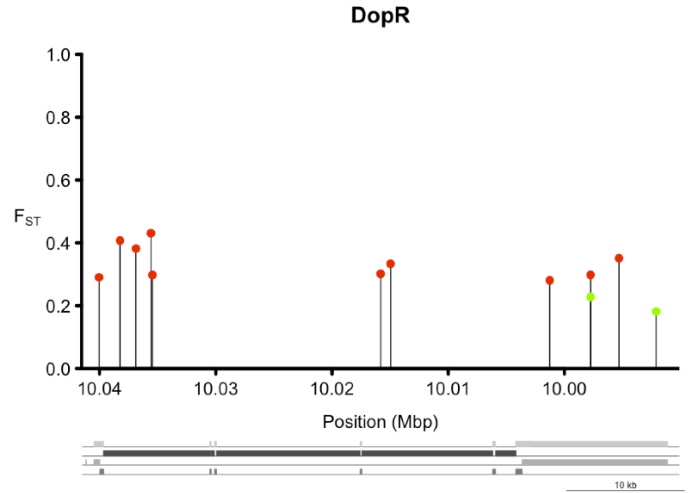
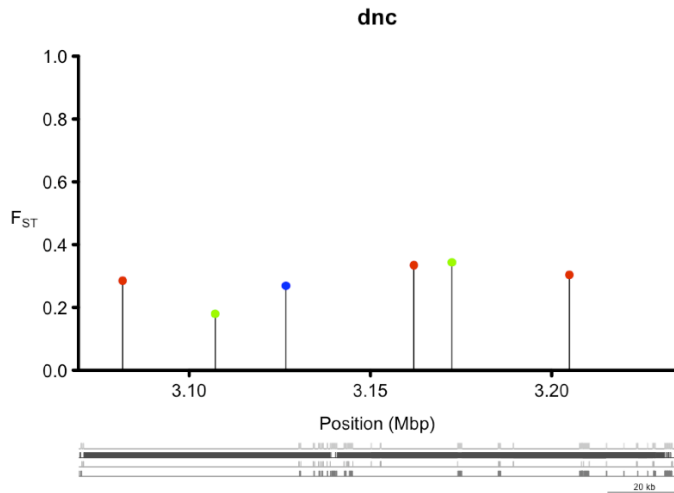
⁶ *Nf1*, *Neurofibromin 1*; involved in learning (see Guo et al. 2000). For further information see: <http://flybase.org/reports/FBgn0015269.html>

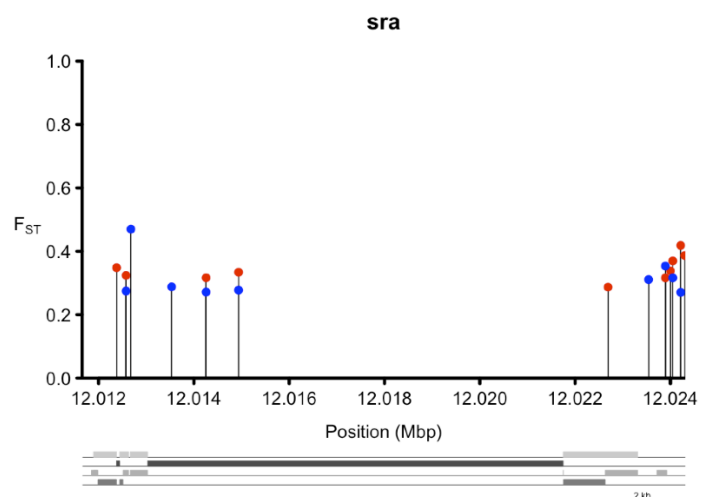
⁷ *sra* (= *nla*), *sarah*; involved in *Drosophila* learning, with the human homolog being involved in Down syndrome (see Chang et al. 2003). For further information see: <http://flybase.org/reports/FBgn0086370.html>

References:

- Bellen HJ, Kiger JA (1987) Sexual hyperactivity and reduced longevity of dunce females of *Drosophila melanogaster*. *Genetics* **115**, 153-160.
- Busto GU, Cervantes-Sandoval I, Davis RL (2010) Olfactory Learning in *Drosophila*. *Physiology* **25**, 338-346.
- Chang KT, Shi Y-J, Min K-T (2003) The *Drosophila* homolog of Down's syndrome critical region 1 gene regulates learning: Implications for mental retardation. *Proceedings of the National Academy of Sciences* **100**, 15794-15799.
- Dubnau J, Chiang A-S, Grady L, et al. (2003) The staufen/pumilio Pathway Is Involved in *Drosophila* Long-Term Memory. *Current Biology* **13**, 286-296.
- Dudai Y, Jan YN, Byers D, Quinn WG, Benzer S (1976) dunce, a mutant of *Drosophila* deficient in learning. *Proceedings of the National Academy of Sciences* **73**, 1684.
- Dura JM, Preat T, Tully T (1993) Identification of linotte, a new gene affecting learning and memory in *Drosophila melanogaster*. *Journal of neurogenetics* **9**, 1-14.
- Guo H-F, Tong J, Hannan F, Luo L, Zhong Y (2000) A neurofibromatosis-1-regulated pathway is required for learning in *Drosophila*. *Nature* **403**, 895-898.
- Keene AC, Waddell S (2007) *Drosophila* olfactory memory: single genes to complex neural circuits. *Nature Reviews Neuroscience* **8**, 341-354.
- Kent CF, Daskalchuk T, Cook L, Sokolowski MB, Greenspan RJ (2009) The *Drosophila* foraging gene mediates adult plasticity and gene-environment interactions in behaviour, metabolites, and gene expression in response to food deprivation. *PLoS Genetics* **5**, e1000609.
- Kim Y-C, Lee H-G, Han K-A (2007) D1 Dopamine Receptor dDA1 Is Required in the Mushroom Body Neurons for Aversive and Appetitive Learning in *Drosophila*. *The Journal of Neuroscience* **27**, 7640-7647.

- Mery F, Belay AT, So AK-C, Sokolowski MB, Kawecki TJ (2007) Natural polymorphism affecting learning and memory in *Drosophila*. *Proc. Natl. Acad. Sci. USA* **104**, 13051-13055.
- Osborne KA, Robichon A, Burgess E, et al. (1997) Natural Behavior Polymorphism Due to a cGMP-Dependent Protein Kinase of *Drosophila*. *Science* **277**, 834-836.





Appendix S12

Examples of some transcription factor candidate genes

14-3-3 epsilon^{*1}

*abd-A*²

*Abd-B*³

*bab1*⁴

E(Pc)^{*5}

*fru*⁶

Ino80^{*7}

Sfmbt^{*8}

*Ubx*⁹

Shown are pairwise F_{ST} values of the candidate SNPs identified in the different population comparisons; red: Florida-Maine, blue: Florida-Pennsylvania, green: Pennsylvania-Maine.

Notes:

* Also found by Kolaczowski *et al.* (2011)

¹ *14-3-3 epsilon*; involved in IIS by interacting with *Foxo* (see [1] S1); found to be clinal by Kolaczowski *et al.* (2011); for further information see: <http://flybase.org/reports/FBgn0020238.html>

² *abd-A*, *Abdominal A*; a major Hox gene. For further details see: <http://flybase.org/reports/FBgn0000014.html>

³ *Abd-B*, *Abdominal B*; a major Hox gene. For further details see: <http://flybase.org/reports/FBgn0000015.html>

⁴ *bab1*, *bric a brac 1*; important in multiple developmental processes, including gonad development. See: <http://flybase.org/reports/FBgn0004870.html>

⁵ *E(Pc)*, *Enhancer of Polycomb*; found to be clinal by Kolaczowski *et al.* (2011). See: <http://flybase.org/reports/FBgn0000581.html>

⁶ *fru*, *fruitless*; important gene in the regulation of sex-specific (male) courtship behavior. For details see: <http://flybase.org/reports/FBgn0004652.html>

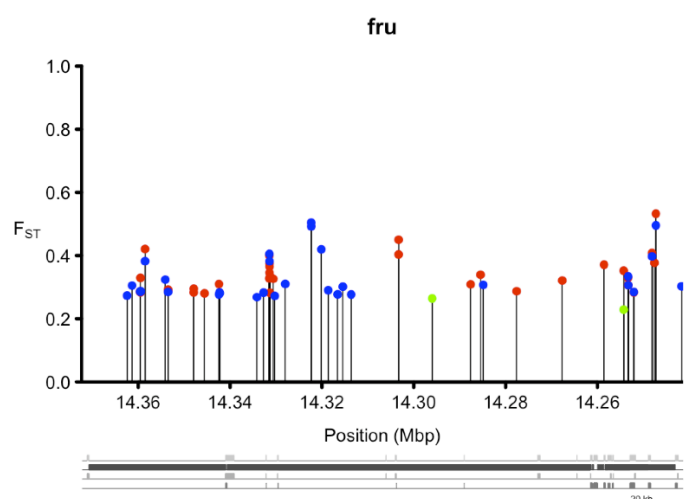
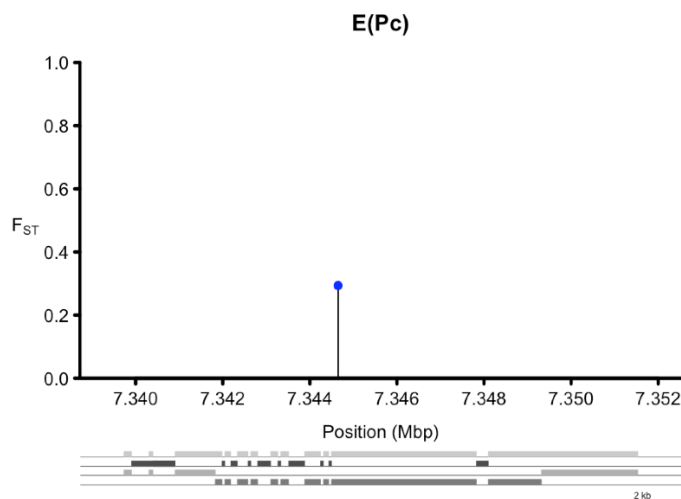
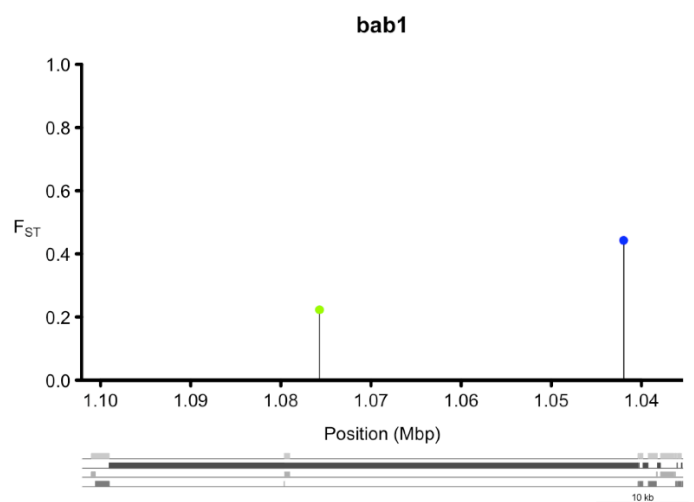
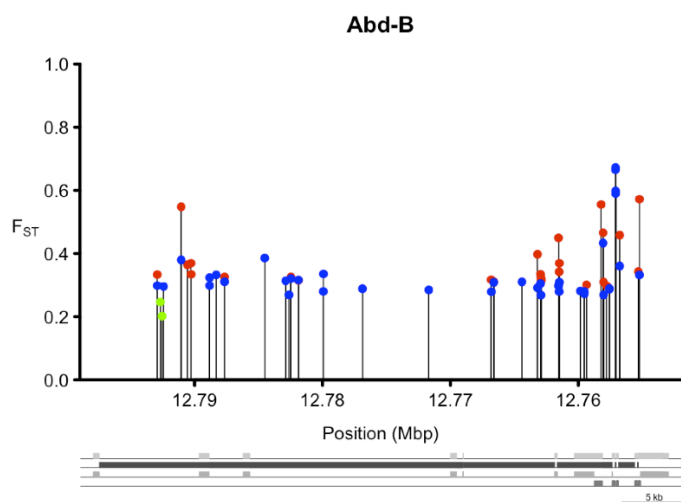
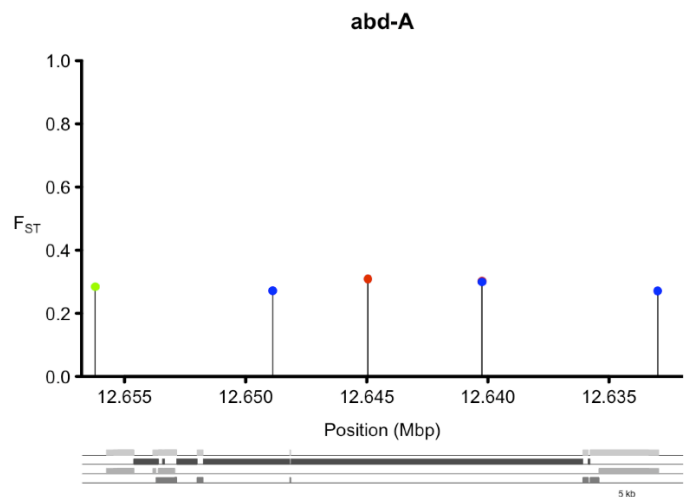
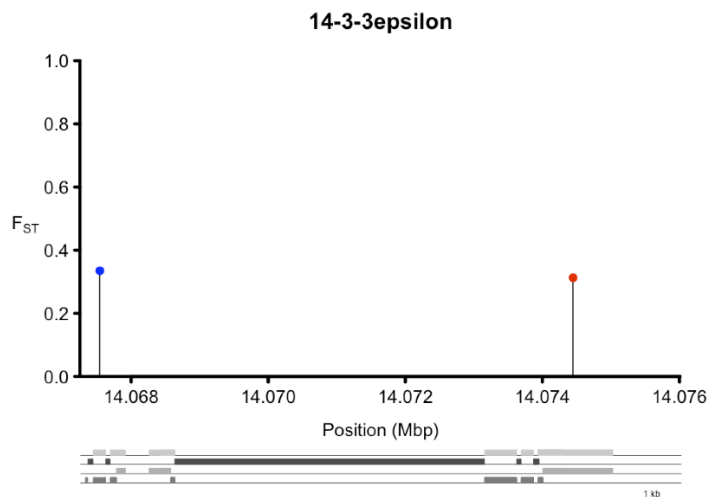
⁷ *Ino80*; found to be clinal by Kolaczowski *et al.* (2011). For details see: <http://flybase.org/reports/FBgn0086613.html>

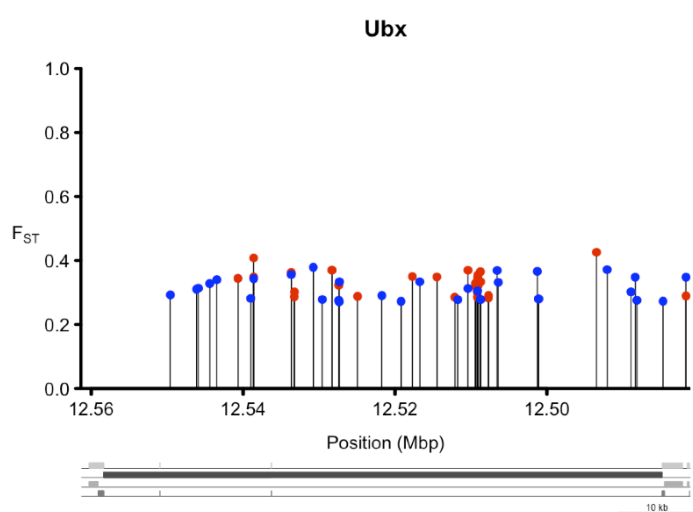
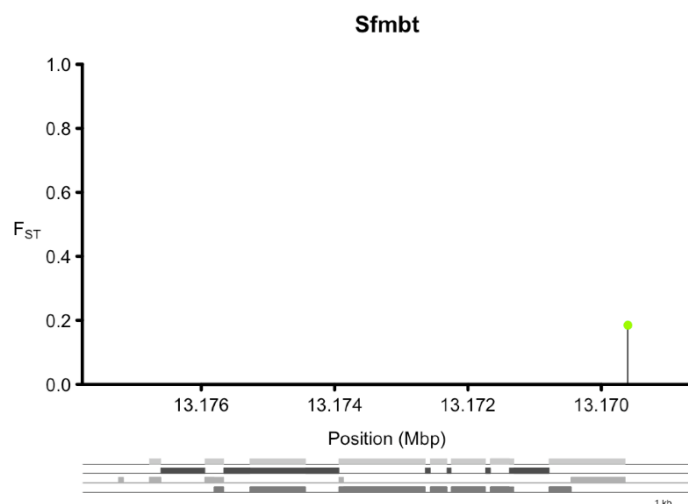
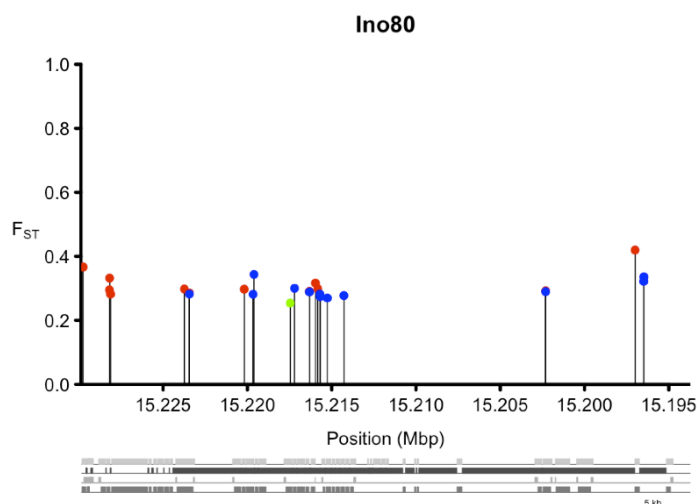
⁸ *Sfmbt*, *Scm-related gene containing four mbt domains*; a chromatin-binding protein involved in gene regulation; a polycomb group repressor (Grimm et al. 2009); found to vary clinally by Kolaczowski et al. (2011). For detailed information see: <http://flybase.org/reports/FBgn0032475.html>

⁹ *Ubx*, *Ultrabithorax*; a major Hox gene. For further details see: <http://flybase.org/reports/FBgn0003944.html>

References:

- Grimm C, Matos R, Ly-Hartig N, et al. (2009) Molecular recognition of histone lysine methylation by the Polycomb group repressor dSfmbt. *EMBO Journal* **28**, 1965-1977.
- Kolaczowski B, Kern AD, Holloway AK, Begun DJ (2011) Genomic Differentiation Between Temperate and Tropical Australian Populations of *Drosophila melanogaster*. *Genetics* **187**, 245-260.





Please see the separate folder with individual files:

Appendix S13 (folder with word files and Python scripts) Folder containing a description of our bioinformatic analysis pipeline, including Python scripts.

Please see the separate folder with individual files:

Appendix S14 (folder with individual pdf files) Folder containing clinal candidate gene list and plots for each clinal (“plus_plus”) candidate gene, showing the changes in allele frequency for the candidate gene as a function of latitude.