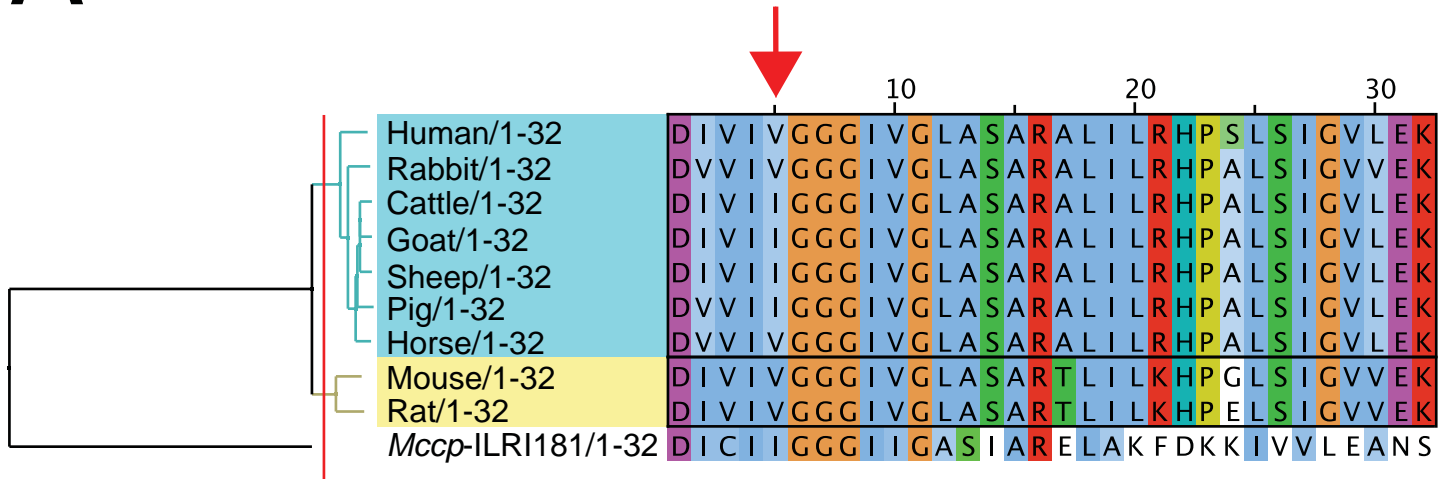


A

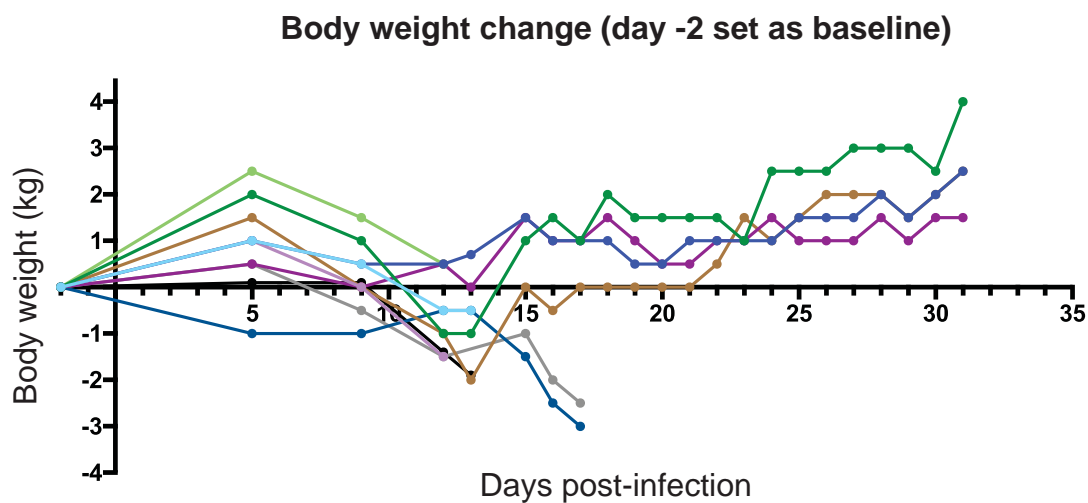
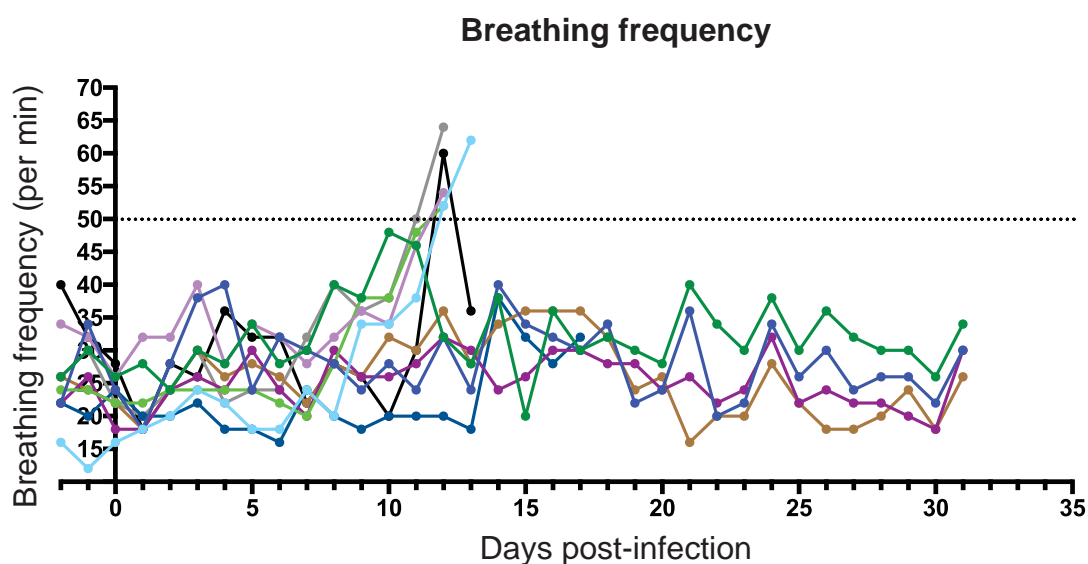
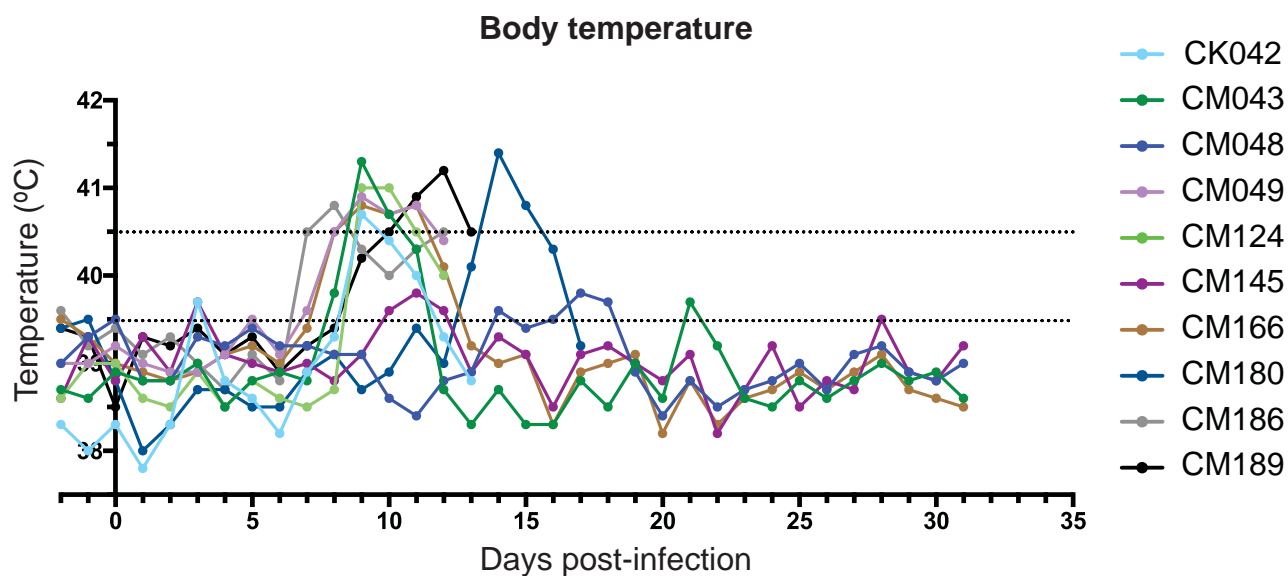


B

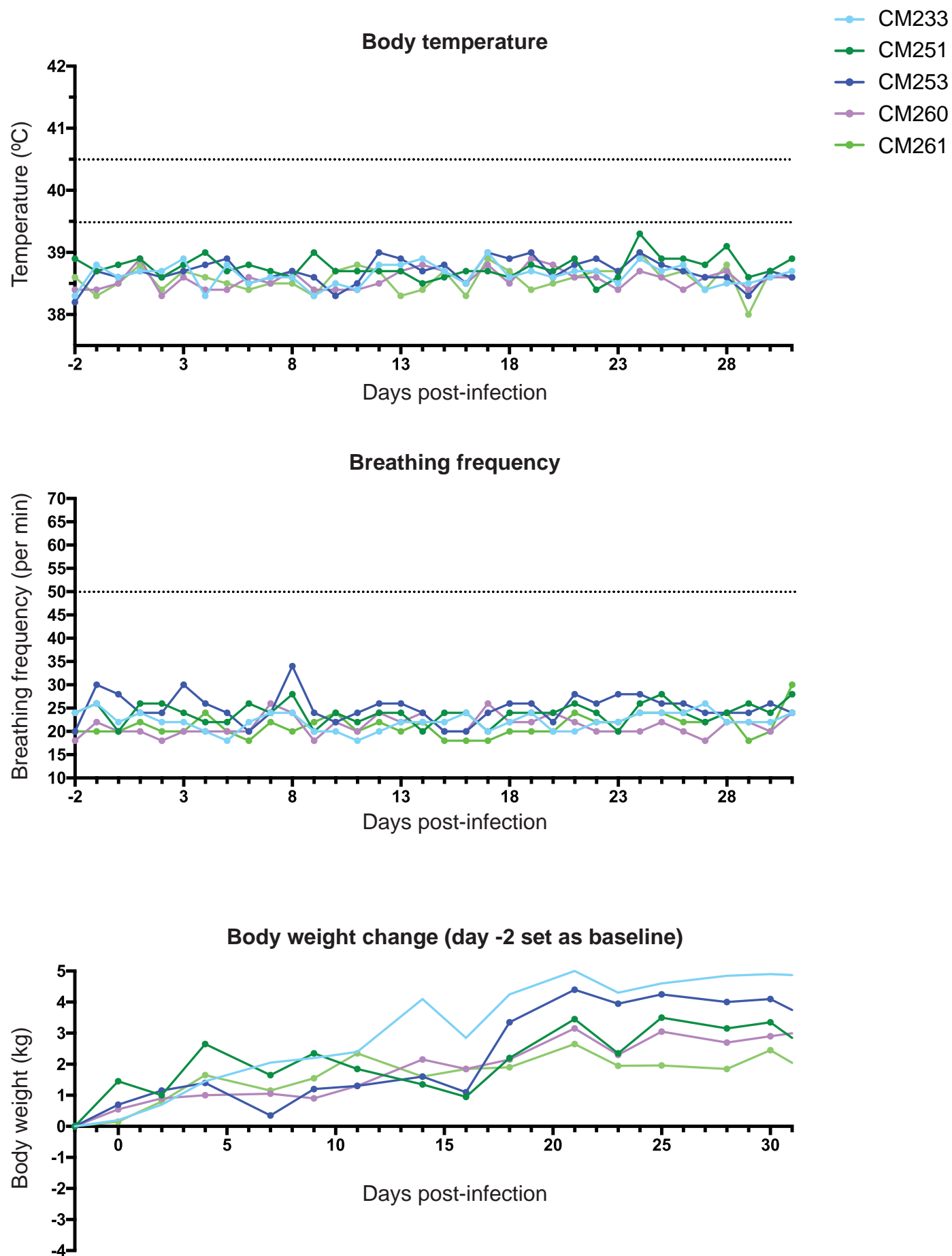




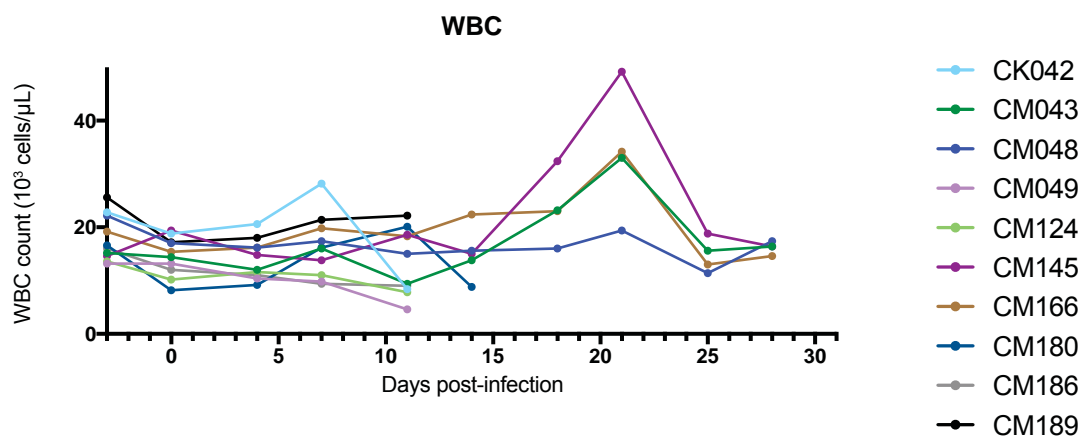
A



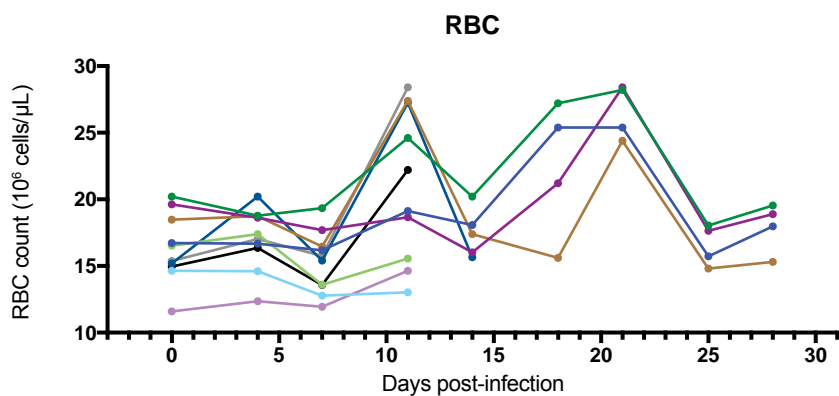
B



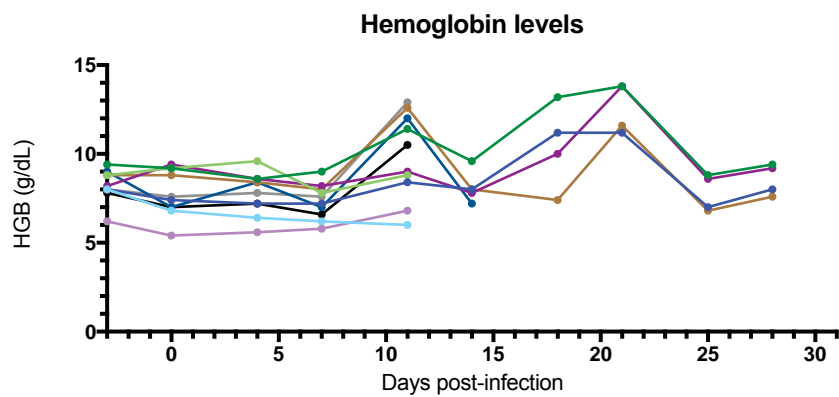
A



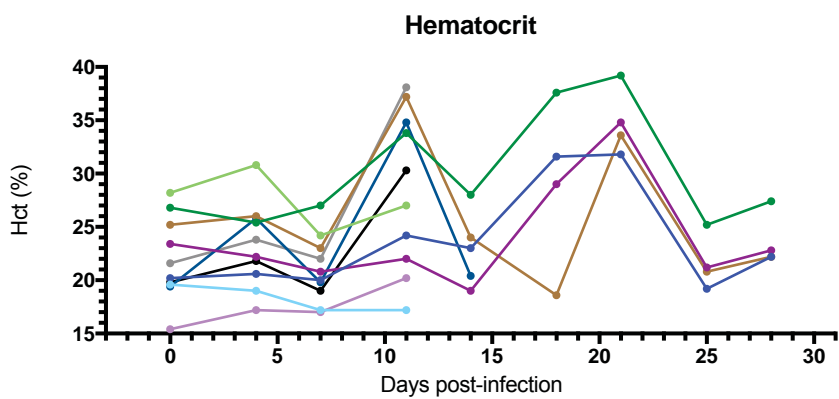
B

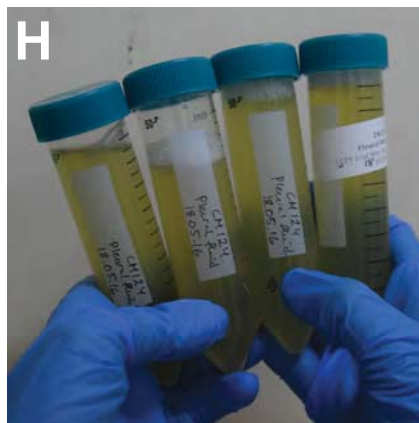
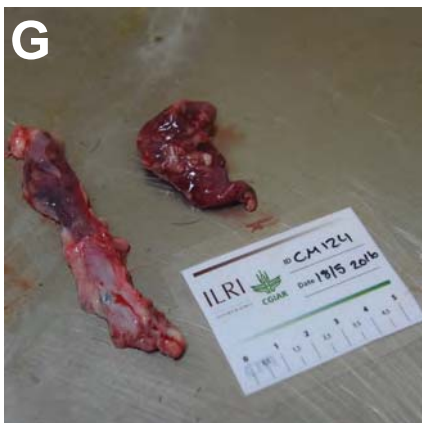
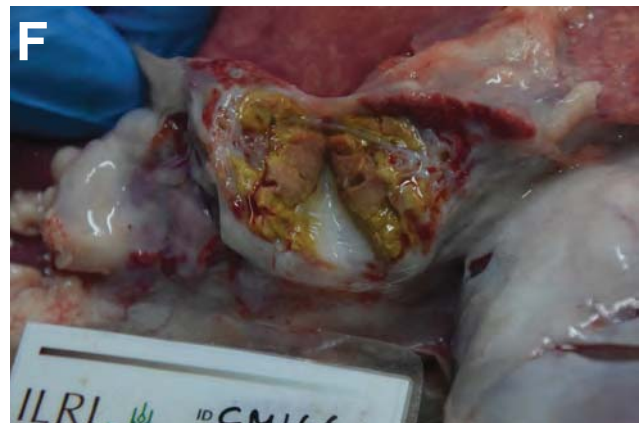


C



D

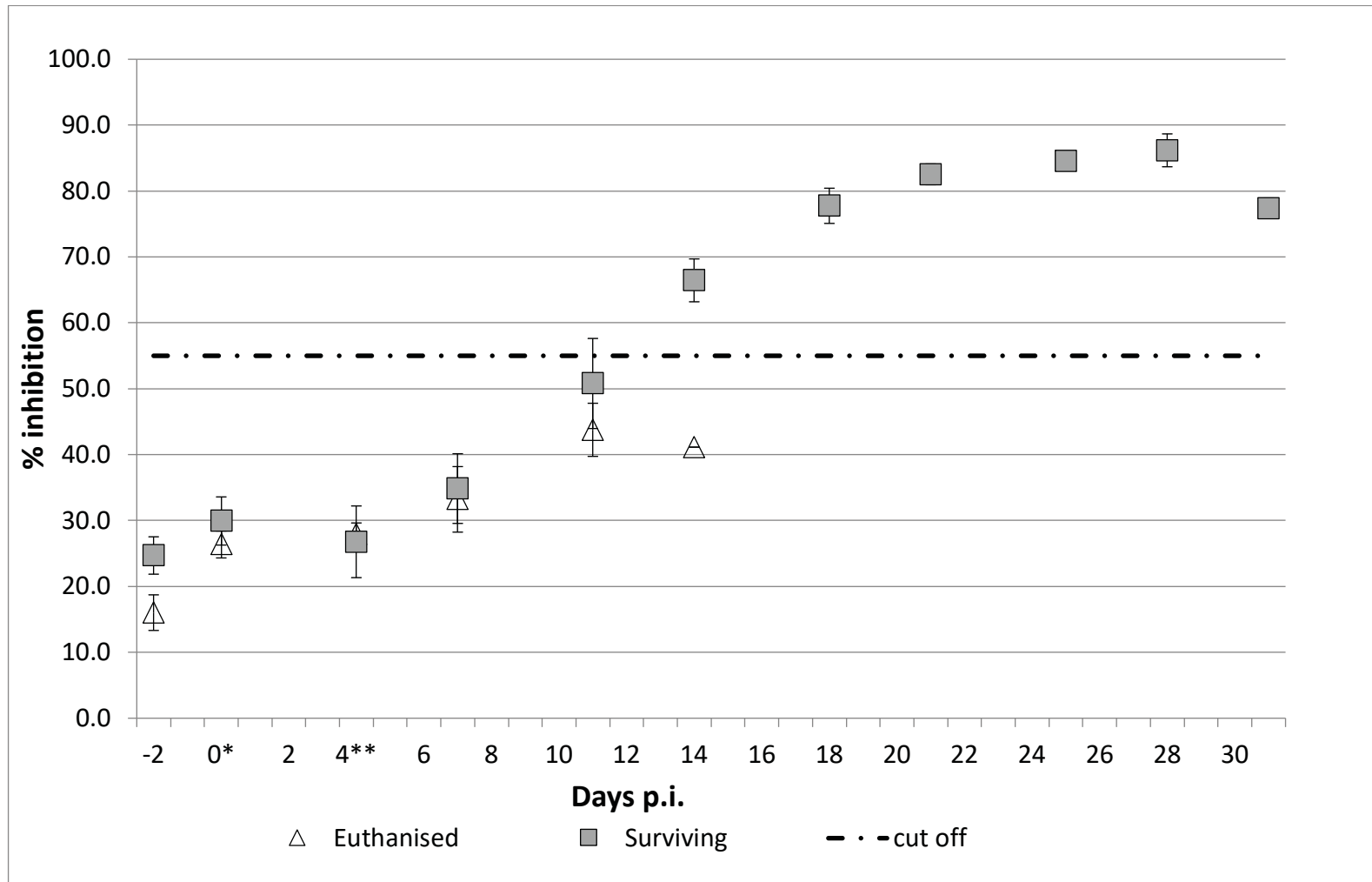




A

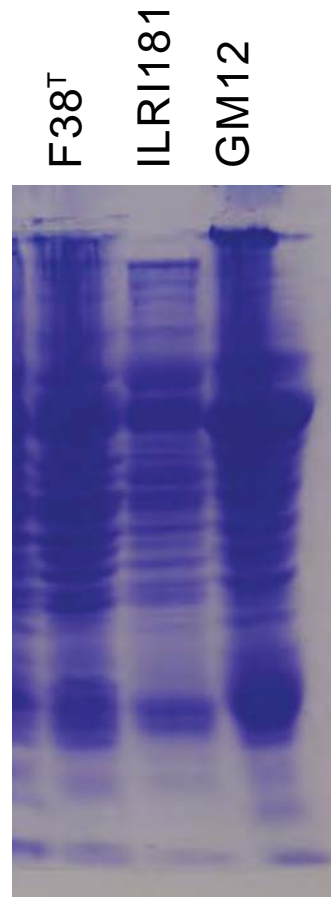
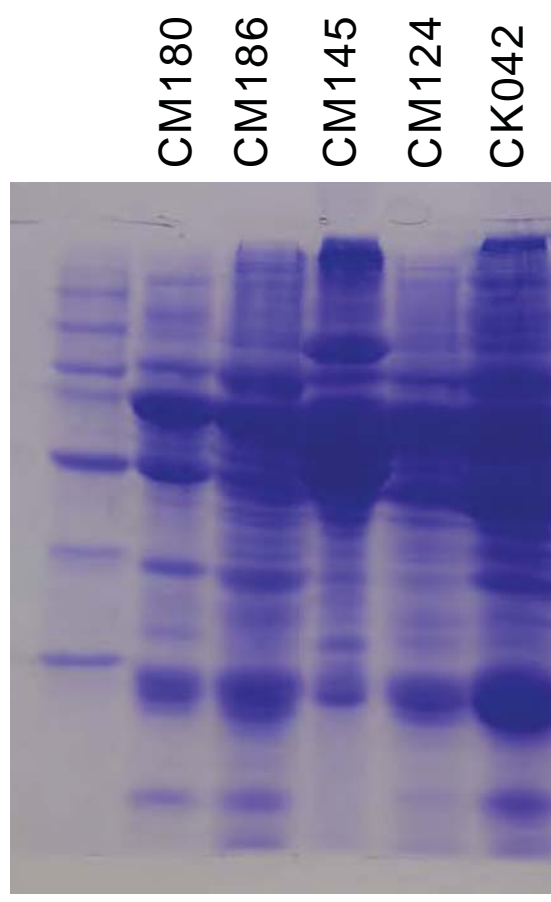
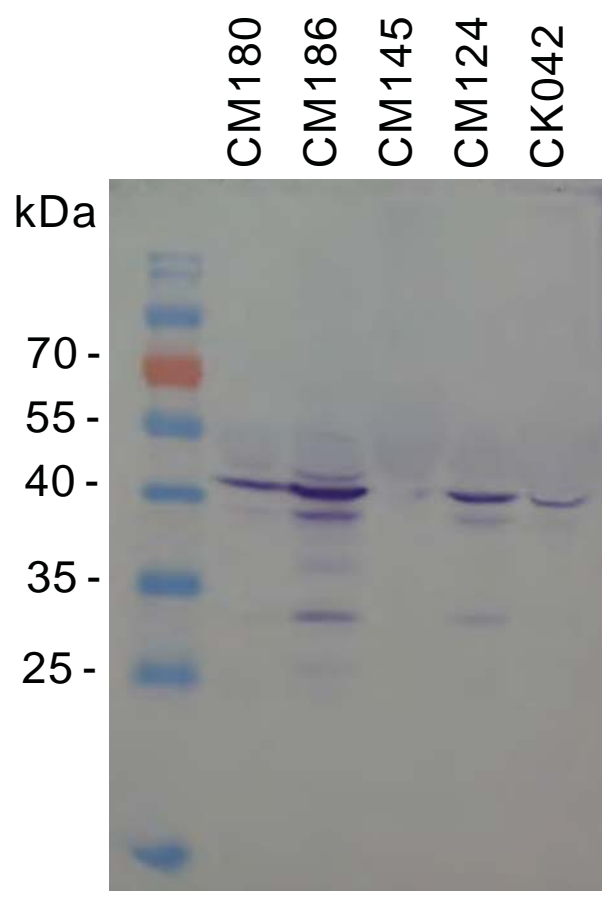
	Animal ID									
Days post infection	CK042	CM043	CM048	CM049	CM124	CM145	CM166	CM180	CM186	CM189
-2	23	20	32	12	18	26	21	5	16	22
0	28	29	30	19	27	39	22	21	30	32
4	32	36	23	23	25	35	13	25	29	33
7	36	49	27	17	26	37	26	54	32	34
11	32	71	41	52	32	47	44	52	53	42
14		75	63			60	68	41		
18		77	79			84	71			
21		84	83			85	78			
25		87	83			84	84			
28		89	88			88	79			
31		80	79			77	73			

B



C

	Animal ID				
Days post infection	CM233	CM251	CM253	CM260	CM261
-3	37	50	37	33	44
1	31	47	36	30	50
4	42	48	27	27	47
8	34	51	30	36	38
11	30	42	36	33	51
15	42	47	44	33	49
18	38	43	37	36	54
22	18	25	27	23	32
25	29	25	31	25	28
29	26	26	28	29	44
32	18	38	27	20	30
35	40	34	35	33	42



Animal ID	pH of urine
CK042 [†]	6.4
CM043	8.4
CM048	8.5
CM049 [†]	6
CM124 [†]	6.7
CM145	8.5
CM166	8.9
CM180 [†]	6.4
CM186 [†]	6.4
CM189 [†]	6.7
CM233*	ND
CM251*	ND
CM253*	8.5
CM260*	8.2
CM261*	8.5

[†]Euthanized before 31 dpi; *mock-infected animal; ND-not determined