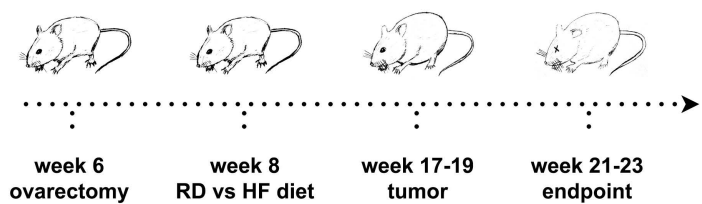
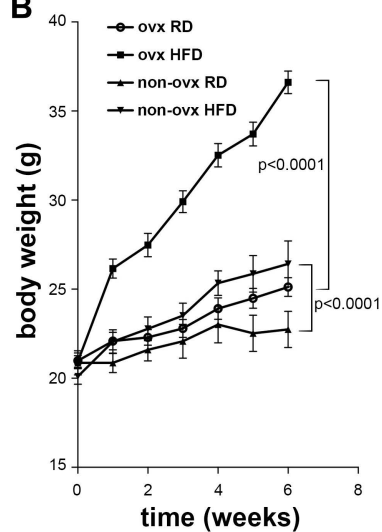
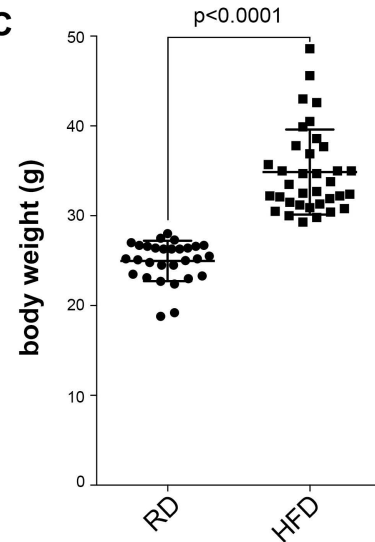
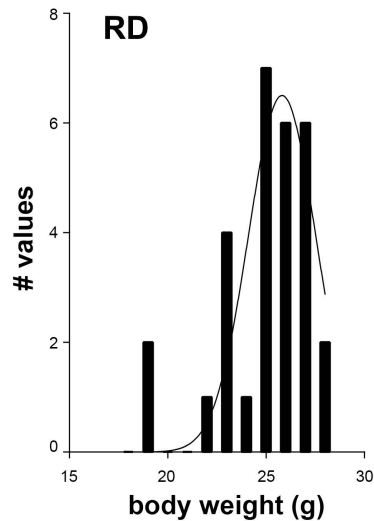
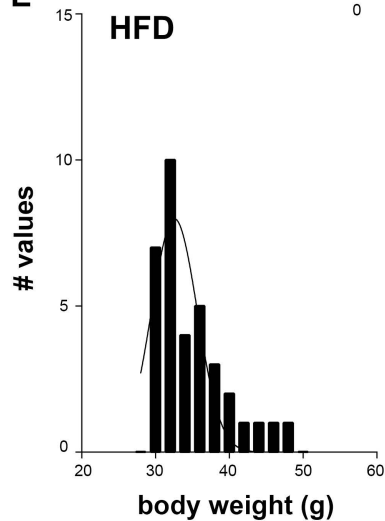
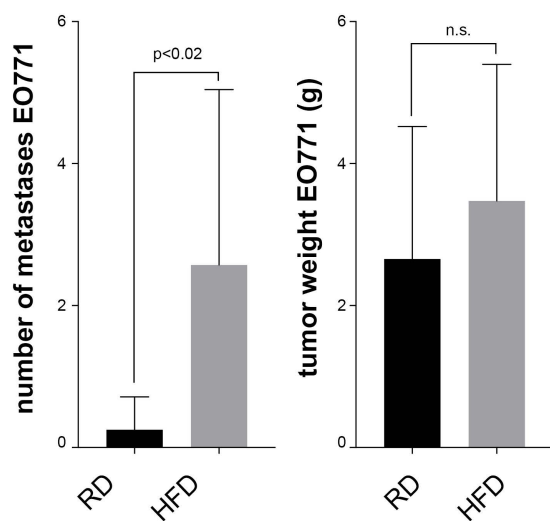
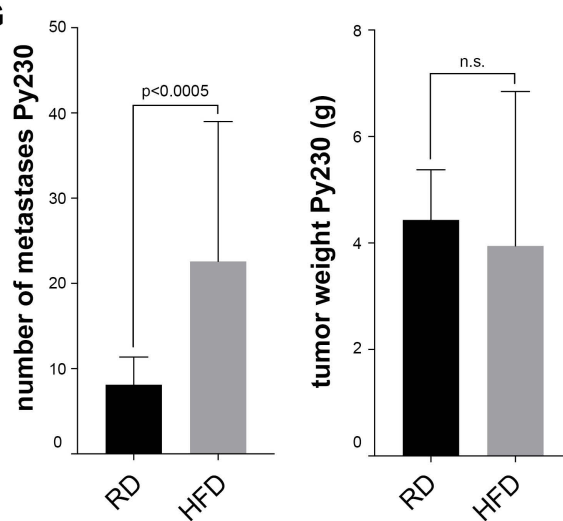


Additional file 1: Table S1:

ID	Forward 5'-3'	Reverse 5'-3'
Esr1	TCCGGCACATGAGTAACAAA	CCAGGAGCAGGTCATAGAGG
ErbB2	GAAGCCAGAGCATCTCCAAG	TCTGGCCATGCTGAAATGTA
Krt18	CGAGGCACTCAAGGAAGAAC	AATCTGGGCTTCCAGACCTT
Gata3	GCTACGGTGCAGAGGTATCC	AGAGATCCGTGCAGCAGAG
Slc1a2	TTCTCTGTCGGCCTCTTTGT	GAGAAGCCCATAAGCACAGC
Hk2	GGCAGAGATGTGGTGGATCT	TCATTCAACCACAGCCACAAT
c-Myc	CCTAGTGCTGCATGAGGAGAC	GATGGAGATGAGCCCGACT
Ccl2	CCCAATGAGTAGGCTGGAGA	TCTGGACCCATTCTTCTTG
Il6	ATGGATGCTACCAAAGTGGAT	TGAAGGACTCTGGCTTTGTCT
Arbp	GATTCGGGATATGCTGTTGG	GTTCTGAGCTGGCACAGTGA
Cldn1	GATGTGGATGGCTGTCATTG	CCTGGCCAAATTCATACCTG
Cldn7	AGCATGTTCTGGATTGGTC	CCAGAAGGACCAGAGCAGAC
Cldn10	AAAGTCGGAGGCTCAGATCA	ACAGCCTGTCATGGAACACA
Cldn14	AAGACTGTTGAAGCCGCAGT	CGCAGGAAGCCTCATACATC
F11r	TATGATCCTGGGCTCTTTGG	GGGAGAGGAGAAGCCAGAGT
Lama3	GGGTGTGACCAAAAAGTGCT	GAGGGCACATCCAAGTTTGT
Arhgef6	AGGCTGCCTACTGAACCTCA	TGCACCTTGATTTTCCATGA
Col17a1	CTGGATTAGGCAAGGCTGAG	CTTGACTCCCCATGTCACCT
Lamc2	AGTTCTGCCCCAAGATCAGA	CACGCGGTAGTCAAAGACA
Pard6g	TGACGACAACCTTCTGCAAGG	AGCACCTTTTTCTTCCGTGA
Adm	CAGAGCATCGCCACAGAATG	ACGACTTAGCGCCCACTTAT
Egln1	TTGCTGACATTGAACCCAAA	CTCGCTCATCTGCATCAAAA
FoxM1	CCAAGGCAAAGACAGGAGAG	CCAAGCCACTGGATATTGGT

A**B****C****D****E****F****G**

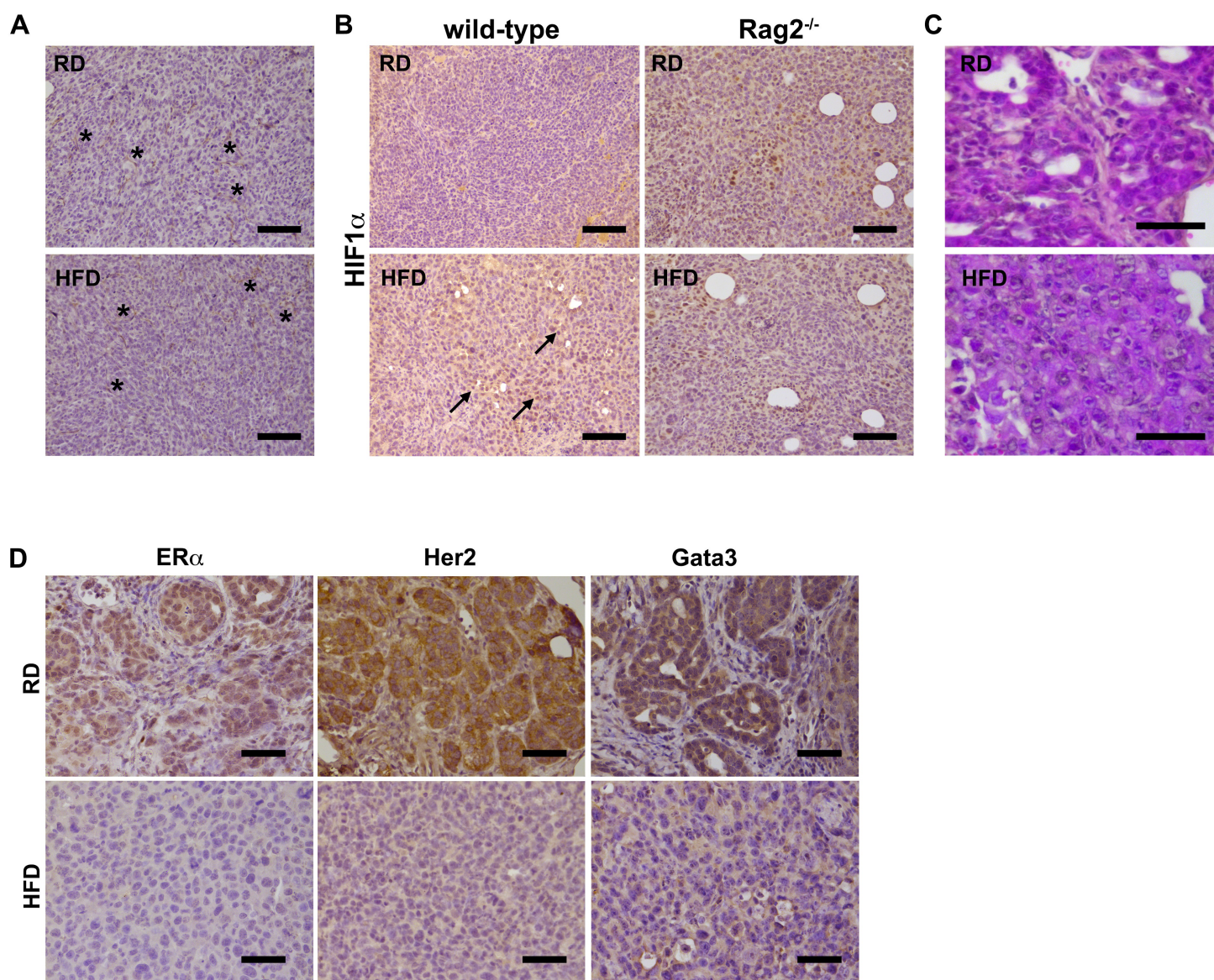


Figure S2

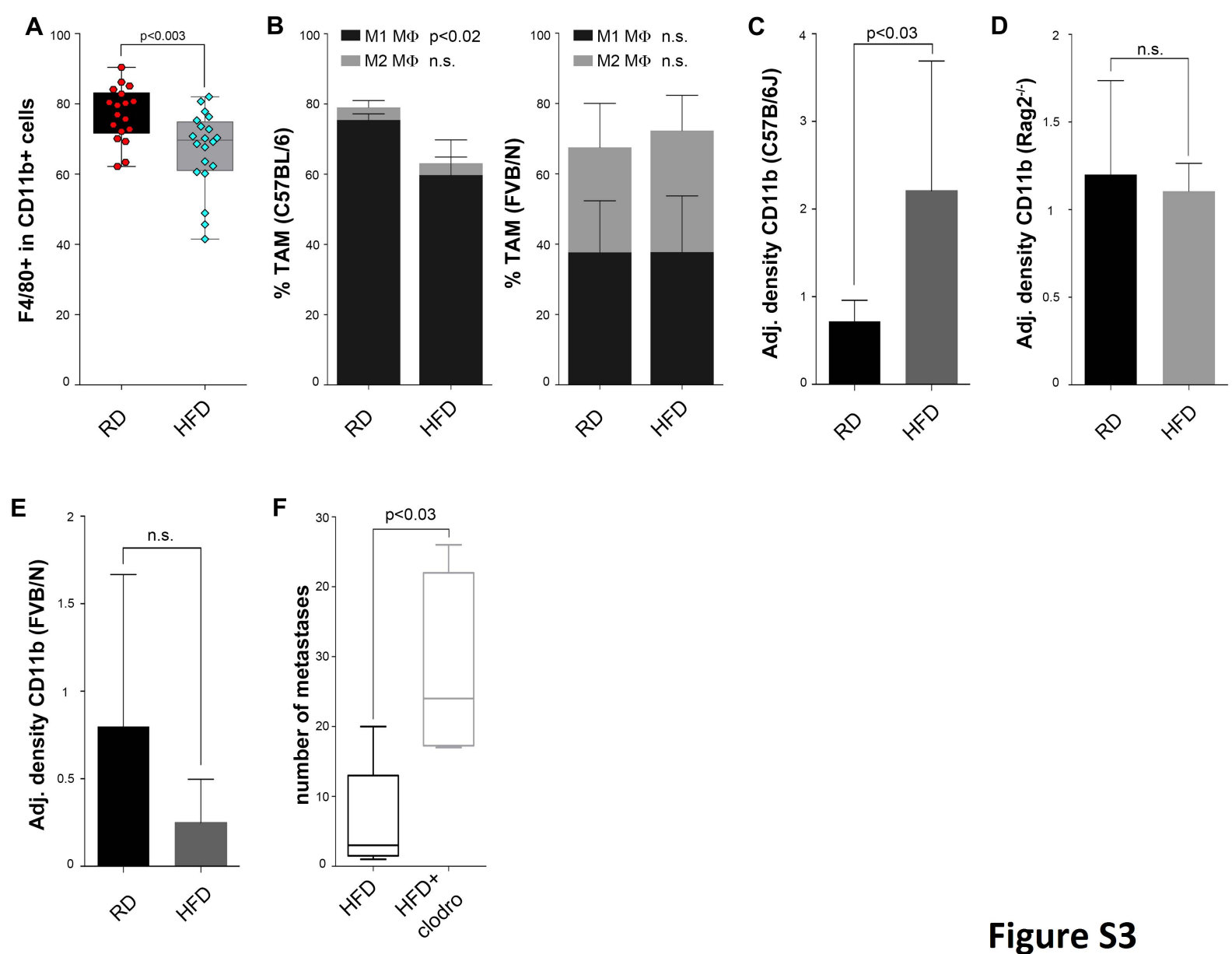
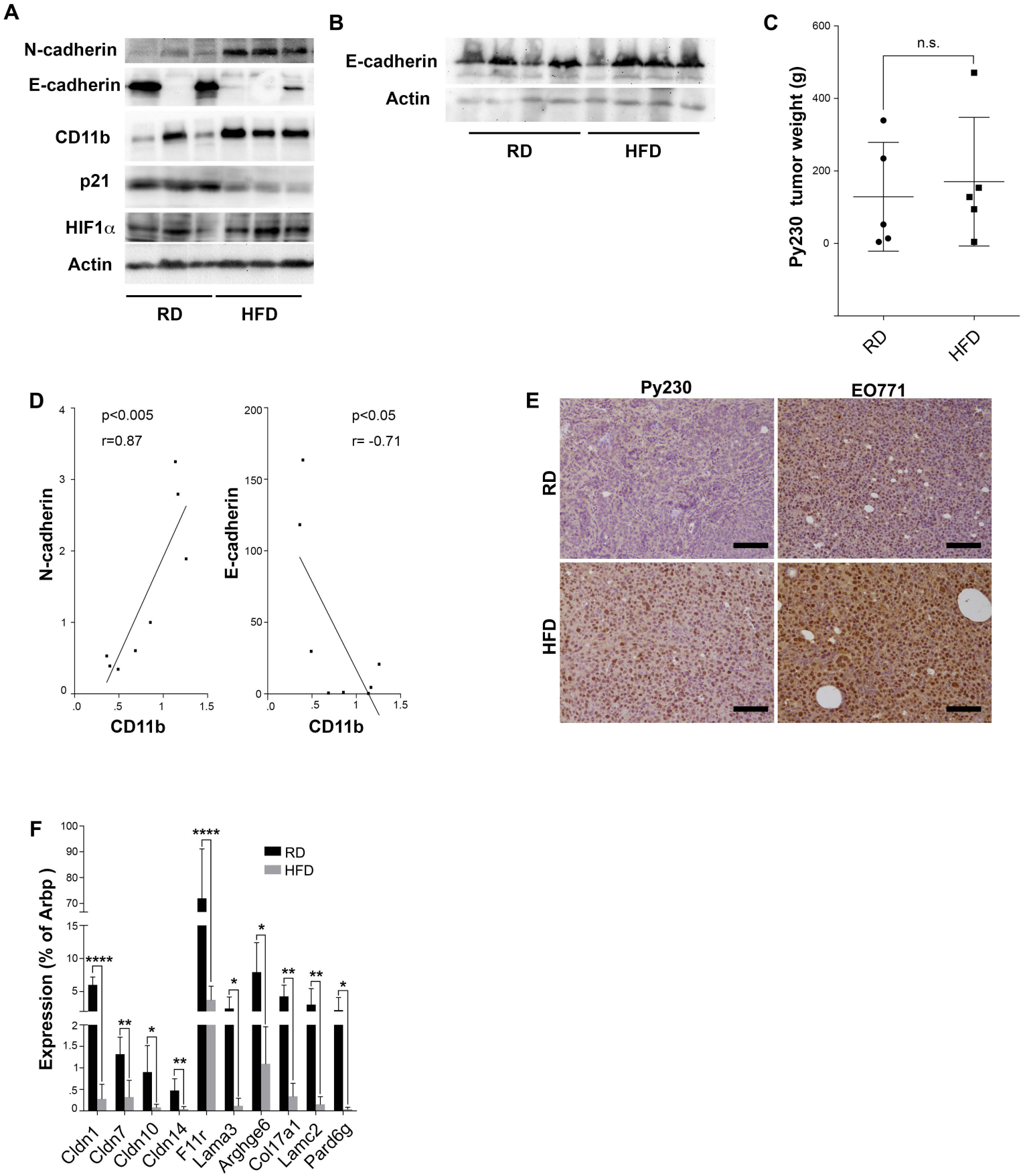


Figure S3



Suppl. Figure 4