

Table 2: Foraminiferal distribution in studied samples

[illegible]

Supplementary material 2 (EPS 20514 kb) Online Resource 2: Microphotography of planktonic foraminiferal assemblages. 1a-c *Turborotalia pomeroli* (Toumarkine & Bolli 1970), Sample LM0135. 2a-c *Turborotalia frontosa* (Subbotina 1953), Sample NPK317. 3a-b *Subbotina bassriverensis* (Olsson and Hemleben 2006), Sample GF252. 4a-b *Acarinina punctocarinata* (Fleisher 1974), Sample GF347. 5a-b *Acarinina bulbrooki* (Postuma 1971), Sample LM0135

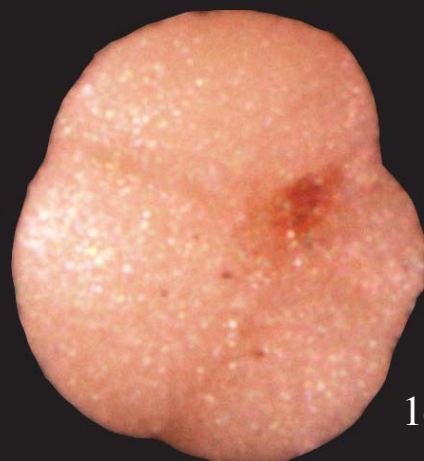


1a

100 μ m



1b



1c



2a

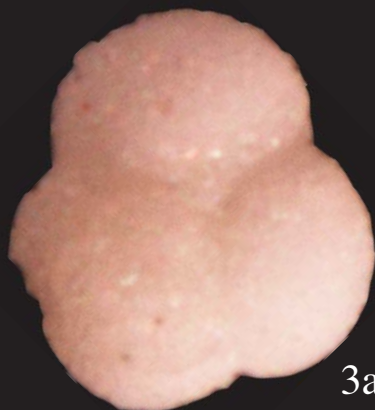


2b

100 μ m



2c



3a

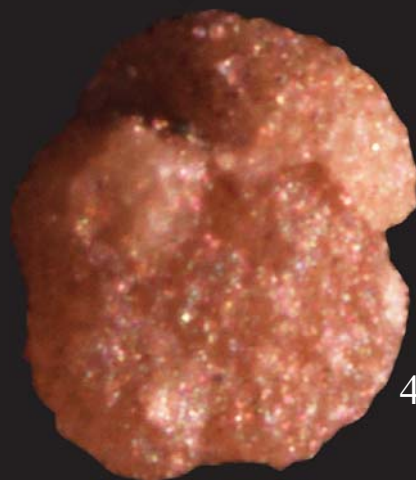


3b

100 μ m



5a

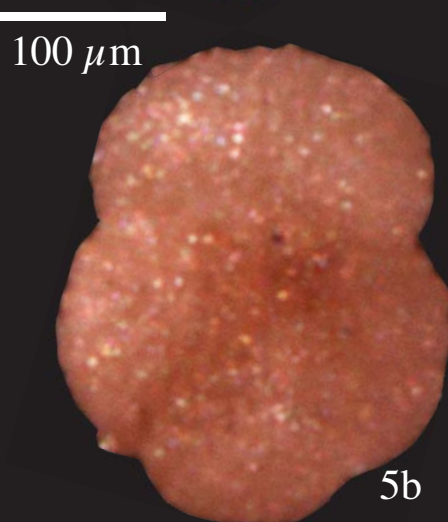


4a



4b

100 μ m



5b

100 μ m

Supplementary material 3 (EPS 30369 kb) Online Resource 3: Microphotography of planktonic foraminiferal assemblages. 1a-c *Globigerinatheka* index (Finlay 1939), Sample LM0135. 2a-c *Acarinina rohri* (Bronnimann & Bermudez 1953), Sample LM219. 3a-c *Acarinina topilensis* (Cushman 1925), Sample LM219. 4a-c *Paragloborotalia nana* (Bolli 1957), Sample LM0135. 5a-c *Praemurica lozanoi* (Colon 1954), Sample LM0135. 6a-c *Subbotina angiporoides* (Hornibrook 1965), Sample LM0135. 7a-b *Subbotina linaperta* (Finlay 1939), Sample GF347

