

Supporting Information

Laterally Stretched Polycyclic Aromatic Hydrocarbons: Synthesis of Dibenzophenanthroheptaphene and Tetrabenzotriphenyleno-pyranthrene Derivatives.

Bassam Alameddine,^{*,†} Rajamohanan Sobhana Anju,[†] Suchetha Shetty,[†] Noorullah Baig,[†] Fakhreia Al-Sagheer,[‡] Saleh Al-Mousawi,[‡] Titus Andreas Jenny[§]

[†]Department of Mathematics and Natural Sciences, Gulf University for Science and Technology, Kuwait.

[‡]Department of Chemistry, University of Kuwait, Kuwait.

[§]Department of Chemistry, University of Fribourg, Switzerland.

CONTENTS

- I. Experimental details (HR-MS of 1a-c, 2a-b, 4a-c, 9 and 10a,b and ¹H-NMR of 1c, 2b, 4a-c, 9, 10a-b, 13a,b).**
- II. UV-Emission spectra of 9.**
- III. II. Computational Details (3D optimized structures and their HOMO-LUMO configurations).**

I. Experimental details MALDI 1a-c, 2a-b, 4a-c, 9 and 10a,b.

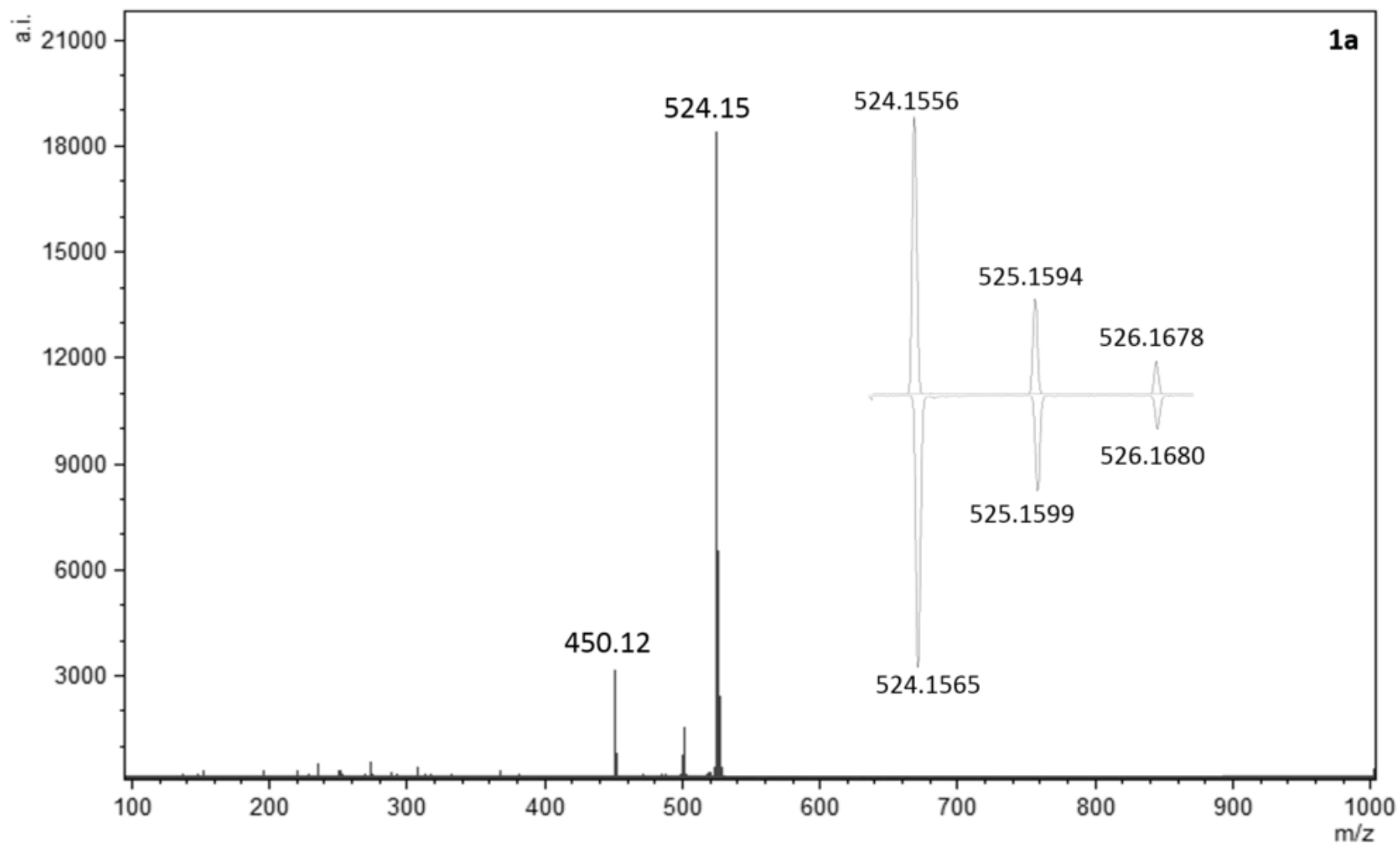


Figure S1. HR-MALDI spectrum of **1a**

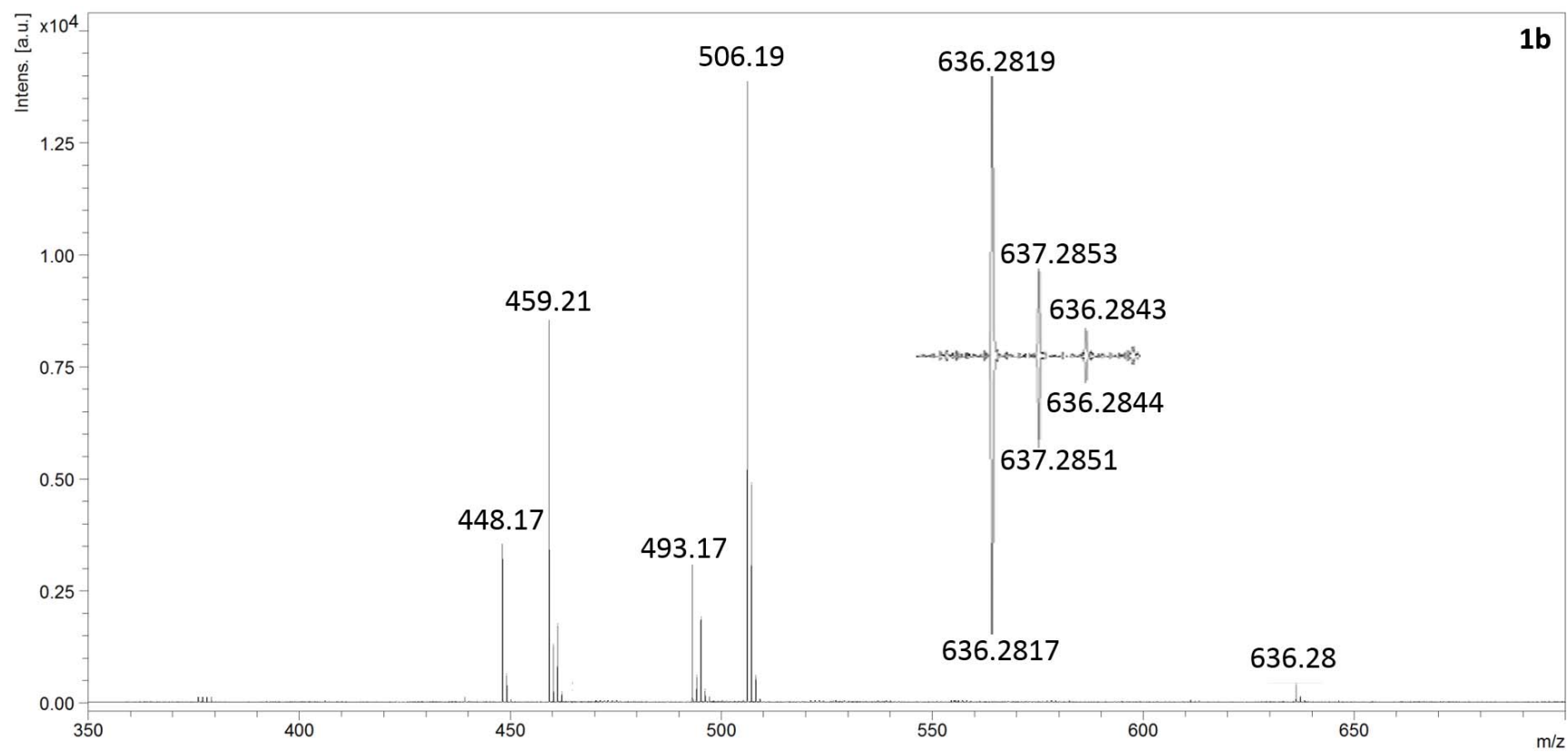


Figure S2. HR-MALDI spectrum of **1b**

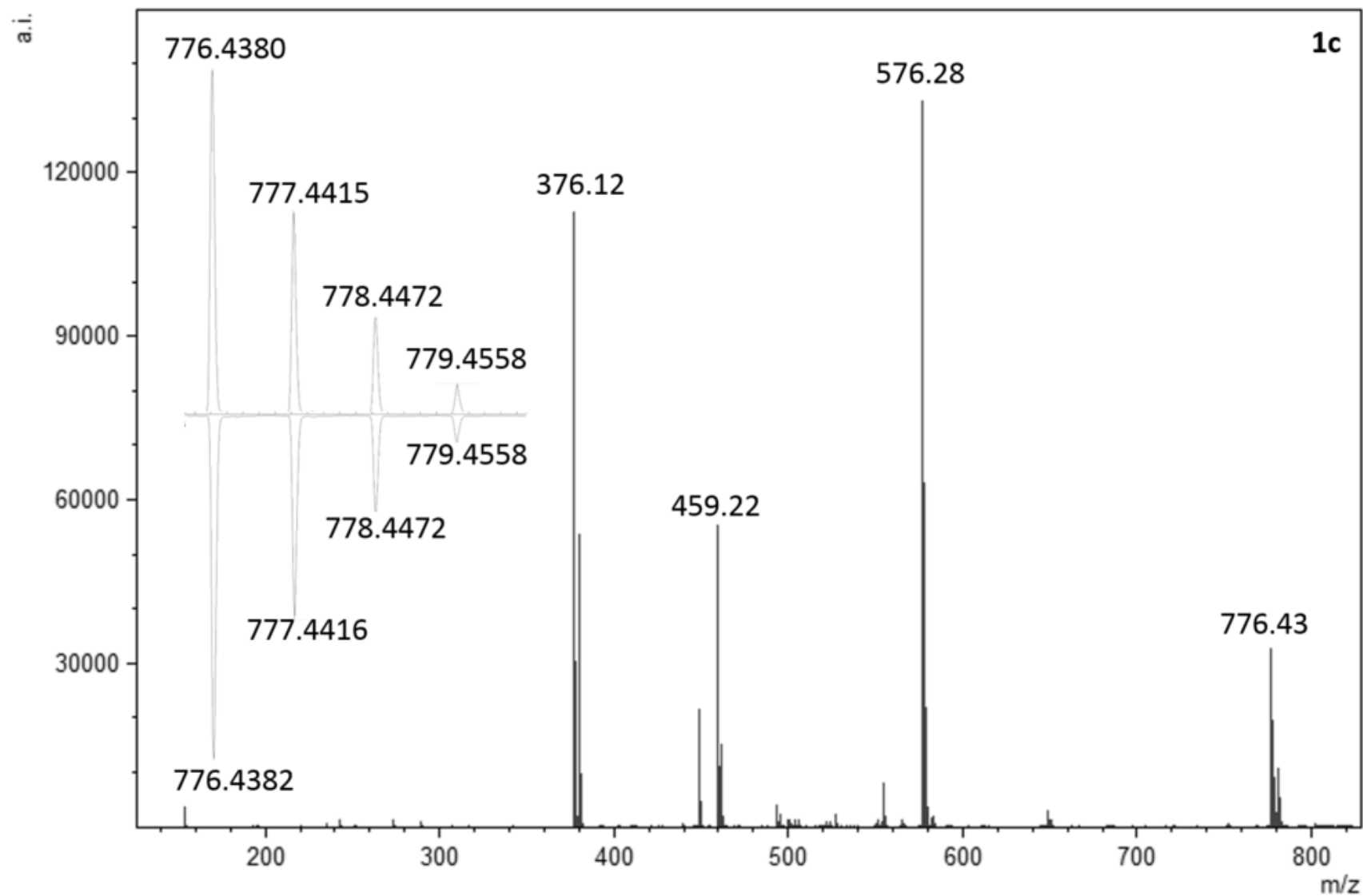


Figure S3. HR-MALDI spectrum of **1c**

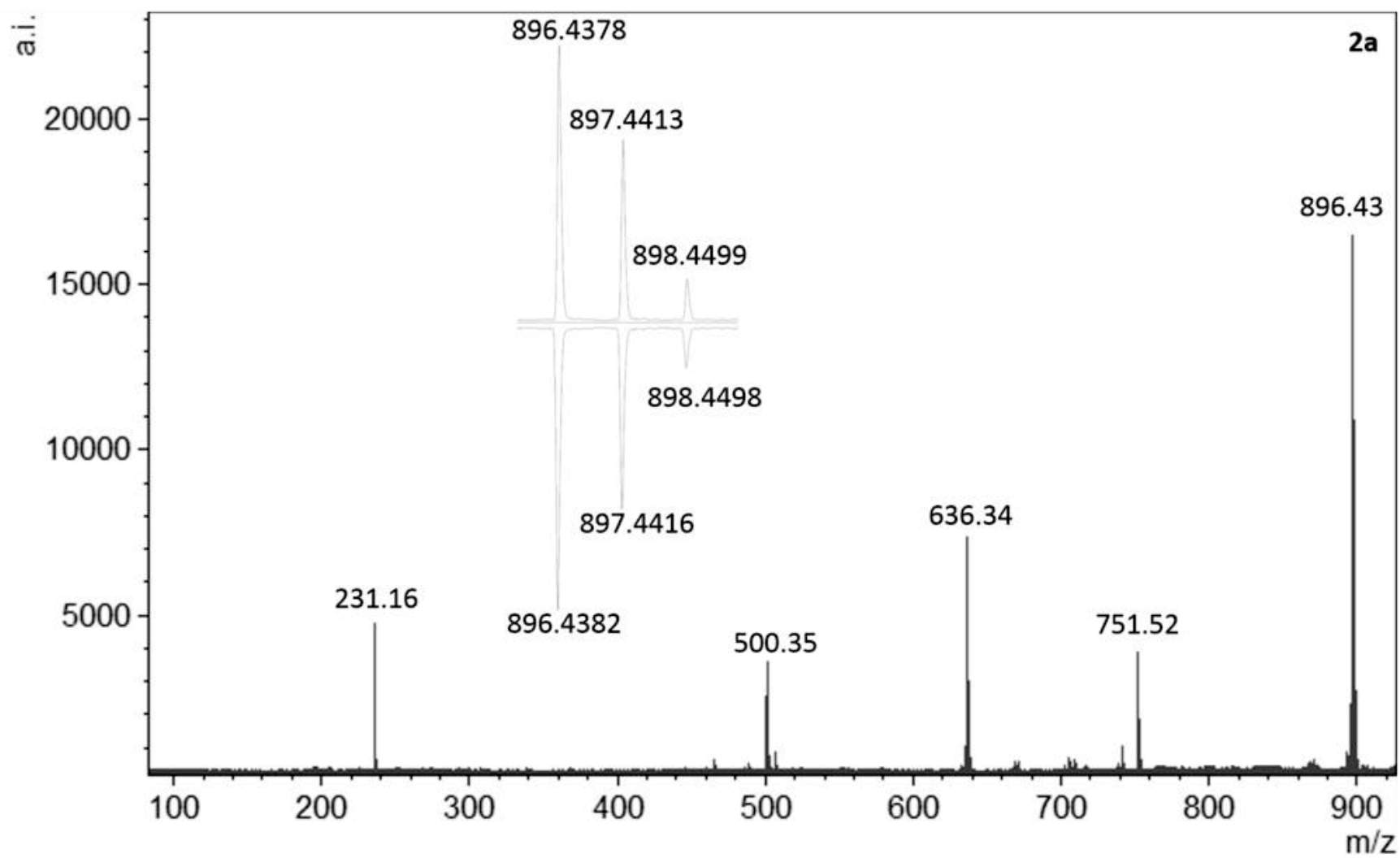


Figure S4. HR-MALDI spectrum of **2a**

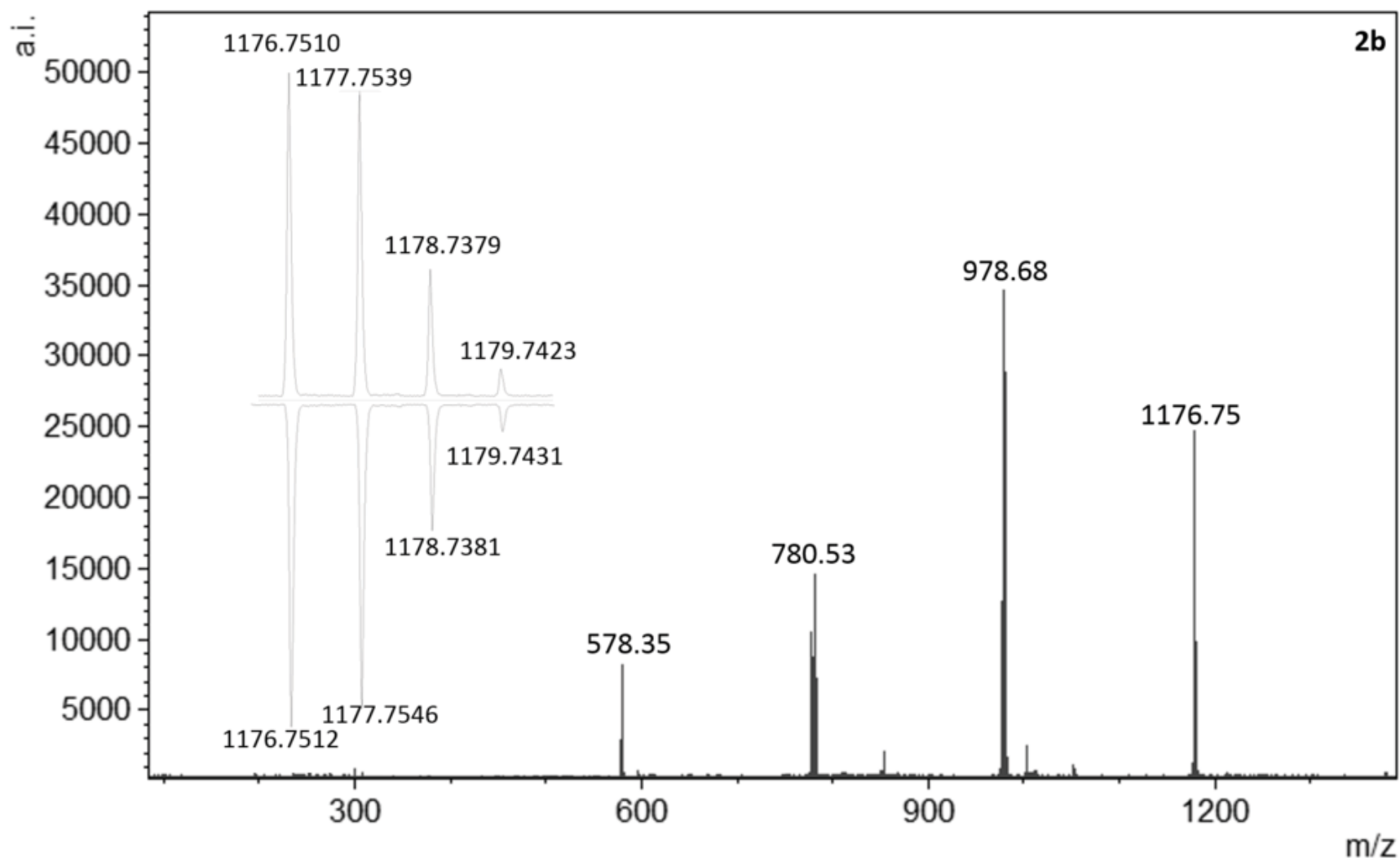


Figure S5. HR-MALDI spectrum of **2b**

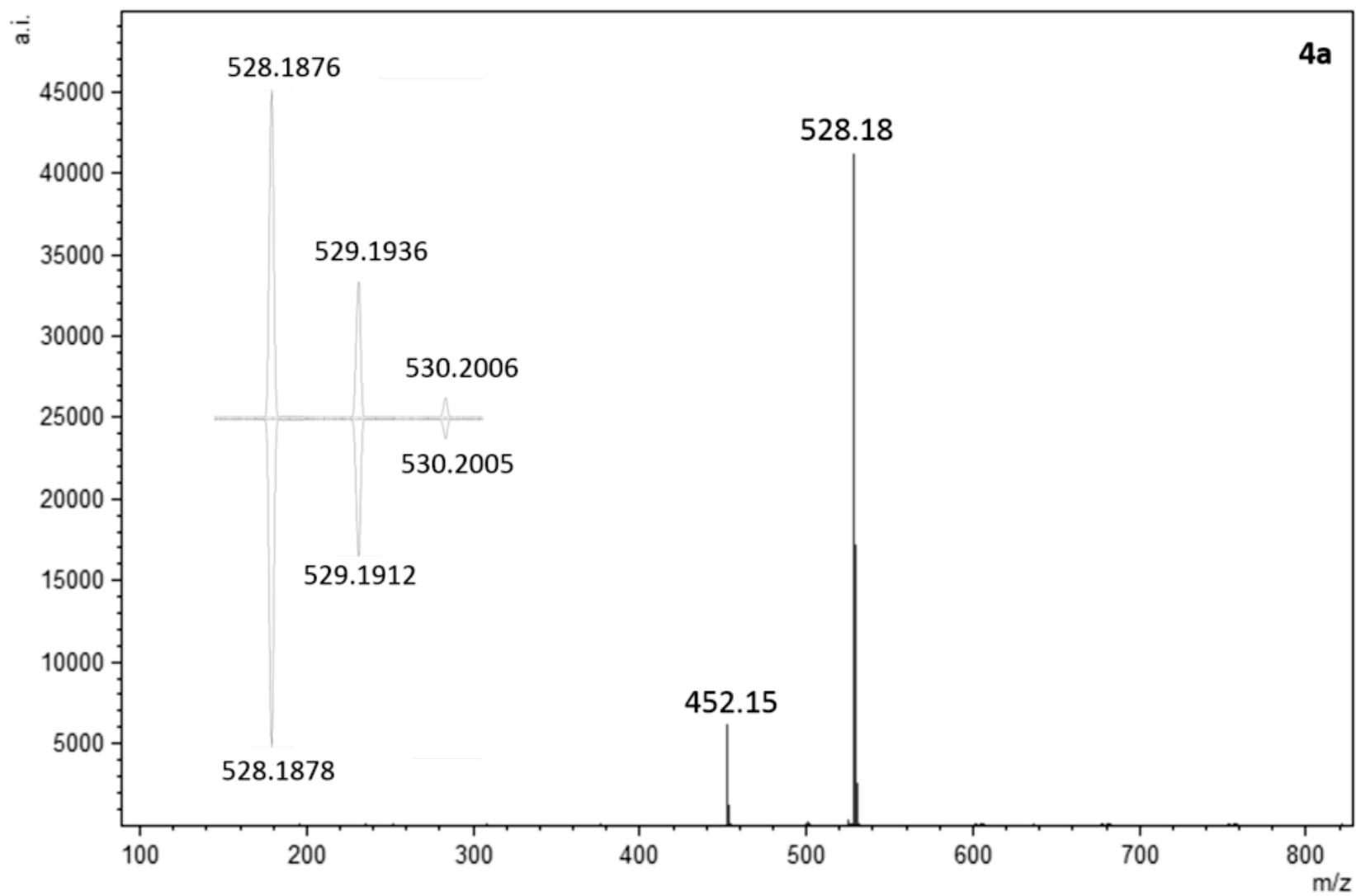


Figure S6. HR-MALDI spectrum of **4a**

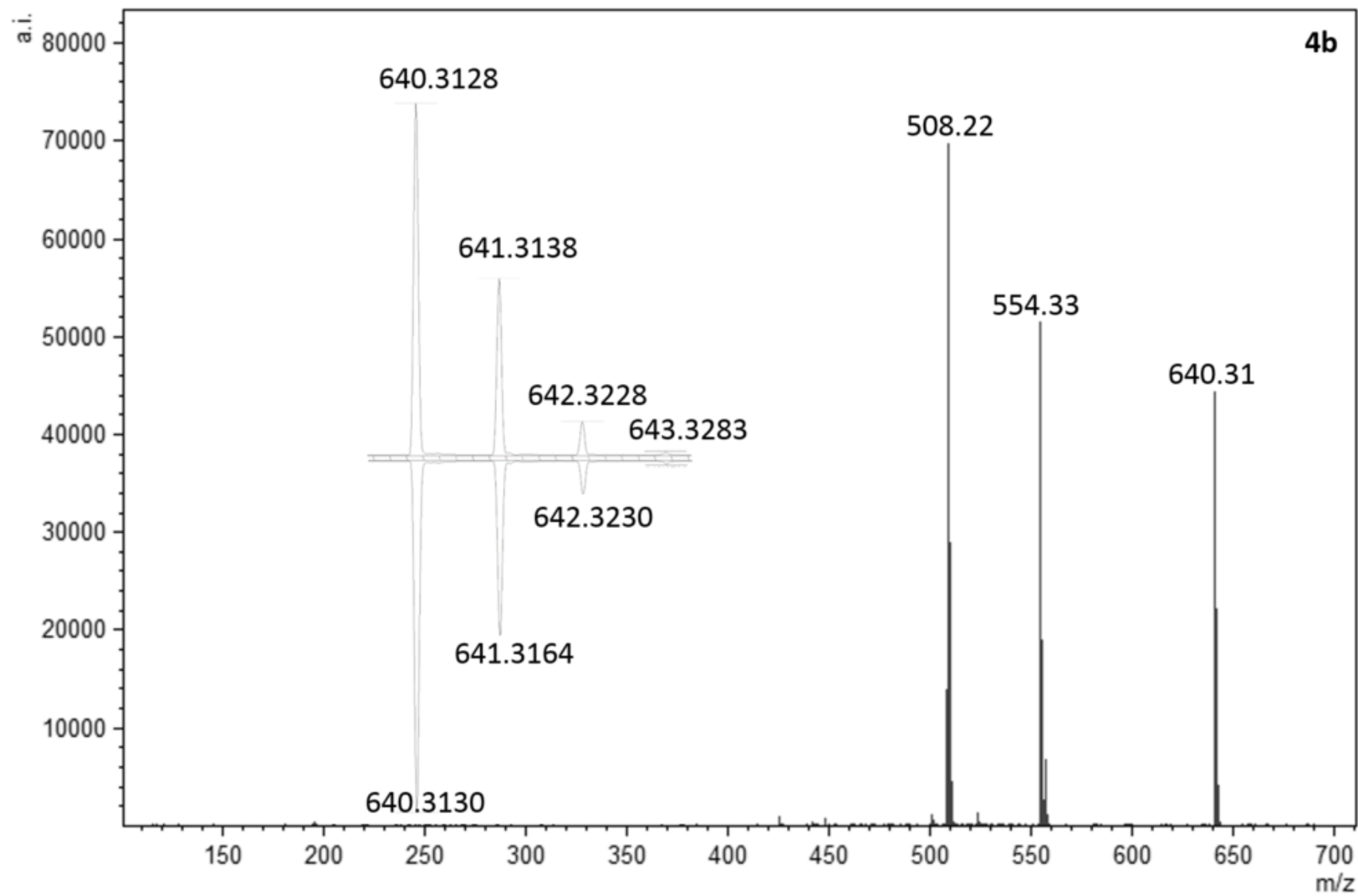


Figure S7. HR-MALDI spectrum of **4b**

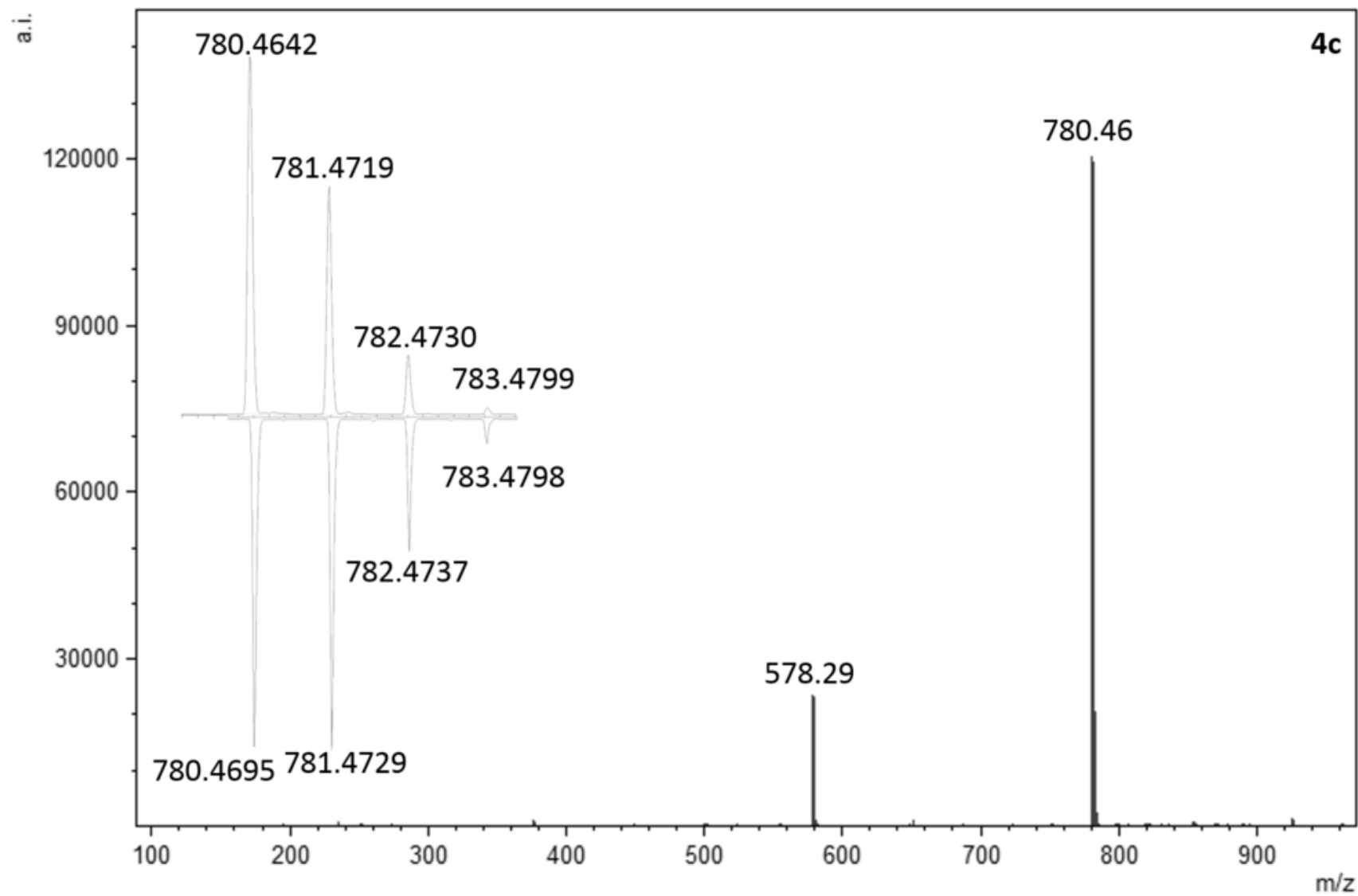


Figure S8. HR-MALDI spectrum of **4c**

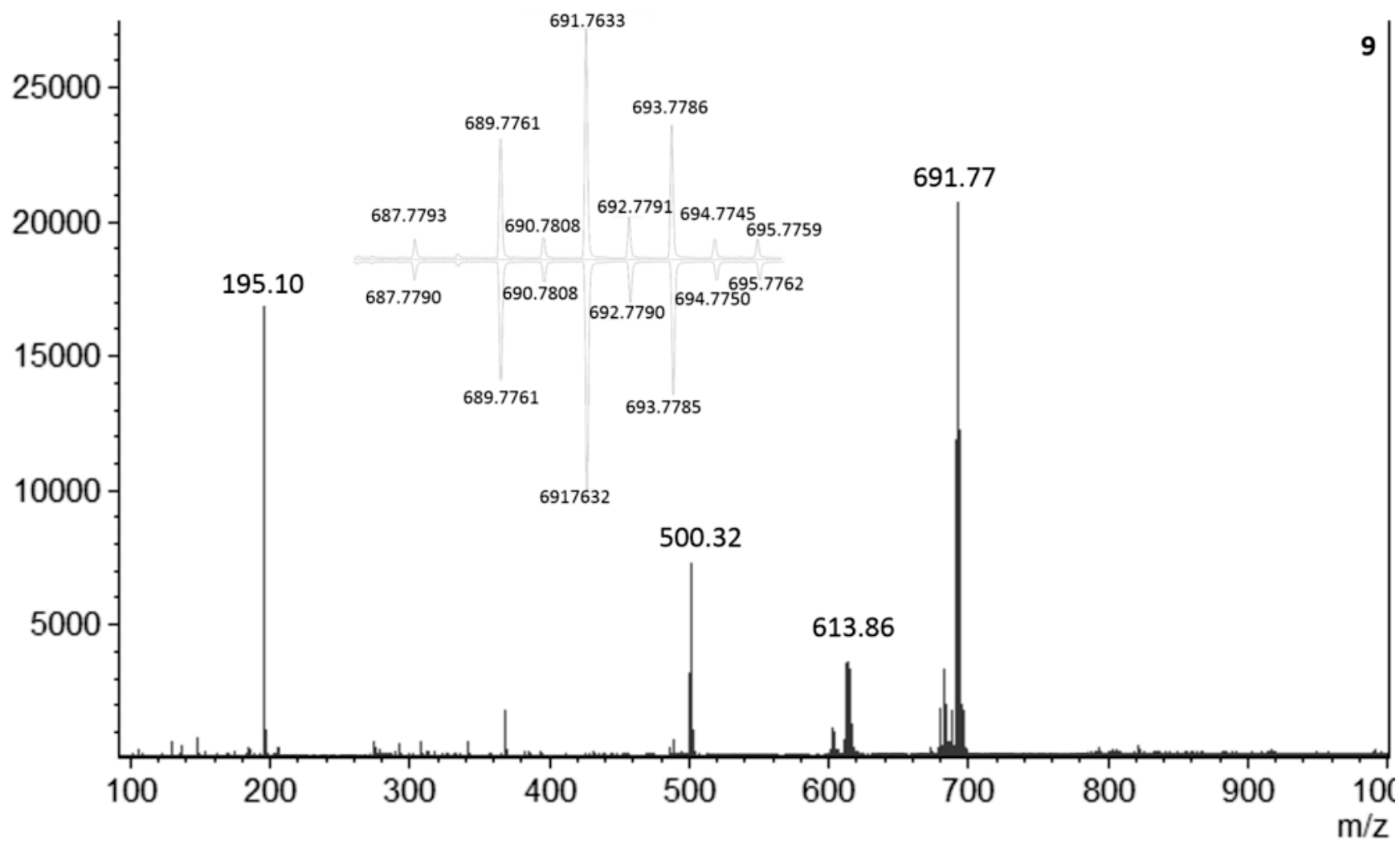


Figure S9. HR-MALDI spectrum of **9**

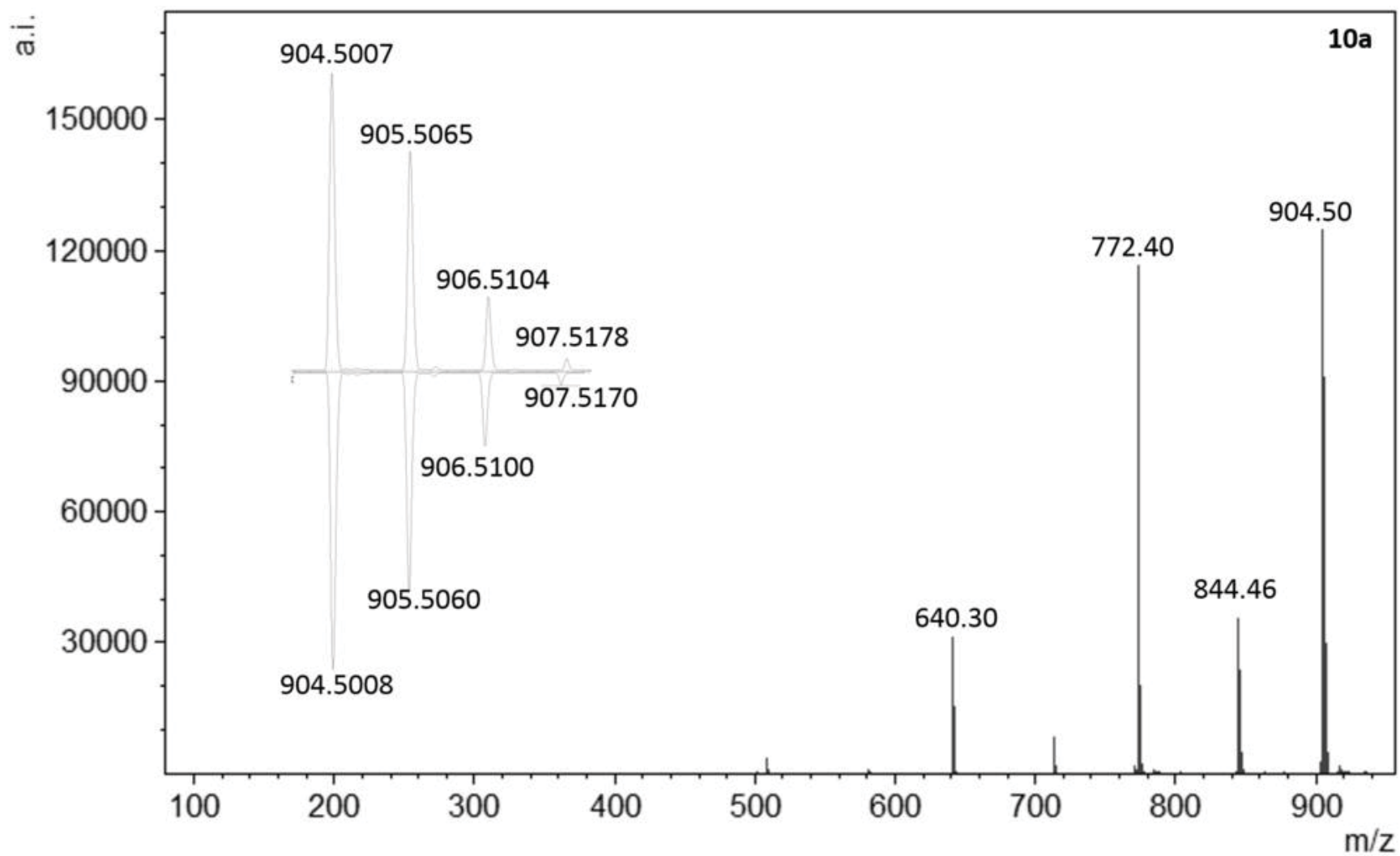


Figure S10 HR-MALDI spectrum of **10a**

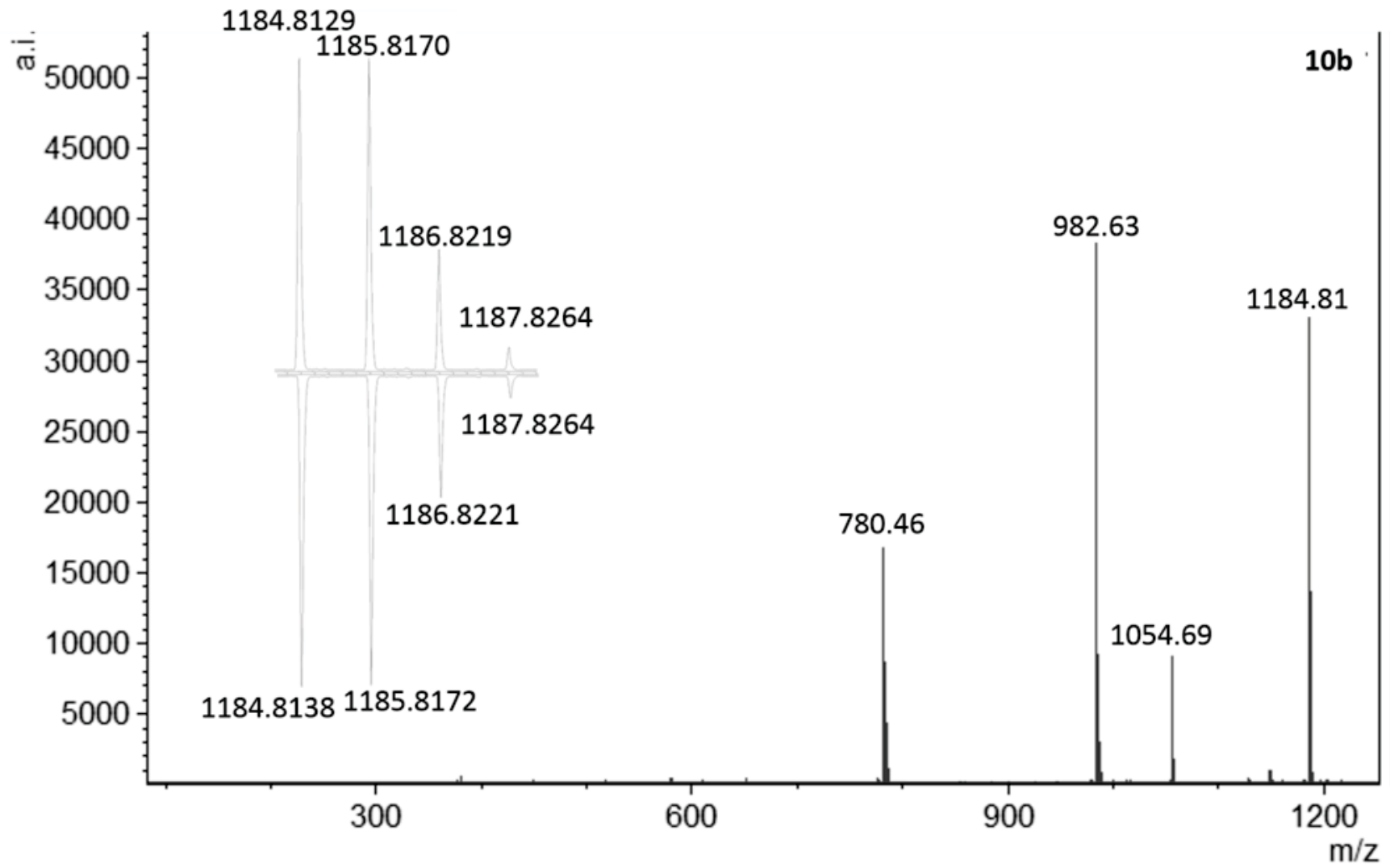


Figure S11. HR-MALDI spectrum of **10b**

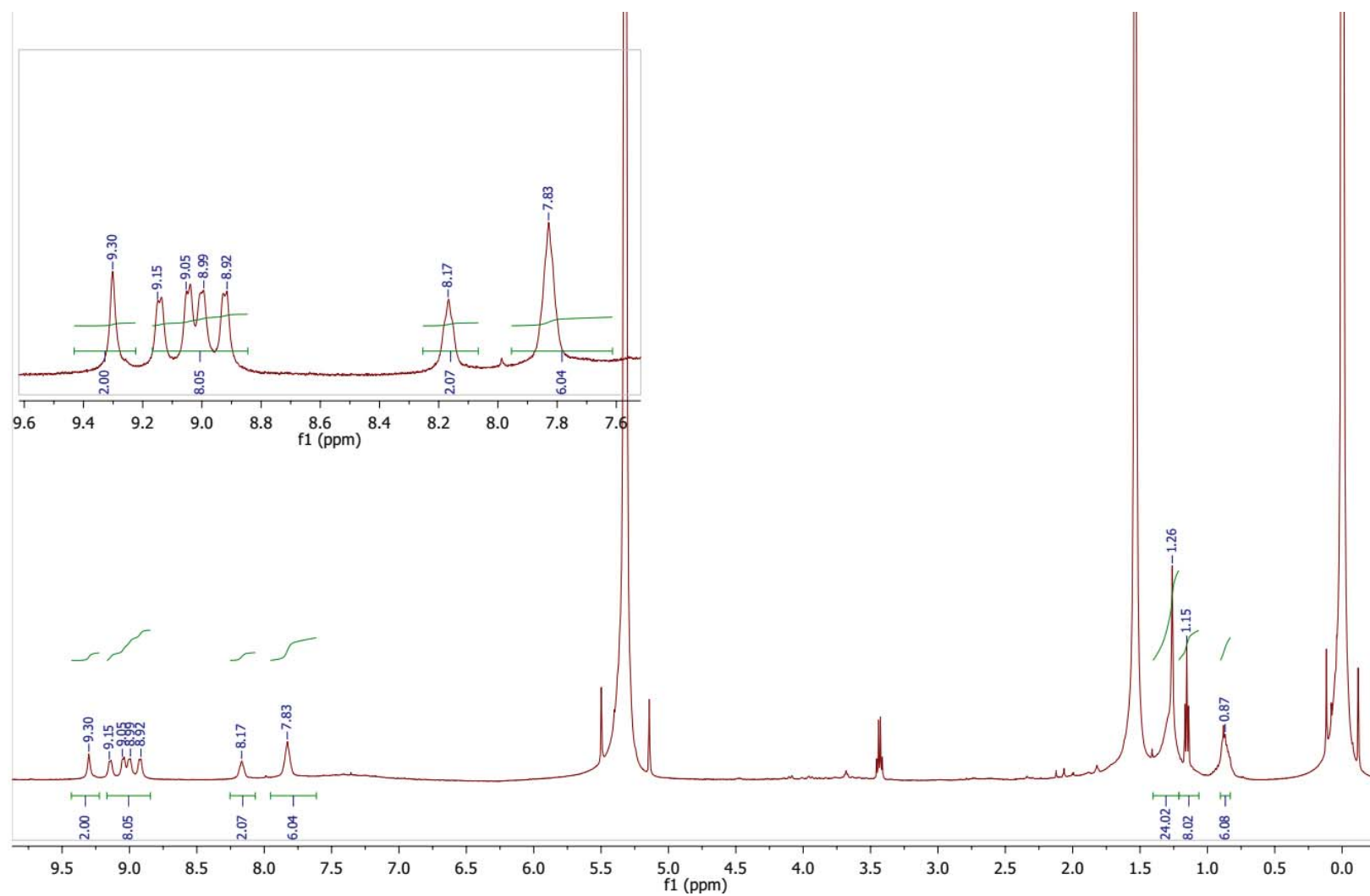


Figure S12. ^1H NMR spectrum of **1c**

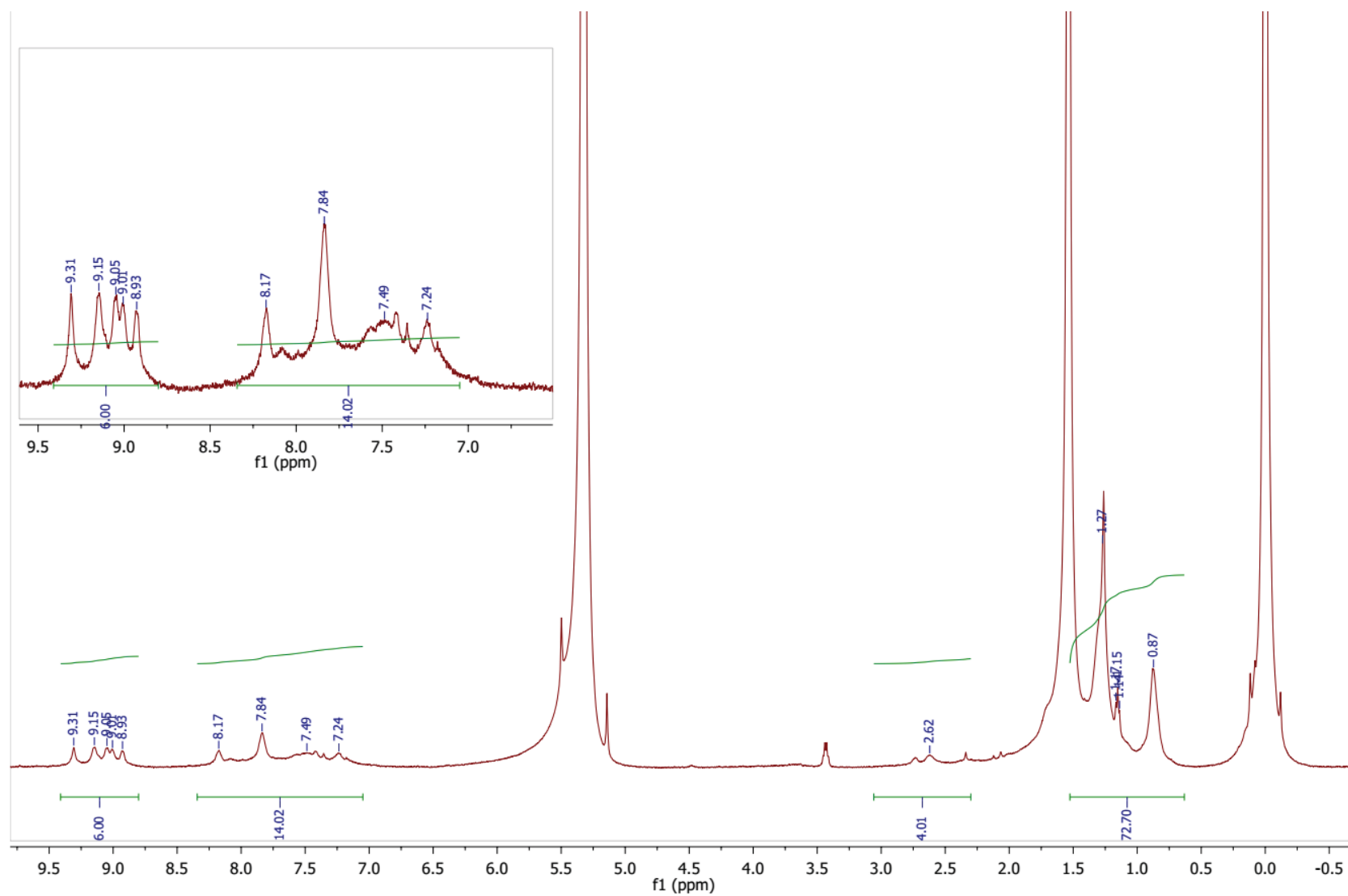


Figure S13. ^1H NMR spectrum of **2b**

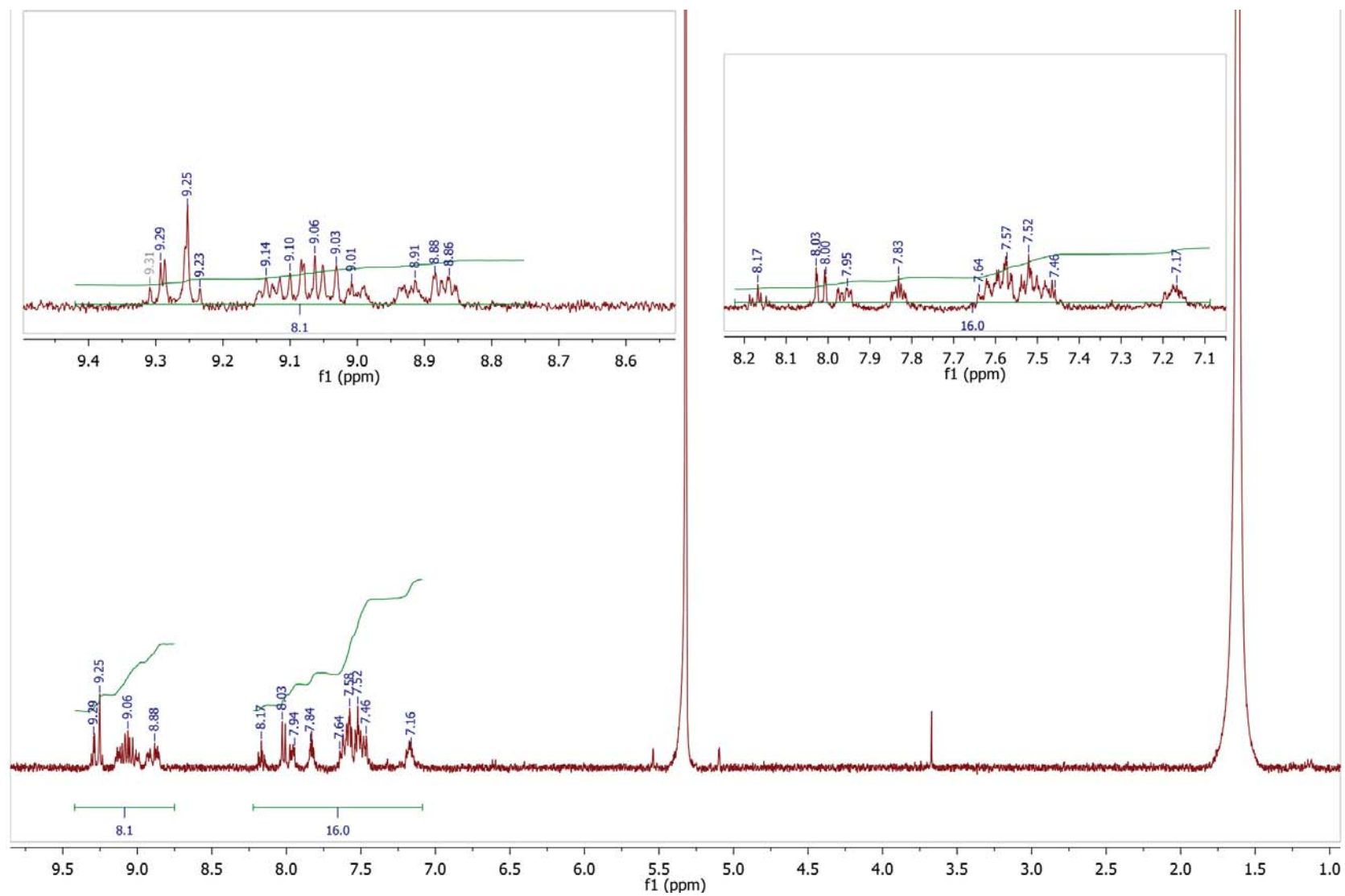


Figure S14. ¹H NMR spectrum of 4a

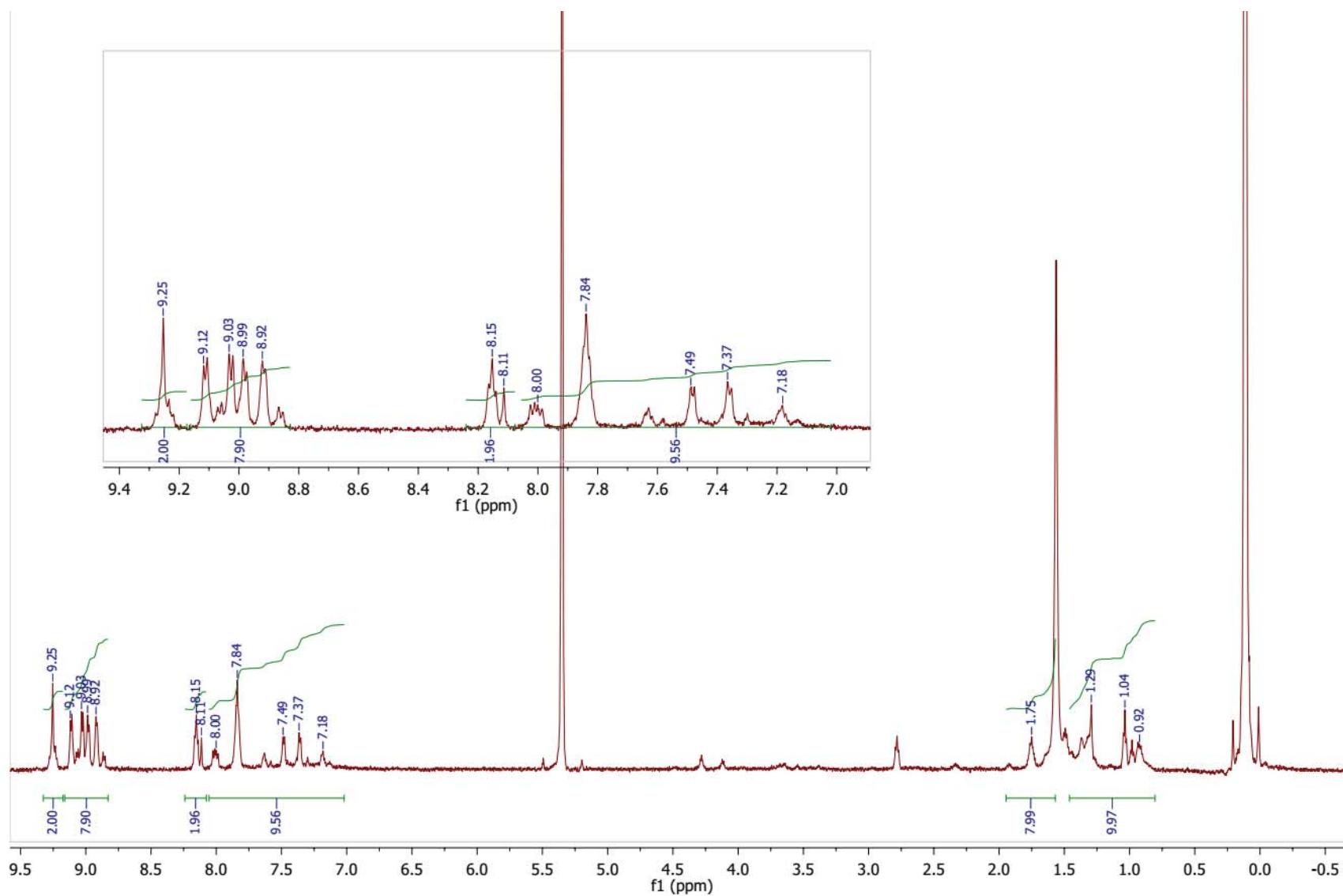


Figure S15. ^1H NMR spectrum of **4b**

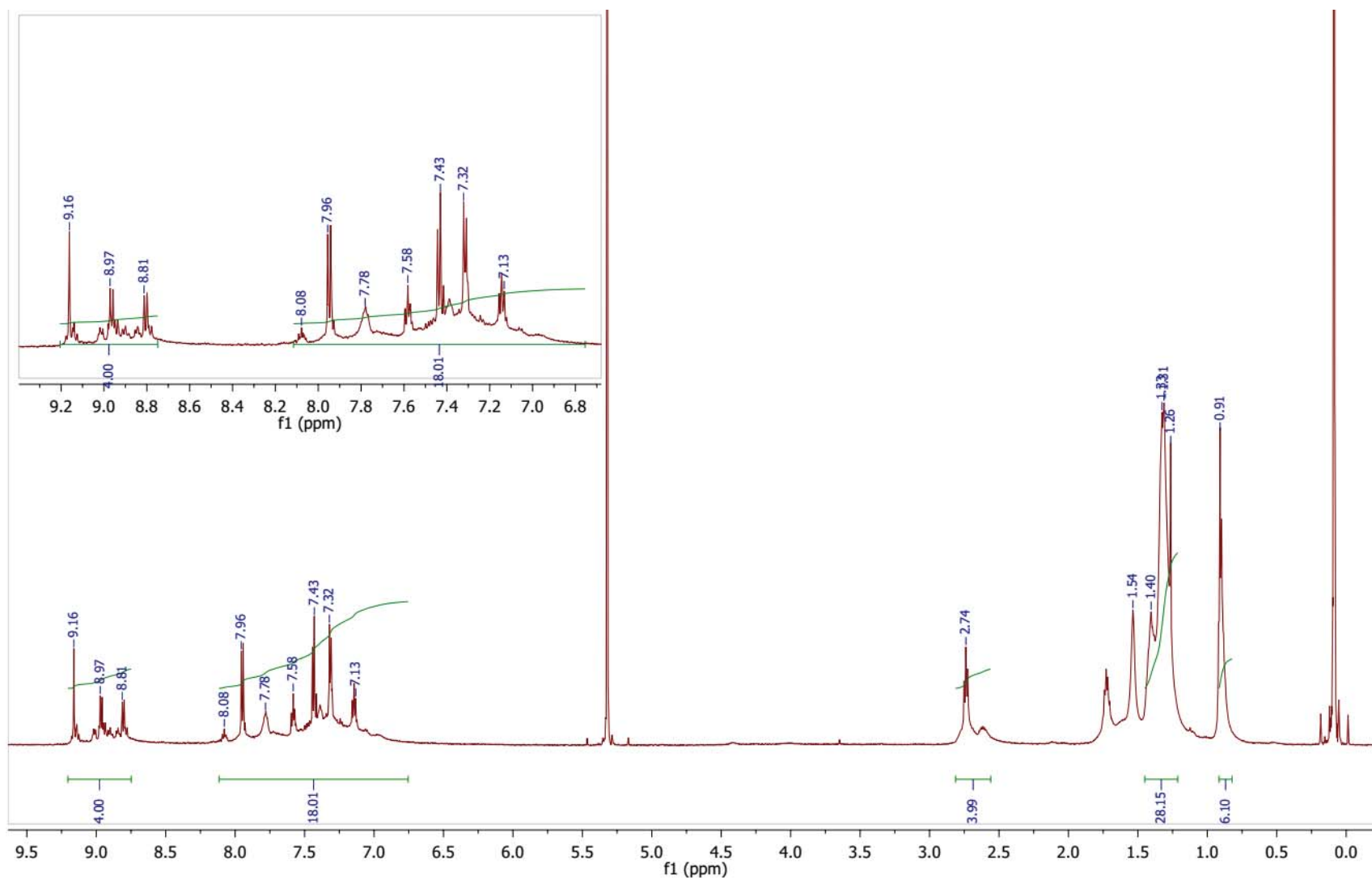


Figure S16. ^1H NMR spectrum of **4c**

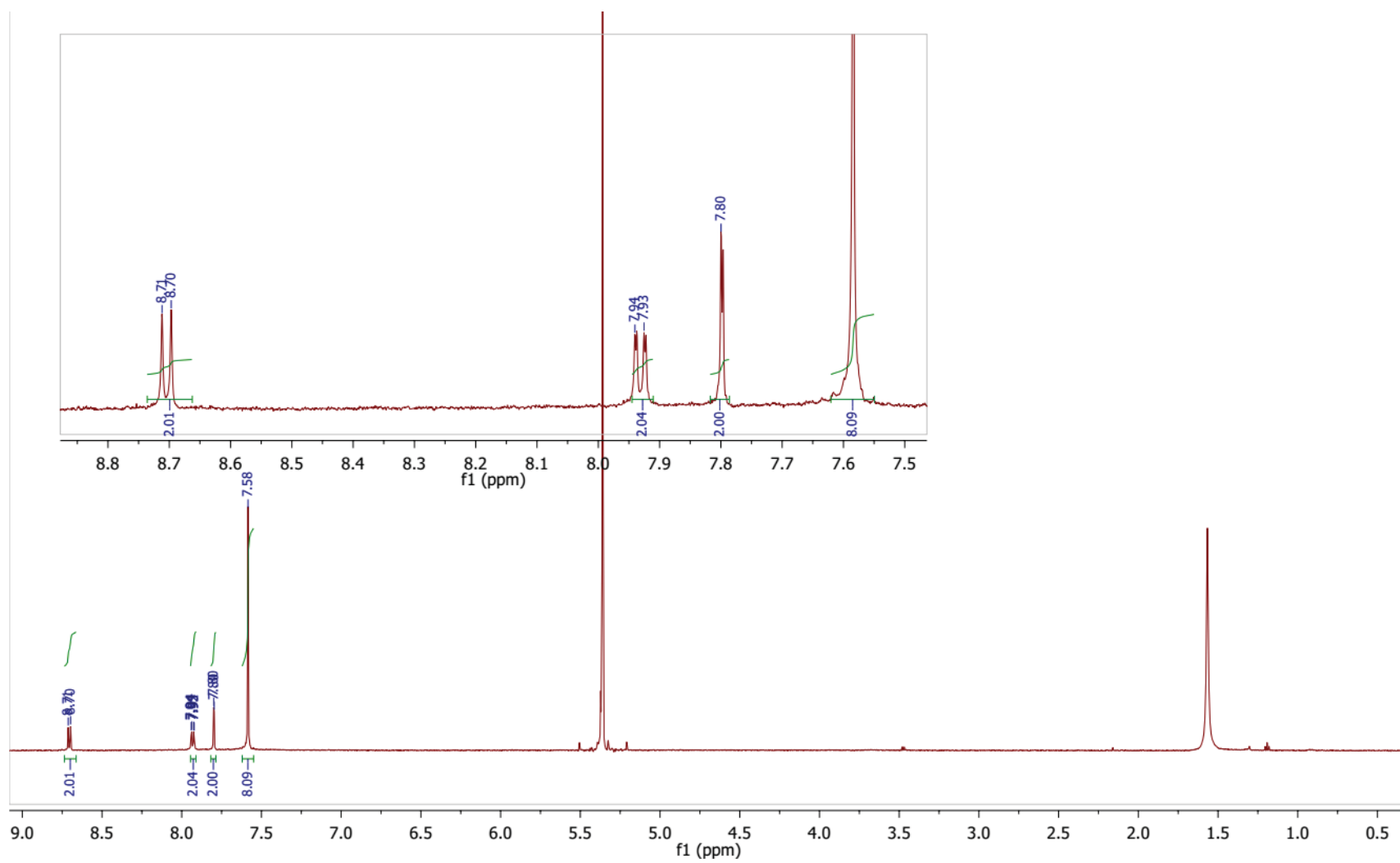


Figure S17. ^1H NMR spectrum of **9**

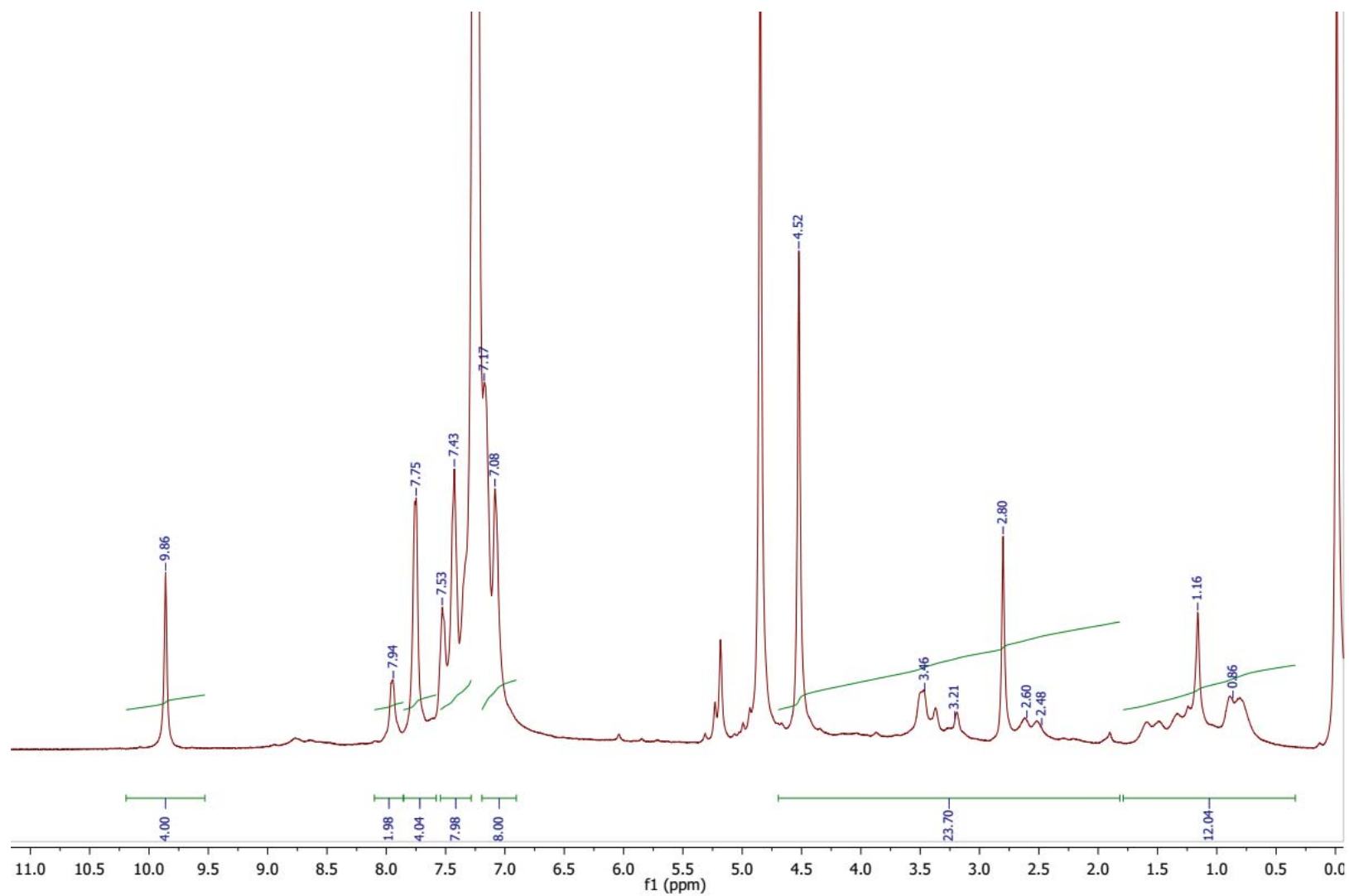


Figure S18. ¹H NMR spectrum of 10a

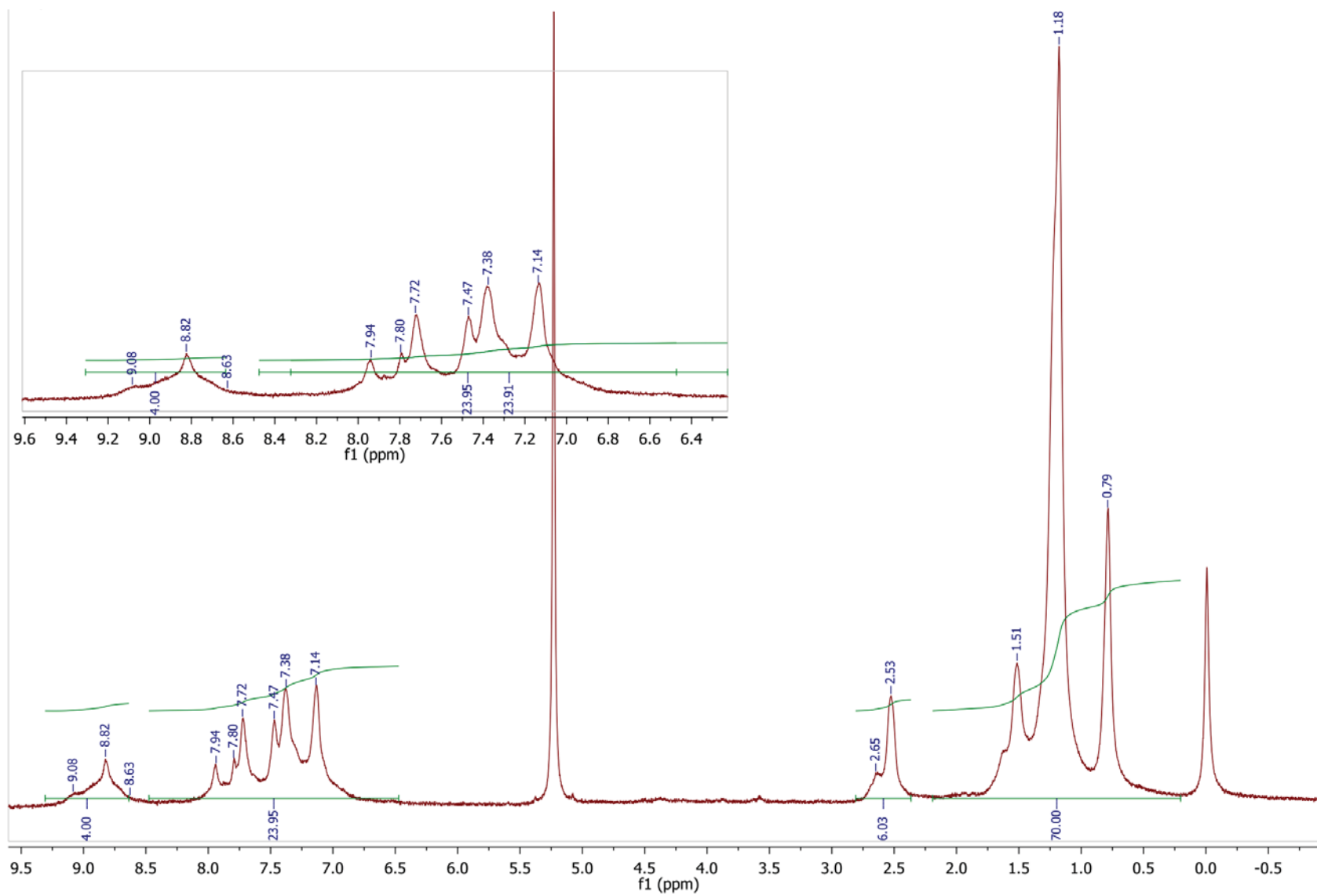


Figure S19. ^1H NMR spectrum of **10b**

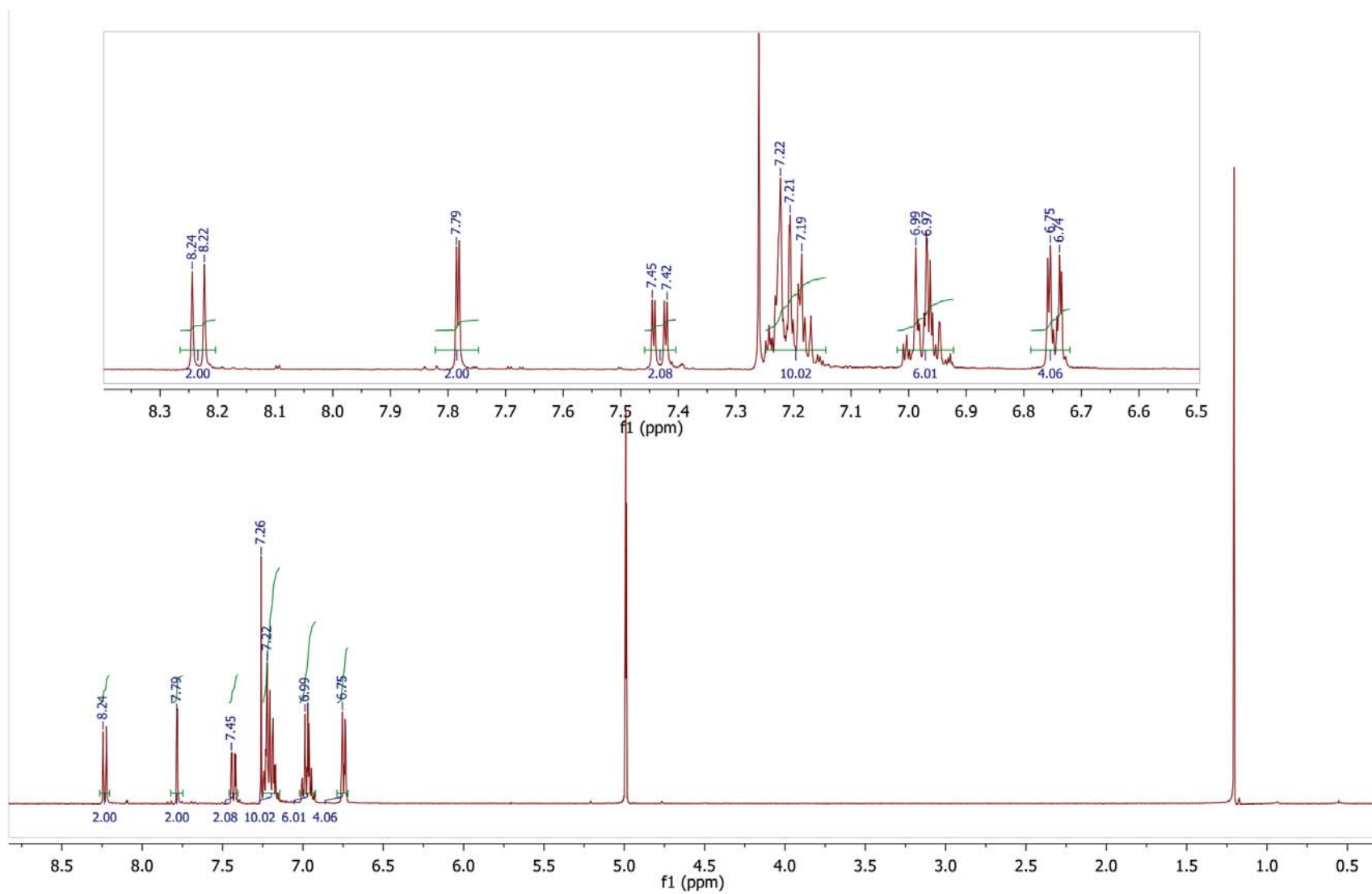


Figure S20. ^1H NMR spectrum of 13a

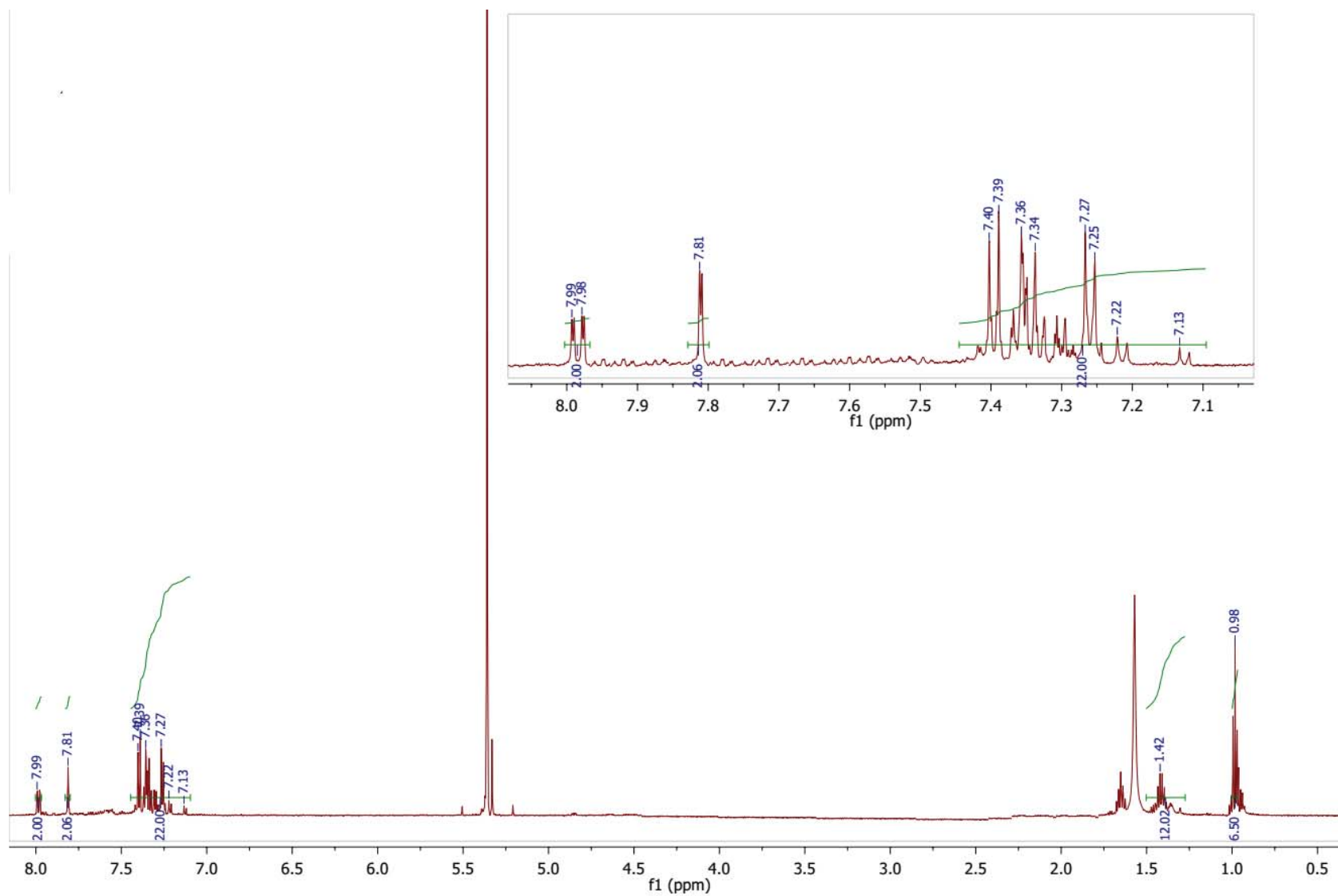


Figure S21. ¹H NMR spectrum of **13b**

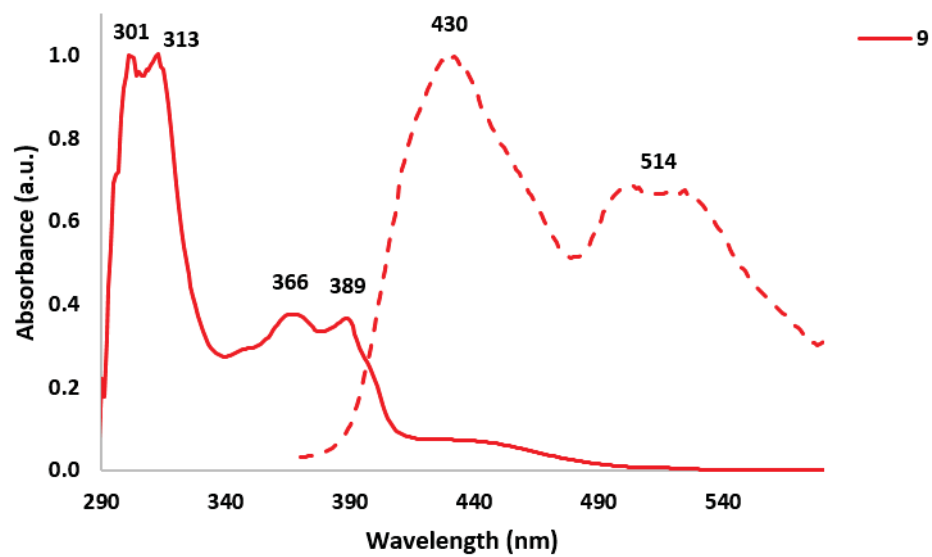
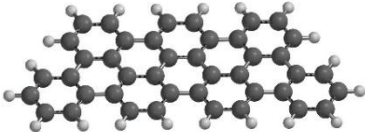
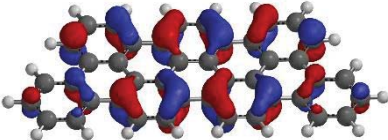
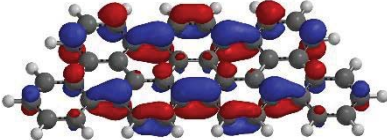
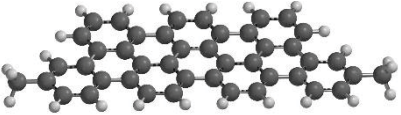
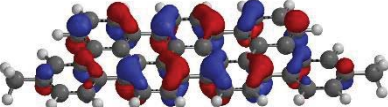
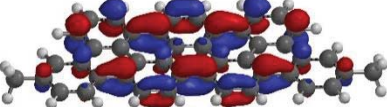
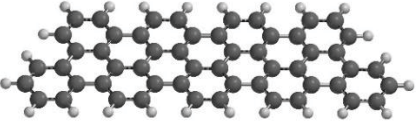
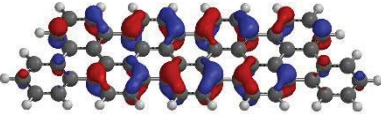
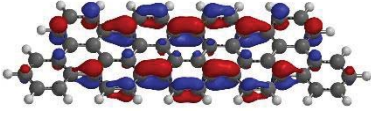


Figure S22. Normalized absorption and emission spectra for the pentaphene derivatives **9** in THF. The solid lines represent absorption spectra and the dotted lines correspond to emission spectra.

II. Computational details

Table S1. Optimized structures and HOMO-LUMO frontier orbitals of DBPH and TBTP at the level of the B₃LYP/6-31 G* basis set with R = H (1a and 2-H) or Me (1-Me and 2-Me) instead of the alkyl groups for simplicity.

No	Optimized structure	HOMO	LUMO
1a			
1Me			
2H			
2Me	