

Figure S1 *Location of the study area in the western Alps of Switzerland.*

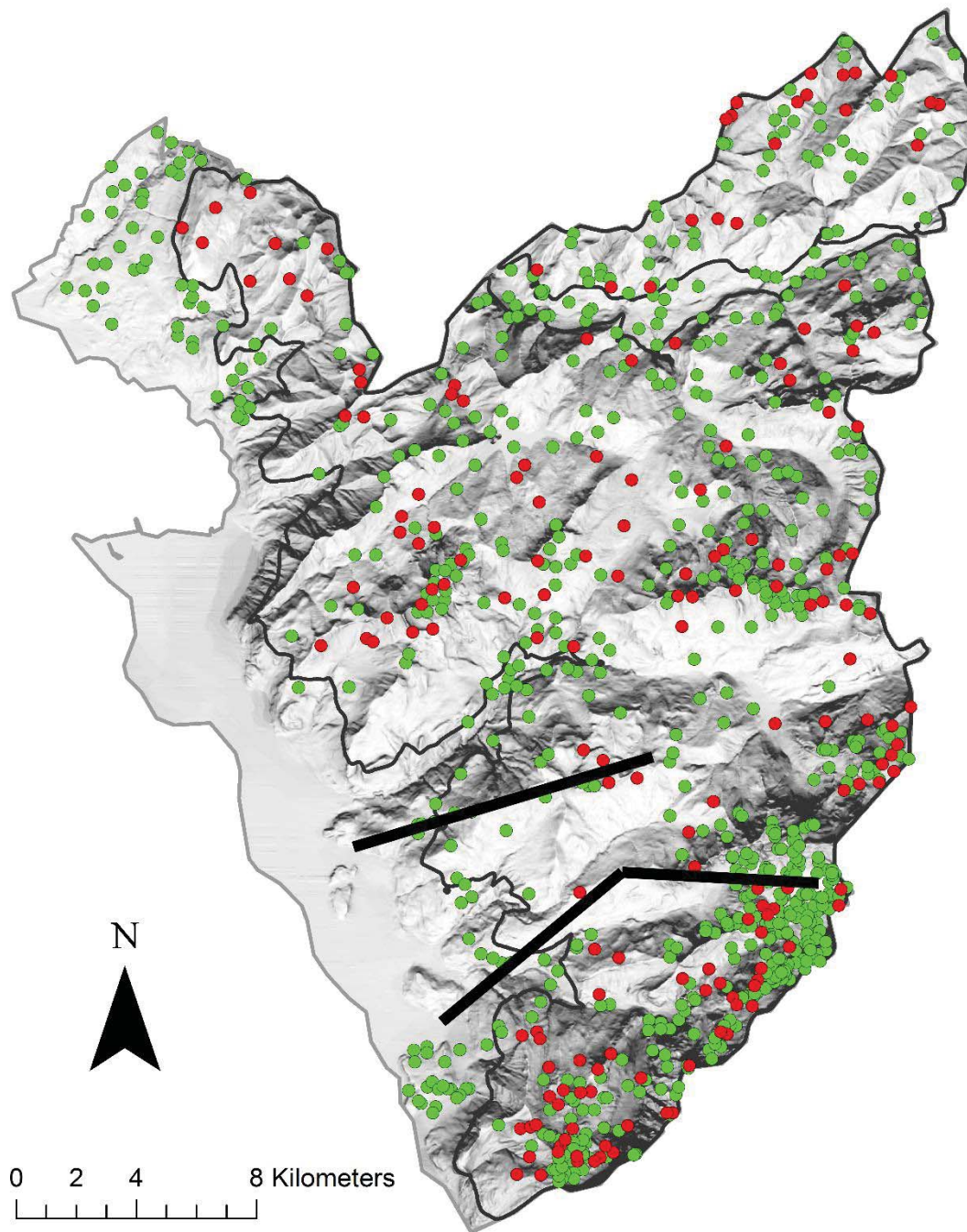


Fig. S1. Location of the study area in the western Alps of Switzerland. The dots (green and red) represent vegetation sampling sites. The red dots correspond to the vegetation sites where grasshoppers were also sampled. The gray line shows the limits of study area and the dark gray line shows the 1000 m isoline. The two black lines represent the approximate location of two elevation gradient transects where plants were collected for trait analyses.

Fig. S2. Larval weight of *Spodoptera littoralis* plotted onto a plant phylogeny (square root transformed). The trait mapped correspond to the mean larval weight of *Spodoptera littoralis* after 5 days of feeding on leaf plant samples, as a measure of plant palatability. Bigger circles indicate a high larval weight and a lower defence against herbivores in the plant.

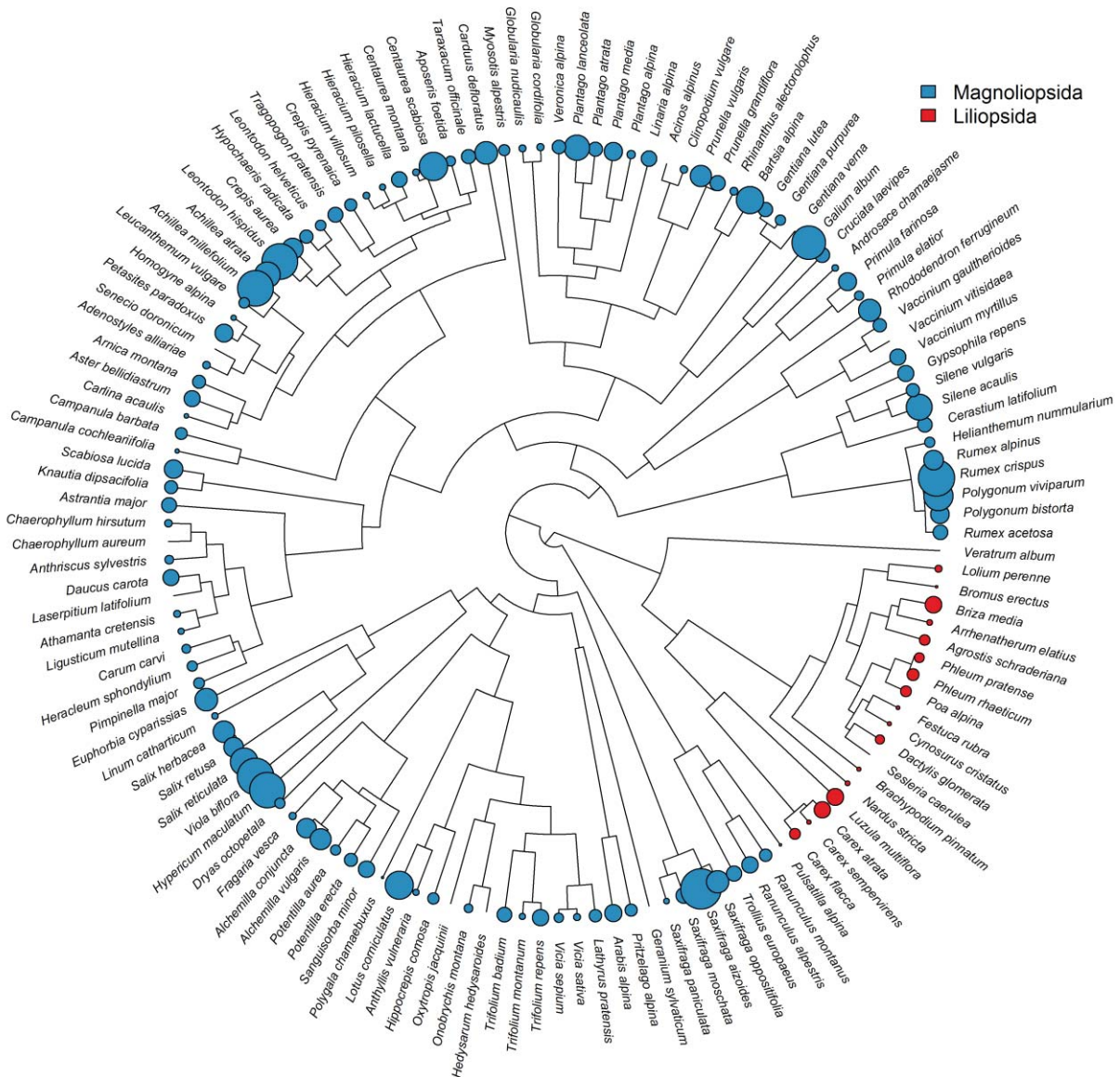


Table S1 *Species list observed on the sampling sites.*

Table S1. Species list observed on the sampling sites with their estimated abundance

Plot identity	Elevation	Species	Abundance
687	1074.4	CHORTHIPPUS BRUNNEUS	35
687	1074.4	MECOSTETHUS PARAPLEURUS	3
687	1074.4	PHOLIDOPTERA GRISEOAPTERA	3
687	1074.4	EUTHYSTIRA BRACHYPTERA	3
687	1074.4	NEMOBIUS SYLVESTRIS	3
687	1074.4	TETTIGONIA CANTANS	3
661	1077.2	CHORTHIPPUS PARALLELUS	75
661	1077.2	METRIOPTERA ROESELII	13
661	1077.2	OMOCESTUS VIRIDULUS	35
661	1077.2	POLYSARCUS DENTICAUDA	3
661	1077.2	STAURODERUS SCALARIS	13
661	1077.2	TETTIGONIA CANTANS	3
661	1077.2	GOMPHOCERIPPUS RUFUS	13
653	1079.9	CHORTHIPPUS APRICARIUS	3
653	1079.9	CHORTHIPPUS PARALLELUS	35
653	1079.9	EUTHYSTIRA BRACHYPTERA	13
653	1079.9	METRIOPTERA ROESELII	35
653	1079.9	METRIOPTERA SAUSSURIANA	13
653	1079.9	MIRAMELLA ALPINA	3
653	1079.9	OMOCESTUS VIRIDULUS	35
653	1079.9	PHOLIDOPTERA GRISEOAPTERA	3
653	1079.9	STAURODERUS SCALARIS	3
653	1079.9	TETTIGONIA VIRIDISSIMA	3
653	1079.9	STENOBOTHRUS LINEATUS	3
689	1087.2	CHORTHIPPUS PARALLELUS	35
689	1087.2	CHRYSOCHRAON DISPAR	3
689	1087.2	DECTICUS VERRUCIVORUS	3
689	1087.2	EUTHYSTIRA BRACHYPTERA	13
689	1087.2	METRIOPTERA ROESELII	3
689	1087.2	PLATYCLEIS ALBOPUNCTATAALB	3
689	1087.2	STAURODERUS SCALARIS	3
689	1087.2	STENOBOTHRUS LINEATUS	13
689	1087.2	CHORTHIPPUS BIGUTTULUS	35
689	1087.2	GOMPHOCERIPPUS RUFUS	13
670	1101.4	CHORTHIPPUS BIGUTTULUS	13
670	1101.4	CHORTHIPPUS PARALLELUS	13
670	1101.4	CHRYSOCHRAON DISPAR	3
670	1101.4	DECTICUS VERRUCIVORUS	13
670	1101.4	GRYLLUS CAMPESTRIS	3
670	1101.4	METRIOPTERA ROESELII	13

670	1101.4	PLATYCLEIS ALBOPUNCTATAALB	3
670	1101.4	STAURODERUS SCALARIS	3
670	1101.4	STENOBOTHRUS LINEATUS	3
670	1101.4	GOMPHOCERIPPUS RUFUS	13
673	1102.5	CHORTHIPPUS BIGUTTULUS	75
673	1102.5	CHORTHIPPUS PARALLELUS	75
673	1102.5	CHRYSOCHRAON DISPAR	13
673	1102.5	DECTICUS VERRUCIVORUS	13
673	1102.5	EUTHYSTIRA BRACHYPTERA	13
673	1102.5	GRYLLUS CAMPESTRIS	13
673	1102.5	METRIOPTERA ROESELII	13
673	1102.5	STAURODERUS SCALARIS	35
673	1102.5	STENOBOTHRUS LINEATUS	75
673	1102.5	TETTIGONIA CANTANS	3
676	1105.7	EUTHYSTIRA BRACHYPTERA	3
676	1105.7	METRIOPTERA ROESELII	13
676	1105.7	METRIOPTERA SAUSSURIANA	13
676	1105.7	MIRAMELLA ALPINA	3
676	1105.7	OMOCESTUS VIRIDULUS	3
676	1105.7	PHOLIDOPTERA GRISEOAPTERA	3
674	1119.8	CHORTHIPPUS BIGUTTULUS	35
674	1119.8	CHORTHIPPUS PARALLELUS	35
674	1119.8	DECTICUS VERRUCIVORUS	13
674	1119.8	METRIOPTERA ROESELII	13
674	1119.8	OMOCESTUS VIRIDULUS	13
674	1119.8	STENOBOTHRUS LINEATUS	13
890	1125	CHORTHIPPUS BIGUTTULUS	35
890	1125	CHORTHIPPUS PARALLELUS	13
890	1125	DECTICUS VERRUCIVORUS	3
890	1125	EUTHYSTIRA BRACHYPTERA	75
890	1125	METRIOPTERA ROESELII	3
890	1125	PHOLIDOPTERA GRISEOAPTERA	13
890	1125	STAURODERUS SCALARIS	3
890	1125	CHORTHIPPUS BRUNNEUS	35
890	1125	GOMPHOCERIPPUS RUFUS	3
890	1125	NEMOBIUS SYLVESTRIS	3
662	1133.9	CHORTHIPPUS DORSATUS	3
662	1133.9	CHORTHIPPUS PARALLELUS	35
662	1133.9	CHRYSOCHRAON DISPAR	3
662	1133.9	METRIOPTERA ROESELII	3
662	1133.9	METRIOPTERA SAUSSURIANA	3
662	1133.9	MIRAMELLA ALPINA	3
662	1133.9	OMOCESTUS VIRIDULUS	3
662	1133.9	STAURODERUS SCALARIS	3
662	1133.9	TETTIGONIA CANTANS	13
662	1133.9	CHORTHIPPUS BIGUTTULUS	13

659	1134.8	CHORTHIPPUS DORSATUS	75
659	1134.8	CHORTHIPPUS PARALLELUS	75
659	1134.8	METRIOPTERA ROESELII	35
659	1134.8	MIRAMELLA ALPINA	3
659	1134.8	PHOLIDOPTERA GRISEOPTERA	3
659	1134.8	STETHOPHYMA GROSSUM	13
659	1134.8	TETTIGONIA CANTANS	3
683	1146.9	CHORTHIPPUS BIGUTTULUS	13
683	1146.9	CHORTHIPPUS PARALLELUS	75
683	1146.9	DECTICUS VERRUCIVORUS	3
683	1146.9	EUTHYSTIRA BRACHYPTERA	3
683	1146.9	METRIOPTERA ROESELII	3
683	1146.9	NEMOBIUS SYLVESTRIS	3
683	1146.9	OMOCESTUS RUFIPES	35
683	1146.9	PHOLIDOPTERA GRISEOPTERA	3
683	1146.9	PLATYCLEIS ALBOPUNCTATAALB	13
683	1146.9	STAURODERUS SCALARIS	3
683	1146.9	STENOBOTHRUS LINEATUS	13
683	1146.9	GOMPHOCERIPPUS RUFUS	13
683	1146.9	METRIOPTERA SAUSSURIANA	3
666	1172.7	ARCYPTERA FUSCA	3
666	1172.7	CHORTHIPPUS BRUNNEUS	3
666	1172.7	CHORTHIPPUS PARALLELUS	13
666	1172.7	DECTICUS VERRUCIVORUS	3
666	1172.7	EUTHYSTIRA BRACHYPTERA	75
666	1172.7	GRYLLUS CAMPESTRIS	13
666	1172.7	METRIOPTERA ROESELII	13
666	1172.7	STAURODERUS SCALARIS	13
666	1172.7	STENOBOTHRUS LINEATUS	13
666	1172.7	CHORTHIPPUS BIGUTTULUS	35
666	1172.7	MECOSTETHUS PARAPLEURUS	13
666	1172.7	TETTIGONIA CANTANS	3
678	1176.6	CHORTHIPPUS PARALLELUS	75
678	1176.6	METRIOPTERA SAUSSURIANA	13
678	1176.6	MIRAMELLA ALPINA	3
678	1176.6	OMOCESTUS VIRIDULUS	35
678	1176.6	STAURODERUS SCALARIS	3
678	1176.6	METRIOPTERA ROESELII	3
655	1197	MIRAMELLA ALPINA	3
655	1197	OMOCESTUS VIRIDULUS	3
655	1197	POLYSARCUS DENTICAUDA	3
655	1197	STAURODERUS SCALARIS	3
655	1197	CHORTHIPPUS BIGUTTULUS	13
655	1197	METRIOPTERA ROESELII	3
655	1197	STENOBOTHRUS LINEATUS	3
677	1217.1	CHORTHIPPUS PARALLELUS	35

677	1217.1	METRIOPTERA ROESELII	13
677	1217.1	METRIOPTERA SAUSSURIANA	35
677	1217.1	MIRAMELLA ALPINA	13
677	1217.1	OMOCESTUS VIRIDULUS	3
677	1217.1	STAURODERUS SCALARIS	13
677	1217.1	TETTIGONIA CANTANS	13
677	1217.1	CHORTHIPPUS DORSATUS	13
677	1217.1	CHRYSOCHRAON DISPAR	3
656	1223.3	CHORTHIPPUS BIGUTTULUS	3
656	1223.3	CHORTHIPPUS MONTANUS	3
656	1223.3	CHORTHIPPUS PARALLELUS	75
656	1223.3	CHRYSOCHRAON DISPAR	13
656	1223.3	DECTICUS VERRUCIVORUS	3
656	1223.3	EUTHYSTIRA BRACHYPTERA	35
656	1223.3	METRIOPTERA ROESELII	13
656	1223.3	MIRAMELLA ALPINA	3
656	1223.3	OMOCESTUS VIRIDULUS	13
656	1223.3	PHOLIDOPTERA GRISEOAPTERA	3
656	1223.3	STAURODERUS SCALARIS	3
656	1223.3	TETTIGONIA VIRIDISSIMA	3
656	1223.3	CHORTHIPPUS DORSATUS	75
656	1223.3	TETTIGONIA CANTANS	3
679	1241.5	CHORTHIPPUS PARALLELUS	35
679	1241.5	EUTHYSTIRA BRACHYPTERA	3
679	1241.5	GOMPHOCERIPPUS RUFUS	75
679	1241.5	METRIOPTERA SAUSSURIANA	3
679	1241.5	PHOLIDOPTERA GRISEOAPTERA	3
679	1241.5	STAURODERUS SCALARIS	3
679	1241.5	GRYLLUS CAMPESTRIS	3
679	1241.5	STENOBOTHRUS LINEATUS	13
889	1258.5	MIRAMELLA ALPINA	3
889	1258.5	PHOLIDOPTERA GRISEOAPTERA	3
889	1258.5	METRIOPTERA SAUSSURIANA	3
686	1260.6	CHORTHIPPUS BIGUTTULUS	13
686	1260.6	CHORTHIPPUS PARALLELUS	75
686	1260.6	DECTICUS VERRUCIVORUS	3
686	1260.6	EUTHYSTIRA BRACHYPTERA	13
686	1260.6	GOMPHOCERIPPUS RUFUS	35
686	1260.6	METRIOPTERA ROESELII	13
686	1260.6	PLATYCLEIS ALBOPUNCTATAALB	13
686	1260.6	STAURODERUS SCALARIS	13
686	1260.6	STENOBOTHRUS LINEATUS	13
686	1260.6	CHORTHIPPUS DORSATUS	3
686	1260.6	TETTIGONIA CANTANS	3
663	1263.8	CHORTHIPPUS MONTANUS	3
663	1263.8	CHORTHIPPUS PARALLELUS	35

663	1263.8	CHRYSOCHRAON DISPAR	35
663	1263.8	DECTICUS VERRUCIVORUS	13
663	1263.8	EUTHYSTIRA BRACHYPTERA	13
663	1263.8	GRYLLUS CAMPESTRIS	3
663	1263.8	METRIOPTERA ROESELII	13
663	1263.8	OMOCESTUS VIRIDULUS	3
663	1263.8	STAURODERUS SCALARIS	35
663	1263.8	STENOBOTHRUS LINEATUS	35
663	1263.8	TETTIGONIA CANTANS	3
663	1263.8	CHORTHIPPUS BIGUTTULUS	35
724	1278.1	EUTHYSTIRA BRACHYPTERA	13
724	1278.1	METRIOPTERA SAUSSURIANA	3
724	1278.1	MIRAMELLA ALPINA	13
724	1278.1	OMOCESTUS VIRIDULUS	13
724	1278.1	PHOLIDOPTERA GRISEOPTERA	13
724	1278.1	STAURODERUS SCALARIS	13
724	1278.1	TETRIX BIPUNCTATA BIPUNCTA	3
724	1278.1	CHORTHIPPUS DORSATUS	13
724	1278.1	METRIOPTERA ROESELII	3
715	1309.8	CHORTHIPPUS PARALLELUS	35
715	1309.8	EUTHYSTIRA BRACHYPTERA	13
715	1309.8	METRIOPTERA ROESELII	3
715	1309.8	METRIOPTERA SAUSSURIANA	3
715	1309.8	MIRAMELLA ALPINA	13
715	1309.8	OMOCESTUS VIRIDULUS	13
715	1309.8	STAURODERUS SCALARIS	3
715	1309.8	TETTIGONIA VIRIDISSIMA	3
715	1309.8	CHORTHIPPUS APRICARIUS	13
715	1309.8	CHORTHIPPUS BIGUTTULUS	3
715	1309.8	GOMPHOCERIPPUS RUFUS	3
715	1309.8	STENOBOTHRUS LINEATUS	35
715	1309.8	TETTIGONIA CANTANS	3
698	1353.1	CHORTHIPPUS PARALLELUS	35
698	1353.1	EUTHYSTIRA BRACHYPTERA	3
698	1353.1	METRIOPTERA ROESELII	3
698	1353.1	METRIOPTERA SAUSSURIANA	13
698	1353.1	MIRAMELLA ALPINA	13
698	1353.1	OMOCESTUS VIRIDULUS	35
698	1353.1	TETTIGONIA CANTANS	3
698	1353.1	CHORTHIPPUS BIGUTTULUS	3
693	1380.1	CHORTHIPPUS PARALLELUS	3
693	1380.1	EUTHYSTIRA BRACHYPTERA	75
693	1380.1	METRIOPTERA ROESELII	3
693	1380.1	MIRAMELLA ALPINA	3
693	1380.1	OMOCESTUS VIRIDULUS	13
693	1380.1	STAURODERUS SCALARIS	3

693	1380.1	CHORTHIPPUS DORSATUS	35
693	1380.1	CHORTHIPPUS MONTANUS	75
693	1380.1	DECTICUS VERRUCIVORUS	3
693	1380.1	METRIOPTERA SAUSSURIANA	13
697	1385.3	CHORTHIPPUS BRUNNEUS	3
697	1385.3	CHORTHIPPUS PARALLELUS	35
697	1385.3	EUTHYSTIRA BRACHYPTERA	3
697	1385.3	METRIOPTERA SAUSSURIANA	35
697	1385.3	MIRAMELLA ALPINA	13
697	1385.3	STAURODERUS SCALARIS	3
697	1385.3	METRIOPTERA ROESELII	3
697	1385.3	OMOCESTUS VIRIDULUS	3
697	1385.3	TETTIGONIA CANTANS	3
694	1389.8	CHORTHIPPUS PARALLELUS	13
694	1389.8	METRIOPTERA SAUSSURIANA	13
694	1389.8	MIRAMELLA ALPINA	35
694	1389.8	OMOCESTUS VIRIDULUS	13
694	1389.8	POLYSARCUS DENTICAUDA	3
694	1389.8	CHORTHIPPUS MONTANUS	13
694	1389.8	METRIOPTERA ROESELII	13
694	1389.8	STETHOPHYMA GROSSUM	35
694	1389.8	CHORTHIPPUS PARALLELUS	13
726	1390.6	CHORTHIPPUS BRUNNEUS	3
726	1390.6	CHORTHIPPUS PARALLELUS	13
726	1390.6	METRIOPTERA SAUSSURIANA	13
726	1390.6	MIRAMELLA ALPINA	3
726	1390.6	STAURODERUS SCALARIS	3
726	1390.6	TETRIX BIPUNCTATA BIPUNCTA	13
726	1390.6	CHORTHIPPUS BIGUTTULUS	3
726	1390.6	TETTIGONIA CANTANS	3
708	1394.3	CHORTHIPPUS PARALLELUS	75
708	1394.3	DECTICUS VERRUCIVORUS	3
708	1394.3	EUTHYSTIRA BRACHYPTERA	3
708	1394.3	METRIOPTERA ROESELII	75
708	1394.3	MIRAMELLA ALPINA	13
708	1394.3	OMOCESTUS VIRIDULUS	75
708	1394.3	STAURODERUS SCALARIS	13
708	1394.3	STENOBOTHRUS LINEATUS	35
699	1396.6	CHORTHIPPUS PARALLELUS	75
699	1396.6	METRIOPTERA SAUSSURIANA	3
699	1396.6	MIRAMELLA ALPINA	3
699	1396.6	OMOCESTUS VIRIDULUS	35
699	1396.6	STAURODERUS SCALARIS	13
699	1396.6	METRIOPTERA ROESELII	3
699	1396.6	TETTIGONIA CANTANS	3
720	1396.6	EUTHYSTIRA BRACHYPTERA	3

720	1396.6	METRIOPTERA ROESELII	3
720	1396.6	METRIOPTERA SAUSSURIANA	3
720	1396.6	MIRAMELLA ALPINA	13
720	1396.6	STAURODERUS SCALARIS	3
720	1396.6	CHORTHIPPUS PARALLELUS	13
720	1396.6	STENOBOTHRUS LINEATUS	3
705	1403.9	CHORTHIPPUS BIGUTTULUS	75
705	1403.9	CHORTHIPPUS BRUNNEUS	3
705	1403.9	CHORTHIPPUS PARALLELUS	75
705	1403.9	DECTICUS VERRUCIVORUS	13
705	1403.9	EUTHYSTIRA BRACHYPTERA	75
705	1403.9	METRIOPTERA ROESELII	3
705	1403.9	STAURODERUS SCALARIS	3
705	1403.9	STENOBOTHRUS LINEATUS	75
705	1403.9	TETRIX TENUICORNIS	3
705	1403.9	CHORTHIPPUS DORSATUS	3
705	1403.9	MECOSTETHUS PARAPLEURUS	13
692	1415.9	CHORTHIPPUS PARALLELUS	35
692	1415.9	OMOCESTUS VIRIDULUS	13
692	1415.9	MIRAMELLA ALPINA	13
717	1417.7	CHORTHIPPUS PARALLELUS	75
717	1417.7	EUTHYSTIRA BRACHYPTERA	35
717	1417.7	OMOCESTUS VIRIDULUS	35
717	1417.7	STENOBOTHRUS LINEATUS	75
717	1417.7	CHORTHIPPUS BIGUTTULUS	75
717	1417.7	METRIOPTERA ROESELII	3
717	1417.7	METRIOPTERA SAUSSURIANA	3
723	1422.8	EUTHYSTIRA BRACHYPTERA	13
723	1422.8	GOMPHOCERIPPUS RUFUS	75
723	1422.8	PHOLIDOPTERA GRISEOAPTERA	3
723	1422.8	PODISMA PEDESTRIS	3
723	1422.8	STAURODERUS SCALARIS	3
723	1422.8	CHORTHIPPUS PARALLELUS	35
723	1422.8	GRYLLUS CAMPESTRIS	3
723	1422.8	METRIOPTERA SAUSSURIANA	13
723	1422.8	PSOPHUS STRIDULUS	13
723	1422.8	STENOBOTHRUS LINEATUS	3
690	1426.2	CHORTHIPPUS PARALLELUS	35
690	1426.2	METRIOPTERA ROESELII	3
690	1426.2	METRIOPTERA SAUSSURIANA	13
690	1426.2	MIRAMELLA ALPINA	3
690	1426.2	OMOCESTUS VIRIDULUS	35
691	1442.4	CHORTHIPPUS PARALLELUS	13
691	1442.4	EUTHYSTIRA BRACHYPTERA	3
691	1442.4	METRIOPTERA ROESELII	3
691	1442.4	MIRAMELLA ALPINA	3

691	1442.4	OMOCESTUS VIRIDULUS	13
691	1442.4	POLYSARCUS DENTICAUDA	3
691	1442.4	STAURODERUS SCALARIS	3
691	1442.4	CHORTHIPPUS BIGUTTULUS	3
691	1442.4	CHORTHIPPUS MONTANUS	13
691	1442.4	METRIOPTERA SAUSSURIANA	3
710	1442.4	CHORTHIPPUS PARALLELUS	13
710	1442.4	EUTHYSTIRA BRACHYPTERA	13
710	1442.4	METRIOPTERA SAUSSURIANA	3
710	1442.4	MIRAMELLA ALPINA	3
710	1442.4	OMOCESTUS VIRIDULUS	13
710	1442.4	POLYSARCUS DENTICAUDA	3
710	1442.4	STAURODERUS SCALARIS	35
710	1442.4	CHORTHIPPUS BIGUTTULUS	35
710	1442.4	CHORTHIPPUS DORSATUS	75
710	1442.4	METRIOPTERA ROESELII	3
710	1442.4	TETTIGONIA CANTANS	13
696	1443.7	CHORTHIPPUS BIGUTTULUS	3
696	1443.7	CHORTHIPPUS PARALLELUS	75
696	1443.7	DECTICUS VERRUCIVORUS	3
696	1443.7	EUTHYSTIRA BRACHYPTERA	3
696	1443.7	METRIOPTERA ROESELII	13
696	1443.7	MIRAMELLA ALPINA	35
696	1443.7	OMOCESTUS VIRIDULUS	75
696	1443.7	STENOBOTHRUS LINEATUS	13
696	1443.7	CHORTHIPPUS DORSATUS	3
696	1443.7	CHORTHIPPUS MONTANUS	75
696	1443.7	METRIOPTERA SAUSSURIANA	13
696	1443.7	STETHOPHYMA GROSSUM	13
718	1455.9	CHORTHIPPUS PARALLELUS	75
718	1455.9	METRIOPTERA SAUSSURIANA	13
718	1455.9	MIRAMELLA ALPINA	35
718	1455.9	OMOCESTUS VIRIDULUS	75
718	1455.9	POLYSARCUS DENTICAUDA	3
718	1455.9	CHORTHIPPUS BRUNNEUS	13
718	1455.9	STENOBOTHRUS LINEATUS	35
718	1455.9	STETHOPHYMA GROSSUM	3
700	1464.3	ARCYPTERA FUSCA	3
700	1464.3	CHORTHIPPUS APRICARIUS	3
700	1464.3	CHORTHIPPUS BIGUTTULUS	75
700	1464.3	CHORTHIPPUS PARALLELUS	75
700	1464.3	PSOPHUS STRIDULUS	13
700	1464.3	STAURODERUS SCALARIS	35
700	1464.3	STENOBOTHRUS LINEATUS	35
700	1464.3	TETTIGONIA CANTANS	13
700	1464.3	EUTHYSTIRA BRACHYPTERA	3

700	1464.3	METRIOPTERA SAUSSURIANA	3
729	1479.4	CHORTHIPPUS BIGUTTULUS	75
729	1479.4	CHORTHIPPUS PARALLELUS	13
729	1479.4	EUTHYSTIRA BRACHYPTERA	35
729	1479.4	METRIOPTERA SAUSSURIANA	35
729	1479.4	OMOCESTUS VIRIDULUS	13
729	1479.4	STAURODERUS SCALARIS	13
728	1482.3	EUTHYSTIRA BRACHYPTERA	3
728	1482.3	TETRIX BIPUNCTATA BIPUNCTA	3
712	1494.8	CHORTHIPPUS PARALLELUS	13
712	1494.8	MIRAMELLA ALPINA	35
712	1494.8	OMOCESTUS VIRIDULUS	35
712	1494.8	STETHOPHYMA GROSSUM	3
722	1497.1	CHORTHIPPUS BIGUTTULUS	35
722	1497.1	CHORTHIPPUS BRUNNEUS	3
722	1497.1	PHOLIDOPTERA GRISEOAPTERA	3
722	1497.1	PSOPHUS STRIDULUS	3
722	1497.1	STAURODERUS SCALARIS	3
722	1497.1	TETTIGONIA CANTANS	3
722	1497.1	GOMPHOCERIPPUS RUFUS	3
722	1497.1	METRIOPTERA SAUSSURIANA	3
722	1497.1	OEDIPODA GERMANICA	13
714	1498.1	CHORTHIPPUS PARALLELUS	13
714	1498.1	METRIOPTERA SAUSSURIANA	13
714	1498.1	MIRAMELLA ALPINA	35
714	1498.1	OMOCESTUS VIRIDULUS	35
714	1498.1	STAURODERUS SCALARIS	75
714	1498.1	CHORTHIPPUS BRUNNEUS	3
703	1512.8	CHORTHIPPUS PARALLELUS	75
703	1512.8	MIRAMELLA ALPINA	3
703	1512.8	OMOCESTUS VIRIDULUS	35
703	1512.8	STAURODERUS SCALARIS	35
703	1512.8	STENOBOTHRUS LINEATUS	3
703	1512.8	CHORTHIPPUS BIGUTTULUS	13
703	1512.8	METRIOPTERA SAUSSURIANA	13
703	1512.8	TETTIGONIA CANTANS	3
732	1520.1	MIRAMELLA ALPINA	13
725	1526.9	CHORTHIPPUS BIGUTTULUS	3
725	1526.9	CHORTHIPPUS PARALLELUS	3
725	1526.9	EUTHYSTIRA BRACHYPTERA	75
725	1526.9	LEPTOPHYES PUNCTATISSIMA	3
725	1526.9	METRIOPTERA SAUSSURIANA	3
725	1526.9	MIRAMELLA ALPINA	13
725	1526.9	POLYSARCUS DENTICAUDA	13
725	1526.9	STAURODERUS SCALARIS	13
725	1526.9	TETTIGONIA CANTANS	3

727	1529.4	CHORTHIPPUS BIGUTTULUS	75
727	1529.4	EUTHYSTIRA BRACHYPTERA	3
727	1529.4	OMOCESTUS VIRIDULUS	3
727	1529.4	PHOLIDOPTERA GRISEOAPTERA	3
727	1529.4	STAURODERUS SCALARIS	13
727	1529.4	STENOBOTHRUS LINEATUS	3
727	1529.4	DECTICUS VERRUCIVORUS	3
727	1529.4	METRIOPTERA ROESELII	3
746	1534.7	EUTHYSTIRA BRACHYPTERA	35
746	1534.7	METRIOPTERA SAUSSURIANA	13
746	1534.7	OMOCESTUS VIRIDULUS	13
746	1534.7	STAURODERUS SCALARIS	3
746	1534.7	CHORTHIPPUS DORSATUS	75
746	1534.7	CHORTHIPPUS PARALLELUS	75
746	1534.7	METRIOPTERA ROESELII	13
746	1534.7	MIRAMELLA ALPINA	3
742	1543.4	CHORTHIPPUS PARALLELUS	35
742	1543.4	DECTICUS VERRUCIVORUS	13
742	1543.4	MIRAMELLA ALPINA	13
742	1543.4	OMOCESTUS VIRIDULUS	13
742	1543.4	STAURODERUS SCALARIS	75
750	1567.2	CHORTHIPPUS PARALLELUS	13
750	1567.2	METRIOPTERA ROESELII	13
750	1567.2	METRIOPTERA SAUSSURIANA	13
750	1567.2	MIRAMELLA ALPINA	35
750	1567.2	OMOCESTUS VIRIDULUS	75
750	1567.2	CHORTHIPPUS DORSATUS	3
750	1567.2	STAURODERUS SCALARIS	3
750	1567.2	STENOBOTHRUS LINEATUS	3
757	1580	CHORTHIPPUS APRICARIUS	35
757	1580	CHORTHIPPUS BIGUTTULUS	13
757	1580	CHORTHIPPUS PARALLELUS	35
757	1580	EUTHYSTIRA BRACHYPTERA	75
757	1580	METRIOPTERA ROESELII	3
757	1580	METRIOPTERA SAUSSURIANA	3
757	1580	PHOLIDOPTERA GRISEOAPTERA	13
757	1580	STAURODERUS SCALARIS	13
757	1580	TETTIGONIA CANTANS	3
754	1580.9	EUTHYSTIRA BRACHYPTERA	3
754	1580.9	METRIOPTERA SAUSSURIANA	3
754	1580.9	OMOCESTUS VIRIDULUS	3
759	1589.2	BARBITISTES SERRICAUDA	3
759	1589.2	CHORTHIPPUS BIGUTTULUS	35
759	1589.2	EUTHYSTIRA BRACHYPTERA	75
759	1589.2	METRIOPTERA SAUSSURIANA	13
759	1589.2	MIRAMELLA ALPINA	35

759	1589.2	PODISMA PEDESTRIS	3
759	1589.2	PSOPHUS STRIDULUS	3
759	1589.2	STAURODERUS SCALARIS	75
759	1589.2	TETRIX BIPUNCTATA BIPUNCTA	3
752	1590.1	CHORTHIPPUS PARALLELUS	13
752	1590.1	EUTHYSTIRA BRACHYPTERA	35
752	1590.1	METRIOPTERA SAUSSURIANA	35
752	1590.1	PODISMA PEDESTRIS	3
752	1590.1	POLYSARCUS DENTICAUDA	3
752	1590.1	PSOPHUS STRIDULUS	13
752	1590.1	STAURODERUS SCALARIS	3
752	1590.1	TETTIGONIA CANTANS	3
752	1590.1	CHORTHIPPUS BIGUTTULUS	3
752	1590.1	MIRAMELLA ALPINA	3
740	1592.7	CHORTHIPPUS PARALLELUS	35
740	1592.7	METRIOPTERA SAUSSURIANA	3
740	1592.7	MIRAMELLA ALPINA	13
740	1592.7	OMOCESTUS VIRIDULUS	35
740	1592.7	STAURODERUS SCALARIS	13
740	1592.7	TETTIGONIA CANTANS	3
749	1604.9	CHORTHIPPUS PARALLELUS	35
749	1604.9	METRIOPTERA ROESELII	3
749	1604.9	METRIOPTERA SAUSSURIANA	13
749	1604.9	MIRAMELLA ALPINA	13
749	1604.9	OMOCESTUS VIRIDULUS	75
749	1604.9	STAURODERUS SCALARIS	35
749	1604.9	CHORTHIPPUS BRUNNEUS	3
749	1604.9	GOMPHOCERIPPUS RUFUS	3
736	1629.1	NA	0
735	1634.8	EUTHYSTIRA BRACHYPTERA	35
735	1634.8	METRIOPTERA SAUSSURIANA	35
735	1634.8	MIRAMELLA ALPINA	75
735	1634.8	POLYSARCUS DENTICAUDA	13
735	1634.8	STAURODERUS SCALARIS	3
735	1634.8	CHORTHIPPUS DORSATUS	3
735	1634.8	CHORTHIPPUS PARALLELUS	35
735	1634.8	OMOCESTUS VIRIDULUS	3
735	1634.8	STENOBOTHRUS LINEATUS	3
765	1640.6	CHORTHIPPUS PARALLELUS	75
765	1640.6	METRIOPTERA SAUSSURIANA	35
765	1640.6	OMOCESTUS VIRIDULUS	75
765	1640.6	STAURODERUS SCALARIS	13
738	1647.7	CHORTHIPPUS PARALLELUS	3
738	1647.7	METRIOPTERA ROESELII	3
738	1647.7	METRIOPTERA SAUSSURIANA	35
738	1647.7	MIRAMELLA ALPINA	13

738	1647.7	OMOCESTUS VIRIDULUS	35
738	1647.7	STAURODERUS SCALARIS	35
730	1649.8	CHORTHIPPUS PARALLELUS	13
730	1649.8	METRIOPTERA ROESELII	3
730	1649.8	OMOCESTUS VIRIDULUS	13
730	1649.8	STAURODERUS SCALARIS	3
745	1664.7	CHORTHIPPUS PARALLELUS	35
745	1664.7	DECTICUS VERRUCIVORUS	3
745	1664.7	GOMPHOCERUS SIBIRICUS	3
745	1664.7	METRIOPTERA SAUSSURIANA	13
745	1664.7	MIRAMELLA ALPINA	35
745	1664.7	OMOCESTUS VIRIDULUS	35
745	1664.7	STAURODERUS SCALARIS	13
745	1664.7	CHORTHIPPUS BIGUTTULUS	35
745	1664.7	CHORTHIPPUS DORSATUS	3
768	1674.7	MIRAMELLA ALPINA	3
737	1678.6	CHORTHIPPUS PARALLELUS	75
737	1678.6	CHRYSOCHRAON DISPAR	3
737	1678.6	EUTHYSTIRA BRACHYPTERA	13
737	1678.6	METRIOPTERA SAUSSURIANA	13
737	1678.6	MIRAMELLA ALPINA	75
737	1678.6	OMOCESTUS VIRIDULUS	35
737	1678.6	POLYSARCUS DENTICAUDA	3
743	1683.4	ARCYPTERA FUSCA	3
743	1683.4	CHORTHIPPUS PARALLELUS	75
743	1683.4	EUTHYSTIRA BRACHYPTERA	13
743	1683.4	METRIOPTERA ROESELII	3
743	1683.4	MIRAMELLA ALPINA	3
743	1683.4	OMOCESTUS VIRIDULUS	3
743	1683.4	POLYSARCUS DENTICAUDA	3
743	1683.4	STAURODERUS SCALARIS	35
743	1683.4	CHORTHIPPUS BIGUTTULUS	3
743	1683.4	CHORTHIPPUS DORSATUS	75
743	1683.4	STENOBOTHRUS LINEATUS	13
743	1683.4	TETTIGONIA CANTANS	3
758	1686.7	ARCYPTERA FUSCA	3
758	1686.7	CHORTHIPPUS BIGUTTULUS	3
758	1686.7	CHORTHIPPUS PARALLELUS	35
758	1686.7	EUTHYSTIRA BRACHYPTERA	75
758	1686.7	METRIOPTERA SAUSSURIANA	13
758	1686.7	MIRAMELLA ALPINA	35
758	1686.7	OMOCESTUS VIRIDULUS	3
758	1686.7	POLYSARCUS DENTICAUDA	13
758	1686.7	PSOPHUS STRIDULUS	3
758	1686.7	STAURODERUS SCALARIS	13
758	1686.7	TETTIGONIA CANTANS	3

753	1697.7	CHORTHIPPUS PARALLELUS	75
753	1697.7	METRIOPTERA SAUSSURIANA	3
753	1697.7	MIRAMELLA ALPINA	13
753	1697.7	OMOCESTUS VIRIDULUS	35
753	1697.7	EUTHYSTIRA BRACHYPTERA	13
731	1698.2	CHORTHIPPUS PARALLELUS	75
731	1698.2	METRIOPTERA SAUSSURIANA	35
731	1698.2	MIRAMELLA ALPINA	75
731	1698.2	OMOCESTUS VIRIDULUS	35
731	1698.2	STETHOPHYMA GROSSUM	75
748	1711.3	ARCYPTERA FUSCA	13
748	1711.3	CHORTHIPPUS BIGUTTULUS	75
748	1711.3	CHORTHIPPUS PARALLELUS	75
748	1711.3	DECTICUS VERRUCIVORUS	3
748	1711.3	EUTHYSTIRA BRACHYPTERA	75
748	1711.3	METRIOPTERA ROESELII	35
748	1711.3	METRIOPTERA SAUSSURIANA	3
748	1711.3	MIRAMELLA ALPINA	13
748	1711.3	OMOCESTUS VIRIDULUS	35
748	1711.3	STAURODERUS SCALARIS	35
748	1711.3	STENOBOTHRUS LINEATUS	13
744	1713.2	CHORTHIPPUS BIGUTTULUS	13
744	1713.2	CHORTHIPPUS PARALLELUS	75
744	1713.2	DECTICUS VERRUCIVORUS	13
744	1713.2	EUTHYSTIRA BRACHYPTERA	13
744	1713.2	METRIOPTERA ROESELII	13
744	1713.2	MIRAMELLA ALPINA	3
744	1713.2	OMOCESTUS VIRIDULUS	35
744	1713.2	STAURODERUS SCALARIS	13
744	1713.2	STENOBOTHRUS LINEATUS	13
744	1713.2	CHORTHIPPUS DORSATUS	13
744	1713.2	METRIOPTERA SAUSSURIANA	13
751	1760.1	CHORTHIPPUS PARALLELUS	35
751	1760.1	EUTHYSTIRA BRACHYPTERA	13
751	1760.1	METRIOPTERA SAUSSURIANA	13
751	1760.1	MIRAMELLA ALPINA	13
751	1760.1	OMOCESTUS VIRIDULUS	35
751	1760.1	POLYSARCUS DENTICAUDA	3
893	1764.7	METRIOPTERA SAUSSURIANA	3
893	1764.7	MIRAMELLA ALPINA	3
787	1767.8	CHORTHIPPUS PARALLELUS	75
787	1767.8	EUTHYSTIRA BRACHYPTERA	35
787	1767.8	METRIOPTERA SAUSSURIANA	13
787	1767.8	OMOCESTUS VIRIDULUS	75
787	1767.8	STAURODERUS SCALARIS	3
787	1767.8	TETRIX BIPUNCTATA BIPUNCTA	3

897	1770	CHORTHIPPUS PARALLELUS	75
897	1770	METRIOPTERA SAUSSURIANA	35
897	1770	MIRAMELLA ALPINA	13
897	1770	OMOCESTUS VIRIDULUS	3
767	1770.9	CHORTHIPPUS PARALLELUS	75
767	1770.9	EUTHYSTIRA BRACHYPTERA	13
767	1770.9	METRIOPTERA SAUSSURIANA	13
767	1770.9	MIRAMELLA ALPINA	3
767	1770.9	OMOCESTUS VIRIDULUS	35
767	1770.9	PODISMA PEDESTRIS	13
767	1770.9	STAURODERUS SCALARIS	3
778	1781.3	CHORTHIPPUS PARALLELUS	13
778	1781.3	EUTHYSTIRA BRACHYPTERA	13
778	1781.3	METRIOPTERA SAUSSURIANA	13
778	1781.3	MIRAMELLA ALPINA	13
778	1781.3	OMOCESTUS VIRIDULUS	3
778	1781.3	POLYSARCUS DENTICAUDA	3
776	1795	MIRAMELLA ALPINA	3
776	1795	OMOCESTUS VIRIDULUS	13
776	1795	CHORTHIPPUS PARALLELUS	13
776	1795	METRIOPTERA SAUSSURIANA	13
804	1812.1	CHORTHIPPUS BIGUTTULUS	35
804	1812.1	CHORTHIPPUS PARALLELUS	75
804	1812.1	EUTHYSTIRA BRACHYPTERA	75
804	1812.1	METRIOPTERA SAUSSURIANA	3
804	1812.1	MIRAMELLA ALPINA	3
804	1812.1	OMOCESTUS VIRIDULUS	75
804	1812.1	PHOLIDOPTERA GRISEOAPTERA	13
804	1812.1	PODISMA PEDESTRIS	3
804	1812.1	STAURODERUS SCALARIS	75
806	1814.3	CHORTHIPPUS PARALLELUS	35
806	1814.3	METRIOPTERA SAUSSURIANA	3
806	1814.3	MIRAMELLA ALPINA	35
806	1814.3	OMOCESTUS VIRIDULUS	13
792	1818.6	CHORTHIPPUS DORSATUS	3
792	1818.6	CHORTHIPPUS PARALLELUS	35
792	1818.6	EUTHYSTIRA BRACHYPTERA	13
792	1818.6	METRIOPTERA ROESELII	3
792	1818.6	METRIOPTERA SAUSSURIANA	3
792	1818.6	MIRAMELLA ALPINA	35
792	1818.6	OMOCESTUS VIRIDULUS	35
792	1818.6	POLYSARCUS DENTICAUDA	3
795	1824.3	METRIOPTERA SAUSSURIANA	3
795	1824.3	MIRAMELLA ALPINA	3
795	1824.3	OMOCESTUS VIRIDULUS	13
795	1824.3	POLYSARCUS DENTICAUDA	3

784	1830.2	CHORTHIPPUS APRICARIUS	3
784	1830.2	CHORTHIPPUS BIGUTTULUS	3
784	1830.2	CHORTHIPPUS PARALLELUS	3
784	1830.2	METRIOPTERA SAUSSURIANA	3
784	1830.2	OMOCESTUS VIRIDULUS	13
784	1830.2	POLYSARCUS DENTICAUDA	3
784	1830.2	MIRAMELLA ALPINA	3
779	1831.5	CHORTHIPPUS PARALLELUS	13
779	1831.5	EUTHYSTIRA BRACHYPTERA	35
779	1831.5	GOMPHOCERUS SIBIRICUS	75
779	1831.5	METRIOPTERA SAUSSURIANA	3
779	1831.5	MIRAMELLA ALPINA	3
779	1831.5	OMOCESTUS VIRIDULUS	75
779	1831.5	STAURODERUS SCALARIS	13
779	1831.5	TETTIGONIA CANTANS	3
772	1834.2	CHORTHIPPUS PARALLELUS	13
772	1834.2	METRIOPTERA SAUSSURIANA	35
772	1834.2	MIRAMELLA ALPINA	35
772	1834.2	OMOCESTUS VIRIDULUS	13
794	1843.8	CHORTHIPPUS PARALLELUS	75
794	1843.8	GOMPHOCERUS SIBIRICUS	35
794	1843.8	METRIOPTERA SAUSSURIANA	35
794	1843.8	MIRAMELLA ALPINA	75
794	1843.8	OMOCESTUS VIRIDULUS	35
794	1843.8	POLYSARCUS DENTICAUDA	3
794	1843.8	STAURODERUS SCALARIS	3
794	1843.8	CHORTHIPPUS BIGUTTULUS	35
794	1843.8	METRIOPTERA ROESELII	3
809	1843.9	ARCYPTERA FUSCA	13
809	1843.9	CHORTHIPPUS BIGUTTULUS	35
809	1843.9	CHORTHIPPUS PARALLELUS	35
809	1843.9	EUTHYSTIRA BRACHYPTERA	75
809	1843.9	GOMPHOCERUS SIBIRICUS	13
809	1843.9	METRIOPTERA SAUSSURIANA	3
809	1843.9	PSOPHUS STRIDULUS	13
809	1843.9	STAURODERUS SCALARIS	13
801	1846.6	CHORTHIPPUS APRICARIUS	35
801	1846.6	CHORTHIPPUS BIGUTTULUS	35
801	1846.6	CHORTHIPPUS PARALLELUS	35
801	1846.6	EUTHYSTIRA BRACHYPTERA	75
801	1846.6	METRIOPTERA SAUSSURIANA	13
801	1846.6	MIRAMELLA ALPINA	3
801	1846.6	OMOCESTUS VIRIDULUS	35
801	1846.6	PSOPHUS STRIDULUS	13
801	1846.6	STAURODERUS SCALARIS	35
801	1846.6	STENOBOTHRUS LINEATUS	35

807	1872	CHORTHIPPUS PARALLELUS	35
807	1872	EUTHYSTIRA BRACHYPTERA	3
807	1872	GOMPHOCERUS SIBIRICUS	35
807	1872	METRIOPTERA SAUSSURIANA	13
807	1872	MIRAMELLA ALPINA	13
783	1873.1	NA	0
895	1877.2	MIRAMELLA ALPINA	3
780	1884.9	CHORTHIPPUS BIGUTTULUS	13
780	1884.9	CHORTHIPPUS PARALLELUS	13
780	1884.9	EUTHYSTIRA BRACHYPTERA	35
780	1884.9	METRIOPTERA SAUSSURIANA	3
780	1884.9	PSOPHUS STRIDULUS	13
780	1884.9	STAURODERUS SCALARIS	13
800	1887.2	CHORTHIPPUS PARALLELUS	13
800	1887.2	EUTHYSTIRA BRACHYPTERA	35
800	1887.2	METRIOPTERA SAUSSURIANA	13
800	1887.2	MIRAMELLA ALPINA	13
800	1887.2	OMOCESTUS VIRIDULUS	3
800	1887.2	POLYSARCUS DENTICAUDA	3
800	1887.2	STAURODERUS SCALARIS	13
782	1888.5	CHORTHIPPUS PARALLELUS	35
782	1888.5	GOMPHOCERUS SIBIRICUS	3
782	1888.5	METRIOPTERA SAUSSURIANA	13
782	1888.5	MIRAMELLA ALPINA	3
782	1888.5	OMOCESTUS VIRIDULUS	13
782	1888.5	PODISMA PEDESTRIS	13
894	1892.7	OMOCESTUS VIRIDULUS	3
769	1905.2	CHORTHIPPUS PARALLELUS	75
769	1905.2	METRIOPTERA SAUSSURIANA	13
769	1905.2	MIRAMELLA ALPINA	35
769	1905.2	OMOCESTUS VIRIDULUS	13
769	1905.2	STAURODERUS SCALARIS	3
789	1919.7	METRIOPTERA SAUSSURIANA	3
789	1919.7	MIRAMELLA ALPINA	13
805	1928.1	ARCYPTERA FUSCA	13
805	1928.1	CHORTHIPPUS BIGUTTULUS	35
805	1928.1	CHORTHIPPUS PARALLELUS	75
805	1928.1	DECTICUS VERRUCIVORUS	13
805	1928.1	EUTHYSTIRA BRACHYPTERA	75
805	1928.1	METRIOPTERA SAUSSURIANA	13
805	1928.1	MIRAMELLA ALPINA	3
805	1928.1	OMOCESTUS VIRIDULUS	3
805	1928.1	POLYSARCUS DENTICAUDA	3
805	1928.1	PSOPHUS STRIDULUS	13
805	1928.1	STAURODERUS SCALARIS	75
805	1928.1	STENOBOTHRUS LINEATUS	13

805	1928.1	TETRIX BIPUNCTATA BIPUNCTA	3
790	1936.7	ANONCONOTUS ALPINUS	3
790	1936.7	CHORTHIPPUS PARALLELUS	75
790	1936.7	DECTICUS VERRUCIVORUS	35
790	1936.7	EUTHYSTIRA BRACHYPTERA	35
790	1936.7	GOMPHOCERUS SIBIRICUS	13
790	1936.7	METRIOPTERA SAUSSURIANA	13
790	1936.7	MIRAMELLA ALPINA	13
790	1936.7	OMOCESTUS VIRIDULUS	35
790	1936.7	PODISMA PEDESTRIS	13
790	1936.7	STAURODERUS SCALARIS	35
775	1937.3	OMOCESTUS VIRIDULUS	3
803	1938.1	CHORTHIPPUS BIGUTTULUS	3
803	1938.1	CHORTHIPPUS PARALLELUS	35
803	1938.1	EUTHYSTIRA BRACHYPTERA	35
803	1938.1	GOMPHOCERUS SIBIRICUS	13
803	1938.1	METRIOPTERA ROESELII	13
803	1938.1	METRIOPTERA SAUSSURIANA	13
803	1938.1	MIRAMELLA ALPINA	35
803	1938.1	OMOCESTUS VIRIDULUS	35
803	1938.1	POLYSARCUS DENTICAUDA	3
777	1941.5	CHORTHIPPUS PARALLELUS	35
777	1941.5	METRIOPTERA SAUSSURIANA	13
777	1941.5	MIRAMELLA ALPINA	35
777	1941.5	OMOCESTUS VIRIDULUS	35
896	1945.4	CHORTHIPPUS PARALLELUS	13
896	1945.4	METRIOPTERA SAUSSURIANA	3
896	1945.4	MIRAMELLA ALPINA	3
896	1945.4	PODISMA PEDESTRIS	3
791	1953.4	CHORTHIPPUS PARALLELUS	75
791	1953.4	EUTHYSTIRA BRACHYPTERA	3
791	1953.4	GOMPHOCERUS SIBIRICUS	35
791	1953.4	METRIOPTERA SAUSSURIANA	13
791	1953.4	MIRAMELLA ALPINA	35
791	1953.4	OMOCESTUS VIRIDULUS	75
791	1953.4	POLYSARCUS DENTICAUDA	3
791	1953.4	STAURODERUS SCALARIS	3
770	1954.1	CHORTHIPPUS PARALLELUS	75
770	1954.1	METRIOPTERA SAUSSURIANA	13
770	1954.1	MIRAMELLA ALPINA	3
770	1954.1	OMOCESTUS VIRIDULUS	13
770	1954.1	POLYSARCUS DENTICAUDA	35
843	1972.6	CHORTHIPPUS APRICARIUS	75
843	1972.6	CHORTHIPPUS BIGUTTULUS	13
843	1972.6	CHORTHIPPUS PARALLELUS	3
843	1972.6	EUTHYSTIRA BRACHYPTERA	35

843	1972.6	METRIOPTERA SAUSSURIANA	13
843	1972.6	MIRAMELLA ALPINA	13
843	1972.6	POLYSARCUS DENTICAUDA	3
846	1983.5	METRIOPTERA SAUSSURIANA	3
846	1983.5	MIRAMELLA ALPINA	13
846	1983.5	OMOCESTUS VIRIDULUS	3
797	1988.8	CHORTHIPPUS PARALLELUS	35
797	1988.8	METRIOPTERA SAUSSURIANA	35
797	1988.8	MIRAMELLA ALPINA	13
797	1988.8	PODISMA PEDESTRIS	3
821	2005.1	CHORTHIPPUS PARALLELUS	35
821	2005.1	METRIOPTERA SAUSSURIANA	3
821	2005.1	MIRAMELLA ALPINA	3
821	2005.1	OMOCESTUS VIRIDULUS	35
828	2011.9	CHORTHIPPUS BIGUTTULUS	13
828	2011.9	CHORTHIPPUS PARALLELUS	75
828	2011.9	METRIOPTERA SAUSSURIANA	13
828	2011.9	MIRAMELLA ALPINA	13
828	2011.9	OMOCESTUS VIRIDULUS	35
828	2011.9	PODISMA PEDESTRIS	3
828	2011.9	STAURODERUS SCALARIS	35
837	2015.8	METRIOPTERA SAUSSURIANA	3
837	2015.8	MIRAMELLA ALPINA	13
837	2015.8	OMOCESTUS VIRIDULUS	3
837	2015.8	POLYSARCUS DENTICAUDA	3
820	2015.9	CHORTHIPPUS PARALLELUS	35
820	2015.9	METRIOPTERA SAUSSURIANA	13
820	2015.9	MIRAMELLA ALPINA	35
820	2015.9	PODISMA PEDESTRIS	3
814	2016.2	EUTHYSTIRA BRACHYPTERA	3
814	2016.2	MIRAMELLA ALPINA	3
814	2016.2	OMOCESTUS VIRIDULUS	13
814	2016.2	PODISMA PEDESTRIS	13
813	2021	METRIOPTERA SAUSSURIANA	3
813	2021	MIRAMELLA ALPINA	13
830	2024.5	CHORTHIPPUS PARALLELUS	35
830	2024.5	METRIOPTERA SAUSSURIANA	13
830	2024.5	MIRAMELLA ALPINA	13
817	2035.3	METRIOPTERA ROESELII	3
817	2035.3	METRIOPTERA SAUSSURIANA	13
817	2035.3	MIRAMELLA ALPINA	13
817	2035.3	POLYSARCUS DENTICAUDA	3
902	2039.5	CHORTHIPPUS PARALLELUS	75
902	2039.5	METRIOPTERA SAUSSURIANA	35
902	2039.5	MIRAMELLA ALPINA	13
902	2039.5	PODISMA PEDESTRIS	3

838	2046.6	CHORTHIPPUS PARALLELUS	13
838	2046.6	EUTHYSTIRA BRACHYPTERA	35
838	2046.6	METRIOPTERA SAUSSURIANA	13
838	2046.6	MIRAMELLA ALPINA	13
838	2046.6	PODISMA PEDESTRIS	3
825	2053.7	CHORTHIPPUS PARALLELUS	75
825	2053.7	EUTHYSTIRA BRACHYPTERA	75
825	2053.7	METRIOPTERA SAUSSURIANA	3
825	2053.7	MIRAMELLA ALPINA	75
825	2053.7	OMOCESTUS VIRIDULUS	75
825	2053.7	POLYSARCUS DENTICAUDA	3
825	2053.7	STAURODERUS SCALARIS	13
822	2055.2	CHORTHIPPUS APRICARIUS	13
822	2055.2	CHORTHIPPUS BIGUTTULUS	13
822	2055.2	CHORTHIPPUS PARALLELUS	35
822	2055.2	METRIOPTERA SAUSSURIANA	13
822	2055.2	OMOCESTUS VIRIDULUS	3
822	2055.2	POLYSARCUS DENTICAUDA	3
822	2055.2	STAURODERUS SCALARIS	13
818	2063.6	NA	0
812	2067.3	CHORTHIPPUS BIGUTTULUS	13
812	2067.3	CHORTHIPPUS PARALLELUS	13
812	2067.3	OMOCESTUS VIRIDULUS	13
812	2067.3	PODISMA PEDESTRIS	13
827	2080.6	CHORTHIPPUS PARALLELUS	35
827	2080.6	METRIOPTERA SAUSSURIANA	13
827	2080.6	MIRAMELLA ALPINA	3
845	2090.1	CHORTHIPPUS PARALLELUS	35
845	2090.1	EUTHYSTIRA BRACHYPTERA	3
845	2090.1	METRIOPTERA SAUSSURIANA	13
845	2090.1	MIRAMELLA ALPINA	3
845	2090.1	STAURODERUS SCALARIS	13
900	2100.8	CHORTHIPPUS BIGUTTULUS	3
900	2100.8	CHORTHIPPUS PARALLELUS	3
900	2100.8	EUTHYSTIRA BRACHYPTERA	13
900	2100.8	GOMPHOCERUS SIBIRICUS	13
900	2100.8	MIRAMELLA ALPINA	3
900	2100.8	OMOCESTUS VIRIDULUS	3
901	2109.8	ANONCONOTUS ALPINUS	3
901	2109.8	CHORTHIPPUS PARALLELUS	13
901	2109.8	METRIOPTERA SAUSSURIANA	13
901	2109.8	MIRAMELLA ALPINA	13
901	2109.8	OMOCESTUS VIRIDULUS	13
901	2109.8	PODISMA PEDESTRIS	13
901	2109.8	STAURODERUS SCALARIS	3
833	2117.6	ANONCONOTUS ALPINUS	3

833	2117.6	CHORTHIPPUS PARALLELUS	13
833	2117.6	DECTICUS VERRUCIVORUS	13
833	2117.6	EUTHYSTIRA BRACHYPTERA	35
833	2117.6	GOMPHOCERUS SIBIRICUS	3
833	2117.6	METRIOPTERA SAUSSURIANA	35
833	2117.6	MIRAMELLA ALPINA	35
833	2117.6	PODISMA PEDESTRIS	13
833	2117.6	STAURODERUS SCALARIS	13
831	2130.6	CHORTHIPPUS APRICARIUS	3
831	2130.6	CHORTHIPPUS PARALLELUS	3
831	2130.6	EUTHYSTIRA BRACHYPTERA	3
831	2130.6	METRIOPTERA SAUSSURIANA	3
831	2130.6	MIRAMELLA ALPINA	13
831	2130.6	STAURODERUS SCALARIS	3
831	2130.6	CHORTHIPPUS BIGUTTULUS	3
831	2130.6	OMOCESTUS VIRIDULUS	3
841	2136.1	CHORTHIPPUS PARALLELUS	35
841	2136.1	MIRAMELLA ALPINA	13
841	2136.1	POLYSARCUS DENTICAUDA	13
811	2137.6	NA	0
898	2146.5	CHORTHIPPUS PARALLELUS	13
898	2146.5	EUTHYSTIRA BRACHYPTERA	13
898	2146.5	METRIOPTERA SAUSSURIANA	3
898	2146.5	MIRAMELLA ALPINA	13
898	2146.5	PODISMA PEDESTRIS	3
898	2146.5	POLYSARCUS DENTICAUDA	3
810	2170.5	EUTHYSTIRA BRACHYPTERA	13
810	2170.5	GOMPHOCERIPPUS RUFUS	3
810	2170.5	GOMPHOCERUS SIBIRICUS	35
810	2170.5	METRIOPTERA SAUSSURIANA	3
810	2170.5	STAURODERUS SCALARIS	35
826	2176	CHORTHIPPUS PARALLELUS	75
826	2176	PODISMA PEDESTRIS	3
826	2176	STAURODERUS SCALARIS	13
899	2184.2	CHORTHIPPUS BIGUTTULUS	3
899	2184.2	MIRAMELLA ALPINA	3
899	2184.2	OMOCESTUS VIRIDULUS	3
899	2184.2	STENOBOTHRUS LINEATUS	3
824	2226.1	CHORTHIPPUS PARALLELUS	13
824	2226.1	PODISMA PEDESTRIS	13
832	2227.8	CHORTHIPPUS PARALLELUS	3
842	2242.8	ARCYPTERA FUSCA	3
842	2242.8	CHORTHIPPUS PARALLELUS	75
842	2242.8	EUTHYSTIRA BRACHYPTERA	35
842	2242.8	METRIOPTERA SAUSSURIANA	3
842	2242.8	MIRAMELLA ALPINA	35

842	2242.8	POLYSARCUS DENTICAUDA	13
842	2242.8	STAURODERUS SCALARIS	13
906	2255	MIRAMELLA ALPINA	3
906	2255	OMOCESTUS VIRIDULUS	3
905	2255.8	ANONCONOTUS ALPINUS	13
905	2255.8	CHORTHIPPUS PARALLELUS	75
905	2255.8	METRIOPTERA SAUSSURIANA	13
905	2255.8	MIRAMELLA ALPINA	13
853	2257	NA	0
904	2259.4	CHORTHIPPUS PARALLELUS	13
904	2259.4	MIRAMELLA ALPINA	13
857	2261.4	NA	0
850	2275.5	NA	0
844	2282.9	CHORTHIPPUS PARALLELUS	35
844	2282.9	MIRAMELLA ALPINA	13
877	2283.8	NA	0
856	2291.4	EUTHYSTIRA BRACHYPTERA	3
856	2291.4	GOMPHOCERUS SIBIRICUS	75
856	2291.4	OMOCESTUS VIRIDULUS	3
862	2293.1	CHORTHIPPUS BIGUTTULUS	3
862	2293.1	EUTHYSTIRA BRACHYPTERA	3
862	2293.1	STENOBOTHRUS LINEATUS	3
860	2310.2	GOMPHOCERUS SIBIRICUS	3
860	2310.2	METRIOPTERA SAUSSURIANA	3
860	2310.2	MIRAMELLA ALPINA	13
852	2322	NA	0
861	2331.7	CHORTHIPPUS PARALLELUS	75
861	2331.7	METRIOPTERA ROESELII	3
861	2331.7	MIRAMELLA ALPINA	35
861	2331.7	OMOCESTUS VIRIDULUS	13
861	2331.7	STAURODERUS SCALARIS	3
869	2339.7	CHORTHIPPUS PARALLELUS	3
847	2342.1	NA	0
849	2355.2	NA	0
848	2373.1	CHORTHIPPUS BIGUTTULUS	13
848	2373.1	EUTHYSTIRA BRACHYPTERA	3
848	2373.1	GOMPHOCERUS SIBIRICUS	3
848	2373.1	MIRAMELLA ALPINA	13
854	2383.8	NA	0
855	2404.8	CHORTHIPPUS PARALLELUS	35
859	2437.1	NA	0
887	2443.2	NA	0
858	2487.2	NA	0
870	2492.2	NA	0
884	2515.5	NA	0
868	2524	NA	0

873	2535.4	NA	0
871	2588.9	NA	0
867	2601.5	OMOCESTUS VIRIDULUS	3
909	2632.4	NA	0
866	2662.4	NA	0
879	2679.1	NA	0
880	2689.7	NA	0
912	2796.4	NA	0
878	2804.1	NA	0
911	2836.8	NA	0
886	3041.6	NA	0

Table S2 *Results of PGLS models at the species level.*

Table S2. Relationships between plant palatability and four predictor variables at the plant species level (n=129) estimated from phylogenetic least squares model (PGLS) including all predictor variables, and when using either quantile 5% or 95% of species elevation as predictor instead of species mean elevation. The PGLS allows correcting for non-independence of the observations due to phylogenetic relationships. The table shows the coefficient of determination (R^2), the t-value and the standardized regression coefficients (Estimate). SLA (specific leaf area); LDMC (leaf dry matter content); C:N (carbon-to-nitrogen content); ELEV q5 (quantile 5% of species elevation); ELEV q95 (quantile 95% of species elevation). *P < 0.05, **P < 0.01, ***P < 0.001.

Species level

	PGLS				PGLS		
	Estimate	t-value			Estimate	t-value	
SLA	0.004	0.032	ns	SLA	0.033	0.293	ns
LDMC	-0.087	-0.679	ns	LDMC	-0.083	-0.641	ns
C:N	-0.259	-2.566	*	C:N	-0.252	-2.493	*
ELEV q5	-0.080	-0.848	ns	ELEV q95	-0.013	-0.134	ns
R^2	0.056	*		R^2	0.049	*	
lamda	0.420			lamda	0.399		

Table S3 *Results of OLS models at the community level.*

Table S3. Relationships between community weighted mean (CWM) of plant palatability and four predictor variables at the plant community level estimated from ordinary least squares multiple regressions (OLS) and bivariate linear regressions, when considering only plots whose cover was composed with more than 80% (n = 167) or 90% (n = 72) of species for which species trait measurement were available. SLA was not considered in the OLS model since it was highly correlated to the other predictors. The table shows the coefficient of determination (R^2), the t-value and the standardized regression coefficients (Estimate). SLA (specific leaf area); LDMC (leaf dry matter content); C:N (carbon-to-nitrogen content); ELEV (mean elevation). *P < 0.05, **P < 0.01, ***P < 0.001.

Community level						
OLS - 80%				OLS - 90%		
	Estimate	t-value			Estimate	t-value
SLA				SLA		
LDMC	-0.484	-5.398 ***		LDMC	-0.482	-3.797 ***
C:N	0.064	0.715 ns		C:N	0.090	0.683 ns
ELEV	0.345	5.422 ***		ELEV	0.362	3.543 ***
R^2	0.337 ***			R^2	0.352 ***	