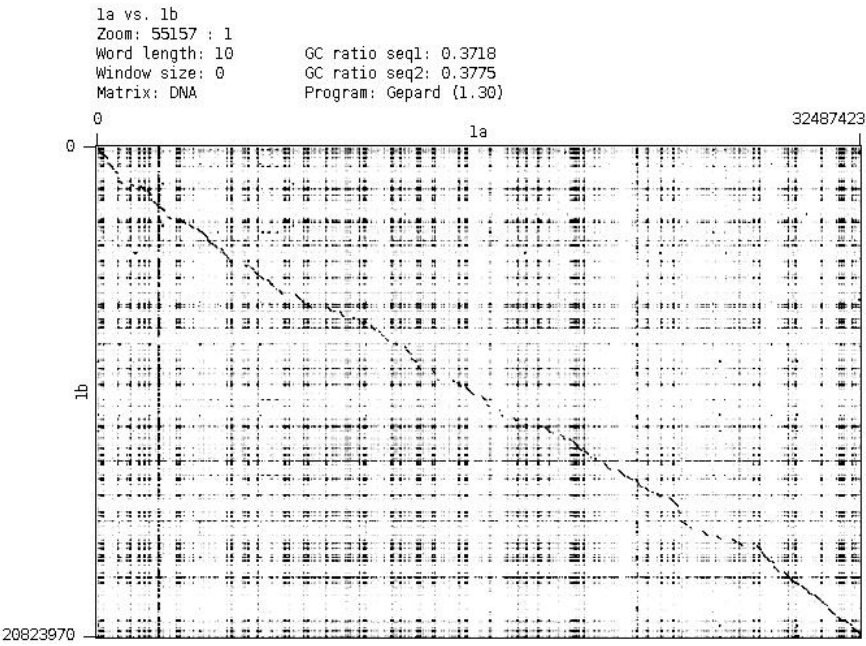
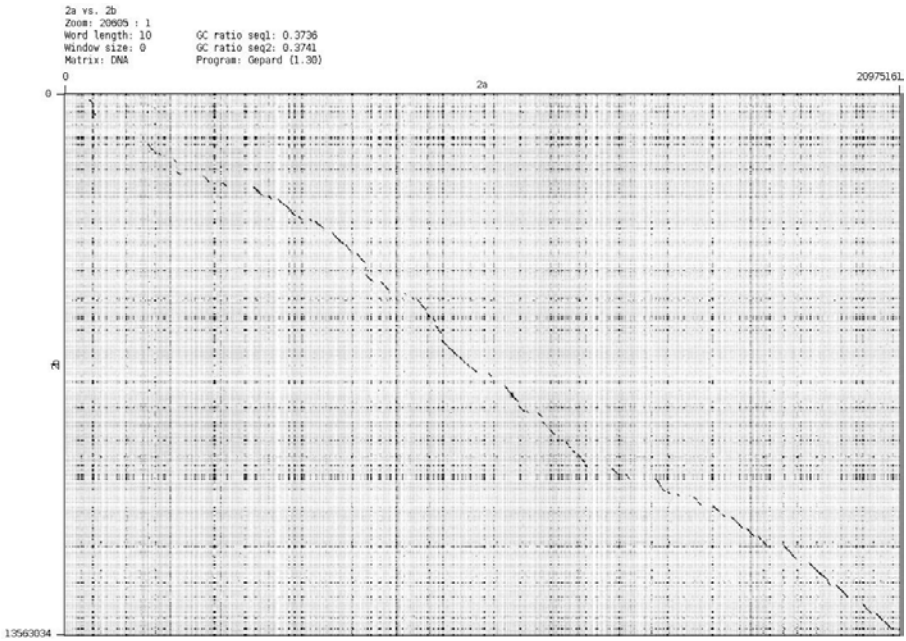


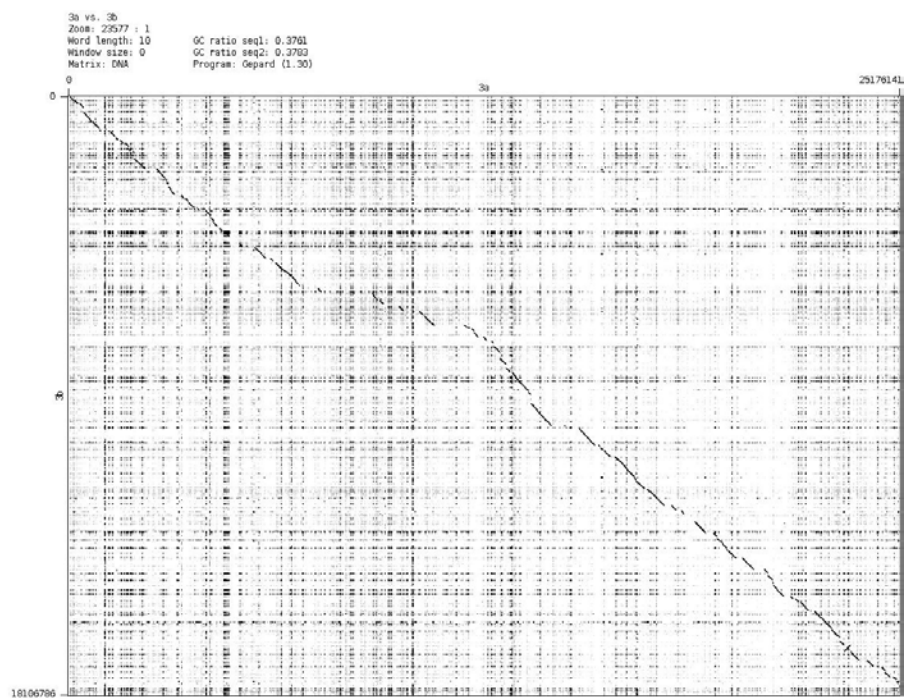
Chromosome 1



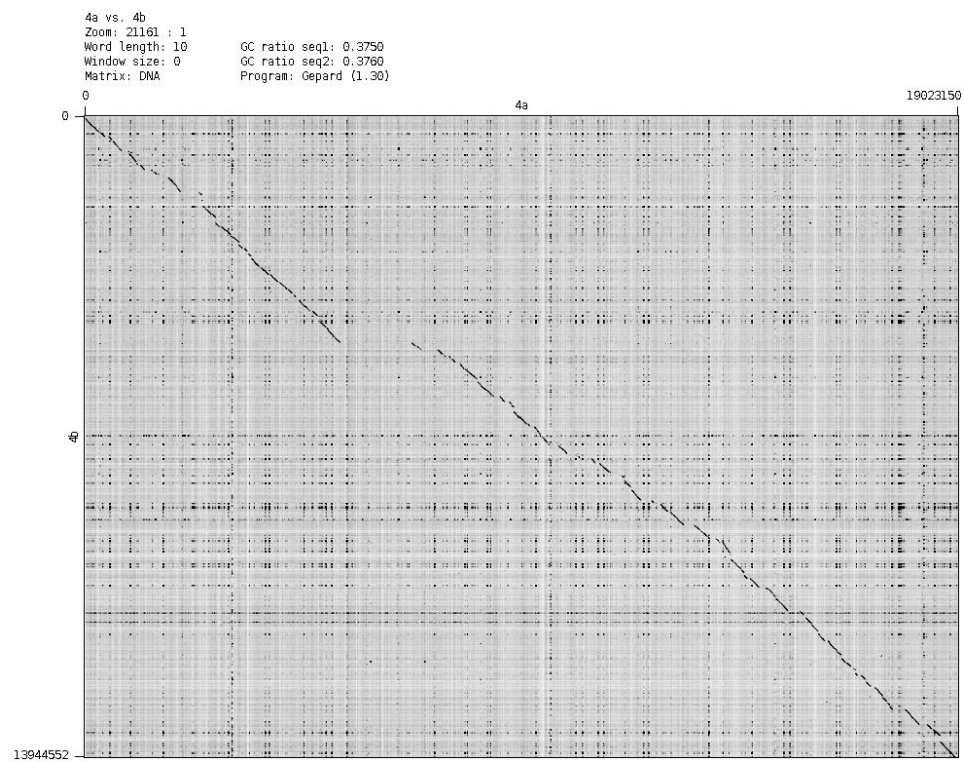
Chromosome 2



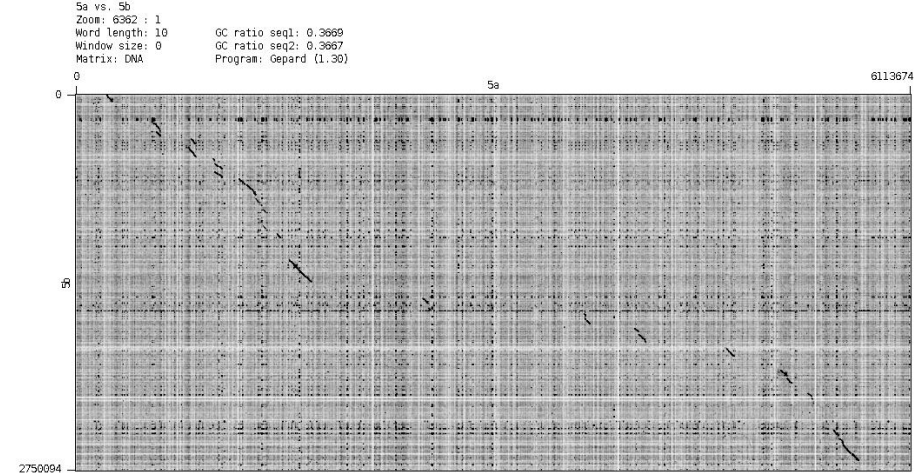
Chromosome 3



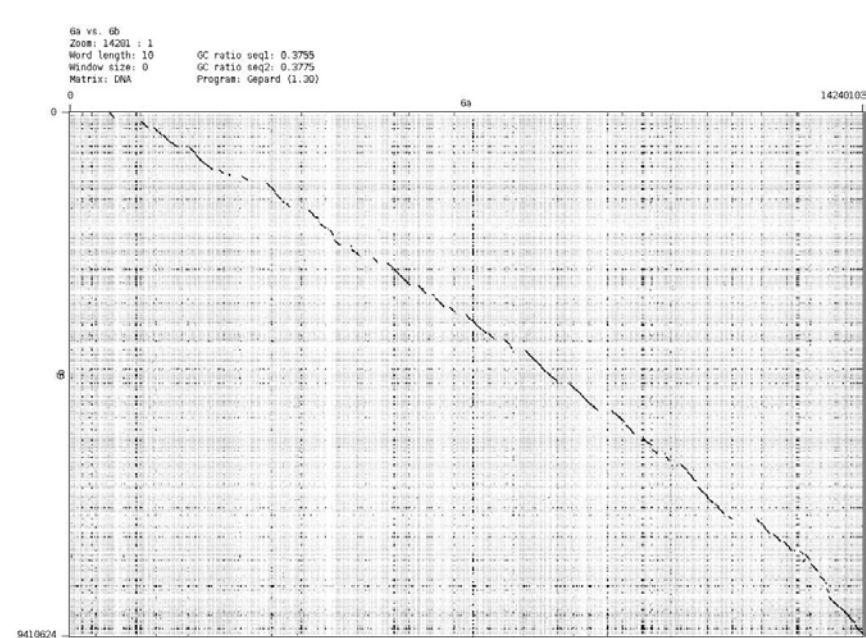
Chromosome 4



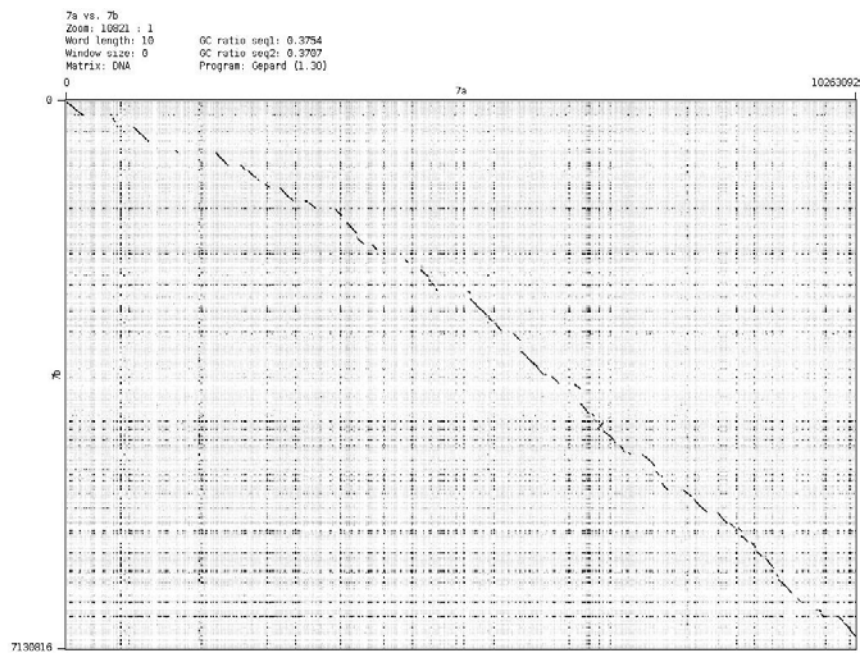
Chromosome 5



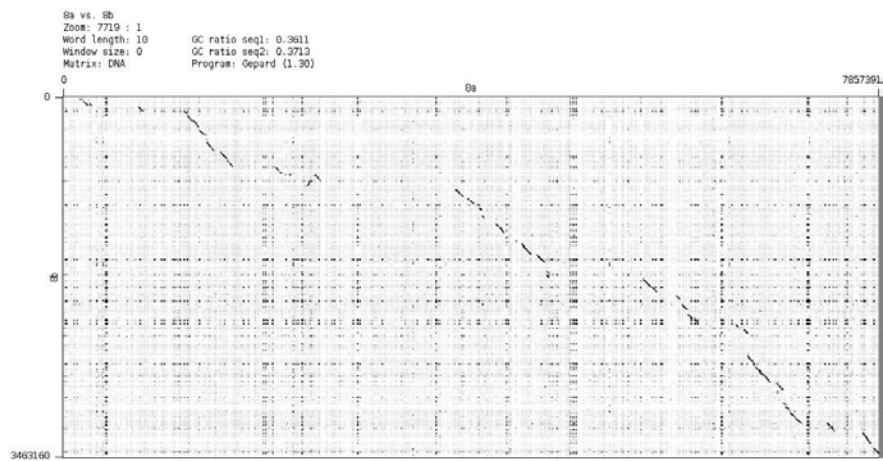
Chromosome 6



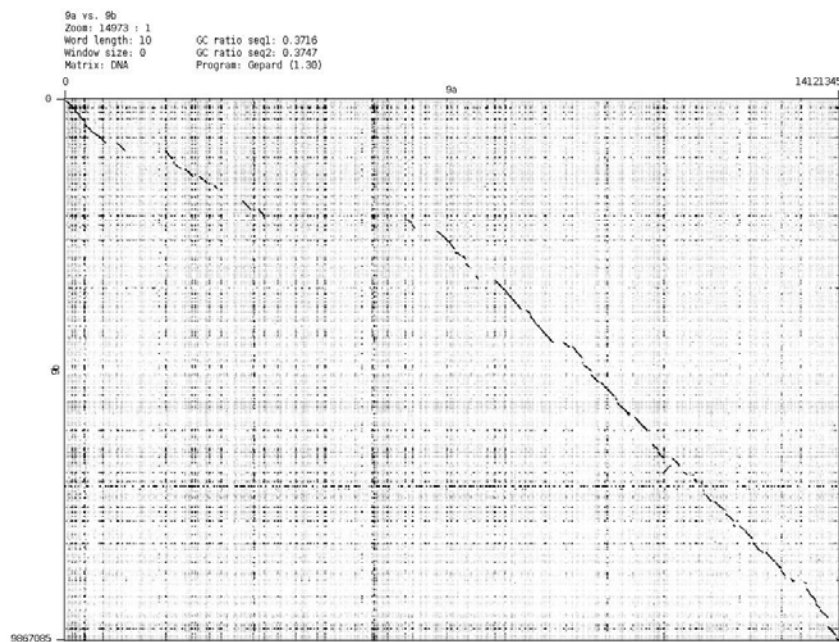
Chromosome 7



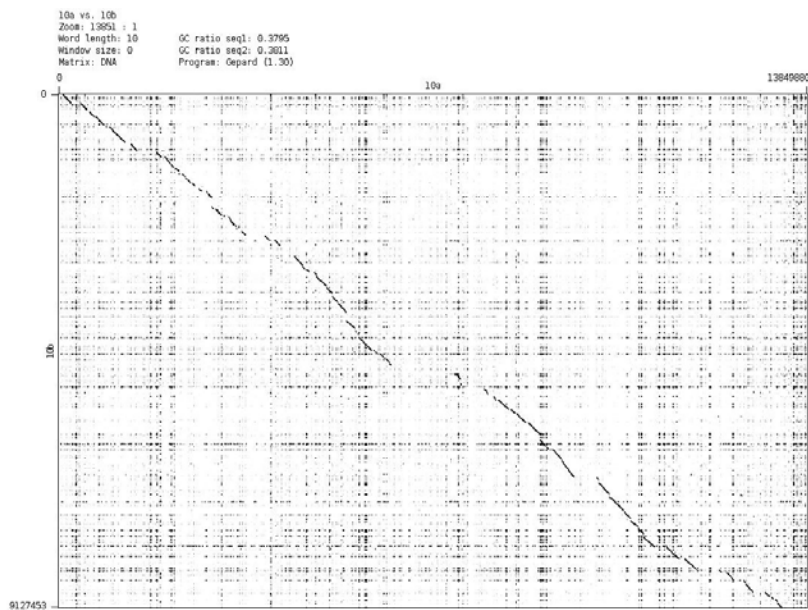
Chromosome 8



Chromosome 9



Chromosome 10



Supplementary Figure S2. Alignment of A and B genomes. Scaffolds were ordered by mapping to sorghum to individual sorghum chromosomes and were then sorted into an A and a B genome by to avoid overlap. A dotplot shows the correspondence between the A and B genomes.