

Supporting information

Impact of composite structure and morphology on electronic and ionic conductivity of carbon contained LiCoO₂ cathode

Nam Hee Kwon^{1*}, Hui Yin¹, Pierre Brodard², Claudia Sugnaux¹ and Katharina M. Fromm¹

1 University of Fribourg, Department of Chemistry, Chemin du Musée 9, CH-1700 Fribourg, Switzerland

2 University of Applied Sciences of Western Switzerland, College of Engineering and Architecture of Fribourg, Boulevard de Pérolles 80, CH-1705 Fribourg, Switzerland

Corresponding author:

Dr. Nam Hee Kwon,

University of Fribourg

Department of Chemistry

Chemin du Musée 9

CH-1700 Fribourg

Switzerland

Tel : +41 26 300 87 35

Fax : +41 26 300 97 38

E-mail : namhee.kwon@unifr.ch

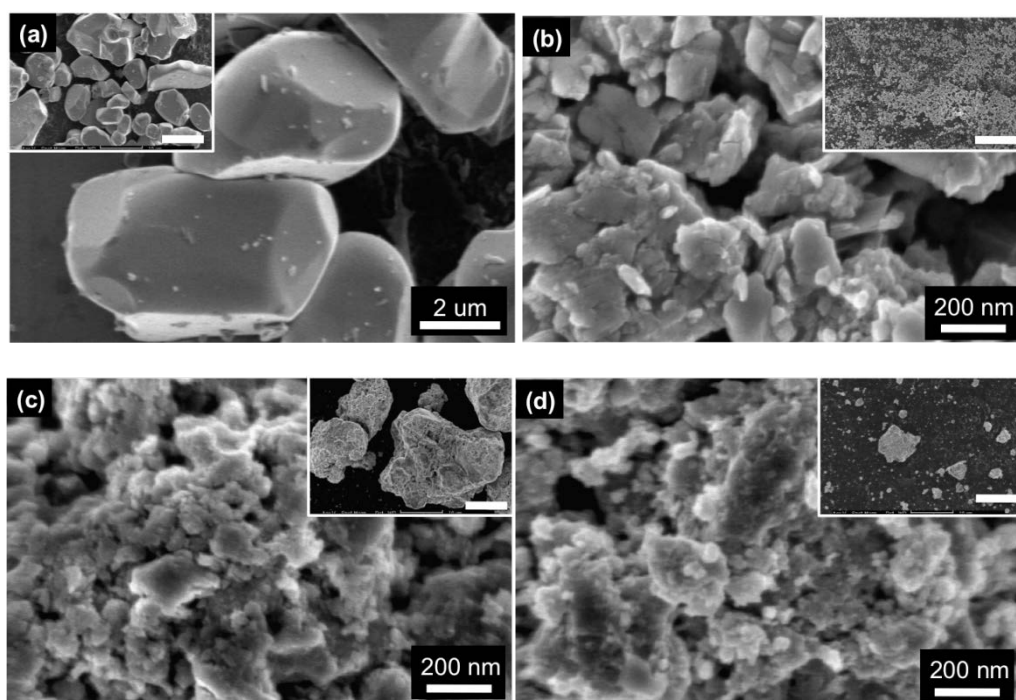


Fig. S1. The images of scanning electron microscopy of LiCoO₂ material before (a) and after ball-milling for 5 (b), 30 (c) and 60 min (d). The inset images have all the same scale bar of 10 μm.

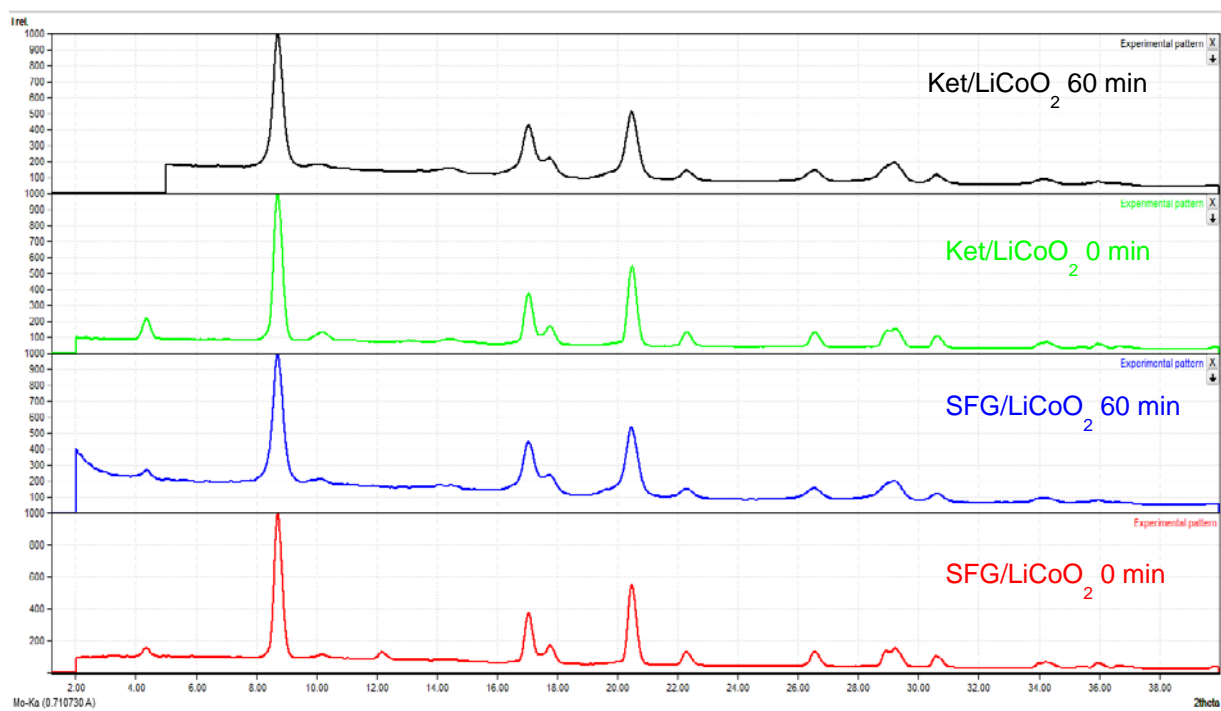


Fig. S2. XRD patterns of the SFG/LiCoO₂ and Ket/LiCoO₂ composites before and after ball-milling.