

Effect of a Marginal Inclination on Pattern Formation in a Binary Liquid Mixture under Thermal Stress

Fabrizio Croccolo,^{1,2,*} Frank Scheffold,¹ and Alberto Vailati³

¹*Department of Physics, University of Fribourg, CH-1700 Fribourg, Switzerland*

²*Laboratoire des Fluides Complexes et leurs Réservoirs-CNRS UMR5150,
Université de Pau et des Pays de l'Adour, F-64600 Anglet, France*

³*Dipartimento di Fisica, Università degli Studi di Milano, I-20133 Milano, Italy*

Convective motions in a fluid layer are affected by its orientation with respect to the gravitational field. We investigate the long-term stability of a thermally stressed layer of a binary liquid mixture and show that pattern formation is strongly affected by marginal inclinations as small as a few milliradians. At small Rayleigh numbers, the mass transfer is dominated by the induced large scale shear flow, while at larger Rayleigh numbers, it is dominated by solutal convection. At the transition, the balance between the solutal and shear flows gives rise to drifting columnar flows moving in opposite directions along parallel lanes in a superhighway configuration.

Pattern formation in nonequilibrium systems arises from symmetry breaking of an isotropic initial state [1]. Whenever two symmetry-breaking mechanisms coexist, their competition gives rise to a rich phase diagram. A typical example is represented by an inclined layer of liquid under the action of a temperature difference. Tilting the layer can determine a large scale shear flow (LSF). For fairly large inclinations, theoretical [2–4] and experimental studies [5–9] reveal rich spatiotemporal dynamics in the phase diagram, characterized by the presence of Busse oscillations, subharmonic oscillations as well as longitudinal and cross rolls. The transitions between different regimes occur at angles of the order of tens of degrees, and pattern formation does not appear to be influenced by small inclination angles of the order of a few degrees or smaller. By adding a second component to the mixture, the compositional stratification also contributes to the convective behavior. A remarkable example is represented by thermohaline circulation in oceans, where both the local salinity and temperature of water contribute to the convective motions, the thickness of the layer of water being modulated by the seafloor [10,11]. The thermal stress applied to a liquid mixture via a temperature gradient can be quantified by the dimensionless Rayleigh number $Ra = g\Delta\rho_T h^3/(\eta D_T)$ [12], where g is the gravity acceleration, $\Delta\rho_T$ the density difference generated by thermal dilation of the liquid, h the liquid layer thickness, η its shear viscosity, and D_T the thermal diffusivity. The presence of the thermal stress determines a separating flux of the two components and, in turn, a solutal density difference $\Delta\rho_c$ throughout the sample, whose value and orientation are quantified by the Soret coefficient S_T [13,14]. In the case of a mixture with positive S_T , as the one used in our study, both $\Delta\rho_T$ and $\Delta\rho_c$ contribute to destabilize a sample heated from below. The relative importance of the

two contributions is expressed by the separation ratio $\psi = \Delta\rho_c/\Delta\rho_T$. The concentration difference $\Delta\rho_c$ determines a solutal stress on the mixture expressed by the solutal Rayleigh number $Ra_s = Ra\psi/Le$, where $Le = D/D_T$ is the Lewis number of the mixture and D its diffusion coefficient [15,16]. At Rayleigh numbers smaller than the threshold $Ra_c \approx 1700$ for Rayleigh-Bénard convection, the long persistence time of concentration perturbations can give rise to sustained solutal convective motions even in the presence of small $\Delta\rho_c$.

In this Letter, we investigate the influence of a small inclination angle in the range $0 \text{ mrad} < \alpha < 36 \text{ mrad}$ ($\alpha < 2^\circ$) on the long-term convective behavior of a layer of a binary liquid mixture under thermal stress below the threshold for Rayleigh-Bénard convection. Interestingly, we find the long-term stability of the mixture to be strongly influenced already by small inclination angles, in contrast to the short-term behavior which remains unaffected. The observed convective patterns are arranged into a peculiar superhighway configuration, reminiscent of the traffic of vehicles during rush hours. Such a pattern differs dramatically from the square, roll, and cross-roll patterns previously reported experimentally [17,18] and theoretically [19,20] for binary liquid mixtures heated from below in the absence of inclination.

The binary mixture selected for this study is isobutylbenzene/*n*-dodecane at 50% weight fraction. The choice of this mixture is motivated by the availability of an accurate and extensive set of thermophysical properties [21]. The sample is delimited by two $8 \times 40 \times 40 \text{ mm}^3$ square sapphire windows kept at fixed distance and sealed by a circular Viton *O*-ring gasket with an inner radius $R = 13 \text{ mm}$. The geometry corresponds to a moderately high aspect ratio $R/h = 10$ of the sample. The sapphire windows are in contact with two annular

thermoelectric devices connected to two independent proportional-integral-derivative temperature controllers. The temperature of each sapphire window can be controlled independently with an absolute accuracy of 0.01 K and a relative rms stability of 0.001 K over 24 hours. The Peltier elements have a central hole with radius of $r = 6.5$ mm that determines a clear aperture suitable to perform optical measurements. The performances and reliability of the cell have been established during a long series of experiments on devices sharing a similar conceptual design (see [23–25] and references therein). Calibration measurements performed with water in strictly noninclined conditions showed $Ra_c = 1670 \pm 50$. Finite element modeling has been performed to evaluate the cell radial inhomogeneities of the temperature profile. We find the inhomogeneities to be smaller than 2% of the vertical gradient, comparable to the results previously reported [23]. The uniformity of the cell thickness is better than 0.01 mm over the entire field of view.

A $h = 1.30$ mm thick layer of the mixture is hosted inside the thermal gradient cell that can be tilted by using a calibrated screw. We performed careful control measurements at zero tilt angle, lasting as long as one month. These measurements allowed us to exclude the presence of a large scale flow when the cell is kept horizontal (see Supplemental Material [26]). As a result of these measurements, we conservatively estimate that the accuracy of the tilt angle is better than 2 mrad. The diagnostic method of choice is shadowgraph, a visualization technique widely employed in fluid dynamics [27–29]. Its implementation comprises a superluminous diode (Superlum, Broad Lighter S680) with a wavelength of $\lambda = (683 \pm 9)$ nm, coupled to a single mode optical fiber as a light source. The diverging beam out of the fiber is collimated by using an achromatic doublet lens of focal length $f = 150$ mm positioned at a focal distance from the lens. No other lens is used after the sample cell. A charged coupled device sensor (Vosskühler, CCD4000) with a resolution of 2048×2048 pixels of $7.4 \times 7.4 \mu\text{m}^2$ is placed at a distance of $z = (260 \pm 10)$ mm from the sample cell [25].

A typical measurement sequence involves the rapid imposition of a temperature difference by heating from below. As a result, a nearly linear temperature profile is established across the sample in a time $\tau_T = h^2/D_T \cong 20$ s. During the process, we grab continuously shadowgraph images of the convective patterns. The frame rate is set to 1 Hz during the initial fast kinetics and reduced to 1/60 Hz for the subsequent slower phase. A sampling from a typical image sequence corresponding to an inclination of 24 mrad and to a Rayleigh number $Ra = 1320$ ($\Delta T = 8.5$ K) is shown in Fig. 1 (see also movie S1 in Supplemental Material [26]). A reference background image is taken before applying the temperature gradient to the fluid mixture [Fig. 1(a)]. This image is then subtracted to all the images subsequently collected at generic

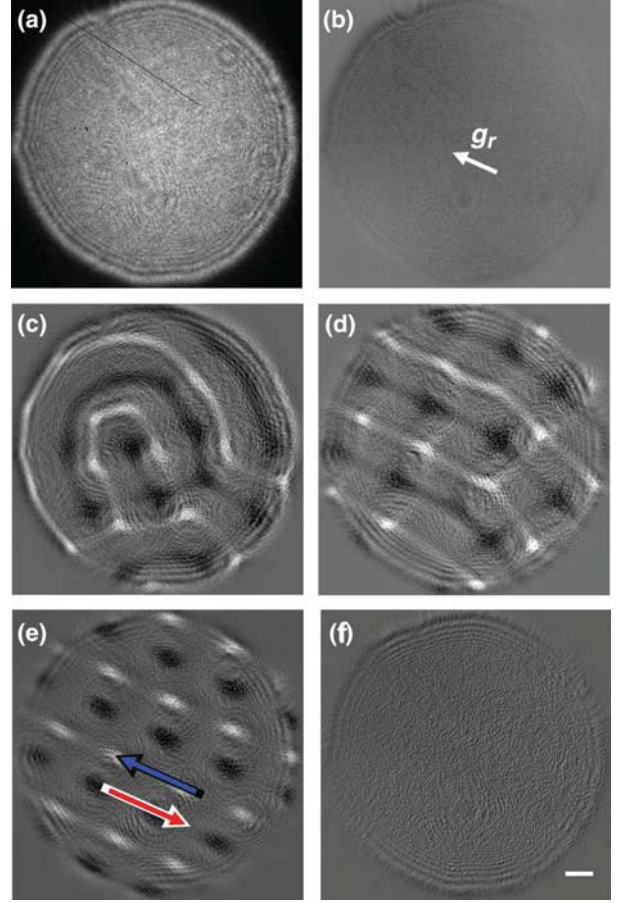


FIG. 1 (color online). Shadowgraph images of the convective patterns: $Ra = 1320$, $\alpha = 24$ mrad (a) Reference image taken at $t = 0$ s. (b)–(f) Difference images; dark zones denote the warmer fluid, which is less concentrated in the denser isobutylbenzene component. Different times shown are: (b) 150 s, (c) 400 s, (d) 4000 s, (e) 20500 s, and (f) 29000 s. The direction of the marginal gravitational acceleration parallel to the cell plane is indicated by an arrow in (b). The directions of motion of the lines for the superhighway convection are indicated by arrows in (e). The size bar in (f) corresponds to the sample thickness $h = 1.3$ mm.

time t . The imposition of the temperature difference is followed by a latency time where no pattern formation occurs [Fig. 1(b)]. This featureless phase ends with the appearance of convective rolls [Fig. 1(c)]. After a few thousands seconds, the rolls rearrange towards a more ordered quasisquared pattern [Fig. 1(d)], a configuration typical of solutal convection in binary mixtures with positive Soret coefficient heated from below [17–19].

Quite surprisingly, after a time of the order of 10^4 s, the square patterns start to drift and evolve gradually into sequences of columns of liquid moving in opposite directions along parallel lanes arranged in a superhighway configuration (SH) [Fig. 1(e)]. Eventually, the SH patterns might fade away and the convective pattern can become almost featureless [Fig. 1(f)]. At Rayleigh numbers of the

order of $Ra_{SH} \approx 1400$ ($\Delta T = 9$ K), the SH patterns become stable (movie S2 in Supplemental Material [26]). At larger Rayleigh numbers, the patterns display marked oscillations between a drifting square (DS) pattern (movie S3 in Supplemental Material [26]) and an SH one. The long time behavior of the patterns is strongly affected by the marginal inclination angle and by the Rayleigh number (Fig. 2). The phase diagram displays a stable large scale flow (LSF) region at small Rayleigh numbers, where convective patterns are destroyed by the long-term effect of the inclination. At higher Rayleigh numbers, the columnar convection is more efficient than the LSF. Under these conditions, stable drifting square patterns are present. The intermediate region is characterized by patterns where the competition between LSF and solutal convection becomes apparent and the system displays marked oscillations between drifting square patterns and longitudinal rolls or SH patterns. In a narrow region of the phase space (stars in Fig. 2), the balance between LSF and solutal convection gives rise to a stable SH convection state in which the columns organize into parallel lanes drifting in opposite directions (Fig. 1(e) and movie S4 in Supplemental Material [26]). The white spots, which represent descending columns of colder liquid crossing the cell perpendicularly to the plane of the figure, align into parallel lines and move in the direction of the residual gravitational force g_r parallel to cell surface, while the dark spots align into another set of lines and move in the opposite direction. The two sets of lines are staggered across the cell plane.

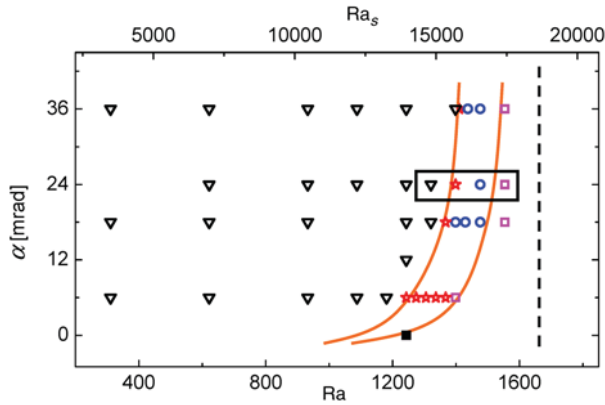


FIG. 2 (color online). Phase diagram of long-term convective behavior: phase diagram of the convective pattern as a function of the Rayleigh number (or solutal Rayleigh number, top axis) and the inclination angle. Symbols represent the different long-term convective states: (lower triangle) for large scale flow (LSF); (star) for superhighway (SH) convection; (circle) for oscillations; (open square) for drifting square patterns (DS); and (filled square) for stable still square patterns. The two curved lines mark the approximate boundaries of the transition region, the vertical one indicates the value of the critical Rayleigh number at zero inclination. The rectangle outlines the experimental conditions shown in Fig. 3.

The different size of the two sets of spots is related to the shadowgraph visualization because areas with a refractive index slightly larger (smaller) than the surroundings act like converging (diverging) lenses [28,29]. The development of lanes in the presence of two flows occurring in opposite directions is a rather general self-organization process that occurs also in other systems, such as groups of animals [30]. In particular, simulations of the dynamics of groups of pedestrians crossing a walkway in opposite directions show the development of lanes of flow similar to those reported by us, but obtained in the presence of more generic local interactions than the hydrodynamic ones governing our system [31].

In order to perform a systematic investigation of the evolution of the convective patterns, we determined from each image sequence the time evolution of the contrast $C(t)$ of the images. The image contrast is defined as $C(t) = \langle [i(t) - i(t_0)]^2 \rangle_{\bar{x}}$, where $\langle \dots \rangle_{\bar{x}}$ represents the average over the pixels of an image, $i(t) = I(t)/\langle I(t) \rangle_{\bar{x}}$ is an image normalized by its spatial average, and $i(t_0)$ is a normalized background image at time t_0 before applying the temperature gradient. The contrast provides a quantitative estimate of the strength of the temperature and concentration modulations generated by the convective motions. Under all the explored experimental conditions, after the imposition of the temperature difference, the contrast remains constant for a latency time t^* lasting from tens to hundreds of seconds (Fig. 3, left arrows). The latency period is then followed by a rapid growth of the contrast and by relaxation oscillations leading to a value that remains fairly stable for a second latency time t_{LSF} related to the inclination of the cell (Fig. 3, right arrows).

Interestingly, up to the time t_{LSF} , the evolution of the contrast under different experimental conditions is

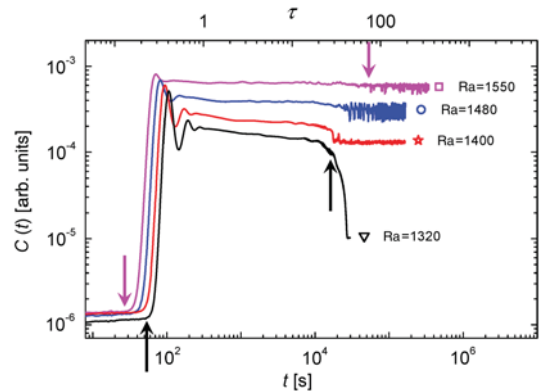


FIG. 3 (color online). Image contrast: contrast of shadowgraph image sequences $C(t)$ plotted as a function of time (or dimensionless time relative to the diffusive time scale, top axis). The layer of liquid is tilted at an angle of 24 mrad. The curves correspond to different imposed temperature differences. Continuous lines stand for Rayleigh numbers: (from top to bottom) $Ra = 1550, 1480, 1400, 1320$. The left vertical arrows indicate t^* while the right ones indicate τ_{LSF} , as detailed in the text.

qualitatively similar. After that time, patterns become strongly affected by the large scale flow that determines a dramatic differentiation of the contrast. For an inclination of 24 mrad at $Ra = 1320$, the drop of the contrast marks the appearance of almost featureless patterns associated to the LSF (Fig. 3). The fact that the contrast does not drop back to its original value is the signature of the presence of barely detectable fluctuations induced by the shear motion. At $Ra = 1400$, the balance between LSF and solutal convection gives rise to a SH convective regime (Fig. 3) with a stable contrast, accompanied by small number fluctuations determined by the entrance and exit of the columnar structures into the field of view. At $Ra = 1480$, the competition between LSF and solutal convection gives rise to the transition between different patterns and the contrast exhibits pronounced oscillations (Fig. 3). Finally, at $Ra = 1550$, solutal convection gives rise to square patterns, but the influence of the LSF still determines a drifting of the patterns that gives rise to small number fluctuations (Fig. 3).

The presence of relaxation oscillations is a signature that the onset of convection is determined by the destabilization of concentration boundary layers (BLs). Basically, the BLs grow uniformly by diffusion until they reach a critical thickness δ^* beyond which convection sets in. An estimate of the critical thickness of the boundary layers can be obtained from the critical dimensionless latency time $\tau^* = t^*D/h^2$ [32–35], where t^* is experimentally determined as the time at which the derivative of the image contrast increases by a fixed amount (left arrows in Fig. 3). Figures 4(a) and 4(b) show the dimensionless latency time τ^* and critical BL thickness δ^* , relative to h , plotted as a function of Ra . Interestingly, the data in Figs. 4(a) and 4(b) fall onto the same curve independently of the inclination angle. This confirms that the initial stages of pattern formation are not significantly influenced by a marginal inclination of the sample.

After a time t_{LSF} on the order of 10^4 s (Fig. 3), the patterns start to drift, thus, marking the start of the influence of the large scale shear flow induced by the inclination of the cell. Equivalently, the image contrast shows a drop (right arrows in Fig. 3), which is used to quantitatively identify t_{LSF} . The dimensionless time $\tau_{LSF} = t_{LSF}D/h^2$, which expresses t_{LSF} relative to the diffusion time across the cell height, is strongly affected by the inclination angle, as it is apparent from the lack of overlap of the curves corresponding to different inclination angles [Fig. 4(c)]. For large Rayleigh numbers close to the threshold Ra_c , the time τ_{LSF} shows signs of a divergence. At such large Ra , a slowing down of the shear flow occurs, indicating the dominance of the solutal columnar convective mass transfer over the shear flow.

In the present Letter, we limited our analysis to one liquid mixture with a positive Soret coefficient; it remains an open question whether a similar mechanism can be

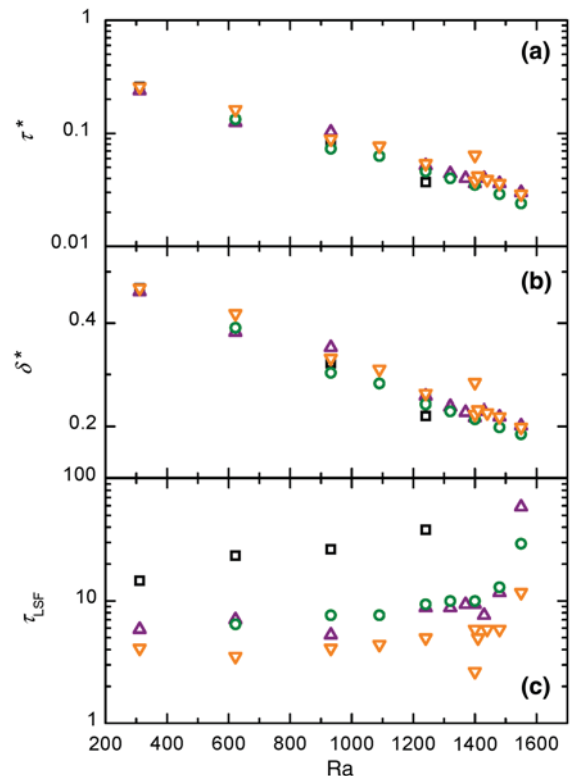


FIG. 4 (color online). Convection time scales and boundary layer thickness: (a) Dimensionless critical time τ^* for the onset of convection. (b) Critical thickness δ^* of the dimensionless concentration boundary layer. (c) Dimensionless time τ for the manifestation of the large scale shear flow (LSF) related to the inclination, τ_{LSF} . Different symbols stand for different inclination angles: (square) are for 6 mrad, (upper triangle) for 18 mrad, (circle) for 24 mrad, and (lower triangle) for 36 mrad.

generally observed in other systems where a temperature and composition stratification coexist. One interesting case is the thermohaline circulation in oceans [10,11]. Here, the cooling determined by wind at the surface of the ocean determines a decrease of the temperature and an increase of the salinity through evaporation, in the presence of a variable landscape at the bottom of the ocean. The combined effect of these factors is one of the components leading to the large scale thermohaline circulation, a phenomenon that is still not understood well, due to the simultaneous presence of other effects that contribute to the oceanic currents. Our experimental model system may allow us to isolate and study independently one of the fundamental mechanisms driving the thermohaline circulation process. In turn, this will facilitate progress towards a fundamental understanding of the interplay between large scale flow and local columnar flows.

We thank Henri Battaller for critical reading of the manuscript, Georges Brügger for experimental help, and Roberto Cerbino for early discussions. F.C. acknowledges financial support from the European Union under FP7

PEOPLE Marie Curie Intra European Fellowship, Contract No. IEF-251131, DyNeFI Project. This project has been financially supported by the Swiss National Science Foundation (Project No. 132736).

*Corresponding author.

fabrizio.croccolo@univ-pau.fr

- [1] M. C. Cross and P. C. Hohenberg, *Rev. Mod. Phys.* **65**, 851 (1993).
- [2] R. M. Clever and F. H. Busse, *J. Fluid Mech.* **81**, 107 (1977).
- [3] F. H. Busse and R. M. Clever, *J. Eng. Math.* **26**, 1 (1992).
- [4] F. H. Busse and R. M. Clever, *Phys. Fluids* **12**, 2137 (2000).
- [5] K. E. Daniels, B. B. Plapp, and E. Bodenschatz, *Phys. Rev. Lett.* **84**, 5320 (2000).
- [6] K. E. Daniels and E. Bodenschatz, *Phys. Rev. Lett.* **88**, 034501 (2002).
- [7] G. Seiden, S. Weiss, J. H. McCoy, W. Pesch, and E. Bodenschatz, *Phys. Rev. Lett.* **101**, 214503 (2008).
- [8] S. Weiss, G. Seiden, and E. Bodenschatz, *New J. Phys.* **14**, 053010 (2012).
- [9] A. Zebib and M. M. Bou-Ali, *Phys. Rev. E* **79**, 056305 (2009).
- [10] C. Wunsch, *Science* **298**, 1179 (2002).
- [11] S. Rahmstorf, *Nature (London)* **421**, 699 (2003).
- [12] T. E. Faber, *Fluid Dynamics for Physicists* (Cambridge University, Cambridge, England, 1995).
- [13] C. Soret, *Arch. Sci. Phys. Nat.* **II**, 48 (1879).
- [14] S. R. de Groot and P. Mazur, *Nonequilibrium Thermodynamics* (North-Holland, Amsterdam, 1962).
- [15] J. K. Platten and J. C. Legros, *Convection in Liquids* (Springer-Verlag, Berlin, 1984).
- [16] V. M. Shevtsova, D. E. Melnikov, and J. C. Legros, *Phys. Rev. E* **73**, 047302 (2006).
- [17] P. Le Gal, A. Pocheau, and V. Croquette, *Phys. Rev. Lett.* **54**, 2501 (1985).
- [18] E. Moses and V. Steinberg, *Phys. Rev. Lett.* **57**, 2018 (1986).
- [19] Ch. Jung, B. Huke, and M. Lücke, *Phys. Rev. Lett.* **81**, 3651 (1998).
- [20] S. Weggler, B. Huke, and M. Lücke, *Phys. Rev. E* **81**, 016309 (2010).
- [21] $D = 9.5 \times 10^{-10} \text{ m}^2 \text{ s}^{-1}$, $S_T = 3.9 \times 10^{-3} \text{ K}^{-1}$, $dn/dT = -4.5 \times 10^{-4} \text{ K}^{-1}$, $dn/dc = 6.3 \times 10^{-2}$, $\alpha = 9.9 \times 10^{-5} \text{ K}^{-1}$, $\beta = 0.13$, $\rho = 79.25 \times 10^{-2} \text{ g cm}^{-3}$, $\eta = 1.1 \times 10^{-2} \text{ P}$, $\psi = 0.13$, and $Le = 0.011$ from [22] and references therein.
- [22] J. K. Platten, M. M. Bou-Ali, P. Costesèque, J. F. Dutrieux, W. Köhler, C. Leppla, S. Wiegand, and G. Wittko, *Philos. Mag.* **83**, 1965 (2003).
- [23] A. Vailati, R. Cerbino, S. Mazzoni, C. J. Takacs, D. S. Cannell, and M. Giglio, *Nat. Commun.* **2**, 290 (2011).
- [24] M. Bernardin, F. Comitani, and A. Vailati, *Phys. Rev. E* **85**, 066321 (2012).
- [25] F. Croccolo, H. Bataller, and F. Scheffold, *J. Chem. Phys.* **137**, 234202 (2012).
- [26] See Supplemental Material at <http://link.aps.org/supplemental/10.1103/PhysRevLett.111.014502> for a description of the control measurement at zero tilt angle and for movies of the time evolution of the convective pattern under different experimental conditions.
- [27] G. S. Settles, *Schlieren and Shadowgraph Techniques* (Springer, Berlin, 2001).
- [28] S. Trainoff and D. S. Cannell, *Phys. Fluids* **14**, 1340 (2002).
- [29] F. Croccolo and D. Brogioli, *Appl. Opt.* **50**, 3419 (2011).
- [30] I. D. Couzin and J. Krause, *Adv. Study Behav.* **32**, 1 (2003).
- [31] D. Helbing and P. Molnar, *Phys. Rev. E* **51**, 4282 (1995).
- [32] The dimensionless critical thickness δ^* is the relative thickness of the solutal boundary layers as they become unstable. As their growth is diffusive, their critical value can be demonstrated to be: $\delta^* = (1/2) - (4/\pi^2) \sum_{n=0}^{\infty} [1/(2n+1)^2] \exp[-\pi^2(2n+1)^2 t^*]$.
- [33] L. N. Howard, in *Proceedings of the 11th International Congress of Applied Mechanics, Munich, 1964*, edited by H. Görtler (Springer, Berlin, 1966), pp. 1109–1115.
- [34] V. Degiorgio, *Phys. Rev. Lett.* **41**, 1293 (1978).
- [35] R. Cerbino, S. Mazzoni, A. Vailati, and M. Giglio, *Phys. Rev. Lett.* **94**, 064501 (2005).