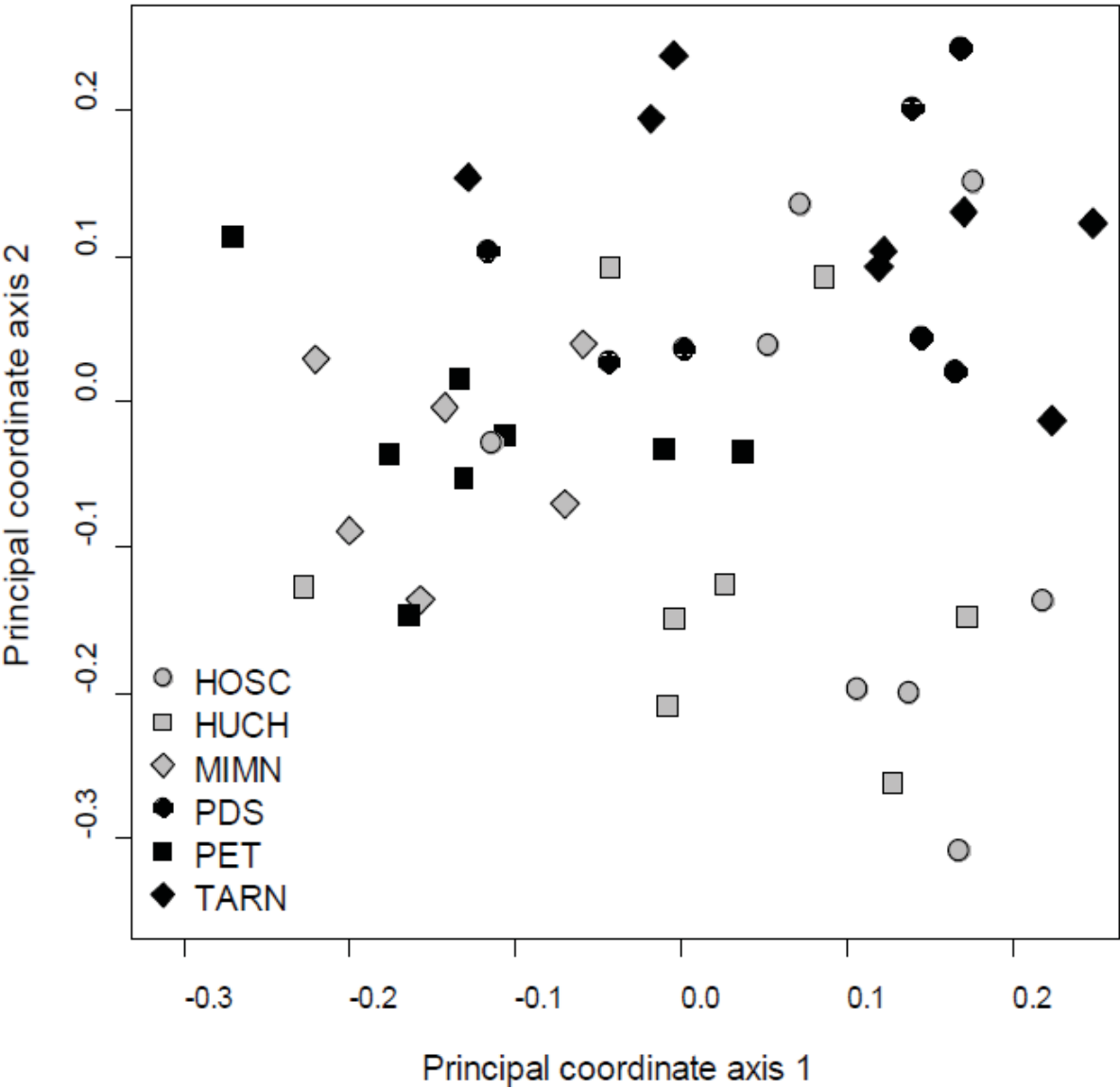


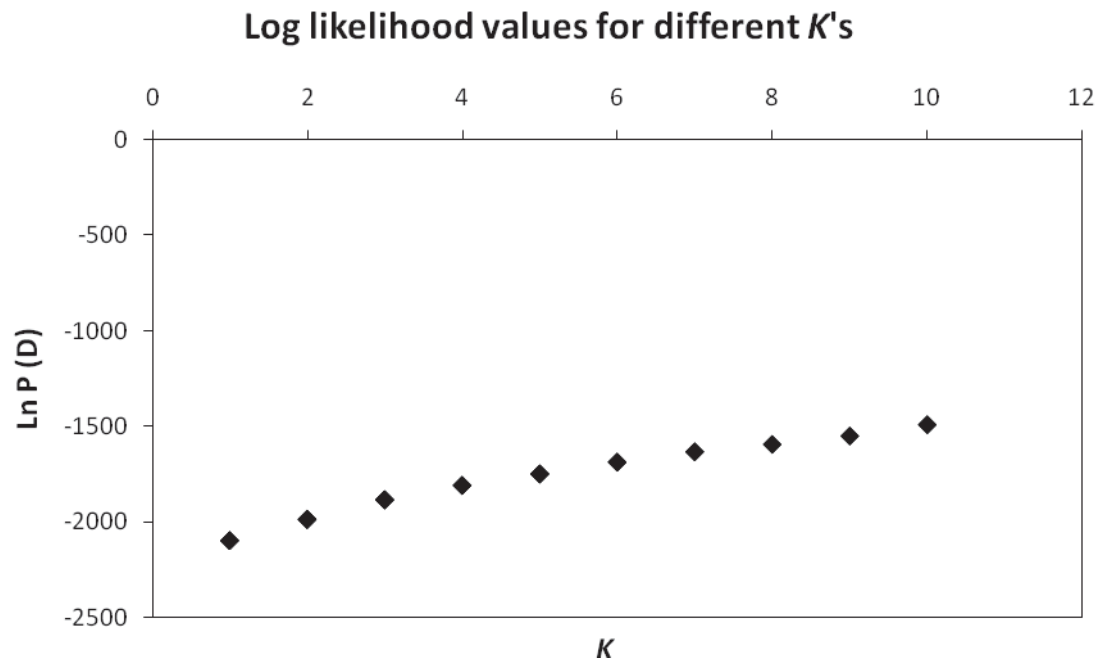
SUPPLEMENTARY MATERIAL

Supplementary Figure 1. Principal coordinate analysis of the AFLP data from 46 individuals from six sampling sites, based on Jaccard’s similarity distances. The first two principal coordinates axes are plotted.



8

9 **Supplementary Figure 2.** Log-likelihood probability of the number of inferred clusters (K) estimated
10 using STRUCTURE (Pritchard *et al.*, 2000).

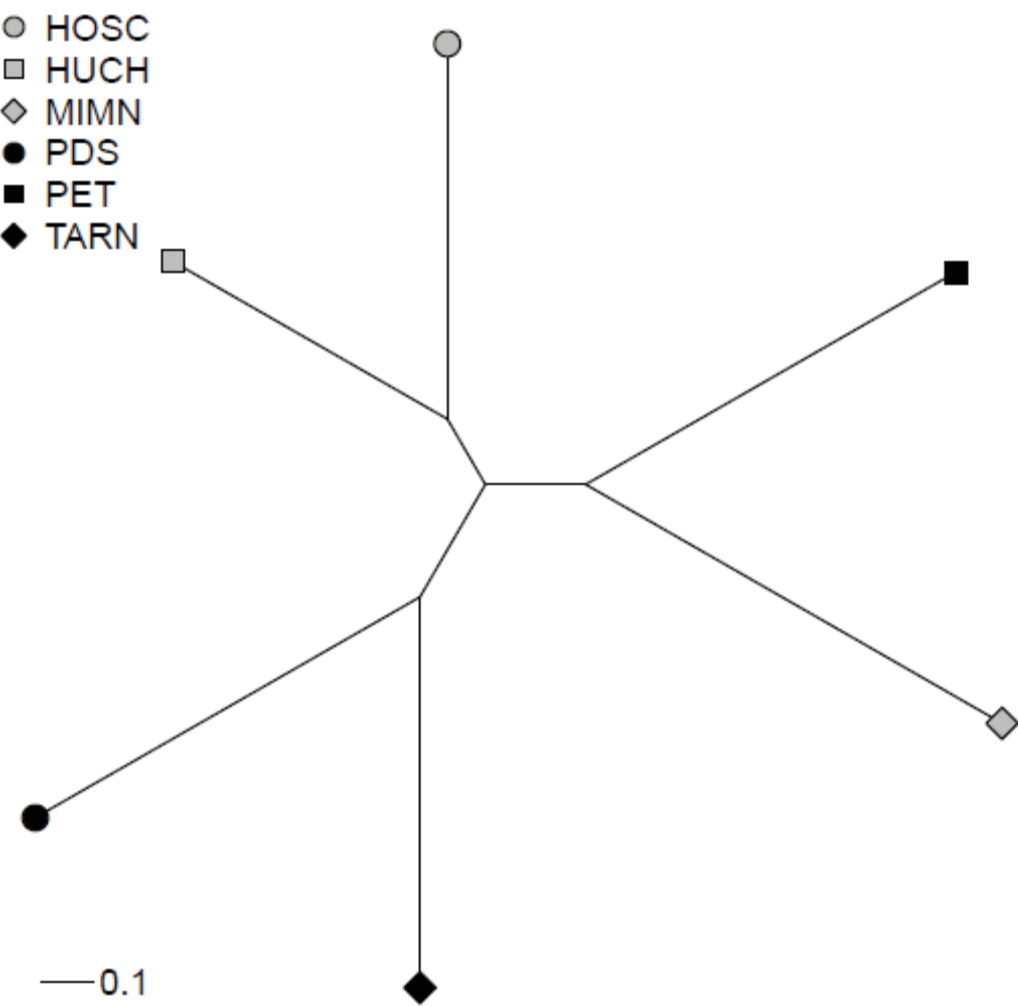


11

12

13

14 **Supplementary Figure 3.** Neighbor joining tree of the six sampling locations, based on Euclidean
15 distance of allele frequencies.



16

17

18

19

20 **Supplementary Table 1.** Univariate statistics of measured/scored quantitative characters of
 21 *Hieracium eriophorum*. Character's abbreviations and units are explained in Table 3. Min – minimum,
 22 5% – 5% percentile, SD – standard deviation, Max – Maximum, 95% – 95% percentile.

	Min(5%)	Mean+SD	Max(95%)
HP	20.00(40.00)	166.09+-190.08	930.00(614.00)
HFB	5.00(5.00)	94.81+-169.98	840.00(515.50)
DST	1.70(2.10)	3.75+-1.31	7.60(5.97)
LST	163.00(238.65)	490.05+-237.46	1131.00(1033.15)
LFB	10.00(148.05)	373.53+-204.17	996.00(875.85)
LIN	9.00(15.15)	116.52+-117.42	443.00(381.35)
NL	24.00(28.45)	62.16+-25.95	158.00(110.85)
LLL	25.00(30.15)	48.20+-13.30	87.00(71.55)
WLL	9.00(11.15)	17.73+-4.40	30.00(25.00)
LLL/WLL	1.88(2.06)	2.74+-0.48	4.24(3.48)
NT	1.00(3.00)	4.92+-1.95	13.00(7.85)
LLT	0.30(0.53)	1.83+-0.96	4.50(3.39)
NC	3.00(6.15)	24.72+-20.94	106.00(63.10)
NC/LIN	0.07(0.10)	0.29+-0.16	1.00(0.54)
LLB	10.00(21.15)	72.19+-45.28	243.00(157.90)
LA	3.00(4.15)	12.22+-6.52	32.00(24.00)
LLB	9.00(9.00)	10.45+-0.94	13.00(12.00)
LTB	0.00(0.00)	0.63+-0.53	2.70(1.67)
LTA	0.00(0.22)	1.03+-0.67	2.60(2.39)
LTUT	0.10(0.20)	1.22+-0.90	3.60(2.86)
LTMT	0.20(0.42)	2.15+-1.16	5.20(4.44)
LTSB	0.50(0.63)	2.33+-1.17	5.40(4.26)
LTLUT	0.00(0.20)	0.82+-0.58	2.60(1.79)
LTLMT	0.10(0.32)	1.24+-0.61	2.70(2.39)
LTLT	0.10(0.70)	1.19+-0.44	2.30(2.00)
TDL1	1.00(2.00)	3.73+-1.25	5.00(5.00)
TDL2	2.00(3.00)	4.14+-0.73	5.00(5.00)
TDL3	2.00(3.00)	4.23+-0.75	5.00(5.00)
LS	2.00(2.82)	3.71+-0.52	4.90(4.49)
LP	5.60(6.00)	7.02+-0.60	8.10(7.99)

23

Supplementary Table 2. Eigenvector values showing correlations of characters measured on *Hieracium eriophorum* with the first two principal components for the PCA based on all traits (PCA A), and the PCA based on the reduced set of traits (PCA B).

Character	PCA A		PCA B	
	Axis 1	Axis 2	Axis 1	Axis 2
HP	-0.507	0.460	-0.474	0.847
HFB	-0.401	0.547	-0.407	0.873
DST	-0.575	-0.685	-	-
LST	-0.733	-0.012	-0.559	0.545
LFB	-0.504	0.364	-	-
LIN	-0.606	-0.657	-	-
NL	-0.661	-0.401	-	-
LLL	-0.709	0.170	-	-
WLL	-0.766	-0.109	-	-
LLL/WLL	-0.044	0.369	-	-
NT	-0.028	-0.443	-	-
LLT	-0.370	-0.286	-	-
NC	-0.526	-0.663	-	-
NC/LIN	0.387	0.172	-	-
LLB	-0.547	-0.381	-	-
LA	-0.014	-0.162	-	-
LLBR	-0.257	-0.115	-	-
LTB	-0.591	0.146	-0.659	-0.223
LTA	-0.719	0.168	-0.773	-0.076
LTUT	-0.719	0.010	-0.772	-0.229
LTMT	-0.620	0.079	-0.711	-0.284
LTSB	-0.391	-0.038	-0.406	-0.442
LTLUT	-0.646	0.462	-0.827	-0.041
LTLMT	-0.557	0.471	-0.736	-0.069
LTLT	-0.207	0.343	-0.316	-0.077
TDL1	-0.777	0.209	-0.856	-0.051
TDL2	-0.603	0.142	-0.670	-0.170
TDL3	0.005	0.213	-0.148	-0.202
LS	0.105	-0.531	-	-
LP	-0.310	0.076	-	-
SC	0.239	0.230	-	-

Supplementary Table 3. List of herbarium records

Acronym*	Herbarium / Institution	Total specimens
Records personally checked		
ANG	Arboretum de la Maulévrier, Angers, F	4
AV	Muséum Requier, Avignon, F	2
G, G-DC	Conservatoire et Jardin botaniques de la Ville de Genève, CH	42
LY	Université Claude Bernard, Lyon, F	42
MPU	Université Montpellier 2, F	67
P	Muséum National d'Histoire Naturelle, Paris, F	125
Records electronically provided		
AIX	Muséum d'Histoire Naturelle d'Aix-en-Provence, F	2
AUT	Muséum d'Histoire Naturelle, Autun, F	8
GRM-ARV	Muséum d'Histoire Naturelle de Grenoble, F	15
LISU	Museu Nacional de História Natural, Lisboa, P	4
LMS	Muséum d'Histoire Naturelle, Le Mans, F	1
TL	Université Paul Sabatier, Toulouse, F	1

*according to Thiers B (2011) Index Herbariorum: A global directory of public herbaria and associated staff. New York Botanical Garden's Virtual Herbarium. <http://sweetgum.nybg.org/ih/> Accessed 27 March 2011

36 **Supplementary Table 4.** Absence and presence records used for maps

	herbaria	literature	ONF monitoring	own fieldwork
1800 to 1850	34	0	0	0
1851 to 1945	60	0	0	0
1946 to 1984	6	32	0	0
1985 to 2000	3	1	51	0
2001 to 2010	0	0	52	45
total	103	33	103	45

37